

WW-7  
8-30-06



West Virginia Department of Environmental Protection  
Office of Oil and Gas  
**WELL LOCATION FORM: GPS**

API: 4705500274 WELL NO.: 14017  
 FARM NAME: Pocahontas Land Corp  
 RESPONSIBLE PARTY NAME: Cornerstone Mining, LLC  
 COUNTY: Mercer DISTRICT: Rock  
 QUADRANGLE: Crumpler Quad  
 SURFACE OWNER: Pocahontas Land Corp  
 ROYALTY OWNER: Pardee Minerals  
 UTM GPS NORTHING: 4138415.245  
 UTM GPS EASTING: 473115.359 GPS ELEVATION: ±2600

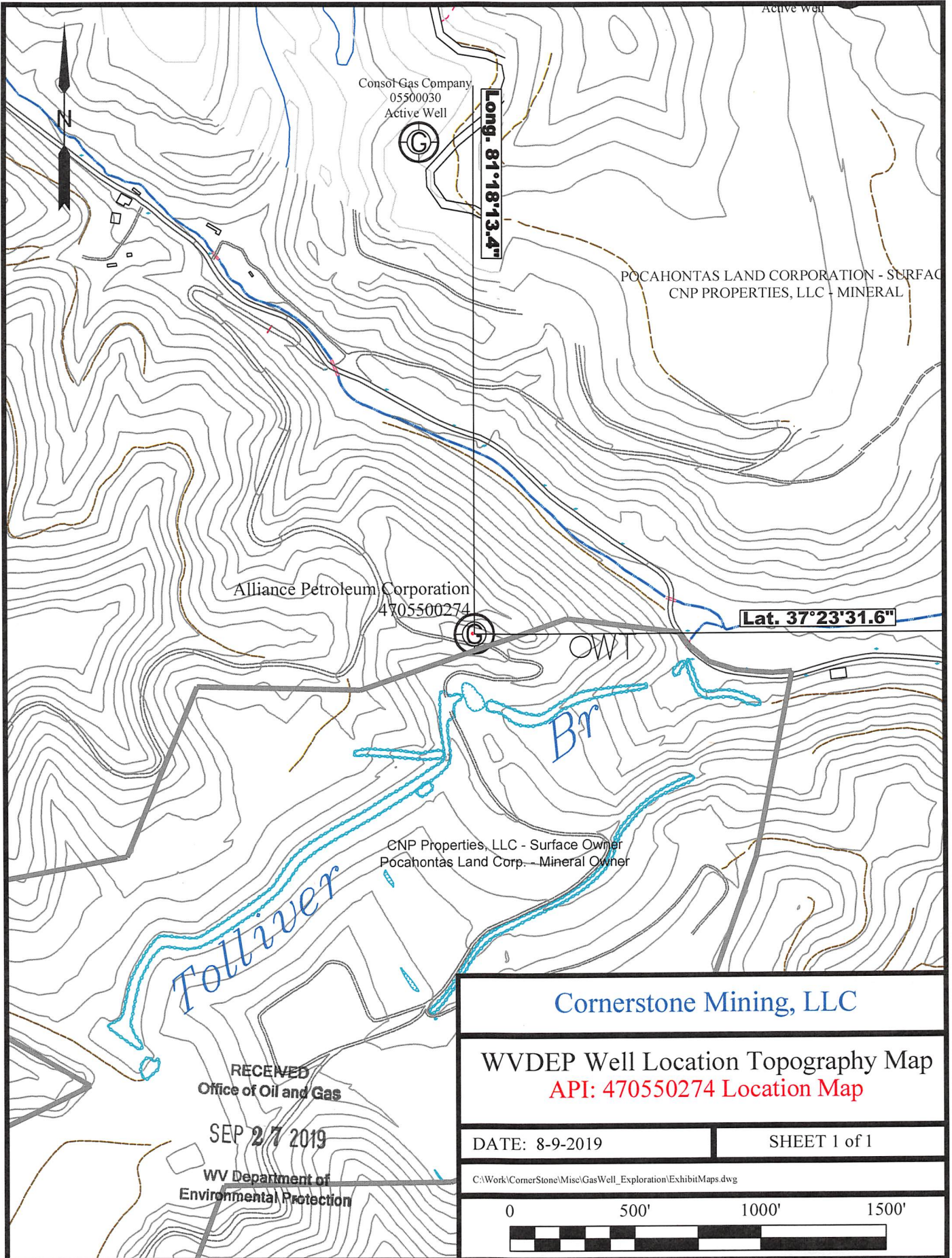
The Responsible Party named above has chosen to submit GPS coordinates in lieu of preparing a new well location plat for a plugging permit or assigned API number on the above well. The Office of Oil and Gas will not accept GPS coordinates that do not meet the following requirements:

1. Datum: NAD 1983, Zone: 17 North, Coordinate Units: meters, Altitude: height above mean sea level (MSL) – meters.
2. Accuracy to Datum – 3.05 meters
3. Data Collection Method:  
 Survey grade GPS NA : Post Processed Differential NA  
 Real-Time Differential NA  
 Mapping Grade GPS X : Post Processed Differential NA  
 Real-Time Differential ±17'

**RECEIVED**  
**Office of Oil and Gas**  
**SEP 27 2019**  
**WV Department of**  
**Environmental Protection**

4. **Letter size copy of the topography map showing the well location.**  
 I the undersigned, hereby certify this data is correct to the best of my knowledge and belief and shows all the information required by law and the regulations issued and prescribed by the Office of Oil and Gas.

     Land Agent      08/26/2019  
 Signature      Title      Date



RECEIVED  
Office of Oil and Gas

SEP 27 2019

WV Department of  
Environmental Protection

### Cornerstone Mining, LLC

WVDEP Well Location Topography Map  
API: 470550274 Location Map

DATE: 8-9-2019

SHEET 1 of 1

C:\Work\CornerStone\Misc\GasWell\_Exploration\ExhibitMaps.dwg

0 500' 1000' 1500'



*[Handwritten signature]*