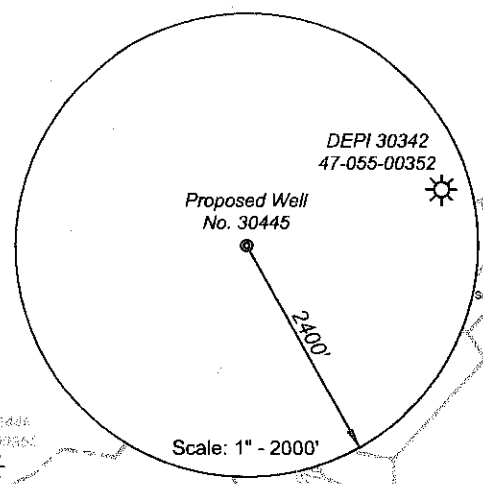


Dominion Well No. 30445
 Dominion Exploration and Production Co.
 103,420 Acre Lease

LATITUDE 37 - 27 - 30
 LONGITUDE 81 - 15 - 00
 3760'
 7500'

Notes:
 Well site coordinates are
 N: 159,477 Latitude: 37-26-15.6
 E: 1,923,647 Longitude: 81-15-46.7
 West Virginia
 Coordinate System of 1927, South Zone
 based upon
 Differential GPS Measurements.
 Plat orientation and corner and well
 references are based upon the grid north
 meridian.
 Well location references are based upon the
 magnetic meridian.



GRID NORTH

24" Maple stump with references

- Legend**
- ⊙ Proposed gas well
 - Found corner, as noted
 - - - Surface boundary (approximate)
 - - - Interior surface tracts (approx.)
 - (⊙) Denotes location of well on United States topographic maps

Proposed Well No. 30445

Pocahontas Land Corporation
 242/227
 630.30 Acres

Shrewsbury Machine Gasting
 665/728
 18 Acres

Set Stone

DEPI 30342
 47-055-00352

DEPI 30344
 47-055-00352

DEPI 30348
 47-055-00351

DEPI 30349
 47-055-00351

DEPI 30350
 47-055-00351

DEPI 30351
 47-055-00351

DEPI 30352
 47-055-00351

DEPI 30353
 47-055-00351

DEPI 30354
 47-055-00351

DEPI 30355
 47-055-00351

DEPI 30356
 47-055-00351

DEPI 30357
 47-055-00351

DEPI 30358
 47-055-00351

DEPI 30359
 47-055-00351

DEPI 30360
 47-055-00351

DEPI 30361
 47-055-00351

DEPI 30362
 47-055-00351

DEPI 30363
 47-055-00351

DEPI 30364
 47-055-00351

DEPI 30365
 47-055-00351

DEPI 30366
 47-055-00351

DEPI 30367
 47-055-00351

DEPI 30368
 47-055-00351

DEPI 30369
 47-055-00351

DEPI 30370
 47-055-00351

DEPI 30371
 47-055-00351

DEPI 30372
 47-055-00351

DEPI 30373
 47-055-00351

DEPI 30374
 47-055-00351

DEPI 30375
 47-055-00351

DEPI 30376
 47-055-00351

DEPI 30377
 47-055-00351

DEPI 30378
 47-055-00351

DEPI 30379
 47-055-00351

DEPI 30380
 47-055-00351

DEPI 30381
 47-055-00351

DEPI 30382
 47-055-00351

DEPI 30383
 47-055-00351

DEPI 30384
 47-055-00351

DEPI 30385
 47-055-00351

DEPI 30386
 47-055-00351

DEPI 30387
 47-055-00351

DEPI 30388
 47-055-00351

DEPI 30389
 47-055-00351

DEPI 30390
 47-055-00351

DEPI 30391
 47-055-00351

DEPI 30392
 47-055-00351

DEPI 30393
 47-055-00351

DEPI 30394
 47-055-00351

DEPI 30395
 47-055-00351

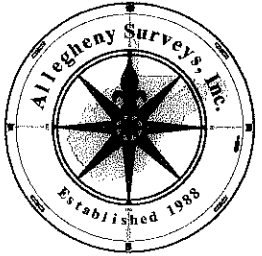
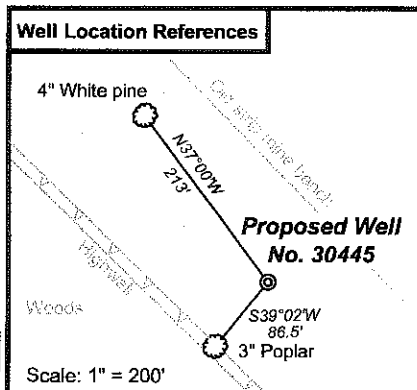
DEPI 30396
 47-055-00351

DEPI 30397
 47-055-00351

DEPI 30398
 47-055-00351

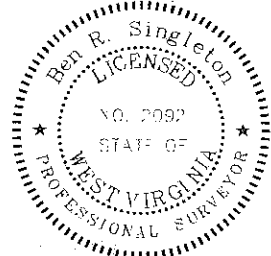
DEPI 30399
 47-055-00351

DEPI 30400
 47-055-00351



I, the undersigned, hereby certify that this plat is correct to the best of my knowledge and belief and shows all the information required by law and the regulations issued and prescribed by the Department of Environmental Protection.

Ben R. Singleton
 P.S. 2092



FILE NO: **W158-04**
 DRAWING NO: **W158-04_30445.dwg**
 SCALE: **1" = 1000'**
 MINIMUM DEGREE OF ACCURACY:
1:2500
 PROVEN SOURCE OF ELEVATION:
NGS HARN DEP Base Station Kanawha City

STATE OF WEST VIRGINIA
 DEPARTMENT OF ENVIRONMENTAL PROTECTION
OFFICE OF OIL AND GAS

DATE: **January 6** 20**09**
 OPERATOR'S WELL NO. **DOM #30445**
 API WELL NO:
47 - 055 - 003917
 STATE COUNTY PERMIT

WELL TYPE: OIL GAS LIQUID INJECTION WASTE DISPOSAL
 (IF GAS) PRODUCTION: STORAGE DEEP SHALLOW
 LOCATION: ELEVATION: **2,585'** WATERSHED **Big Branch of Righthand Fork**
 QUADRANGLE: **Crumpler** DISTRICT: **Rock** COUNTY: **Mercer**
 SURFACE OWNER: **Pocahontas Land Corp.** ACREAGE: **630.30**
 OIL AND GAS ROYALTY OWNER: **Penn Virginia Oil and Gas Co.** LEASE NO: _____ ACREAGE: **103,420**
 PROPOSED WORK: DRILL CONVERT DRILL DEEPER FRACTURE OR STIMULATE PLUG OFF OLD FORMATION
 PERFORATE NEW FORMATION OTHER PHYSICAL CHANGE IN WELL (SPECIFY) _____
 PLUG AND ABANDON CLEAN OUT AND REPLUG TARGET FORMATION: **BEREA SAND** ESTIMATED DEPTH: **5200'**

CANCELLED

WELL OPERATOR: **Dominion Exploration and Production Inc.** DESIGNATED AGENT: **VP/Operations - Rodney Biggs**
 ADDRESS: **One Dominion Drive, P.O. Box 1248** ADDRESS: **One Dominion Drive, P.O. Box 1248**
Jane Lew, WV 26378 **Jane Lew, WV 26378**

6/2/2012