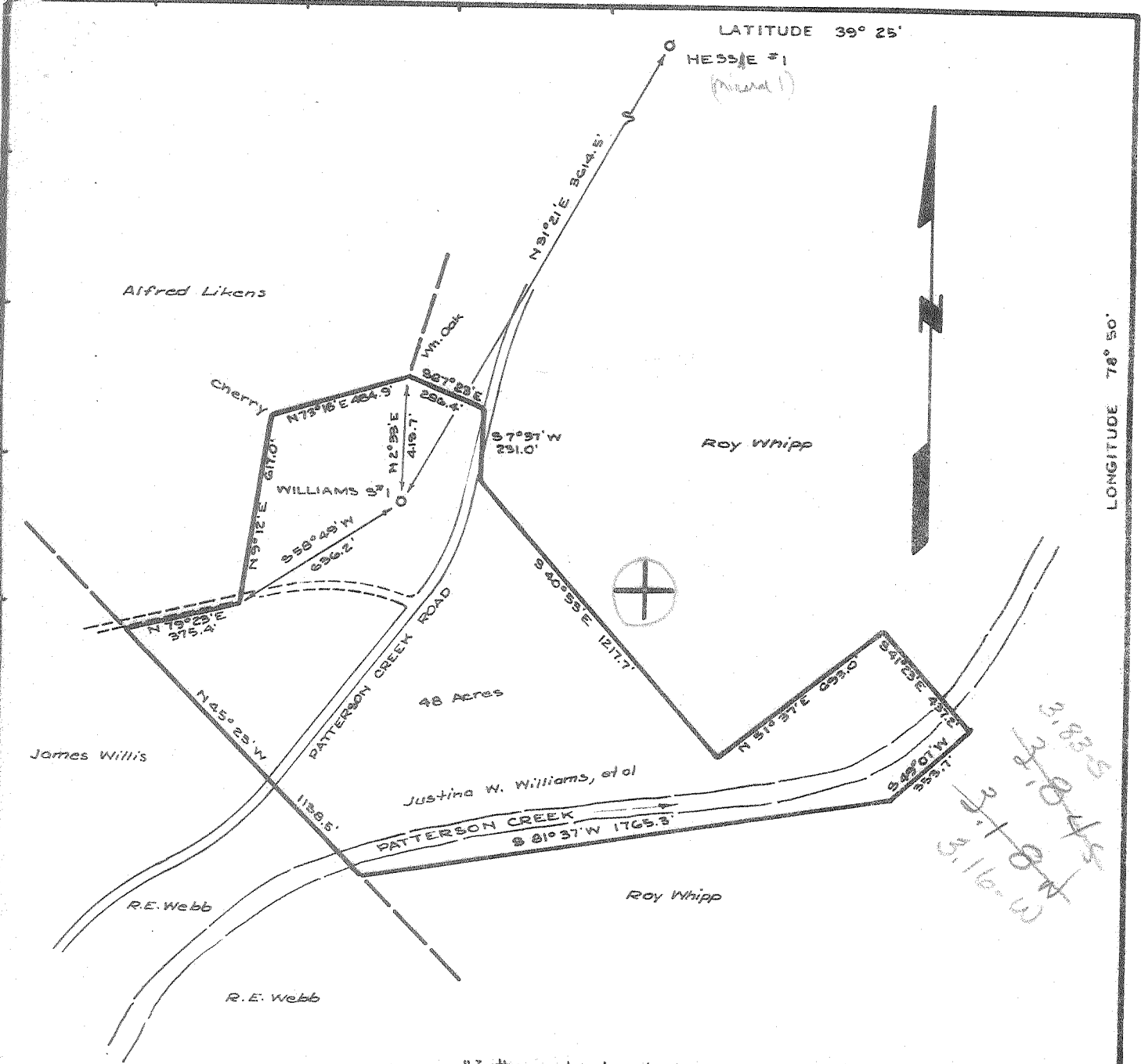


10/1/68



"I the undersigned, hereby certify that this map is correct to the best of my knowledge and belief and shows all of the information required by Paragraph 5 of the rules and regulations of the Oil and Gas Section of the mining laws of West Virginia."

- NEW LOCATION.....
- DRILL DEEPER.....
- ABANDONMENT.....

Edward C. Caswell
 EDWARD C. CASWELL
 Texas Reg. No. 5998

3,165
 3,160
 3,155
 3,150
 3,145
 3,140
 3,135
 3,130
 3,125
 3,120
 3,115
 3,110
 3,105
 3,100
 3,095
 3,090
 3,085
 3,080
 3,075
 3,070
 3,065
 3,060
 3,055
 3,050
 3,045
 3,040
 3,035
 3,030
 3,025
 3,020
 3,015
 3,010
 3,005
 3,000

COMPANY PHILLIPS PETROLEUM COMPANY
 ADDRESS BARTLESVILLE, OKLAHOMA
 FARM JUSTINA W. WILLIAMS, ET AL
 TRACT _____ ACRES 48 LEASE NO. 126443
 WELL (FARM) NO. S-1 SERIAL NO. _____
 ELEVATION (SPIRIT LEVEL) 746.9'
 QUADRANGLE KEYSER
 COUNTY MINERAL DISTRICT CABIN RUN
 ENGINEER Edward C. Caswell
 ENGINEER'S REGISTRATION NO. TEXAS - 5998
 FILE NO. _____ DRAWING NO. _____
 DATE SEPT. 26, 1968 SCALE 1" = 500'

STATE OF WEST VIRGINIA
 DEPARTMENT OF MINES

OIL AND GAS DIVISION
 CHARLESTON

WELL LOCATION MAP
 FILE NO. Min - 4

+ DENOTES LOCATION OF WELL ON UNITED STATES TOPOGRAPHIC MAPS, SCALE 1 TO 62,500. LATITUDE AND LONGITUDE LINES BEING REPRESENTED BY BORDER LINES AS SHOWN

- DENOTES ONE INCH SPACES ON BORDER LINE OF ORIGINAL TRACING.

Deep Well (H1d6q) 5-5 Headsville (302) OCT 28 1968

Orig - State
 Form OG-10 1 - B'ville
 1 - Oklahoma City
 1 - File



STATE OF WEST VIRGINIA
 DEPARTMENT OF MINES
 OIL AND GAS DIVISION 6

Rotary
 Spudder
 Cable Tools
 Storage

Quadrangle Keyser

Permit No. Mineral 4

WELL RECORD

Oil or Gas Well Gas
 (KIND)

Company Phillips Petroleum Company
 Address Bartlesville, Oklahoma
 Farm Williams "S" Acres 48
 Location (waters) 16,725' W of Long 78°50'; 20,500' S
of Lat 39°25' Elev. 746.9'
 Well No. 1
 District Cabin Run County Mineral
 The surface of tract is owned in fee by Justina W. Williams,
etal Burlington, W.Va.
 Address Burlington, W.Va.
 Mineral rights are owned by Justina W. Williams, etal
 Address Burlington, W.Va.

Casing and Tubing	Used in Drilling	Left in Well	Packers
Size			Kind of Packer
16			
13-3/8" OD 4.8#	31'	31' (OA)	(50sx by Hallib)
10			Size of
8-5/8" OD 2.4#	397.69'	381.14 IT	(175 sx by Hallib)
6%			Depth set
5 3/16			
4 1/2" OD 9.5#	1553'	1538' IT	
3			Perf. top <u>1125</u>
2			Perf. bottom <u>1421</u>
Liners Used			Perf. top
			Perf. bottom

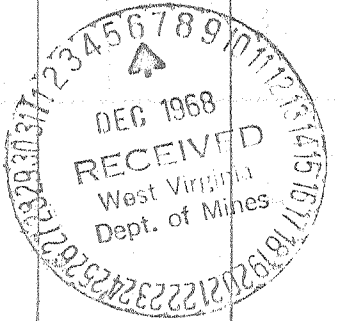
Drilling commenced 10-23-68
 Drilling completed 11-30-68
 Date Shot None From To
 With
 Open Flow /10ths Water in Inch
 /10ths Merc. in Inch
 Volume See reverse side Cu. Ft.
 Rock Pressure lbs. hrs.
 Oil bbls., 1st 24 hrs.
 WELL ACIDIZED (DETAILS) See reverse side
 WELL FRACTURED (DETAILS) See reverse side

Attach copy of cementing record.
 CASING CEMENTED 4 1/2" 1538' (Less thds) 10-31-68
 SIZE No. Ft. Date
 Amount of cement used (bags) Cmtd w/160 sx
 Name of Service Co.
 COAL WAS ENCOUNTERED AT FEET INCHES
 FEET INCHES FEET INCHES
 FEET INCHES FEET INCHES

RESULT AFTER TREATMENT (Initial open Flow or bbls.) See reverse side
 ROCK PRESSURE AFTER TREATMENT HOURS
 Fresh Water 83' 515-519' 636' (Squeezed 515-519' w/23 bbls Hallib PWG) Feet
 Salt Water Feet
 Producing Sand Oriskany & Helderberg Depth

211,000 - 211 McF

Formation	Color	Hard or Soft	Top	Bottom	Oil, Gas or Water	Depth	Remarks
DRILLER'S LOG:							FORMATION TOPS - GR Log
Dirt & Rock			0	38		Oriskany	- 1120'
Lime (Hole wet at 83')			38	182		Helderberg	- 1290'
Shale & Lime			182	406		Bass Island	- 1467'
Shale (Hole wet at 515-519' & 636')			406	641	(Hallib squeezed w/23 bbls squeeze mat'l)		
Shale & Lime			641	833			
Shale			833	1060			
Shale & Sand			1060	1215			
Sand			1215	1315			
Sand & Lime (Show of gas @ 1430')			1315	1550			
				FEET 1517			



DEC 16 1968

Formation	Color	Hard or Soft	Top	Bottom	Oil, Gas or Water	Depth Found	Remarks
NOVEMBER 1968							
3							Hallib fracd Oriskany & Helderberg down 4 1/2" csg 1125-1421' w/30,000# 20-40 frac sand, and total fluid of 32,010 gals 3% gelled acid; 1000 gals F.E. acid, 60# FR-16, 600# WG-6, 300# CW-1, 5 gals Howco suds. MP 4000#, Min 2350#, break-down press 1650# to 1500#. Instant SI 1550#, 5 min 1050#; used 3 perf balls with 254 1/2 BF in, on perf w/278.5 bbls; press 3200 to 3400#. 3 balls w/516.5 BF in, on perf w/540 BF in; press 3250 to 3700#. Pmpg rate 36.4 BPM. HP available 3150, used 3024 HP. Started flowing back @ 2:35 PM. Set 2-3/8" OD tbg at 1462.40', collar 11' below RKB. Flowed back steady for 2 hrs, then by heads.
4							Blew w/air compressors 20 hrs. Shut off compressors 4:00 AM; tested w/pitot tube, gas 180 MCFPD. Heavy mist.
5							Testing. Blew hole w/compressors, once each 2 hrs, for 30 mins. Recovered 2 BF per blow. SI 4:00 AM for 3 hrs. SITP 130#. Blew well down, tested 200 MCFPD w/pitot tube.
6							Testing. Blew 30 mins each 2 hrs w/rig air compressors. Recovered 1 1/2 BW each blow. SI 4:00 AM for 3 hrs. SITP 120#. Gas 200 MCFPD, pitot tube test. Will release rotary & move in swab unit.
7							SI 9:15 AM, 11-6-68. SICP 225#.
8 - 11							SI. SICP 390# SITP 60#.
12 - 27							SI. Blew well approx 2 mins daily to clean up. SICP 425# SITP 400#.
28							SI. Took 1 Point test 1/4" - 4 hrs.
29 - 12-2							SI. Calculating test.
12-3-68							SI. Well head one point AOPF test - 243 MCFD. Flow rate 211 MCFD. Well remains SI - no market. Final Report.

Date December 4, 1968

APPROVED Phillips Petroleum Company, Owner

By A.T. Stafe
District Superintendent