

**NOTE "A"** Set stone in the North Boundary Line of the District Road leading from Fauntleroy to Headsville, near Sta. 210107 of said road and located as follows:  
 542°30'E - 94.6' from the South corner of a concrete block bldg on this lot.  
 46.5' Eastward from the center of the Northend of a culvert.  
 512°30'W - 10.4' from a pointer marked "M.O.". At a pt. 41' on the 3rd line of a tract of which this is a part.

Note: Well ties are 1971 Mag. Deed description is not adequate to show farm lines of Raymond V. Bosley.

7.5' loc  
 6.685 39°25'  
 1.09 W 78°52'30"  
 calc 15' loc  
 1.685 332W

COAL OWNED BY NO COAL

- NEW LOCATION
- RECONDITION
- DRILL DEEPER
- ABANDONMENT

"I, the undersigned, hereby certify that this map is correct to the best of my knowledge and belief and shows all the information required by paragraph 6 of the rules and regulations of the oil and gas section of the mining laws of West Virginia."  
 Minimum degree of accuracy is one part in 500

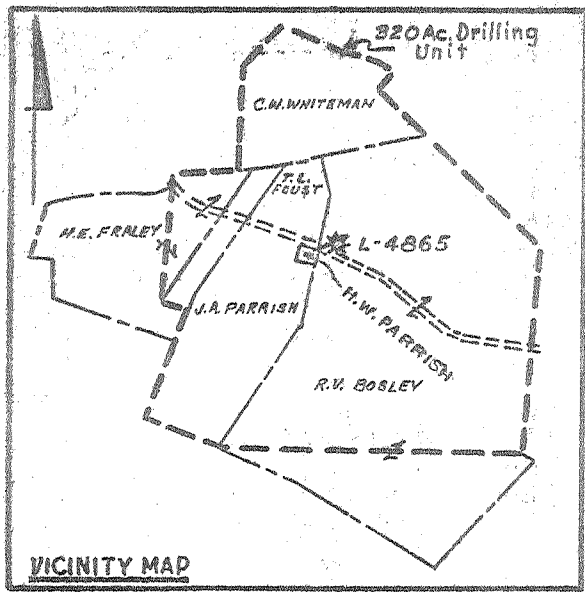
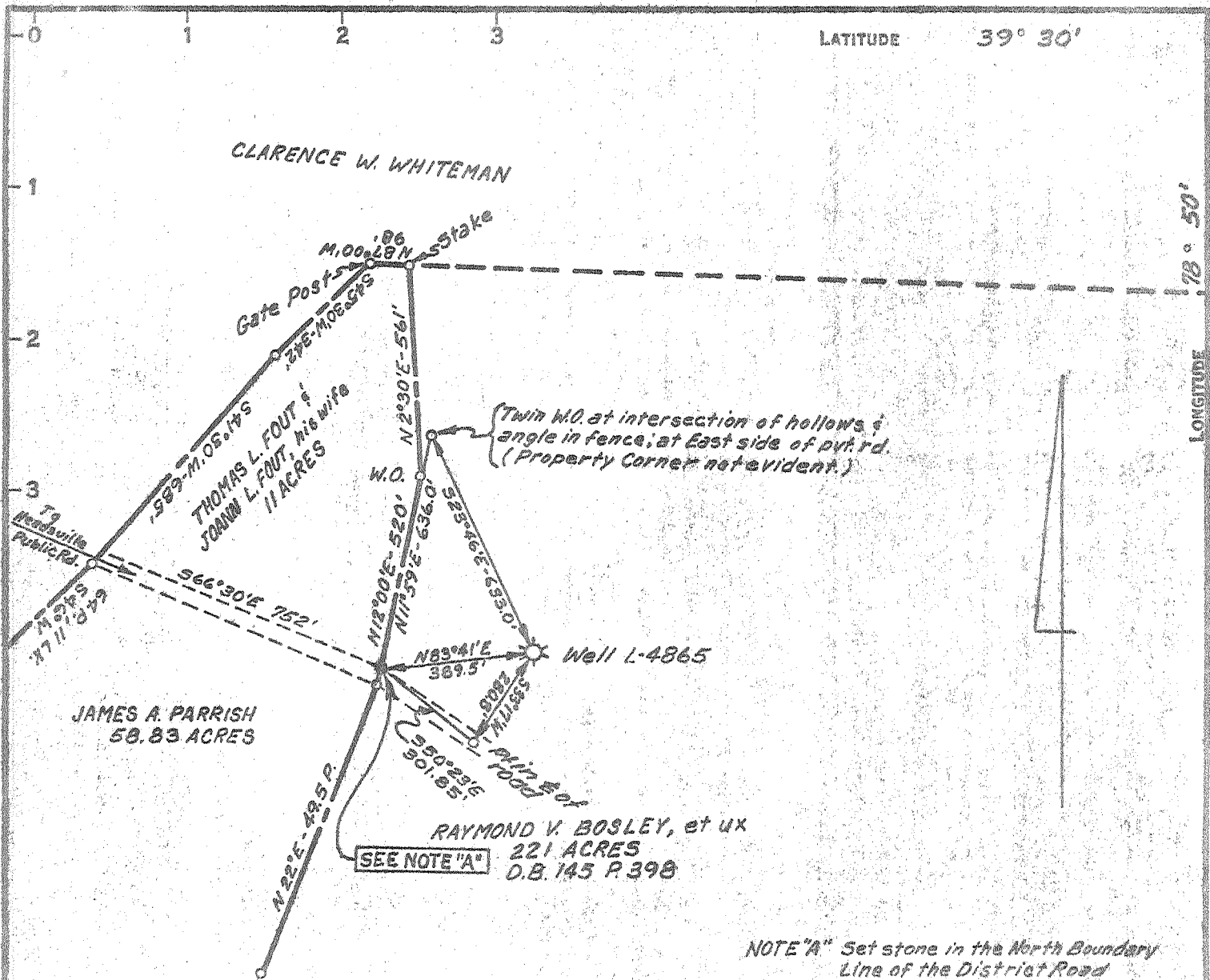
Signed John D. Cole 16255-E (PA.)

COMPANY THE MANUFACTURERS LIGHT & HEAT CO.  
 ADDRESS 800 UNION TRUST BLDG, PITTSBURGH, PA.  
 FARM RAYMOND V. BOSLEY, et ux  
 MAP Q-32-13 ACRES 22.1 of 320 Unit LEASE NO. 34079  
 WELL (FARM) NO. 1 SERIAL NO. L-4865  
 ELEVATION (SPIRIT LEVEL) 918  
 QUADRANGLE KEYSER  
 COUNTY MINERAL DISTRICT CABIN RUN  
 POINT OF PROVEN ELEVATION U.S.G.S. B.M. AT BRIDGE AT HEADSVILLE-685

FILE NO. \_\_\_\_\_ DRAWING NO. Y-28-793  
 DATE JAN. 21, 1971 SCALE 1" = 400'

STATE OF WEST VIRGINIA  
 DEPARTMENT OF MINES  
 OIL AND GAS DIVISION  
 CHARLESTON  
**WELL LOCATION MAP**  
 FILE NO. Min-7-P

+ DENOTES LOCATION OF WELL ON UNITED STATES TOPOGRAPHIC MAPS. SCALE 1 TO 62,500. LATITUDE AND LONGITUDE LINES BEING REPRESENTED BY BORDER LINES AS SHOWN.  
 - DENOTES ONE INCH SPACES ON BORDER LINE OF ORIGINAL TRACING.



NOTE "A" Set stone in the North Boundary Line of the District Road leading from Fountain to Headsville, near Sta. 210+07 of said road and located as follows:  
 542°30'E - 94.6' from the South corner of a concrete block bldg. on this lot.  
 46.5' Eastward from the center of the North end of a culvert.  
 312°30'W - 10.4' from a painter marked "W.O.". At a pt. 41' on the 3rd. line of a tract of which this is a part.

Note: Well ties are 1971 Mag. Deed description is not adequate to show farm lines of Raymond V. Bosley.

COAL OWNED BY NO COAL

- NEW LOCATION
- RECONDITION
- DRILL DEEPER
- ABANDONMENT

"I, the undersigned, hereby certify that this map is correct to the best of my knowledge and belief and shows all the information required by paragraph 6 of the rules and regulations of the oil and gas section of the mining laws of West Virginia."  
 Minimum degree of accuracy is one part in 300

*James A. Parrish*  
 3/27/71

Signed *James A. Parrish* 16256-E (P)

F.B. 1167 Pg. 24

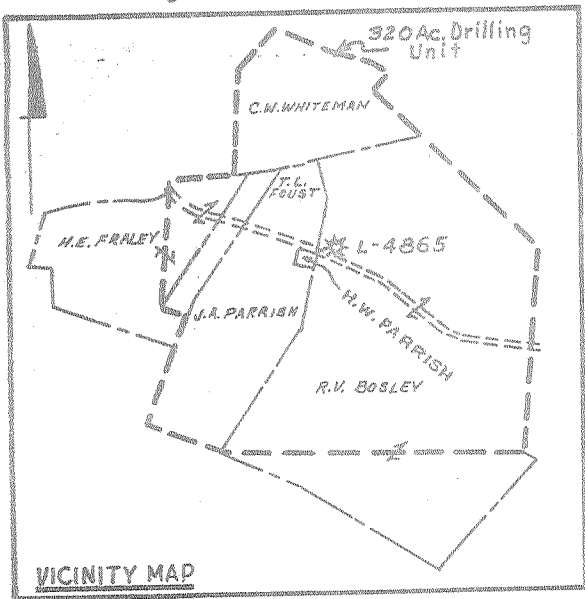
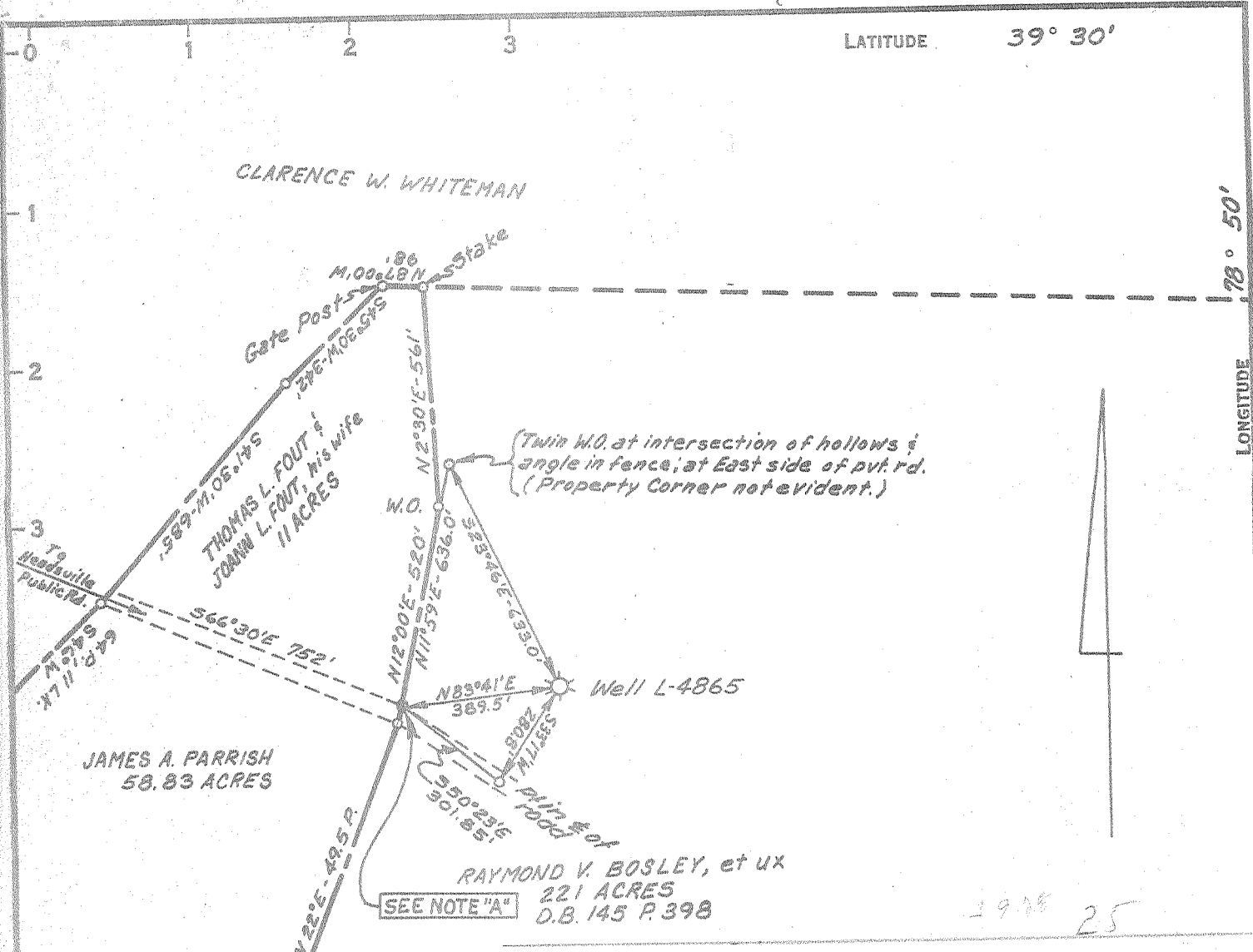
COMPANY THE MANUFACTURERS LIGHT & HEAT CO.  
 ADDRESS 800 UNION TRUST BLDG, PITTSBURGH, PA.  
 FARM RAYMOND V. BOSLEY, et ux  
 MAP Q-32-13 ACRES 221 of 320 Unit LEASE NO. 34079  
 WELL (FARM) NO. 1 SERIAL NO. L-4865  
 ELEVATION (SPIRIT LEVEL) 918  
 QUADRANGLE KEYSER  
 COUNTY MINERAL DISTRICT CABIN RUN  
 POINT OF PROVEN ELEVATION U.S.G.S. B.M. AT BRIDGE AT HEADSVILLE-685  
 FILE NO. \_\_\_\_\_ DRAWING NO. Y-28-793  
 DATE JAN. 21, 1971 SCALE 1" = 400'

STATE OF WEST VIRGINIA  
 DEPARTMENT OF MINES  
 OIL AND GAS DIVISION  
 CHARLESTON  
 WELL LOCATION MAP

FILE NO. Min-7-P

+ DENOTES LOCATION OF WELL ON UNITED STATES TOPOGRAPHIC MAPS, SCALE 1 TO 62,500, LATITUDE AND LONGITUDE LINES BEING REPRESENTED BY BORDEN LINES AS SHOWN.

- DENOTES ONE INCH SPACES ON BORDER LINE OF ORIGINAL TRACING.



NOTE "A" Set stone in the North Boundary Line of the District Road leading from Fountain to Headsville, near Sta. 210+07 of said road and located as follows:  
 S 42°30'E - 94.6' from the South corner of a concrete block bldg. on this lot.  
 46.5' Eastward from the center of the Northend of a culvert.  
 S 12°30'W - 10.4' from a painter marked "W.O.". At a pt. 41' on the 3rd. line of a tract of which this is a part.

Note: Well ties are 1971 Mag. Deed description is not adequate to show farmlines of Raymond V. Bosley.

1.60 S 39°25'  
 3.32 W 7950  
 Keyser C-15 quad  
 Kla 62193

825  
 5660

COAL OWNED BY NO COAL

- NEW LOCATION
- RECONDITION
- DRILL DEEPER
- ABANDONMENT

"I, the undersigned, hereby certify that this map is correct to the best of my knowledge and belief and shows all the information required by paragraph 6 of the rules and regulations of the oil and gas section of the mining laws of West Virginia."  
 Minimum degree of accuracy is one part in 300

F.B. 1167 PG. 24

Signed John D. Cole 16236-E (PA)

COMPANY THE MANUFACTURERS LIGHT & HEAT CO.  
 ADDRESS 800 UNION TRUST BLDG, PITTSBURGH, PA.  
 FARM RAYMOND V. BOSLEY, et ux  
 MAP Q-32-13 ACRES 221 of 320 Unit LEASE NO. 34079  
 WELL (FARM) NO. 1 SERIAL NO. L-4865  
 ELEVATION (SPIRIT LEVEL) 918  
 QUADRANGLE KEYSER  
 COUNTY MINERAL DISTRICT CABIN RUN  
 POINT OF PROVEN ELEVATION U.S.G.S. B.M. AT BRIDGE AT HEADSVILLE-685

FILE NO. \_\_\_\_\_ DRAWING NO. Y-78-793  
 DATE JAN. 21, 1971 SCALE 1" = 400'

STATE OF WEST VIRGINIA  
 DEPARTMENT OF MINES  
 OIL AND GAS DIVISION  
 CHARLESTON  
 WELL LOCATION MAP  
 FILE NO. Min-7

+ DENOTES LOCATION OF WELL ON UNITED STATES TOPOGRAPHIC MAPS. SCALE 1 TO 62,500. LATITUDE AND LONGITUDE LINES BEING REPRESENTED BY BORDER LINES AS SHOWN.  
 - DENOTES ONE INCH SPACES ON BORDER LINE OF ORIGINAL TRACING.



STATE OF WEST VIRGINIA  
DEPARTMENT OF MINES  
OIL AND GAS WELLS DIVISION

RECEIVED

APR 7 1971

OIL & GAS DIVISION  
DEPT. OF MINES

Rotary   
Spudder

Cable Tools

Storage

Oil or Gas Well

C. NOLL

DRY  
Gas  
(KIND)

Quadrangle Keyser 15

Permit No. Min - 7

WELL RECORD

Company The Manufacturers Light and Heat Company  
 Address 800 Union Trust Building  
 Farm Raymond V. Bosley, et ux Acres 221  
 Location (waters) \_\_\_\_\_  
 Well No. L-4865 Elev. 918'  
 District Gabin Run County Mineral  
 The surface of tract is owned in fee by Mrs. Raymond V. Bosley  
 Address Scherr, W. Va.  
 Mineral rights are owned by Mrs. Raymond V. Bosley  
 Address Scherr, W. Va.  
 Drilling commenced 3-11-71  
 Drilling completed 3-27-71  
 Date Shot \_\_\_\_\_ From \_\_\_\_\_ To \_\_\_\_\_  
 With \_\_\_\_\_  
 Open Flow Not taken \_\_\_\_\_ Inch  
 \_\_\_\_\_ /10ths Merc. in. \_\_\_\_\_ Inch  
 Volume No show \_\_\_\_\_ Cu. Ft.  
 Rock Pressure \_\_\_\_\_ lbs. \_\_\_\_\_ hrs.  
 Oil \_\_\_\_\_ bbls., 1st 24 hrs.  
 WELL ACIDIZED (DETAILS) Well not acidized  
 WELL FRACTURED (DETAILS) Well not fractured

Casing and Tubing	Used in Drilling	Left in Well	Packers
Size			Kind of Packer
16			Size of
13 3/8"	44.87'	44.87'	Depth set
10			Perf. top
8 5/8"	339.4'	339.4'	Perf. bottom
6 3/4"			Perf. top
5 3/16"			Perf. bottom
4 1/2"			
3"			
2"			
Liners Used			

Attach copy of cementing record.  
 CASING CEMENTED 8 5/8" SIZE 339' No. Ft. 3-13-71 Date  
 Amount of cement used (bags) 210 (150-50/50 Poz, 50-Reg. with 2% cal., 10-gel)  
 Name of Service Co. Halliburton  
 COAL WAS ENCOUNTERED AT None FEET \_\_\_\_\_ INCHES  
 \_\_\_\_\_ FEET \_\_\_\_\_ INCHES FEET \_\_\_\_\_ INCHES  
 \_\_\_\_\_ FEET \_\_\_\_\_ INCHES FEET \_\_\_\_\_ INCHES

RESULT AFTER TREATMENT (Initial open Flow or bbls.) N/A  
 ROCK PRESSURE AFTER TREATMENT N/A HOURS \_\_\_\_\_  
 Fresh Water \_\_\_\_\_ Feet \_\_\_\_\_ Salt Water \_\_\_\_\_ Feet \_\_\_\_\_  
 Producing Sand \_\_\_\_\_ Depth \_\_\_\_\_

Formation	Color	Hard or Soft	Top Feet	Bottom Feet	Oil, Gas or Water	Depth	Remarks
SHALE (INCL. HAMILTON FM.)			0	2803			
✓ MARCELLUS SH.			2803	2878			Faulted Zone 2895'-3375'
SELINGROVE LS.			2878	3368			
✓ TIoga FM.			3368	3433			
✓ ONONDAGA LS. (INCL. NEEDMORE SH.)			3433	3688			
✓ ORISKANY SS.			3688	3893			
✓ HELDERBERG			3893	4029 T.D.			

485