

LATITUDE 37° 57' 30"

82° 17' 30"

LONGITUDE



7'5 OGIS topo location

7.5' loc 1.44S  
0.17W

15' loc 4.32S  
(calc.) 2.44W

Company \_\_\_\_\_

Farm \_\_\_\_\_

*Naugatuck NE*

Quad WILSONDALE 7 1/2'

County Mingo

District HARVEY

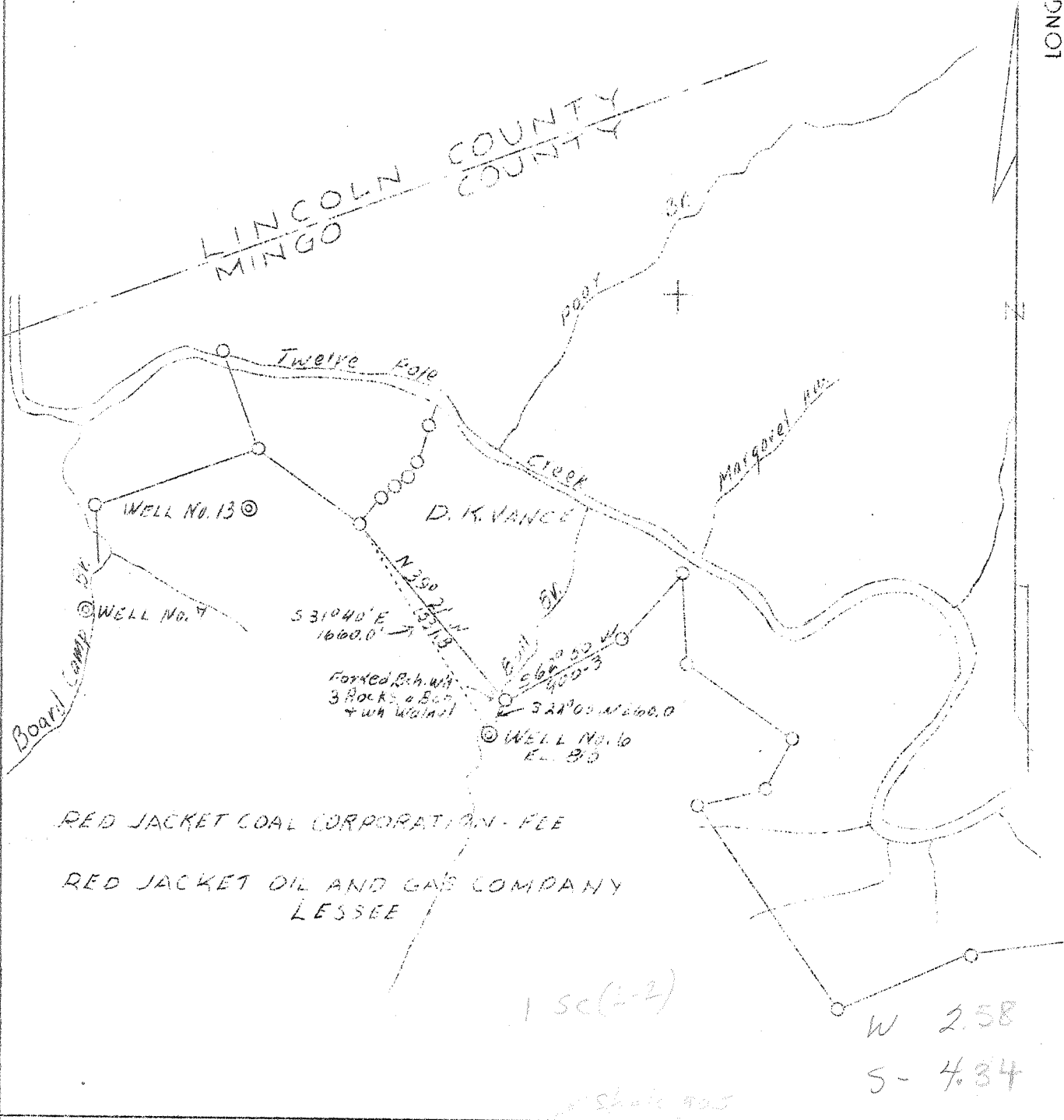
WELL LOCATION MAP

File No. 059-3047

*Deep*

LATITUDE 38°00'

LONGITUDE 82°10'



Company Red Jacket Oil & Gas Co.  
 Address 115 E. Rich St. Columbus, O.  
 Farm Red Jacket Coal Corporation  
 Acres 3004  
 Well (Farm) No. 6  
 Quadrangle Naugatuck *N/E*  
 County Mingo  
 District Harvey  
 Eng. Fred B. Rochester  
 Date 12/29/38  
 Scale 1" - 1000'

STATE OF WEST VIRGINIA  
 Department of Mines  
 OIL AND GAS DIVISION  
 Charleston

WELL LOCATION MAP  
 File No. *Mingo-47*

x Denotes location of well on U.S. Topographic Maps, scale 1 to 62,500, latitude and longitude lines being represented by border lines as shown.

- Denotes one inch spaces on border line of original tracing.

## Red Jacket Coal Corporation No. 6 Well.

Harvey District, Mingo County, W. Va.

By Red Jacket Oil &amp; Gas Company.

Permit No. Min-47 (deepening).

Elevation, 810' L.

139 M. cu. ft. gas; R. P., 500 lbs.

Located 4.4 mi. S. of 38° 00' and 2.61 mi. W. of 82° 15'—NE—Nauga-

tuck Quadrangle.

On east side of Bull Branch of Twelvepole Creek.

1.6 mi. N. W. of Breeden, 2.08 mi. S. E. of Wilsendale.

	Top.	Bottom.	Thickness.	Elevation (top)
Big Lime -----	1210	1388	178	— 400
Big Injun Sand-----	1428	1470	40	— 618
Berea Sand -----	1992	2040	48	—1182
Corniferous Lime-----	3300	3305	5+	—2490

Thickness, Devonian Shales, 1260 feet.

Total depth, 3305'.

Remarks: Completed deepening from 2120' Feb. 9, 1939.

Shot at 3000-3100'.

Light gas show, 3040'.

On 3004 acres.

WEST VIRGINIA DEPARTMENT OF MINES

OIL & GAS DIVISION

WELL RECORD

Permit No. Min-47 D

Gas Well

Naugatuck Quad.

Amended Log 5-25-35

CASING & TUBING

Company	Red Jacket Oil & Gas	10	21-6
Address	1042 Jefferson Ave., Huntington, W.Va.	8-1/4	317
Farm	Red Jacket Coal Corp. ACRES -	6-5/8	806
Location	Bull Branch	5-3/16	2103
Well No.	6 ELEV. 810		
District	Harvey - Mingo County	CASING CEMENTED:	
Surface & Mineral	Red Jacket Coal Corp.	Size -	5-3/16
Address	115 East Rich, Columbus, Ohio	Feet -	2103
Drilling commenced	Jan. 20, 1939	Date -	12/26/39 ?
Drilling completed	Feb. 9, 1939		
Date shot	2/28 - Depth 3000-3100' with 650 gellatin		
Open Flow	13.75 inches water in 1"		
Volume	138,600 c.f.		
Rock Pressure	500 lbs. 48 hrs.		
Water	-		

Formation Color <sup>Mar</sup> 2 TOP Base Result Formation Color <sup>Mar</sup> 5 TOP Base Result

Formation Color	Mar 2	TOP	Base	Result	Formation Color	Mar 5	TOP	Base	Result
Lime Shell		2166		2405					
Black Slate		2405		2480					
Brown Shale		2480		2640					
White Slate		2640		2670					
Brown Shale		2670		2800					
Black Limb		2800		2820					
White Shale		2820		2830					
Brown Shale good		2830		2910	Good shale				
Gray Lime hard		2910		2925					
Brown Shale		2925		3060	Light show of gas at 3040				
Gray Sand		3060		3075					
Slate & Shells		3075		3290					
Brown Shale		3290		3300					
Corniferous Limb		3300		3305	Bottom of hole				
<i>d shale</i>									
<i>big lime</i>		1210		178	3300				
<i>big lime</i>		1428		40	810				
<i>beres</i>		1992		48	<u>2490</u>				
		T.D.		2120					