

WW-7  
8-30-06



West Virginia Department of Environmental Protection  
Office of Oil and Gas  
**WELL LOCATION FORM: GPS**

API: 47-059-00259 WELL NO.: 806778  
 FARM NAME: F.D Caldwell 60  
 RESPONSIBLE PARTY NAME: Core Appalachia Operating, LLC  
 COUNTY: Mingo DISTRICT: Kermit  
 QUADRANGLE: Webb  
 SURFACE OWNER: Wayne County Land & Mineral Co.  
 ROYALTY OWNER: Wayne County Land & Mineral Co.  
 UTM GPS NORTHING: 4192997.28m  
 UTM GPS EASTING: 378866.68m GPS ELEVATION: 372.78m [1223.02']

The Responsible Party named above has chosen to submit GPS coordinates in lieu of preparing a new well location plat for a plugging permit or assigned API number on the above well. The Office of Oil and Gas will not accept GPS coordinates that do not meet the following requirements:

1. Datum: NAD 1983, Zone: 17 North, Coordinate Units: meters, Altitude: height above mean sea level (MSL) – meters.
2. Accuracy to Datum – 3.05 meters
3. Data Collection Method:  
Survey grade GPS  : Post Processed Differential

Real-Time Differential

Mapping Grade GPS  : Post Processed Differential

Real-Time Differential

4. Letter size copy of the topography map showing the well location.

I the undersigned, hereby certify this data is correct to the best of my knowledge and belief and shows all the information required by law and the regulations issued and prescribed by the Office of Oil and Gas.

Signature

EHS Specialist  
Title

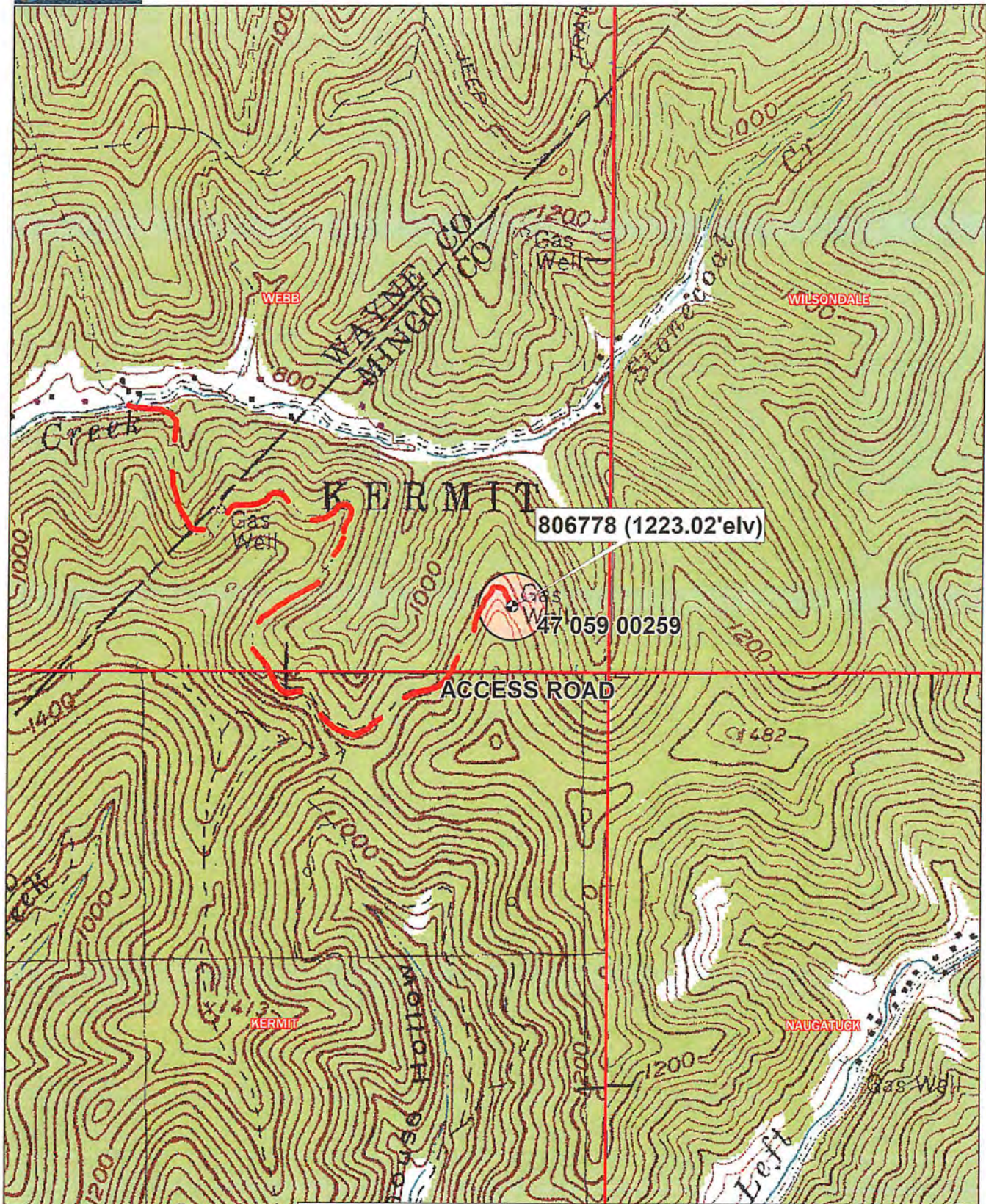
2/11/19  
Date

RECEIVED  
Office of Oil and Gas

FEB 22 2019

WV Department of  
Environmental Protection



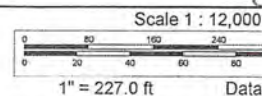


806778 (1223.02'elv)

47-059-00259

# WELL 806778 P&A TOPO MAP

Data use subject to license.  
© DeLorme. XMap® 8.  
www.delorme.com



RECEIVED  
Office of Oil and Gas  
FEB 22 2019  
Data Zoom 14-1  
WV Department of  
Environmental Protection