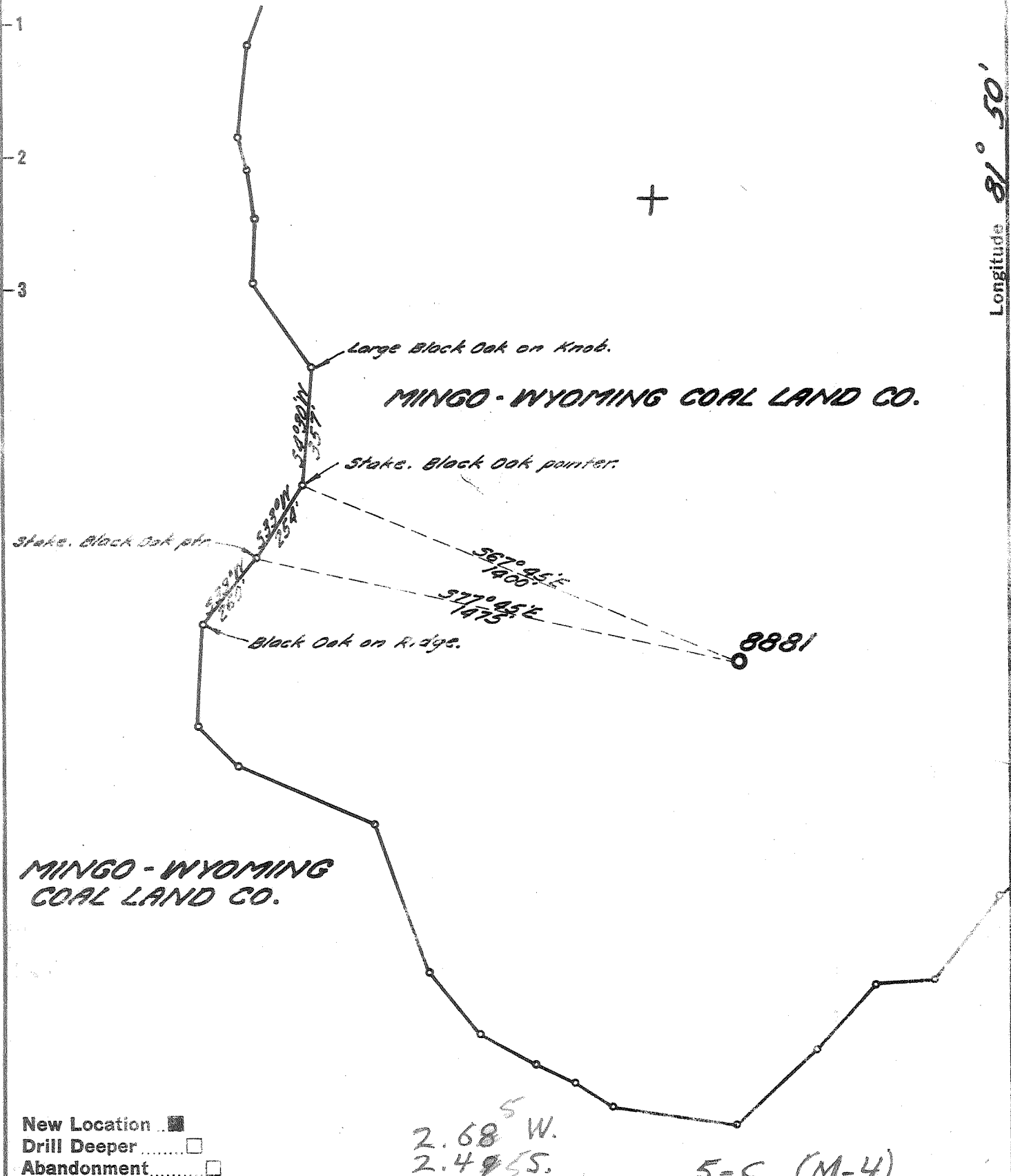


Latitude 37° 40'

Longitude 81° 50'



New Location

Drill Deeper

Abandonment

Company UNITED FUEL GAS CO.

Address CHARLESTON, W. VA.

Farm MINGO-WYOMING COAL LAND CO.

Tract \_\_\_\_\_ Acres 2645.65 Lease No. 49340

Well (Farm) No. 2 Serial No. 8881

Elevation (Spirit Level) 1147.06'

Quadrangle GILBERT-C

County MINGO District STAFFORD

Engineer Hubert R. Howell

Engineer's Registration No. 2529

File No. 48-9 Drawing No. \_\_\_\_\_

Date 7-15-59 Scale 1" = 400'

STATE OF WEST VIRGINIA  
DEPARTMENT OF MINES  
OIL AND GAS DIVISION  
CHARLESTON

WELL LOCATION MAP  
FILE NO. MIN-641

+ Denotes location of well on United States Topographic Maps, scale 1 to 62,500, latitude and longitude lines being represented by border lines as shown.

- Denotes one inch spaces on border line of original tracing.

samples 5300'-5480' 3-B 271 Deep Well



STATE OF WEST VIRGINIA  
DEPARTMENT OF MINES  
OIL AND GAS DIVISION 17

Quadrangle Gilbert

Permit No. MIN-641

WELL RECORD

Oil or Gas Well Gas  
(KIND)

Company United Fuel Gas Company  
Address P.O. Box 1273; Charleston 25, W.Va.  
Farm Mingo-Wyoming Coal Land Co. #2 Acres 2645.65  
Location (waters) Guyandotte River  
Well No. 8881 Elev. 1147.06  
District Stafford County Mingo  
The surface of tract is owned in fee by \_\_\_\_\_  
Address \_\_\_\_\_

Mineral rights are owned by Mingo-Wyoming Coal Land Co. #2  
P.O. Box 540 Address Logan, W. Va.

Drilling commenced 1-30-61  
Drilling completed 2-22-61  
Date Shot - \_\_\_\_\_ From \_\_\_\_\_ To \_\_\_\_\_  
With \_\_\_\_\_

Open Flow 30/10ths Water in 1 Inch  
12/10ths Merc. in 2 Inch  
Volume 204,000 - Big Lime 58 M; Orisk 146 M Cu. Ft.  
Rock Pressure 1075 lbs. 48 hrs.  
Oil \_\_\_\_\_ bbls., 1st 24 hrs.  
WELL ACIDIZED \_\_\_\_\_  
WELL FRACTURED \_\_\_\_\_

Casing and Tubing	Used in Drilling	Left in Well	Packers
Size			
16			Kind of Packer <u>Multi Cone</u>
18 <u>3/8</u>		<u>20'</u>	<u>3 1/2" x 5 1/2"</u>
10 <u>3/4</u>		<u>461</u>	Size of _____
<u>8 3/4</u>			
<u>5 3/16</u>		<u>2816</u>	Depth set <u>5410'</u>
<u>3 1/2</u>		<u>5463</u>	Perf. top _____
<u>2</u>			Perf. bottom _____
Liners Used			Perf. top _____
			Perf. bottom _____

CASING CEMENTED \_\_\_\_\_ SIZE \_\_\_\_\_ No. Ft. \_\_\_\_\_ Date \_\_\_\_\_  
COAL WAS ENCOUNTERED AT \_\_\_\_\_ FEET \_\_\_\_\_ INCHES  
\_\_\_\_\_ FEET \_\_\_\_\_ INCHES FEET \_\_\_\_\_ INCHES  
\_\_\_\_\_ FEET \_\_\_\_\_ INCHES FEET \_\_\_\_\_ INCHES

RESULT AFTER TREATMENT \_\_\_\_\_

ROCK PRESSURE AFTER TREATMENT \_\_\_\_\_

Fresh Water 205 Feet Salt Water \_\_\_\_\_ Feet

Formation	Color	Hard or Soft	Top	Bottom	Oil, Gas or Water	Depth	Remarks
Surface			0	100			
Slag & Shale			100	165	Water 205'		
Slag & Sand			165	220			
Shale			220	315	Show gas 2652-2656'		
Sand			315	340			
Slate & Shells			340	405	Gas 2743-2746' 5/10 W 2" 94 M		
Sand			405	642			
Shale			642	725	Gas increased to 7/10 W 2" 112 M in Oriskany		
Lime			725	730			
Sand			730	775			
Slate			775	800	Hole reduced at 3410'		
Sand			800	1052			
Slate			1052	1090	Test before acidized 5/10 W 2" 94 M		
Sand			1090	1175	Acidized 2-14-61 with 3000 gallons 15% Hcl retarded, 1000 gallons 15% regular and 2000 gallons 7 1/2% regular		
Slate			1175	1223	Test after acidized 5/10 W 2" 94 M.		
Sand			1223	1370			
Slate			1370	1405			
Red Rock			1405	1415			
Slate			1415	1560	Perforated at 5428-5430'		
Sand			1560	1570			
Slate			1570	1580	Acidized Oriskany 4-6-61 with 500 gallon 15% intensified acid and 4500 gallons 15% regular acid		
Red Rock			1580	1593			
Lime			1593	1600			
Slate			1600	1685	Test after acidized 10/10 W 2" 133 M		
Sand			1685	1770			
Slate			1770	1810	Final open flow 30/10 W 1" 58 M Big Lime		
Sand			1810	1955	12/10 W 2" 146 M Orisk.		
Red Rock			1955	1975			
Slate & Shells			1975	2090			
Sand & Shale			2090	2155	Shut in 4-14-61 in 3 1/2" tubing.		

Formation	Color	Hard or Soft	Top /	Bottom	Oil, Gas or Water	Depth Found	Remarks
Shale			2155	2170	LOGS RUN: Gamma Ray 2 runs G. G. Density 2 runs Induction 2 runs Temperature 2 runs		
Red Rock			2170	2185			
Slate & Shale			2185	2295			
Red Rock			2295	2303			
Sand			2303	2355			
Pencil Cave			2355	2380			
Big Lime			2380	2780			
Injun Sand			2780	2860			
Slate & Shells			2860	2930			
Weir Sand			2930	2995			
Slate & Shells			2995	3340			
Coffee Shale			3340	3360			
Berea			3360	3395			
Shale			3395	3410			
Sand & Shale			3410	4500			
Shale			4500	5400			
Corniferous Lime			5400	5428			
Sandy Shale			5428	5436			
Oriskany			5436	5442			
Shale			5442	5446			
Oriskany			5446	5451			
Corniferous Lime			5451	5463			
Total Depth			5463'				
				5463			
				3395			
				2068			
				Exp.			
				Col.			
						5400	5436
						1158	1158
						4242	4278

Date August 15, 1961

APPROVED UNITED FUEL GAS COMPANY, Owner

By S. R. General  
(Title)

Supt., Civil Engineering Dept.