

POCAHONTAS LAND CORPORATION
298.34 ACRES±
TRACT #214

MEADOR CEMETERY

CARNEGIE NATURAL GAS CO. LEASE (POCA CARNEGIE) 38,753.36 ACRES± WELL NO. WV 511671

WELL NO. WV 511671
BOTTOM HOLE
STATE PLANE COORDINATES
SOUTH ZONE (NAD 27)

N. 224,967
E. 1,699,862

LAT=(N) 37.61322
LONG=(W) 82.03616

NANCY SIPPLE ET AL
10 ACRES±

VIRGIL LEE
SIPPLE ET AL
10 ACRES±

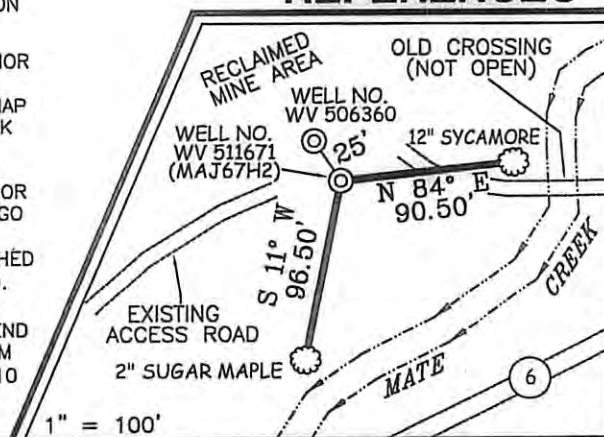
VIRGIL LEE
SIPPLE ET AL
10 ACRES±

PATRICIA
STATEN
54 ACRES±

NOTES ON SURVEY

1. TIES TO WELLS AND CORNERS ARE BASED ON GRID NORTH FOR THE WV STATE PLANE COORDINATE SYSTEM SOUTH ZONE NAD '27.
2. TIES TO REFERENCES ARE BASED ON MAGNETIC NORTH 01/10/08.
3. ADVERSE MINERAL TRACT AND INTERIOR SURFACE BOUNDARIES TAKEN FROM POCAHONTAS LAND CORP. PROPERTY MAP MINGO-LOGAN SHEET 5 & DEED BOOK 138 PAGE 409.
4. SURFACE OWNER AND ADJOINER INFORMATION TAKEN FROM THE ASSESSOR AND COUNTY CLERK RECORDS OF MINGO COUNTY IN JULY, 2007.
5. WELL LAT./LONG. (NAD'27) ESTABLISHED BY DGPS(SUBMETER MAPPING GRADE).
6. ORIGINAL PLAT DATED 01/15/08 REVISED 03/17/10 TO ROTATE & EXTEND HORIZONTAL LEG AND CHANGE BOTTOM HOLE COORDINATES. REVISED 05/04/10 TO ADD UTM COORDINATES.

REFERENCES



NORTH

WELL NO. WV 511671

MATE

TO NEWTOWN

S 54°32' W 2766.35'

47-059-0566

POCAHONTAS LAND CORPORATION

ADVERSE MINERAL TRACT

32.74 ACRES±

(SEE NOTE 3)

POCAHONTAS LAND CORPORATION

32.74 ACRES± (TRACT#220)

WELL NO. WV 511671

STATE PLANE COORDINATES

SOUTH ZONE (NAD 27)

N. 228,992

E. 1,694,135

LAT=(N) 37.62409

LONG=(W) 82.05608

UTM (NAD 83)

N. 4,164,645

E. 406,819

POCAHONTAS LAND CORPORATION

4.89 ACRES±

TRACT #220

POCAHONTAS LAND CORPORATION

32.14 ACRES±

TRACT #174 & #219

POCAHONTAS LAND CORPORATION

662.80 ACRES±

TRACT #174 & #219

POCAHONTAS LAND CORPORATION

32.74 ACRES±

TRACT #214

POCAHONTAS LAND CORPORATION

32.74 ACRES±

TRACT #220

POCAHONTAS LAND CORPORATION

32.74 ACRES±

TRACT #220

POCAHONTAS LAND CORPORATION

32.74 ACRES±

TRACT #220

POCAHONTAS LAND CORPORATION

32.74 ACRES±

TRACT #220

POCAHONTAS LAND CORPORATION

32.74 ACRES±

TRACT #220

POCAHONTAS LAND CORPORATION

32.74 ACRES±

TRACT #220

POCAHONTAS LAND CORPORATION

32.74 ACRES±

TRACT #220

POCAHONTAS LAND CORPORATION

32.74 ACRES±

TRACT #220

POCAHONTAS LAND CORPORATION

32.74 ACRES±

TRACT #220

POCAHONTAS LAND CORPORATION

32.74 ACRES±

TRACT #220

POCAHONTAS LAND CORPORATION

32.74 ACRES±

TRACT #220

POCAHONTAS LAND CORPORATION

32.74 ACRES±

TRACT #220

I THE UNDERSIGNED, HEREBY CERTIFY THAT THIS PLAT IS CORRECT TO THE BEST OF MY KNOWLEDGE AND BELIEF AND SHOWS ALL THE INFORMATION REQUIRED BY LAW AND THE REGULATIONS ISSUED AND PRESCRIBED BY THE DIVISION OF ENVIRONMENTAL PROTECTION.

P.S. 677
Gregory A. Smith



(+) DENOTES LOCATION OF WELL ON UNITED STATES TOPOGRAPHIC MAPS.
DATE MAY 04 , 20 10
OPERATORS WELL NO. WV 511671
API WELL NO. 47-059-02154H
STATE COUNTY PERMIT

CANCELLED

STATE OF WEST VIRGINIA
DIVISION OF ENVIRONMENTAL PROTECTION
OFFICE OF OIL AND GAS



MINIMUM DEGREE OF ACCURACY 1 / 2500 FILE NO. 4672P511671R2 (253-14)
PROVEN SOURCE OF ELEVATION DGPS (SUBMETER MAPPING GRADE) SCALE 1" = 1,000'

WELL TYPE: OIL GAS X LIQUID INJECTION WASTE DISPOSAL IF "GAS" PRODUCTION X STORAGE DEEP SHALLOW X

LOCATION: ELEVATION 1,208' WATERSHED MATE CREEK

DISTRICT MAGNOLIA COUNTY MINGO QUADRANGLE MAJESTIC 7.5'

SURFACE OWNER POCAHONTAS LAND CORPORATION ACREAGE 662.8±

ROYALTY OWNER PENN VIRGINIA OIL & GAS CORPORATION (38,753.36±) / COTIGA DEVELOPMENT COMPANY (100±)

PROPOSED WORK: LEASE NO. 717459 / 080687

DRILL X CONVERT DRILL DEEPER REDRILL FRACTURE OR STIMULATE X PLUG OFF OLD

FORMATION PERFORATE NEW FORMATION PLUG AND ABANDON CLEAN OUT AND REPLUG OTHER

PHYSICAL CHANGE IN WELL (SPECIFY) TARGET FORMATION DEVONIAN SHALE

ESTIMATED DEPTH 5,220' (TOTAL VERTICAL DEPTH)

WELL OPERATOR EQT PRODUCTION COMPANY DESIGNATED AGENT REX C. RAY
ADDRESS 1710 PENNSYLVANIA AVENUE ADDRESS 1710 PENNSYLVANIA AVENUE
 CHARLESTON, WV 25302 CHARLESTON, WV 25302