

# CARNEGIE NATURAL GAS CO. LEASE (POCA-CARNEGIE) 38,753.36 ACRES± WELL NO. WV 512787

BOTTOM HOLE  
WELL NO.  
WV 512787

N 58°05' W  
7000.00'

POCAHONTAS LAND  
CORPORATION  
160.04 ACRES±

POCAHONTAS LAND  
CORPORATION  
32.38 ACRES±

POCAHONTAS LAND  
CORPORATION  
34.16 ACRES±

POCAHONTAS  
LAND  
CORPORATION  
244.56 ACRES±

POCAHONTAS  
LAND  
CORPORATION  
418.12 ACRES±

WELL NO. WV 512787  
STATE PLANE COORDINATES  
SOUTH ZONE (NAD'27)

N. 225,531  
E. 1,728,106

LAT=(N) 37.61559  
LONG=(W) 81.93868

UTM (NAD'83)  
N. 4,163,592  
E. 417,171

POCAHONTAS LAND  
CORPORATION  
879.15 ACRES±

POCAHONTAS LAND  
CORPORATION  
244.56 ACRES±

WELL NO.  
WV 512787

POCAHONTAS  
LAND CORP.  
264.27 AC.±

S 79°25' E  
6320.18'

POCAHONTAS  
LAND  
CORPORATION  
648.05 ACRES±

47-059-0963-P

BOTTOM HOLE  
WELL NO. WV 512787  
STATE PLANE COORDINATES  
SOUTH ZONE (NAD'27)

N. 229,232  
E. 1,722,164

LAT=(N) 37.62559  
LONG=(W) 81.95932

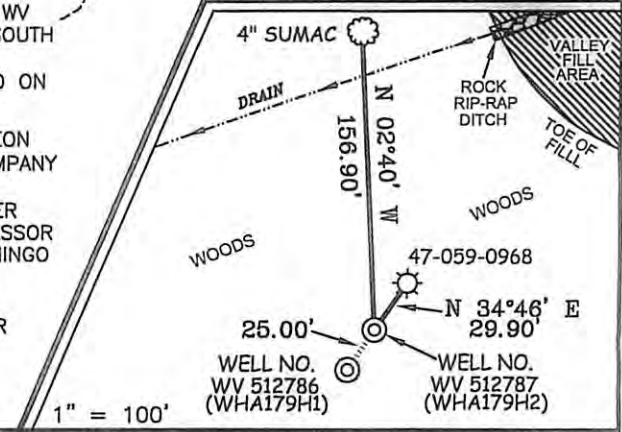
UTM (NAD'83)  
N. 4,164,719  
E. 415,361

MINGO-LOGAN  
COAL  
2.5 AC.±

### NOTES ON SURVEY

1. TIES TO WELLS AND CORNERS ARE BASED ON GRID NORTH FOR THE WV STATE PLANE COORDINATE SYSTEM SOUTH ZONE NAD '27.
2. TIES TO REFERENCES ARE BASED ON MAGNETIC NORTH 01/28/10.
3. LEASE BOUNDARY SHOWN HEREON TAKEN FROM POCAHONTAS LAND COMPANY PROPERTY MAPS (SHEET 14).
4. SURFACE OWNER AND ADJOINER INFORMATION TAKEN FROM THE ASSESSOR AND COUNTY CLERK RECORDS OF MINGO COUNTY IN JULY, 2009.
5. WELL LAT./LONG. (NAD'27) ESTABLISHED BY DGPS(SUBMETER MAPPING GRADE).

### REFERENCES



I THE UNDERSIGNED, HEREBY CERTIFY THAT THIS PLAT IS CORRECT TO THE BEST OF MY KNOWLEDGE AND BELIEF AND SHOWS ALL THE INFORMATION REQUIRED BY LAW AND THE REGULATIONS ISSUED AND PRESCRIBED BY THE DIVISION OF ENVIRONMENTAL PROTECTION.

P.S. 677

*Gregory A. Smith*



(+) DENOTES LOCATION OF WELL ON UNITED STATES TOPOGRAPHIC MAPS.

DATE JULY 29, 20 10

OPERATORS WELL NO. WV 512787

API WELL NO. 47-059-02166H  
STATE CANDELER COUNTY PERMIT

MINIMUM DEGREE OF ACCURACY 1/2500 FILE NO. 4672P512787 (289-69)

PROVEN SOURCE OF ELEVATION DGPS (SUBMETER MAPPING GRADE) SCALE 1" = 2000'

STATE OF WEST VIRGINIA  
DIVISION OF ENVIRONMENTAL PROTECTION  
OFFICE OF OIL AND GAS



WELL TYPE: OIL  GAS  LIQUID INJECTION  WASTE DISPOSAL  IF "GAS" PRODUCTION  STORAGE  DEEP  SHALLOW

LOCATION: ELEVATION 1,305' WATERSHED BEECH FORK OF BEN CREEK

DISTRICT STAFFORD COUNTY MINGO QUADRANGLE WHARNCLIFFE 7.5'

SURFACE OWNER POCAHONTAS LAND CORPORATION ACREAGE 264.27±

ROYALTY OWNER PENN VIRGINIA OIL & GAS CORPORATION LEASE ACREAGE 38,753.36±

PROPOSED WORK: LEASE NO. 717459

DRILL  CONVERT  DRILL DEEPER  REDRILL  FRACTURE OR STIMULATE  PLUG OFF OLD

FORMATION  PERFORATE NEW FORMATION  PLUG AND ABANDON  CLEAN OUT AND REPLUG  OTHER

PHYSICAL CHANGE IN WELL (SPECIFY) \_\_\_\_\_ TARGET FORMATION LOWER HURON / SILTSTONE

ESTIMATED DEPTH 4,700' (TOTAL VERTICAL DEPTH)

WELL OPERATOR EQT PRODUCTION COMPANY DESIGNATED AGENT REX C. RAY

ADDRESS 1710 PENNSYLVANIA AVENUE ADDRESS 1710 PENNSYLVANIA AVENUE  
CHARLESTON, WV 25302 CHARLESTON, WV 25302