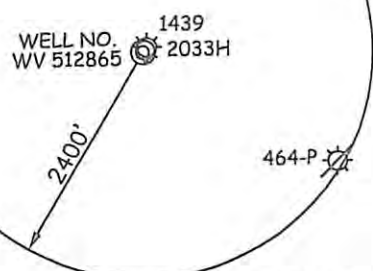
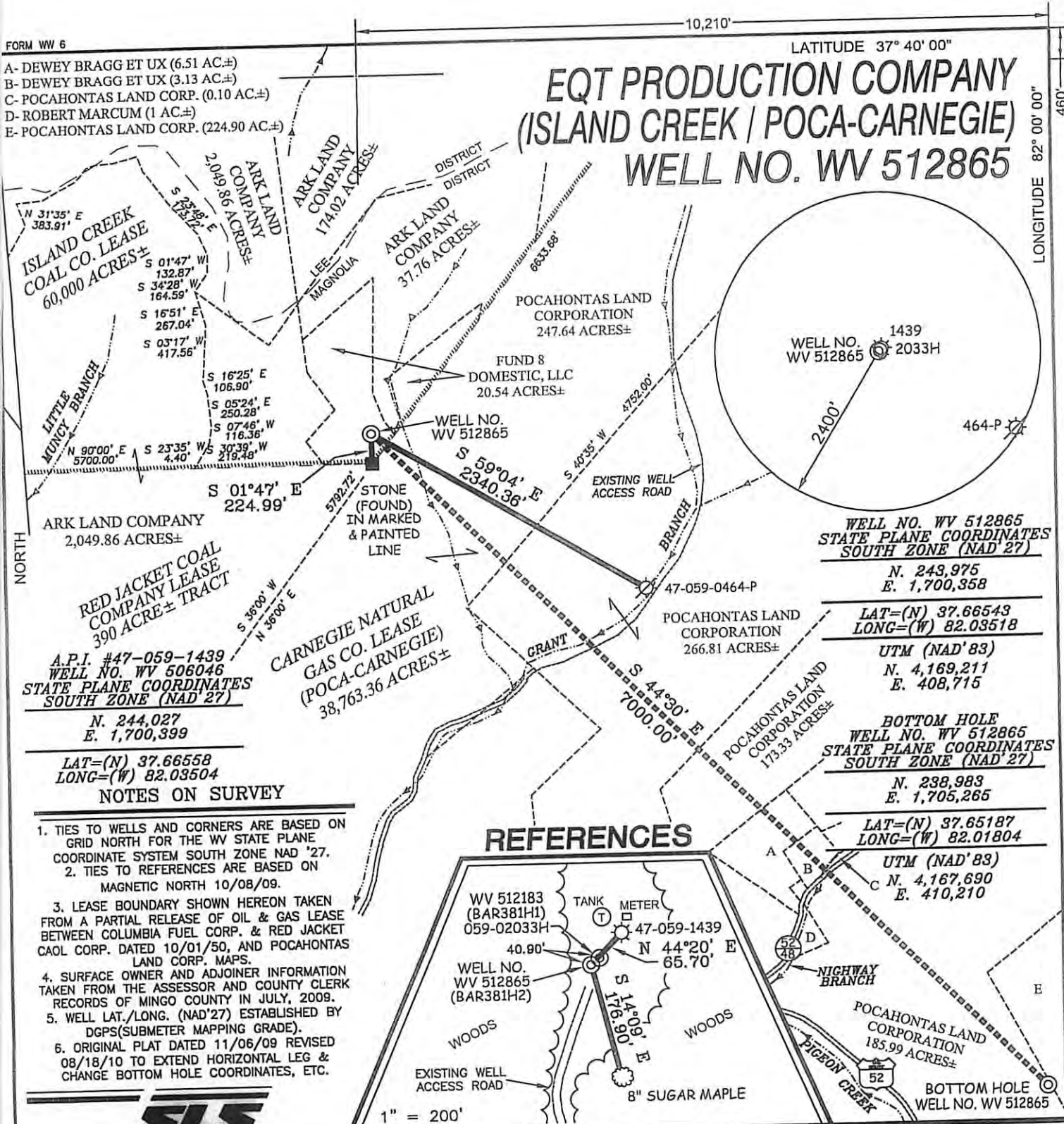


- A- DEWEY BRAGG ET UX (6.51 AC.±)
- B- DEWEY BRAGG ET UX (3.13 AC.±)
- C- POCAHONTAS LAND CORP. (0.10 AC.±)
- D- ROBERT MARCUM (1 AC.±)
- E- POCAHONTAS LAND CORP. (224.90 AC.±)

EQT PRODUCTION COMPANY (ISLAND CREEK / POCA-CARNEGIE) WELL NO. WV 512865



WELL NO. WV 512865
STATE PLANE COORDINATES
SOUTH ZONE (NAD '27)

N. 243,975
E. 1,700,358

LAT=(N) 37.66543
LONG=(W) 82.03518

UTM (NAD' 83)
N. 4,169,211
E. 408,715

BOTTOM HOLE
WELL NO. WV 512865
STATE PLANE COORDINATES
SOUTH ZONE (NAD '27)

N. 238,983
E. 1,705,265

LAT=(N) 37.65187
LONG=(W) 82.01804

UTM (NAD' 83)
N. 4,167,690
E. 410,210

RED JACKET COAL
COMPANY LEASE
390 ACRE± TRACT
A.P.I. #47-059-1439
WELL NO. WV 506046
STATE PLANE COORDINATES
SOUTH ZONE (NAD '27)

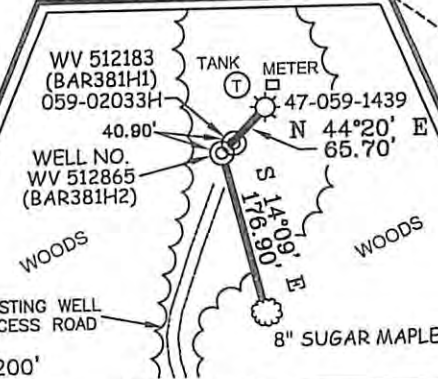
N. 244,027
E. 1,700,399

LAT=(N) 37.66558
LONG=(W) 82.03504

NOTES ON SURVEY

1. TIES TO WELLS AND CORNERS ARE BASED ON GRID NORTH FOR THE WV STATE PLANE COORDINATE SYSTEM SOUTH ZONE NAD '27.
2. TIES TO REFERENCES ARE BASED ON MAGNETIC NORTH 10/08/09.
3. LEASE BOUNDARY SHOWN HEREON TAKEN FROM A PARTIAL RELEASE OF OIL & GAS LEASE BETWEEN COLUMBIA FUEL CORP. & RED JACKET COAL CORP. DATED 10/01/50, AND POCAHONTAS LAND CORP. MAPS.
4. SURFACE OWNER AND ADJOINER INFORMATION TAKEN FROM THE ASSESSOR AND COUNTY CLERK RECORDS OF MINGO COUNTY IN JULY, 2009.
5. WELL LAT./LONG. (NAD'27) ESTABLISHED BY DGPS(SUBMETER MAPPING GRADE).
6. ORIGINAL PLAT DATED 11/06/09 REVISED 08/18/10 TO EXTEND HORIZONTAL LEG & CHANGE BOTTOM HOLE COORDINATES, ETC.

REFERENCES



I THE UNDERSIGNED, HEREBY CERTIFY THAT THIS PLAT IS CORRECT TO THE BEST OF MY KNOWLEDGE AND BELIEF AND SHOWS ALL THE INFORMATION REQUIRED BY LAW AND THE REGULATIONS ISSUED AND PRESCRIBED BY THE DIVISION OF ENVIRONMENTAL PROTECTION.

P.S. 677
Gregory A. Smith



(+) DENOTES LOCATION OF WELL ON UNITED STATES TOPOGRAPHIC MAPS.
DATE AUGUST 18, 20 10
OPERATORS WELL NO. WV 512865
API WELL NO. 47-059-02183H
STATE COUNTY PERMIT

MINIMUM DEGREE OF ACCURACY 1/2500 FILE NO. 3890P512865R (289-11)
PROVEN SOURCE OF ELEVATION DGPS (SUBMETER MAPPING GRADE) SCALE 1" = 1000'

STATE OF WEST VIRGINIA
DIVISION OF ENVIRONMENTAL PROTECTION
OFFICE OF OIL AND GAS

WELL TYPE: OIL GAS LIQUID INJECTION WASTE DISPOSAL IF "GAS" PRODUCTION STORAGE DEEP SHALLOW

LOCATION: ELEVATION 1,635' WATERSHED GRANT BRANCH OF PIGEON CREEK
DISTRICT MAGNOLIA COUNTY MINGO QUADRANGLE BARNABUS 7.5'
SURFACE OWNER FUND 8 DOMESTIC, LLC ACREAGE 20.54±
ROYALTY OWNER ISLAND CREEK CORPORATION (60,000 AC.±) & PENN VIRGINIA OIL & GAS (38,763.36 AC.±)
PROPOSED WORK: DRILL CONVERT DRILL DEEPER REDRILL FRACTURE OR STIMULATE PLUG OFF OLD
FORMATION PERFORATE NEW FORMATION PLUG AND ABANDON CLEAN OUT AND REPLUG OTHER
PHYSICAL CHANGE IN WELL (SPECIFY) _____ TARGET FORMATION LOWER HURON
ESTIMATED DEPTH 5,170' (TOTAL VERTICAL DEPTH)

WELL OPERATOR EQT PRODUCTION COMPANY DESIGNATED AGENT REX C. RAY
ADDRESS 1710 PENNSYLVANIA AVENUE ADDRESS 1710 PENNSYLVANIA AVENUE
CHARLESTON, WV 25302 CHARLESTON, WV 25302

11/16/2012