

W.W. McDONALD LAND CO. LEASE

1,445.26 AC. ±

WELL NO. WV 513565

LATITUDE 37° 42' 30"

WE NO. WV 513565
STATE PLANE COORDINATES
SOUTH ZONE (NAD'27)

BOTTOM HOLE
WE NO. WV 513565
STATE PLANE COORDINATES
SOUTH ZONE (NAD'27)

N. 248,128
E. 1,732,693

N. 242,305
E. 1,736,578

LAT=(N) 37.67778
LONG=(W) 81.92362

LAT=(N) 37.66189
LONG=(W) 81.91000

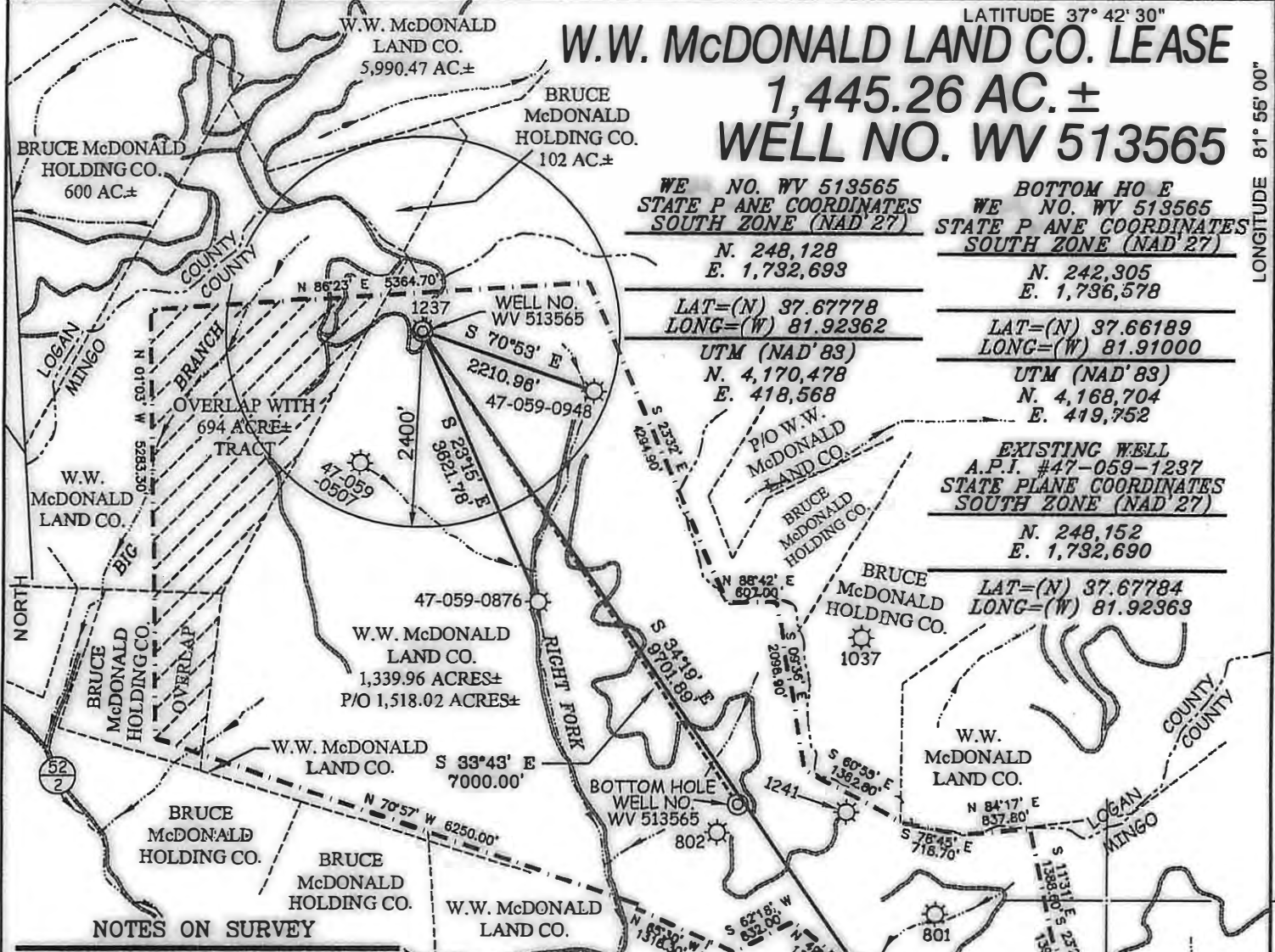
UTM (NAD'83)
N. 4,170,478
E. 418,568

UTM (NAD'83)
N. 4,168,704
E. 419,752

EXISTING WELL
A.P.I. #47-059-1237
STATE PLANE COORDINATES
SOUTH ZONE (NAD'27)

N. 248,152
E. 1,732,690

LAT=(N) 37.67784
LONG=(W) 81.92363

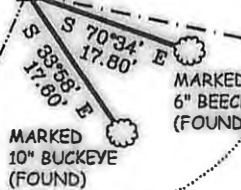


NOTES ON SURVEY

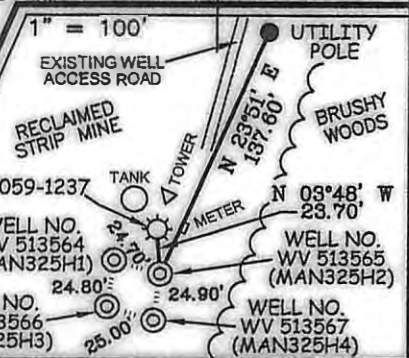
1. TIES TO WELLS AND CORNERS ARE BASED ON GRID NORTH FOR THE WV STATE PLANE COORDINATE SYSTEM SOUTH ZONE NAD '27.
2. TIES TO REFERENCES ARE BASED ON MAGNETIC NORTH 10/14/10.
3. LEASE BOUNDARY SHOWN HEREON TAKEN FROM A PLAT DATED MAY 13, 1997 AS PREPARED BY SLS, INC. FOR A.P.I. NO. 47-059-01237.
4. SURFACE OWNER AND ADJOINER INFORMATION TAKEN FROM THE ASSESSOR AND COUNTY CLERK RECORDS OF MINGO COUNTY IN JULY, 2010.
5. WELL LAT./LONG. (NAD'27) ESTABLISHED BY DGPS(SUBMETER MAPPING GRADE).

SCALE: 1"=20'

POINT IN CREEK FOR REBAR GONE FROM SLS SURVEY FOR CNG (1991)

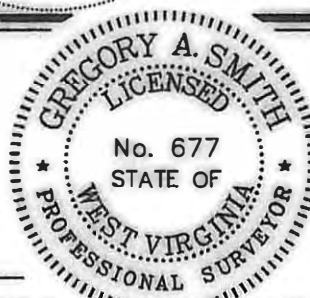


REFERENCES



THIS PLAT IS CORRECT TO THE BEST OF MY KNOWLEDGE AND BELIEF AND SHOWS ALL THE INFORMATION REQUIRED BY LAW AND THE REGULATIONS ISSUED AND PRESCRIBED BY THE DIVISION OF ENVIRONMENTAL PROTECTION.

P.S. 677 *Gregory A. Smith*



(+) DENOTES LOCATION OF WELL ON UNITED STATES TOPOGRAPHIC MAPS.
DATE OCTOBER 28, 20 10
OPERATORS WELL NO. WV 513565
API WELL NO. 47-059-02192H
STATE COUNTY PERMIT

CANCELLED

STATE OF WEST VIRGINIA
DIVISION OF ENVIRONMENTAL PROTECTION
OFFICE OF OIL AND GAS

MINIMUM DEGREE OF ACCURACY 1/2500 FILE NO. 3646P513565 (335-03)
PROVEN SOURCE OF ELEVATION DGPS (SUBMETER MAPPING GRADE) SCALE 1"=2000'

WELL TYPE: OIL GAS LIQUID INJECTION WASTE DISPOSAL IF "GAS" PRODUCTION STORAGE DEEP SHALLOW

LOCATION: ELEVATION 2,349' WATERSHED RIGHT FORK OF BROWNING FORK OF HORSEPEN CREEK
DISTRICT STAFFORD COUNTY MINGO QUADRANGLE MAN 7.5'

SURFACE OWNER W.W. McDONALD LAND COMPANY ET AL ACREAGE 1,339.96±
ROYALTY OWNER W.W. McDONALD LAND COMPANY LEASE ACREAGE 1,445.26±

PROPOSED WORK: LEASE NO. 300558
DRILL CONVERT DRILL DEEPER REDRILL FRACTURE OR STIMULATE PLUG OFF OLD FORMATION
PERFORATE NEW FORMATION PLUG AND ABANDON CLEAN OUT AND REPLUG OTHER

PHYSICAL CHANGE IN WELL (SPECIFY) _____ TARGET FORMATION LOWER HURON
ESTIMATED DEPTH 5,970' (TOTAL VERTICAL DEPTH)

WELL OPERATOR EQT PRODUCTION COMPANY DESIGNATED AGENT REX C. RAY
ADDRESS 1710 PENNSYLVANIA AVENUE CHARLESTON, WV 25302 ADDRESS 1710 PENNSYLVANIA AVENUE CHARLESTON, WV 25302