

**BOTTOM HOLE**  
WELL NO. WV 513264  
STATE PLANE COORDINATES  
SOUTH ZONE (NAD 27)

N. 246,679  
E. 1,680,091

LAT=(N) 37.67222  
LONG=(W) 82.10530

UTM (NAD'83)  
N. 4,170,034  
E. 402,539

# ISLAND CREEK COAL CO. LEASE

## 60,000 ACRES ±

### WELL NO. WV 513264

WELL NO. WV 513264  
STATE PLANE COORDINATES  
SOUTH ZONE (NAD 27)

N. 250,226  
E. 1,677,854

LAT=(N) 37.68188  
LONG=(W) 82.11318

UTM (NAD'83)  
N. 4,171,115  
E. 401,857

- A- PAUL VARNEY ET AL. (10 AC.±)
- B- WOODIE H. DEAN (18 AC.±)
- C- WOODIE H. DEAN ET UX (5 AC.±)
- D- WOODIE H. DEAN ET UX (2.90 AC.±)
- E- WOODIE H. DEAN (5.97 AC.±)
- F- EDDIE A. VARNEY (22.25 AC.±)
- G- DOLLY A. WHITE (17.71 AC.±)
- H- REBECCA C. MEADE (38.16 AC.±)

47-059-0871-P

FUND 8 DOMESTIC, LLC

ROCKHOUSE

HEARTWOOD FORESTLAND FUND  
22468 ACRES±

ARKLAND CO ANY  
3.57 ACRES±

P/O THE MINGO COUNTY REDEVELOPMENT AUTHORITY  
624.71 ACRES±

**LANDING POINT**  
WELL NO. WV 513264  
STATE PLANE COORDINATES  
SOUTH ZONE (NAD 27)

N. 249,108  
E. 1,677,572

LAT=(N) 37.67880  
LONG=(W) 82.11410

UTM (NAD'83)  
N. 4,170,774  
E. 401,771

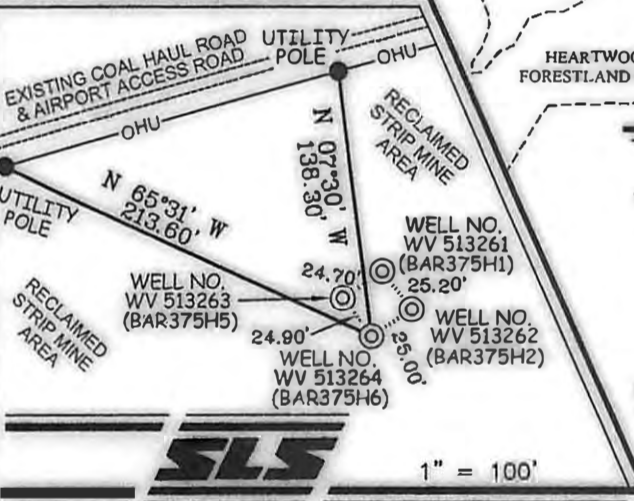
WELL NO. WV 513264

S 14°09' W  
1152.53'

THE MINGO COUNTY REDEVELOPMENT AUTHORITY  
624.71 ACRES±

WHITE FLAME ENERGY INC.  
23.39 ACRES±

### REFERENCES



### NOTES ON SURVEY

1. TIES TO WELLS AND CORNERS ARE BASED ON GRID NORTH FOR THE WV STATE PLANE COORDINATE SYSTEM SOUTH ZONE NAD '27.
2. TIES TO REFERENCES ARE BASED ON MAGNETIC NORTH 05/13/10.
3. LEASE BOUNDARY DOES NOT APPEAR WITHIN THE SCOPE OF THIS PLAT.
4. SURFACE OWNER AND ADJOINER INFORMATION TAKEN FROM THE ASSESSOR AND COUNTY CLERK RECORDS OF MINGO COUNTY IN NOVEMBER, 2010.
5. WELL LAT./LONG. ESTABLISHED BY DGPS(SUBMETER MAPPING GRADE).

I THE UNDERSIGNED, HEREBY CERTIFY THAT THIS PLAT IS CORRECT TO THE BEST OF MY KNOWLEDGE AND BELIEF AND SHOWS ALL THE INFORMATION REQUIRED BY LAW AND THE REGULATIONS ISSUED AND PRESCRIBED BY THE DIVISION OF ENVIRONMENTAL PROTECTION.

P.S. 677


*Gregory A. Smith*



(+) DENOTES LOCATION OF WELL ON UNITED STATES TOPOGRAPHIC MAPS.  
 DATE DECEMBER 06, 20 10  
 OPERATORS WELL NO. WV 513264  
 API WELL NO. 47-059-02211H  
 COUNTY CROWN PERMIT CANCELLED

MINIMUM DEGREE OF ACCURACY 1/2500 FILE NO. 3890P513264 (299-54)  
 PROVEN SOURCE OF ELEVATION DGPS (SUBMETER MAPPING GRADE) SCALE 1" = 2,000'

STATE OF WEST VIRGINIA  
 DIVISION OF ENVIRONMENTAL PROTECTION  
 OFFICE OF OIL AND GAS



WELL TYPE: OIL  GAS  LIQUID INJECTION  WASTE DISPOSAL  IF "GAS" PRODUCTION  STORAGE  DEEP  SHALLOW

LOCATION: ELEVATION 1,864' WATERSHED OLDFIELD BRANCH OF PIGEON CREEK  
 DISTRICT MAGNOLIA COUNTY MINGO QUADRANGLE BARNABUS 7.5'

SURFACE OWNER THE MINGO COUNTY REDEVELOPMENT AUTHORITY ACREAGE 624.71±  
 ROYALTY OWNER ISLAND CREEK CORPORATION LEASE ACREAGE 60,000±  
 PROPOSED WORK: LEASE NO. 080662

DRILL  CONVERT  DRILL DEEPER  REDRILL  FRACTURE OR STIMULATE  PLUG OFF OLD FORMATION   
 PERFORATE NEW FORMATION  PLUG AND ABANDON  CLEAN OUT AND REPLUG  OTHER

PHYSICAL CHANGE IN WELL (SPECIFY) \_\_\_\_\_ TARGET FORMATION LOWER HURON  
 ESTIMATED DEPTH 5,280' (TOTAL VERTICAL DEPTH)

WELL OPERATOR EQT PRODUCTION COMPANY DESIGNATED AGENT REX C. RAY  
 ADDRESS 1710 PENNSYLVANIA AVENUE CHARLESTON, WV 25302 ADDRESS 1710 PENNSYLVANIA AVENUE CHARLESTON, WV 25302

07/26/2013