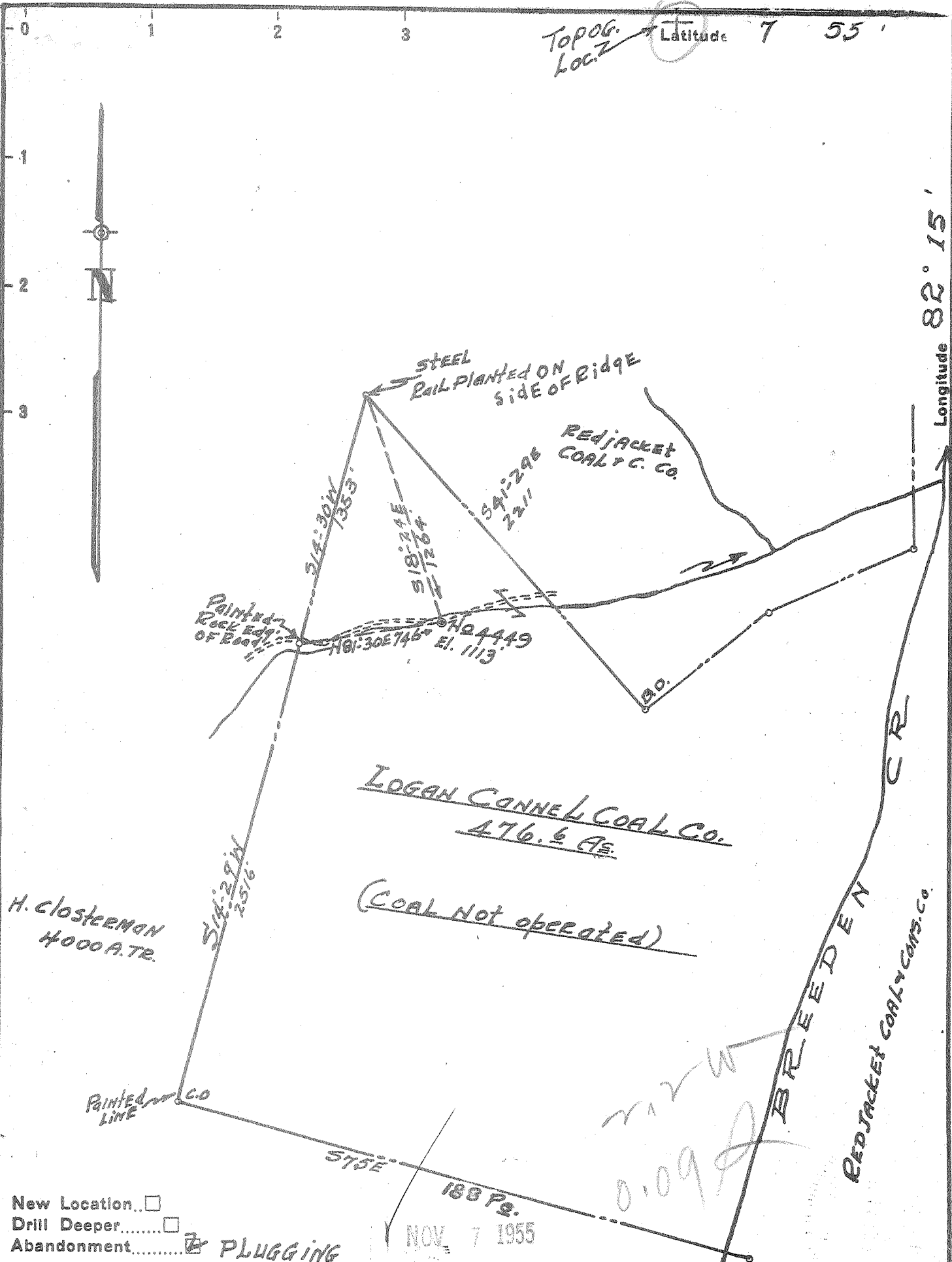


TOPOG. Loc. 7 Latitude 7 55' Longitude 82° 15'



New Location   
 Drill Deeper   
 Abandonment  PLUGGING

Company E.C. WARE  
 Address BEAUTY, Ky.  
 Farm LOGAN CANNEL COAL CO.  
 Tract Breedon Acres 476.6 Lease No. \_\_\_\_\_  
 Well (Farm) No. 4449 Serial No. \_\_\_\_\_  
 Elevation (Spirit Level) 1113'  
 Quadrangle NAUGATUCK, W. VA. - Ky.  
 County Mingo District HARVEY  
 Engineer R. M. Reed  
 Engineer's Registration No. 1826  
 File No. 1-A Drawing No. 215-L  
 Date 10-19-1955 Scale 1" = 660'

WEST VA.  
 STATE OF ~~KENTUCKY~~  
 DEPARTMENT OF MINES  
 OIL AND GAS DIVISION  
~~LEXINGTON~~  
 CHARLESTON  
**WELL LOCATION MAP**  
 FILE NO. MIN-32-A

+ Denotes location of well on United States Topographic Maps, scale 1 to 62,500, latitude and longitude lines being represented by border lines as shown.  
 - Denotes one inch spaces on border line of original tracing.

"IMPERIAL" TRACING CLOTH



STATE OF WEST VIRGINIA  
DEPARTMENT OF MINES  
OIL AND GAS DIVISION

200

Permit No. 32-A

WELL RECORD

Oil or Gas Well Oil  
(KIND)

Company The Preston Oil Co.  
Address Charleston, W. Va.  
Farm Logan Cannel Coal Acres 4008  
Location (waters) \_\_\_\_\_  
Well No. 4449 Elev. 1113  
District Harvey County Mingo  
The surface of tract is owned in fee by Logan Cannel Coal  
Address Huntington, W. Va.  
Mineral rights are owned by Logan Cannel Coal  
522 9th St. Address Huntington, W. Va.  
Drilling commenced March 2, 1927  
Drilling completed March 30, 1927  
Date Shot From \_\_\_\_\_ To \_\_\_\_\_  
With \_\_\_\_\_  
Open Flow /10ths Water in \_\_\_\_\_ Inch  
/10ths Merc. in \_\_\_\_\_ Inch  
Volume \_\_\_\_\_ Cu. Ft.  
Rock Pressure \_\_\_\_\_ lbs. \_\_\_\_\_ hrs.  
Oil \_\_\_\_\_ bbls., 1st 24 hrs.  
Fresh water \_\_\_\_\_ feet \_\_\_\_\_ feet  
Salt water \_\_\_\_\_ feet \_\_\_\_\_ feet

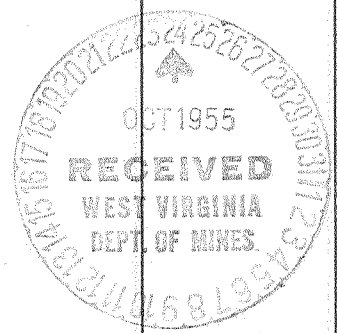
Casing and Tubing	Used in Drilling	Left in Well	Packers
Size			
16			Kind of Packer
13			
10	25'	25'	Size of
8 1/4			
6 5/8	1236'	1236'	Depth set
5 3/16			
3			Perf. top
2			Perf. bottom
Liners Used			Perf. top
			Perf. bottom

CASING CEMENTED \_\_\_\_\_ SIZE \_\_\_\_\_ No. Ft. \_\_\_\_\_ Dat. \_\_\_\_\_  
COAL WAS ENCOUNTERED AT 150 FEET \_\_\_\_\_ INCHES  
390 FEET \_\_\_\_\_ INCHES \_\_\_\_\_ FEET \_\_\_\_\_ INCHES  
\_\_\_\_\_ FEET \_\_\_\_\_ INCHES \_\_\_\_\_ FEET \_\_\_\_\_ INCHES

Formation	Color	Hard or Soft	Top	Bottom	Oil, Gas or Water	Depth Found	Remarks
Coal			150	153			
Coal			390	393			
Big Dunkard Sand			615	660	Gas	630	
Salt Sand			800	1050			
Maxon Sand			1300	1323	Oil	1303	
Slate & Lime			1323	1328' T.D.			

Note:  
Owned by Old Colony Oil & Gas Co.  
Purchased by United Fuel Gas Co.  
Sept. 2, 1930.

9



JAN 23 1956