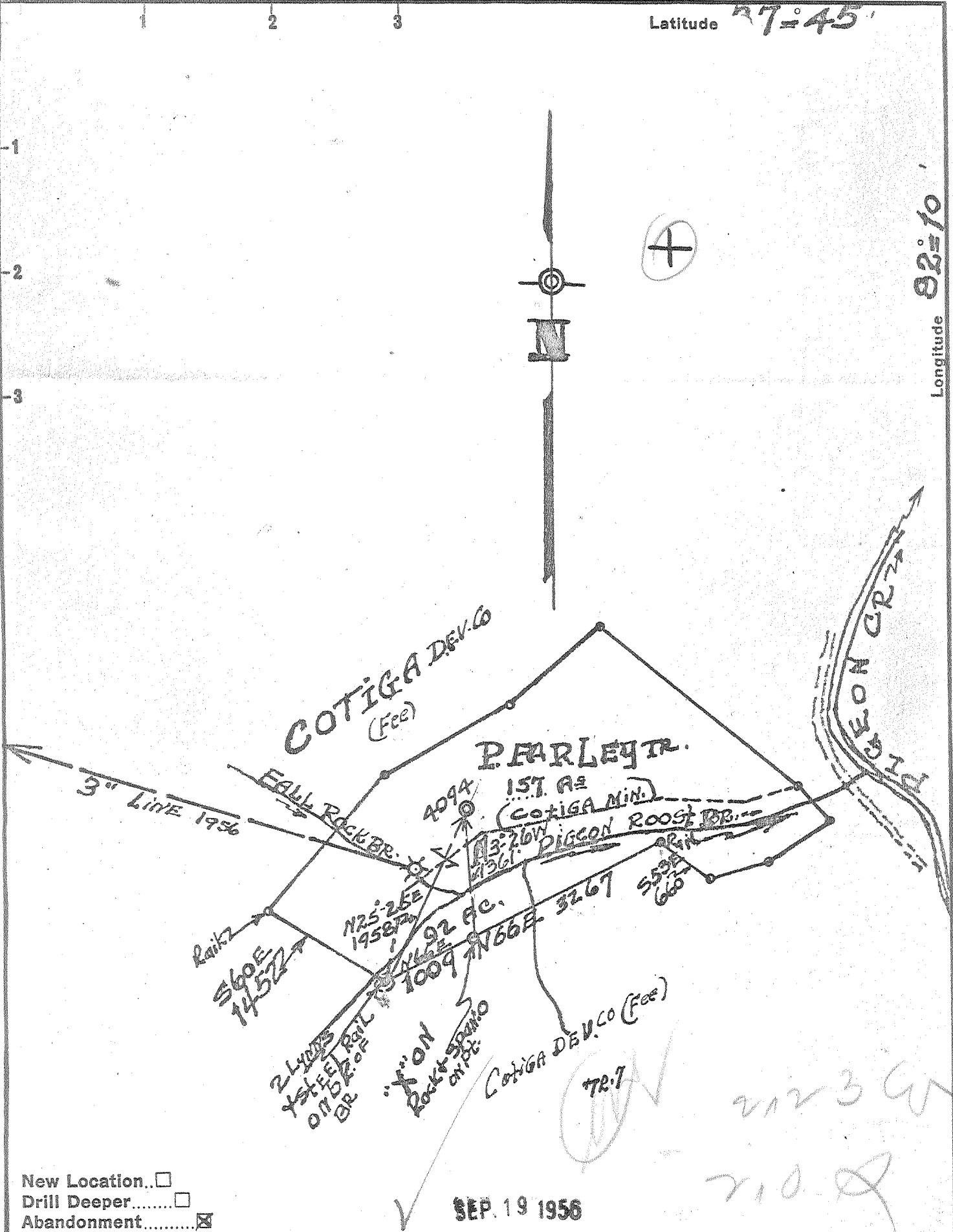


Latitude 37° 45'

Longitude 82° 10'



New Location...
 Drill Deeper.....
 Abandonment.....

SEP. 19 1956

Company TEDIK GAS CO.
 Address 123 S. BROAD ST. PHILADELPHIA 9, PA.
 Farm FARLEY TR. (COTIGA MIN.)
 Tract 1 Acres 157 Lease No. _____
 Well (Farm) No. 4094 Serial No. _____
 Elevation (Spirit Level) 1165
 Quadrangle MATEWAN, W. VA. - KY. VA.
 County MINGO District LEE
 Engineer R. M. Reed
 Engineer's Registration No. 1826
 File No. _____ Drawing No. _____
 Date 8-28-1956 Scale 1" = 1320'

STATE OF WEST VIRGINIA
 DEPARTMENT OF MINES
 OIL AND GAS DIVISION
 CHARLESTON

WELL LOCATION MAP
 FILE NO. MIN-41-B

+ Denotes location of well on United States Topographic Maps, scale 1 to 62,500, latitude and longitude lines being represented by border lines as shown.

o Denotes one inch spaces on border line of map tracing.

COTIGA DEV. CO. - (FARLEY TRUSTEE) No. 409A - TEDIK GAS CO. - MIN-41-A