

LATITUDE

394230

80 07 30

LONGITUDE

LONGITUDE

OGIS
75' loc

7.5 OGIS topo location

7.5' loc	<u>1.78S</u>	15' loc	<u>4.66S</u>
	<u>1.67W</u>	(calc.)	<u>3.89W</u>

Company _____

Farm _____

LOCATION MAP

Quad Blacksville 415'nc

County _____

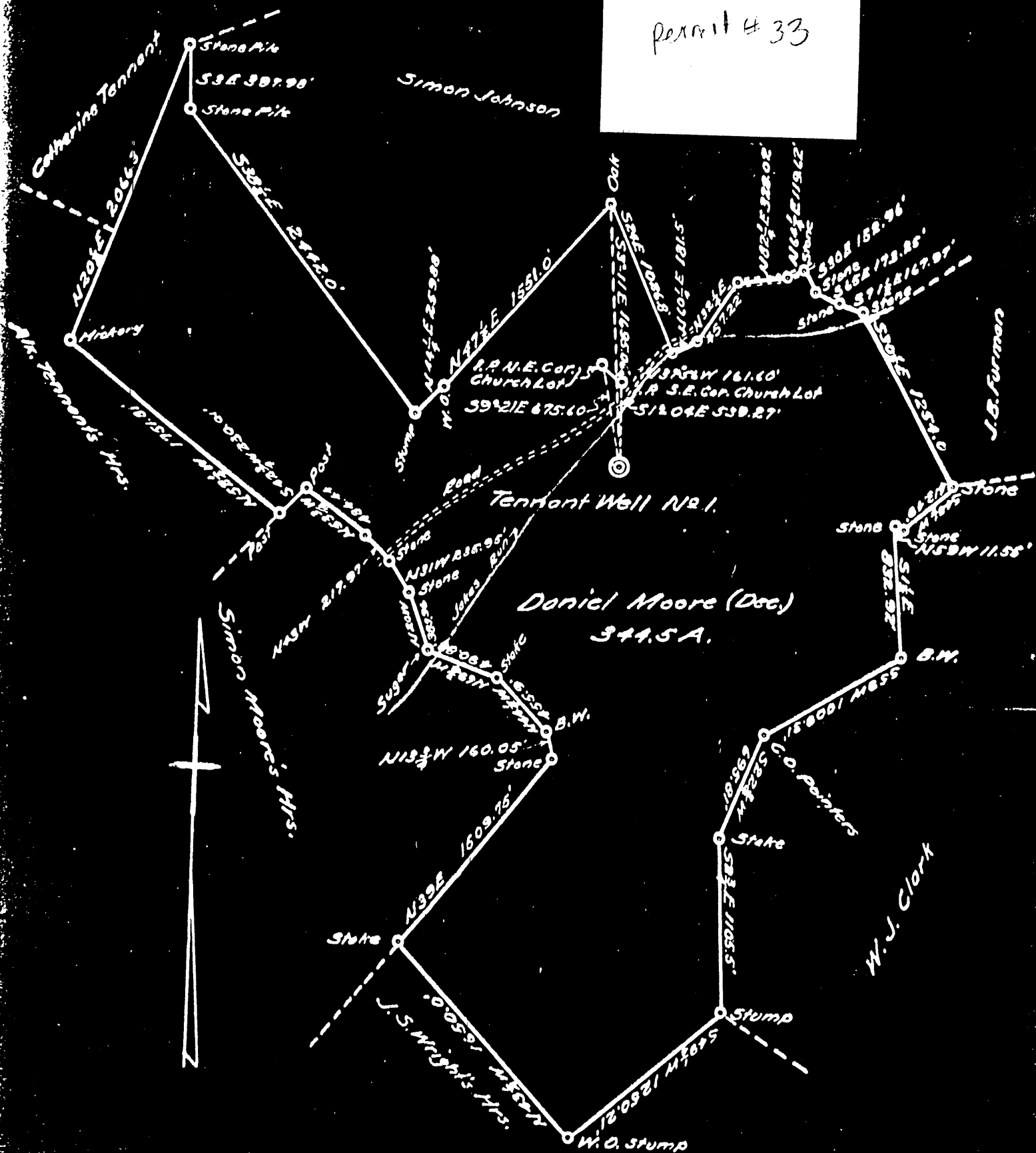
District Clay

WELL LOCATION MAP

File No. Mon 33

Plat of the Proposed Location of Tennant Well No. 1 of the Moore-Tex Oil Co. of Morgantown, W. Va. on the Daniel Moore farm, consisting of 344.5 Acres located in Clay District Monongalia County.

#1
Permit # 33



Engineer's Certificate

I, the undersigned, hereby certify that this Map is correct and shows all the information to the best of my knowledge and belief, required by the oil and gas section of the Mining Laws of West Virginia.

Engineer

Acknowledged before me a -----
----- this ----- day of ----- 19____,

Clay District, Monongalia County, W. Va.
By Moore-Tex Oil Co. and Consolidation Oil Co., Morgantown, W. Va.
On 357 acres, surface owned by Amy Tennant, Mooresville, W. Va.,
and mineral rights by above companies and others unknown to
us, and royalty interest by Amy Tennant, Mooresville, W. Va.
Drilled under permit Mon-33, issued June 26, 1930.
No elevation given.
13" conductor, 16'; 10" casing, 502'; 8 1/2", 1179'; 6-5/8", 1711';
2" tubing, 2923'.
Spang anchor packer, 6-5/8 x 2, set at 2750'.
2" tubing perforated at 2910-2915'.
Coal was encountered at 127-132, 394-400, and 470-477'.
Completion reported to Dept. of Mines Dec. 12, 1930.
Well was not shot. 6-5/8" hole. Gas well.

MON 33

	Top.	Bottom.	Thickness.
Soil, yellow, clay	0	14	14
Lime, gray	14	70	56
Bluff Sand, white (water at 75')	70	127	57
Fairview (Waynesburg) Coal, black	127	132	5
Sand-Shells, gray, Lime-Shells	132	394	262
Mapletown (Sewickley) Coal, black	394	400	6
Slate and lime	400	470	70
Pittsburgh Coal, black	470	477	7
Lime, gray	477	507	30
Sand-Shells, gray, Lime-Sand	507	925	418
Big Dunkard Sand, gray	925	1090	165
Sand-Shells, gray, sandy	1090	1173	83
Gas Sand, gray	1173	1185	12
Slate, dark	1185	1224	39
1st Salt Sand, white	1224	1245	21
Slate-Lime, sandy	1245	1290	45
2nd Salt Sand, white, sandy (hole full water at 1300')	1290	1415	125
Slate-Lime, gray	1415	1673	258
Little Lime, gray	1673	1688	15
Pencil Cave, black, soapstone	1688	1695	7
Big Lime, gray	1695	1777	82
Big Injun Sand, gray (little gas at 1788'; little gas at 1822')	1777	1962	185
Slate, gray	1962	2250	288
Sand, gray	2250	2275	25
Slate, gray	2275	2355	80
50-Ft. Sand, white	2355	2390	35
Slate, dark	2405	2440	35
30-Ft. Sand, gray	2440	2500	60
Shells-Slate, gray, sandy (hole full water at 1400'?)	2500	2522	22
Sand-Shells and red rock, dark, sandy	2522	2614	92
Shells-Lime, gray	2614	2625	11
Slate-Shells, gray, sandy	2625	2738	113
4th Sand, gray	2738	2758	20
Slate-Lime, gray	2758	2790	32
5th Sand, gray,	2790	2800	10
Slate-Lime, gray, sandy (little gas at 2873')	2800	2873	73
Gas top of sand	2903	2916	13
Total depth		2923	

GAS

WELL RECORD 61-33

Moore-Tex Oil Company & Consolidation Oil Company **COMPANY**

Record of Well No. -1- on Amy Tennant Farm Acres 357
Mooreville Field Clay District Monongalia County West Virginia State
 Rig Commenced July 6th. 1930 Completed November 2nd. 1930
 Cost Per Foot \$1.85 Contractor M-Tex Oil Drlg. Dept. Address Morgantown, W. Va.
 Drillers Names W. L. Tennant and Allen Berry

CONDUCTOR AND CASING USED IN DRILLING

Conductor	13 inch	10 inch	8 1-4 inch	6 5-8 inch	5 3-16 inch	4 inch	3 inch	2 inch
16'		502'	1179'	1711'				2923'

CONDUCTOR AND CASING LEFT IN WELL

Conductor	13 inch	10 inch	8 3-4 inch	6 5-8 inch	5 3-16 inch	4 inch	3 inch	2 inch
16'			pulled					

Formation	Top	Bottom	Thickness	Formation	Top	Bottom	Thickness
GRAVEL OR QUICK SAND				FORMATION			
FIRST WATER				SQUAW			
BLUFF SAND	70-127			BEREA			
Hole full w. @ 75'				GANTZ			
NATIVE COAL	Fairview			FIFTY FOOT	2355-2390		
WBG. COAL				THIRTY FOOT	2405-2440		
MAPEL COAL	394-399			GORDON STRAY			
PGH. COAL	470-476			GORDON			
MURPHY SAND				FOURTH	2738-2758		
LITTLE DKRD.				FIFTH	2790-2800		
BIG DKRD.	925-1090			Gas 8/10 W. on 1"			
GAS SAND	1173-1185			Sand 2873 - Gas 2875		30/10 W on 1"	
Slate	1185-1224			BAYARD	2903-2916		
FIRST SALT SAND	1224-1245			Gas @ 2914 - 18/10 W on 2"			
SECOND SALT SAND	1290-1415			ELIZABETH			
Hole full w. @ 1300'				TOTAL DEPTH	2923'		
LITTLE LIME	1673-1688						
PENCIL CAVE	1688-1695						
BIG LIME	1695-1777						
BIG INJUN	1777-1962						
Gas @ 1788	12/10 W on 1"						
" @ 1822	16/10 W " 1"						

Gas Test Open When tubed 6/10 W on 2"-Bradenhead 4/10 W on 1" - R.P. 290
 Minute Test 1/3, 2/21, 3/29, 4/36, 5/42, 6/50, 7/57, 8/63, 9/69, 15/97, 30/129, 60/151
 Oil Production 2750'
 Well Tubed with 2923'-2" Tubing Packer Set in 4th. Sand Sand, Top of Packer, 2750' Perforation 2910'
 Well Tubed with Tubing Ft. working bbl. Anchor, Perforation at, Air Hole

SHOT RECORD

Date	Amount	Size of Shell	Top	Bottom	Oil on Shot	Results

REMARKS: