

LATITUDE

393730

75' loc
72' loc
007 S
1.08 W

79 S 730

LONGITUDE

7'5 OGIS topo location

7.5' loc _____

15' loc 2955
(calc.) 330W

Company _____

Farm _____

LOCATION MAP

Quad Mytn. South Mytn. S. Sec.

County _____

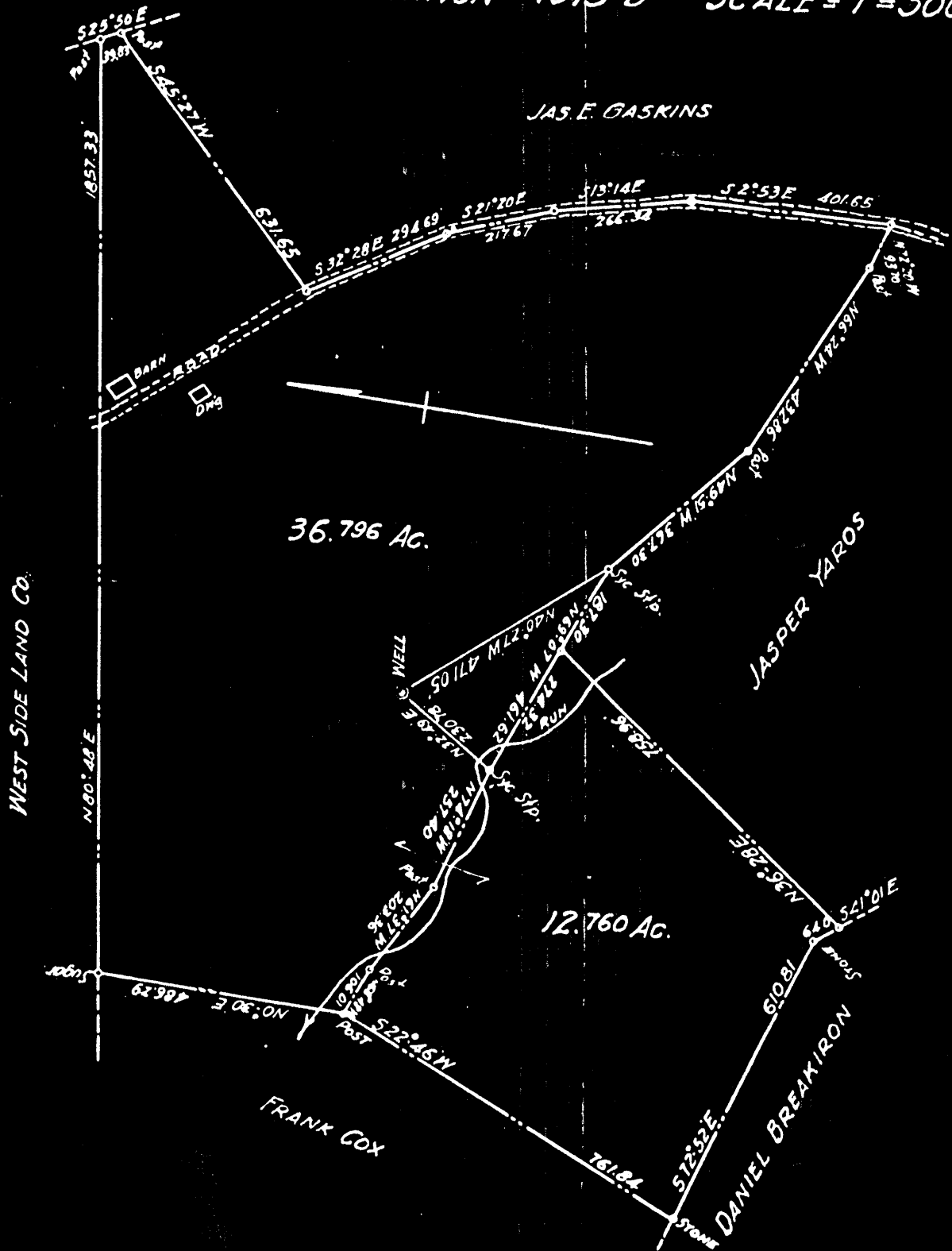
District Grant

WELL LOCATION MAP

File No. MON. 51

PLAT OF THE PROPOSED LOCATION OF WELL-THOS. J. JOHNSON No 1
 OF THE [REDACTED] OF 22 GREEVES ST, KANE, PA.
 ON THE THOS. J. JOHNSON FARM CONSISTING OF 49.556 AC.
 LOCATED IN GRANT DIST, MONONGALIA COUNTY,
 WEST VIRGINIA.

DATE - DEC. 16, 1932 ELEVATION = 1075' B SCALE = 1" = 300'



I, the undersigned, hereby certify that this Map is correct and shows all the information, to the best of my knowledge and belief, required by the Oil and Gas Section of the Mining Laws of West Virginia.

W. M. Cutchon Engineer.

Acknowledged before me a NOTARY PUBLIC this 17th day of December, 1932.
 My Commission expires July 21, 1933.

Wayne Cox

Mon- 51

Grant District, Monongalia County, W. Va.
 By W. Va.-Penna. Counties Gas Co., Kane, Pa.
 On head of a southeastern branch of Dents Run of Monongahela River,
 1.1 mi. S. W. of Morgantown-Westover highway bridge;
 Begun Jan. 18, 1933; completed, Feb. 24, 1933.
 Elevation, 1075' B.

MON-51

Starts about 250' below horizon of Pittsburgh Coal.
 Ccm 340+; Ca 250'; Cpv 238'; Cmc 252'; Cgr 90'; Cpo 445'; Dck 243+.
 Conductor, 15'; 10" casing, 219' (pulled); 8", 875' (pulled);
 6-5/8", 1100' (left in).

Berea gas declined rapidly before test could be made next day.
 Gas test by F. Arthur Johnson, 11:00 a. m. Feb. 24, 1933, as follows:
 3/10 water (strong) in 1 1/4" opening: 30,207 cu. ft. (or more).
 9/10 water in 1" opening: 35,760 cu. ft.

Rock pressure, Feb. 25, 445 lbs.
 Well turned into line without tubing.
 S. P. Weaver, contractor, Mt. Morris, Pa.; Jess Bowlby and Max
 Michael, drillers, Mt. Morris, Pa.
 Well location and sand correlations by David B. Reger.

	Top.	Bottom.
Clay	0	15
Slate and shells	15	120
Red rock	120	125
Slate (little water, 110')	125	170
Shale, red	170	185
Sand, Moundsville (Saltsburg) and Little Dunkard (Buffalo) (oily scum at base)	185	251
Slate and shells	251	340
Coal, Upper Freeport (little gas)	340	342
Slate and shells	342	365
Sand, Burning Springs (Upper Freeport)	365	395
Slate	395	410
Gas Sand, Lower Freeport (limy at top; little water, 510')	410	525
Slate and shells	525	560
Slate, black (gas show)	560	
Slate and shells	560	590
Sand, Second Cow Run, Homewood	590	601
Slate	601	618
Sand, Salt, Upper Connoquenessing (little gas and fresh water, 633-635'; fresh water, 675-706'; filled up 250' in hole and could not be bailed down)	618	704
Slate	704	720
Sand, Salt, Lower Connoquenessing	720	808
Slate	808	813
Sand, Salt, Sharon	813	828
Slate and shells	828	852
Red rock	852	857
Slate and shells	857	885
Sand	885	955
Red rock and shells	955	1035
Lime	1035	1043
Slate	1043	1055
Little Lime, Glenray	1055	1067
Pencil Cave, Lillydale Shale	1067	1080

(OVER)

THOMAS J. JOHNSON NO. 1 WELL (Continued).

	Top.	Bottom.
Big Lime	1080	- 1170
Sand, Big Injun (little gas, 1235-37')	1170	- 1283
Slate	1283	- 1300
Sand, Squaw	1300	- 1305
Slate	1305	- 1340
Sand, Weir (gritty lime)	1340	- 1445
Slate and shells	1445	- 1580
Sand, Berea (gas, 1810-1812'; estimated 100,000 cu. ft.)	1580	- 1615
Slate and shells	1615	- 1674
Sand, Santz	1674	- 1695 (1695)
Slate	1695	- 1708
Sand (top of 50-Ft.)	1708	- 1748
Slate	1748	- 1754
Sand (bottom of 50-Ft.)	1754	- 1775
Slate and shells, red	1775	- 1835
Sand, 30-Ft.	1835	- 1840
Slate, to bottom	1840	- 1858