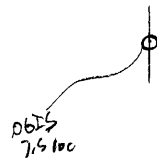


LATITUDE

39°42'30"

01/22/88

LONGITUDE



7.5 OGIS topo location

7.5' loc	<u>1.08 S</u>	15' loc	<u>3.96 S</u>
	<u>0.59 W</u>	(calc.)	<u>2.81 W</u>

Company \_\_\_\_\_

Farm \_\_\_\_\_

Quad Osage<sup>7.5'</sup> Blount to NE

County \_\_\_\_\_

District Cass

WELL LOCATION MAP

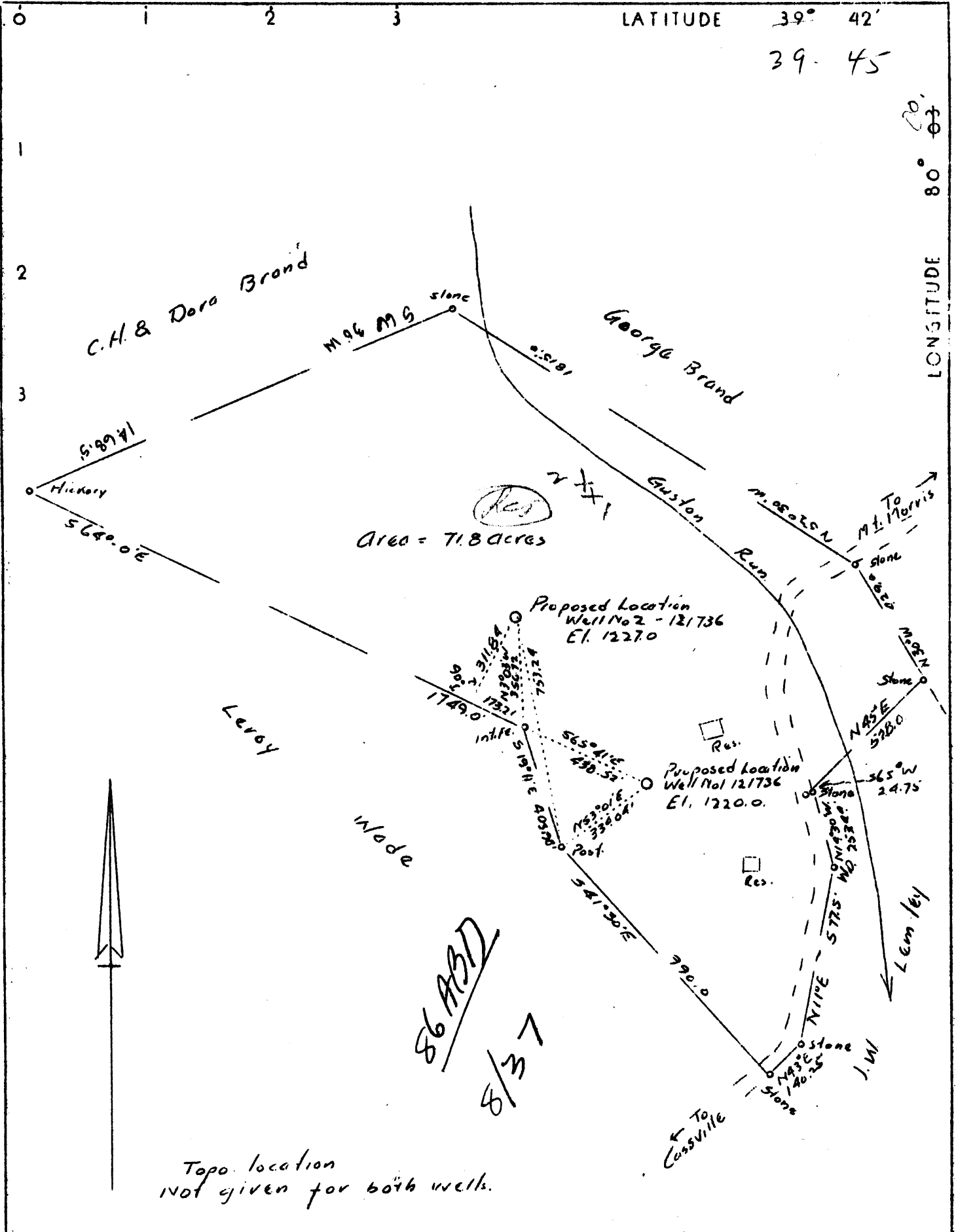
File No. 061-86

no record

620

?

(068)



Company L. J. Houze Convex Glass Co.  
 Address Point Marion, Pa.  
 Farm C. H. & Dora Brand  
 Tract 1 acres 71.8 Lease No. 9536  
 Well (Farm) No. 1 Serial No. 1-121736  
 Elevation (Spirit Level) 1220.0 1227.0  
 Quadrangle Blacksville (N E)  
 County Monongalia District Cass  
 Engineer James M. Cabbage  
 Engineer's Registration No. 3185 Penna.  
 File No. \_\_\_\_\_ Drawing No. 148  
 Date 12-22-36 Scale 1" 400'

STATE OF WEST VIRGINIA  
 Department of Mines  
 OIL AND GAS DIVISION  
 Charleston

WELL LOCATION MAP  
 File No. MON-86-87

+ Denotes location of well on U. S. Topographic Maps, scale 1 to 62,500 latitude and longitude lines being represented by border lines as shown.  
 - Denotes one inch spaces on border line of original tracing.

# DRILLER'S RECORD

Previously Requested, but NOT  
AVAILABLE

DATE: 3-2-92

061  
COUNTY

86  
PERMIT