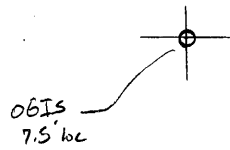


LATITUDE 39 42 30

80° 22' 30"

LONGITUDE



7.5 OGIS topo location

| | | | |
|----------|---------------|---------|---------------|
| 7.5' loc | <u>2.38 S</u> | 15' loc | <u>5.26 S</u> |
| | <u>1.14 W</u> | (calc.) | <u>3.36 W</u> |

Company _____

Form _____

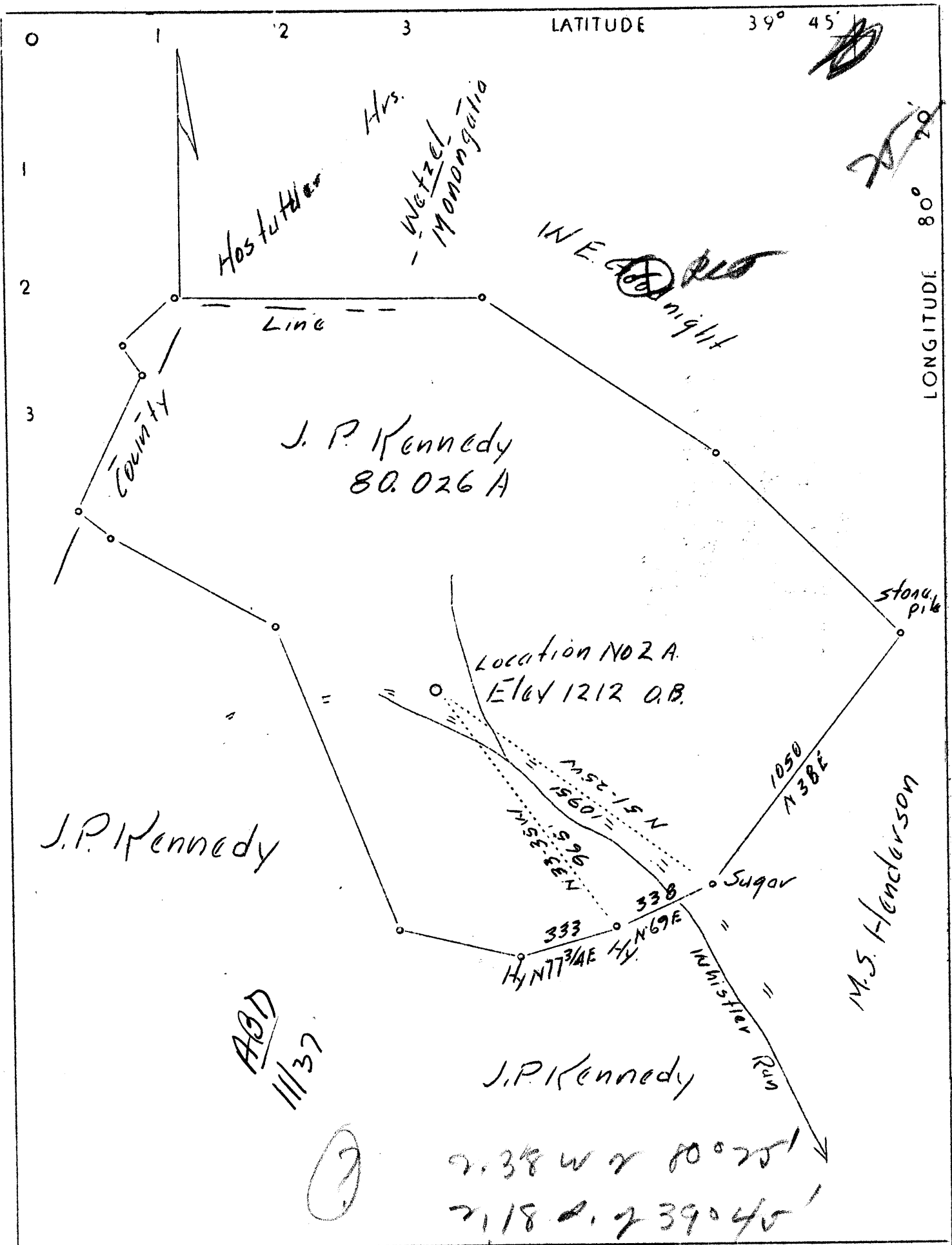
Quad Hundred 7.5' Manington NC

County _____

District Battelle

WELL LOCATION MAP

File No. 061-95



| | |
|-----------------------------|------------------------------|
| Company | Maxton Oil & Gas |
| Address | Fairmont, W.Va. |
| Farm | J.P. Kennedy |
| Tract | 3 Acres 80.026 Leaso No. |
| Well (Farm) No. | 2-A Serial No. |
| Elevation (Spirit Level) | 1212 O.B. |
| Quadrangle | Mannington <i>HW</i> |
| County | Monongalia District Battelle |
| Engineer | David Weed |
| Engineer's Registration No. | 233-16-5767 |
| Date | July 28, 1937 Scale 1"-400' |
| File No. | Drawing No. |

STATE OF WEST VIRGINIA
 Department of Mines
 OIL AND GAS DIVISION
 CHARLESTON

WELL LOCATION MAP
 File No. MON-25

Denotes location of well on United States Topographic Maps, scale 1 to 62,500, latitude and longitude lines being represented by border lines as shown.

Denotes one inch spaces on border line of original tracing.

J. P. Kennedy Well, No. 2A.

Location, Battelle Dist., Monongalia County.

Lease Owner, Maxton Oil and Gas Co.

Contractor, D. W. Null and Son.

Commenced, Sept. 6, 1937.

Completed Oct. 21, 1937.

Dry Hole.

| | | |
|---------------|---------|------------------|
| Clay | 0-20 | Light-soft |
| Slate | 20-45 | Dark-soft |
| Lime | 45-80 | White-hard. |
| Sand | 80-140 | White-hard |
| Water at 100' | | |
| Blue Mud | 140-200 | Blue-soft |
| Sand | 200-225 | White-hard |
| Slate | 225-240 | Dark-soft |
| Red Rock | 240-245 | Red-soft |
| Lime | 245-270 | White-hard |
| Slate | 270-300 | Dark-soft |
| Gritty Lime | 300-320 | White-hard |
| Slate | 320-325 | Dark-soft |
| Lime | 325-336 | White-hard |
| Red Rock | 336-345 | Red-soft |
| Slate | 345-385 | Dark-soft |
| Lime | 385-425 | White-hard |
| Gritty Lime | 425-440 | " " |
| Gray Mud | 440-450 | Gray-soft |
| Lime | 450-460 | White-hard |
| Red Rock | 460-470 | Red-soft |
| Slate | 470-490 | Dark-soft |
| Red Rock | 490-500 | Red-soft |
| Slate | 500-525 | Dark-soft |
| Coal | 525-528 | Black-soft |
| Lime | 528-540 | White-hard |
| Slate | 540-600 | Dark-soft |
| Lime | 600-620 | White-hard |
| Slate | 620-632 | Dark-soft |
| Lime | 632-653 | White-hard |
| Slate | 653-657 | Dark-soft |
| Sand | 657-675 | White-hard-sharp |
| Fairview Coal | 675-680 | Black-soft |
| Sand | 680-710 | White-hard |
| Slate | 710-720 | Dark-soft |
| Sand | 720-762 | White-hard |
| Slate | 762-765 | Dark-soft |
| Lime | 765-785 | White-hard |
| Pink Rock | 785-789 | Pink-soft |
| Lime | 789-835 | White-hard |
| Sand | 835-855 | " " |

Page 2-Kennedy No. 2A.

| | | |
|----------------|-----------|--------------------|
| Slate | 855-860 | Dark-soft |
| Lime | 860-930 | White-hard |
| Mapletown Coal | 930-933 | Black-soft |
| Lime | 933-960 | White-hard |
| Slate | 960-970 | Dark-soft |
| Lime | 970-1020 | White-hard |
| Shale | 1020-1040 | Dark-soft |
| Pittsburg Coal | 1040-1047 | Black-soft. 8.Line |
| Lime | 1047-1055 | White Hard |
| Gray Mud | 1055-1060 | Gray-soft |
| Lime | 1060-1065 | White-hard |
| Slate | 1065-1068 | Dark-soft |
| Lime | 1068-1075 | White-hard |
| Slate | 1075-1095 | Light-soft |
| Red Rock | 1095-1110 | Red-soft |
| Lime | 1110-1140 | Light-hard |
| Slate | 1140-1150 | Dark-soft |
| Lime | 1150-1168 | White-hard |
| Red Rock | 1168-1180 | Red-soft |
| Lime | 1180-1190 | White-hard |
| Red Rock | 1190-1200 | Red Soft |
| Lime | 1200-1210 | White-hard |
| Red Rock | 1210-1230 | Red-soft |
| Lime | 1230-1250 | White-hard |
| Red Rock | 1250-1260 | Red-soft |
| Gray Mud | 1260-1265 | Gray-soft |
| Lime | 1265-1290 | White-hard |
| Red Rock | 1290-1340 | Red-soft |
| Gray Mud | 1340-1360 | Gray-soft |
| Gray Lime | 1360-1380 | White-hard |
| Slate | 1380-1405 | Dark-soft |
| Little Dunkard | 1405-1425 | White-hard |
| Red Rock | 1425-1430 | Red-soft |
| Lime | 1430-1460 | White-hard |
| Shale | 1460-1465 | Dark-soft |
| Lime | 1465-1470 | Dark-hard |
| Shale | 1470-1500 | Dark-soft |
| Red Rock | 1500-1505 | Red-soft |
| Lime | 1505-1515 | White-hard |
| Big Dunkard | 1515-1600 | " " |
| Slate | 1600-1625 | Dark-soft |
| Lime | 1625-1640 | White-hard |
| Slate | 1640-1660 | Black-soft |
| Lime | 1660-1670 | White-hard |
| Gas Sand | 1670-1805 | " " |
| Slate | 1805-1860 | Dark-soft |
| 2nd Salt Sand | 1860-1916 | White-hard |
| Slate | 1916-1985 | Black-soft |
| 3rd Salt Sand | 1985-2045 | White-hard |
| Slate | 2045-2068 | Dark-soft |
| Sand | 2068-2078 | White-hard |
| Slate | 2078-2095 | Light-soft |
| Red Rock | 2095-2150 | Red-soft |
| Lime | 2150-2170 | White-hard |
| Slate | 2170-2225 | Dark-soft |

Page 3--Kennedy No. 2A.

| | | |
|---------------------------|-----------------------|------------|
| Little Lime | 2225-2235 | White-hard |
| Pencil Cave | 2235-2240 | Dark-soft |
| Big Lime | 2240-2310 | White-hard |
| Big Injun | 2310-2513 | " " |
| | Show of gas | 2390 |
| Slate | 2513-2580 | Light-soft |
| Gritty Lime | 2580-2695 | Gray-hard |
| Slate | 2695-2860 | Light-soft |
| Fifty Foot (shells) | 2860-2905 | White-hard |
| Slate | 2905-2930 | Black-soft |
| Lime | 2930-2945 | White-hard |
| Slate | 2945-2970 | Black-soft |
| Fifty Foot Sand | 2970-3058 | White-hard |
| | Broken sand. Reduced | |
| | hole at 3050. S.Line. | |
| Slate | 3058-3064 | White-soft |
| Lime | 3064-3085 | White-hard |
| Thirty Foot Sand | 3085-3105 | " " |
| Slate | 3105-3110 | White-soft |
| Shell is xxxxx | 3110-3132 | White-hard |
| Gordon Sand Stray | 3132-3148 | " " |
| Shell | 3148-3180 | " " |
| Red Rock | 3180-3185 | Red-soft |
| Gordon Sand | 3185-3225 | White-hard |
| Slate | 3225-3235 | Light-soft |
| Shell | 3235-3250 | Light-hard |
| Fourth Sand | 3250-3270 | White-hard |
| Slate and Shells | 3270-3290 | " " |
| Fifth Sand | 3290-3310 | " " |
| Slate | 3310-3320 | White-soft |

Casing:

| | |
|--------|-------------|
| 10" | 159 1/3 ft. |
| 8 1/2" | 1518 1/4 " |
| 6 5/8" | 2268 " |

