

Latitude 39° 40'

Longitude 80° 15'

Levi Tennant

J. J. Moore

Eugenus Moore
82 A

G. T. Moore

Enos Moore
Abd. Aug. 48 - 1908
5-1-35

New Location X
Drill Deeper
Abandonment

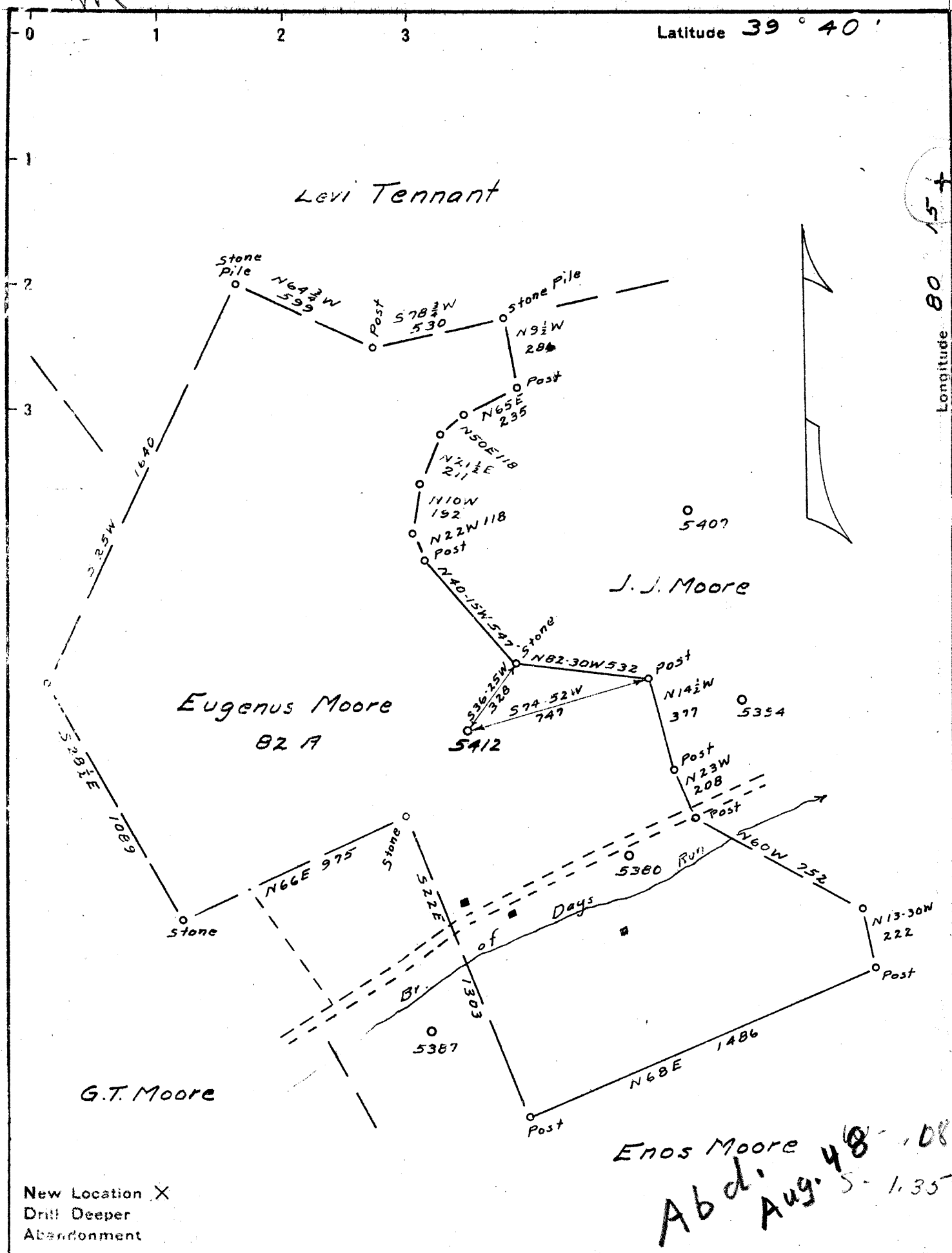
Company Philadelphia Oil Co.
 Address 608 Union Bk. Clarksburg, W. Va.
 Farm Eugenus Moore
 Tract _____ Acres 100.7 Lease No. 20173
 Well (Farm) No. 2 Serial No. 5412
 Elevation (Spirit Level) 1311.0
 Quadrangle Mannington N.E.C. 4th
 County Monongalia District Clay
 Engineer James B. Jeffries
 Engineer's Registration No. _____
 File No. _____ Drawing No. _____
 Date 11-20-39 Scale 1"=500'

STATE OF WEST VIRGINIA
DEPARTMENT OF MINES
OIL AND GAS DIVISION
CHARLESTON

WELL LOCATION MAP
FILE NO. MON-116

+ Denotes location of well on United States Topographic Maps, scale 1 to 62,500, latitude and longitude lines being represented by border lines as shown.

- Denotes one inch spaces on border line of original tracing.



WEST VIRGINIA DEPARTMENT OF MINES
OIL & GAS DIVISION
W E L L R E C O R D

Permit No. Mon-116
Mannington Quad.

Oil Well

Company Philadelphia Oil Co.
Address Clarksburg, W. Va.
Farm Ugenus Moore, et ux ACRES 100
Location Mannington N/E 4-2
Well No. 5412 ELEV. 1311
District Clay - Monongalia County
Surface & Mineral Ugenus Moore, R#2, Fairview, W.Va.
Commenced Jan. 15, 1940
Completed Mar. 15, 1940
Oil 6 bbls. 1st 24 hrs.
Water -

CASING & TUBING
13 168 pulled
10 1034 1034
8-1/4 1936 pulled
6-5/8 2437 2437

Coal at:
633* 35*
906 12
922 12
1003 84

Clay	yl	s	0	15		Slate	dk	s	2140	2180	
Slate	dk	s	15	215	SL 151	Lime	dk	h	2180	2198	
Red Rock	rd	s	215	220		Slate	dk	s	2198	2201	
Slate-Shells	dk	hs	220	298		Big Lime	wh	h	2201	2275	
Red Rock	rd	s	298	302		Big Injun	wh	h	2275	2490	W 2286 3 blrs.
Lime	wh	h	302	350		Slate-Shell	dk	hs	2490	2775	W 2408
Slate&Shells	wh	h	350	472		Sand	dk	h	2775	2794	W 2429
Lime	wh	h	472	490		Slate-Shell	dk	hs	2794	2867	
Slate	wh	s	490	500		Sand	dk	h	2867	2890	Sh. Oil 2868
Lime	wh	h	500	567		Slate	dk	s	2890	2916	
Blue Sand	wh	h	567	603		Fifty Foot S	dk	h	2916	2952	Sh. Gas 2920-2937
Lime	wh	h	603	618		Slate	dk	s	2952	2955	
Sand	wh	h	618	633		Thirty Ft. S	wh	h	2955	3035	
Fairview Coal	bk	s	633	639		Sand-Shells	wh	h	3035	3065	
Lime	wh	h	639	665		Red Rock	rd	s	3065	3092	
Slate	wh	s	665	683		Slate-Shells	dk		3092	3123	
Lime	wh	h	683	712		Gordon Stray	lt	h	3123	3160	
Shells	dk	h	712	728		Slate	lt	s	3160	3170	
Lime	wh	h	728	744		Red Rock	rd	s	3170	3187	
Slate&Shells	wh	h	744	835		Gordon Sand	wh	h	3187	3215	
Lime	wh	h	835	874		Shells	wh	h	3215	3234	
Slate&Shell	wh	h	874	906		4th Sand	wh	h	3234	3268	Oil 3242
N.T. Coal	bk	s	906	907	SL 914	Slate-Shells	wh	h	3268	3314	
Lime	wh	h	907	922	W 907	Sand	wh	h	3314	3325	
Coal	bk	s	922	923	1/2 blr. hr.	Slate-Shells	lt		3325	3370	
Sand	gr	h	923	934		5th Sand	lt	s	3370	3375	Gas 3373
Slate	wh	h	934	940		Shells	lt	s	3375	3404	Oil & Gas 3403-14
Lime	wh	h	940	964		Bayard Sand	lt	s	3404	3418	
Slate	dk	s	964	1003		Slate			3418	3419	
Feh. Coal	bk	s	1003	1010	W 1010	Total Depth			3419		
Slate	dk	s	1010	1020	4 blr. hr.						
Lime	lt	h	1020	1050							
Slate&Shells	lt	s	1060	1155							
Red Rock	rd	s	1155	1165							
Slate	dk	s	1165	1205							
Red Rock	rd	s	1205	1215							
Slate	dk	s	1215	1295							
Red Rock	rd	s	1295	1315							
Slate-Shells	dk	s	1315	1358							
Sand	wh	h	1358	1378	Monandville?						
Coal	bk	s	1378	1379							
Lime	wh	h	1379	1390							
Slate	dk	s	1390	1426							
Dunkard Sd	wh	h	1426	1456	Little D.						
Slate	dk	s	1456	1590							
Lime	wh	h	1590	1630							
Slate&Shells	wh	sh	1630	1752							
1st Salt Sand	wh	h	1752	1818							
Slate	dk	s	1818	1845							
2nd Salt S	wh		1845	2000	W 1900 1 blr.						
Slate	dk	s	2000	2065	W 1950						
Red Rock	rd	s	2065	2078							
Lime	dk	h	2078	2140							