

LATITUDE 39°42'30"

1100 102 88

LONGITUDE

75'

7'5 OGIS topo location

7.5' loc	<u>2.865</u>	15' loc	<u>5.745</u>
		(calc.)	<u>0.770</u>

Company _____

Farm _____

Quad Wadestown (Marathon NC)

County Monongahela

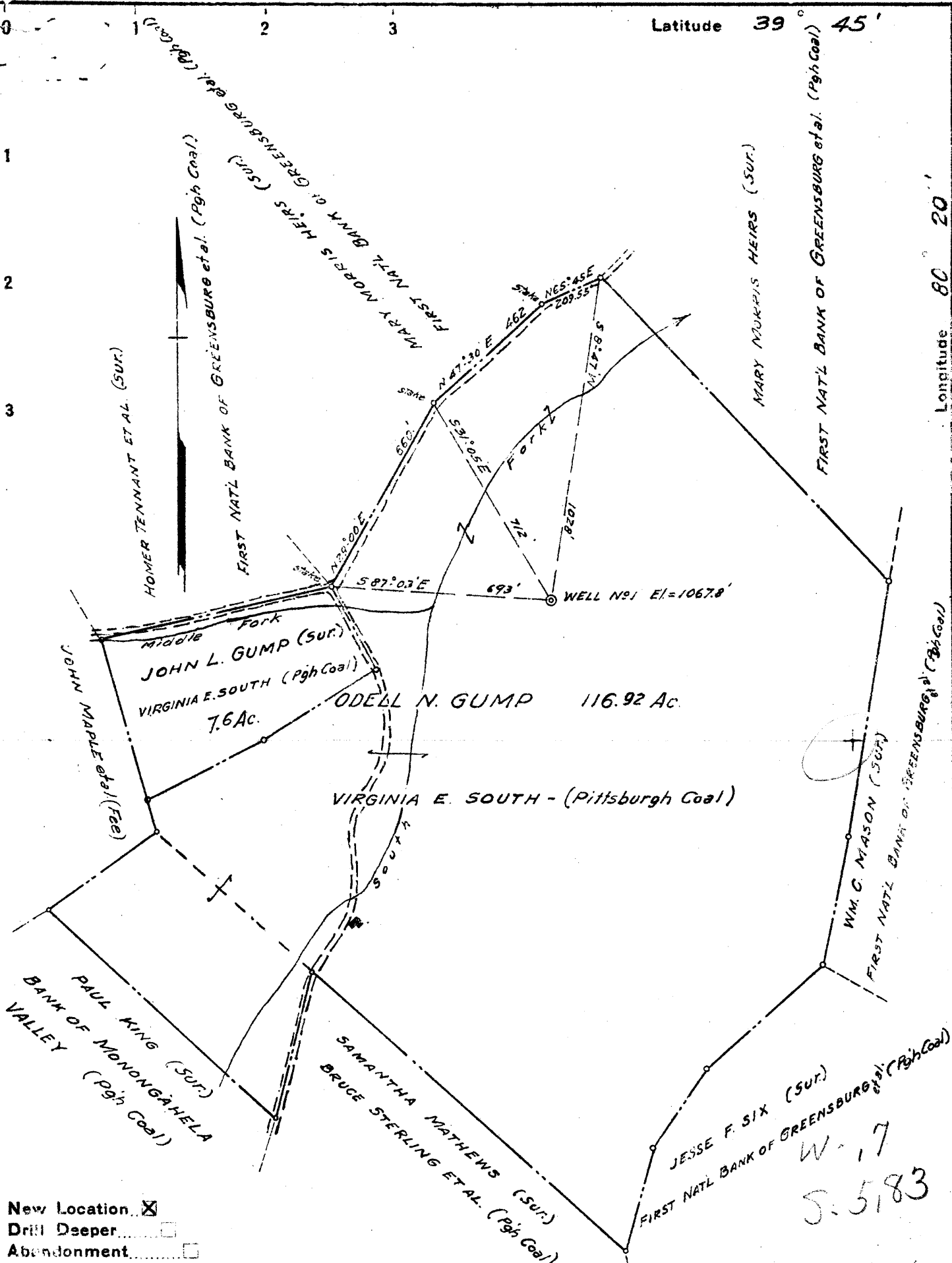
District Bethelle

WELL LOCATION MAP

File No. 061-123

Latitude 39° 45'

Longitude 80° 20'



New Location
 Drill Deeper
 Abandonment

Company PENN-ILL OIL & GAS CORP.
 Address 939 Gulf Bldg. PITTSBURGH, PA.
 Farm ODELL N. GUMP
 Tract _____ Acres 116.92 Lease No. 4
 Well (Farm) No. 1 Serial No. _____
 Elevation (Spirit Level) 1067.8'
 Quadrangle Mannington N. C.
 County Monongalia District Battelle
 Engineer O.W. Matheon
 Engineer's Registration No. 650
 File No. _____ Drawing No. _____
 Date 9-20-40 Scale 1"=400'

STATE OF WEST VIRGINIA
 DEPARTMENT OF MINES
 OIL AND GAS DIVISION
 CHARLESTON

WELL LOCATION MAP
 FILE NO. MON-123

+ Denotes location of well on United States Topographic Maps, scale 1 to 62,500, latitude and longitude lines being represented by border lines as shown.
 - Denotes one inch spaces on border line of original tracing.

W-17
 5.5183

WEST VIRGINIA DEPARTMENT OF MINES
OIL & GAS DIVISION
W E L L R E C O R D

Permit No. Mon-123

Company

Address

Farm

Location

Well No

District

Surface

Mineral

Commenced

Completed

Flow

Volume

Rock Pressure

Fresh Water

Penn-Ill Oil & Gas Corp.

939 Gulf Bldg., Pittsburgh, Pa.

Odell N. Gump Acres 116.92

Dunkard Creek

1 Elev. 1067.8'

Battelle Monongalia County

Odell N. Gump, P.O. Box 214, Brave, W. Va.

Same

Nov. 20, 1940

March 27, 1941

14/10ths W in 1"

42,000 C.F.

257½ lbs. 16 hrs.

232' Hole Full

Gas Well

Casing & Tubing

12' Wood Conductor

10½ 234'5" 234'5"

8½ 1396'8" 1396'8"

6½ 2174 2174'

Coal at 798' 3'

" 6'

Clay	Lt	S		80					
Lime	Wh	H	80	120	Slate & Sand	Dk	MH	2996	3028
Slate	Dk	S	120	200	Pink Rock		S	3028	3030
Sand	Wh	H	200	245	Gordon	Wh	H	3030	3075
Slate	Dk	S	245	320	Slate	Dk	S	3075	3079
Lime	Wh	H	320	370	Sand	Lt	H	3079	3124
Coal	Bk	S	370	373	Slate	Dk	S	3124	3133
Mapletown Coal	Bk	S	798	801	4th&5th Sand	Wh	H	3133	3192
Pitts. Coal	Bk	S	894	900	Slate	Wh	S	3192	3212
L. Dunkard	Wh	H	1309	1340	Lime	Wh	H	3212	3220
Slate	Dk	S	1340	1375	Slate	Lt	S	3220	3225
Pink Rock	Pink	S	1375	1395	Lime	Wh	H	3225	3231
Sand	Wh	H	1395	1401	Slate	Lt	S	3231	3282
Break Slate	Lt	S	1401	1419	Byard Sand	Y	MH	3282	3284
B. Dunkard	Wh	H	1419	1429	Slate&Shells	Lt	MH	3284	3315
Slate	Lt	S	1429	1465	TOTAL DEPTH				3315
Sand	Wh	H	1465	1503					
Slate	Dk	S	1503	1520					
Lime	Lt	H	1520	1565					
Slate	Lt	S	1565	1573					
Sand	Wh	H	1573	1636					
Slate	Dk	S	1636	1650					
Sand	Wh	H	1650	1675					
Slate	Bk	S	1675	1687					
Sand	Dk	H	1687	1700					
Sl.&Shells	Dk	S	1700	1800					
2nd Salt Sd.	Wh	H	1800	1828					
Slate	Dk	S	1828	1840					
3rd Salt Sd.	Wh	H	1840	1895					
Slate	Lt	S	1895	1921					
Red Rock		S	1921	2067					
Lime	Wh	H	2067	2080					
Slate	Gr	S	2080	2090					
Lime	Wh	H	2090	2098					
Pencil Cave	Dk	S	2098	2112					
Big Lime	Wh	H	2112	2178					
Slate	Dk	S	2178	2180					
Big Injun	Lt	H	2180	2382					
Slate	Gr	S	2382	2420					
Lime-Gritty	Wh	H	2420	2447					
Slate	Gr	S	2447	2454					
Lime-Gritty	Lt	H	2454	2475					
Lime Shells Broken-Irreg.			2475	2818-Lt.					
Slate	Dk	S	2818	2833					
50' Sand	Wh	H	2833	2854					
Slate	Dk	S	2854	2858					
Sand	Wh	H	2858	2900					
Slate	Dk	S	2900	2920					
Sand	Wh	H	2920	2932					
Pink Rock		S	2932	2934					
Sand	Wh	H	2934	2939					
Sand	Broken		2939	2955					
Sand	Lt	H	2955	2962					
Pink Rock		S	2962	2966					
Stray Sand	Lt	H	2966	2996					

NOTE: Coal at 370-373, reported slate.

Gas-2266-2269-4/10 W 1"

Gas-3089-3091-19/10-1" Water

Gas-3283-3284-10/10-1" Water

GAS PAYS:

2266-2269

3089-3091

3283-3284

SLM:

900

2174

3092

3137