

.015  
1.71w

**Latitude**

39°45'00"  
39 42 30

**Longitude**

1.71w

**Topo Location**

7.5' Loc. \_\_\_\_\_ 15' Loc. \_\_\_\_\_  
\_\_\_\_\_ (calc.) \_\_\_\_\_

**Company** Roy W Clavis

**Farm** Ralph Johnson & Maud Hall #4

**15' Quad** \_\_\_\_\_  
(sec.)

**7.5' Quad** Blacksville

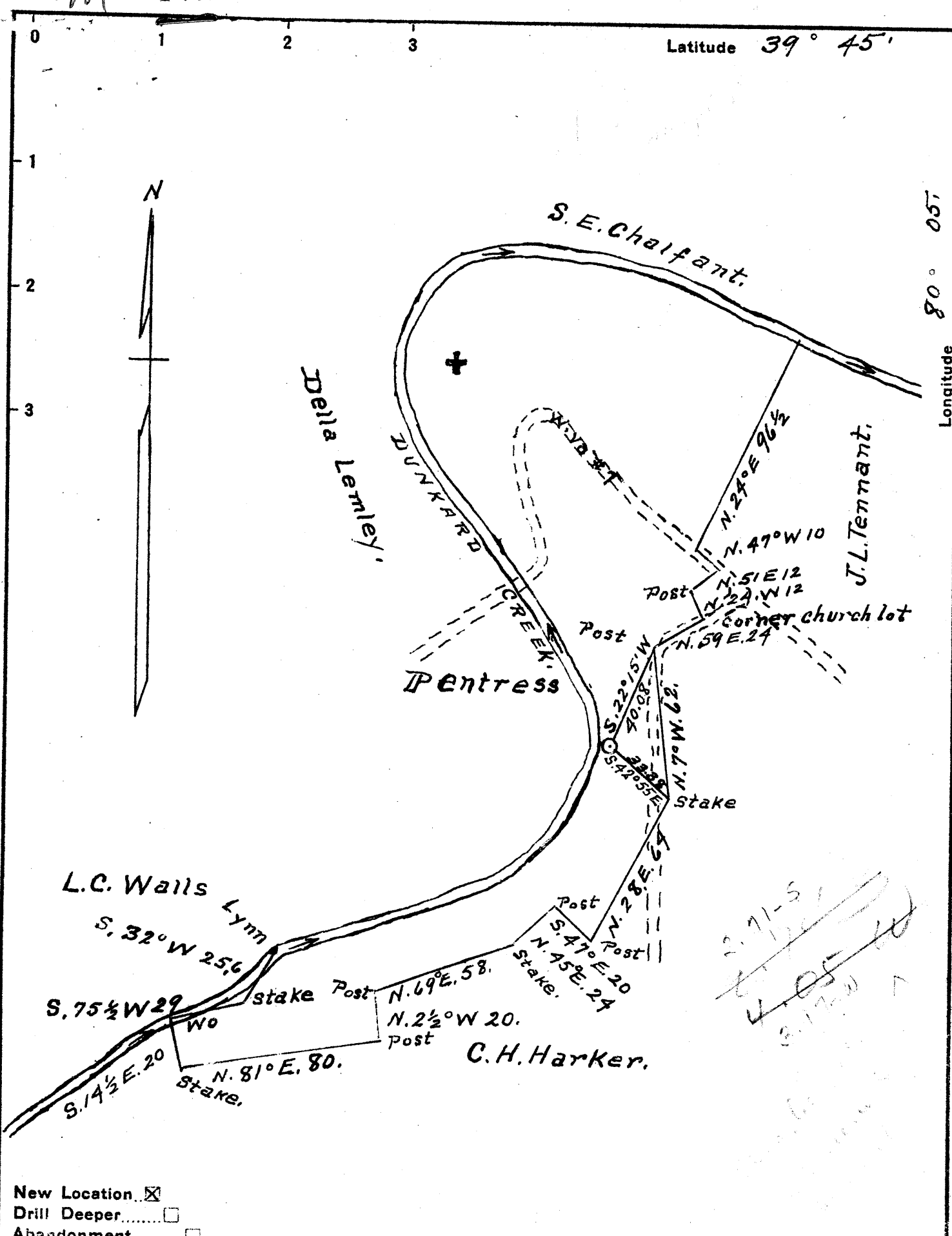
**District** Clay

**WELL LOCATION PLAT**

**County** 061 **Permit** 134

Latitude 39° 45'

Longitude 80° 05'



New Location   
 Drill Deeper   
 Abandonment

Company Roy W. Clovis  
 Address Waynesburg, Pa  
 Farm Ralph S. Johnson & Maud J. Hall  
 Tract one Acres 172A Lease No. \_\_\_\_\_  
 Well (Farm) No. 4 Serial No. \_\_\_\_\_  
 Elevation (Spirit Level) 944'  
 Quadrangle Blacksville  
 County Monongalia District Clay  
 Engineer A. L. Headley  
 Engineer's Registration No. \_\_\_\_\_  
 File No. \_\_\_\_\_ Drawing No. \_\_\_\_\_  
 Date Aug. 8, 1941 Scale 1 inch = 50 poles

STATE OF WEST VIRGINIA  
 DEPARTMENT OF MINES  
 OIL AND GAS DIVISION  
 CHARLESTON

WELL LOCATION MAP  
 FILE NO. MON-134

+ Denotes location of well on United States Topographic Maps, scale 1 to 62,500, latitude and longitude lines being represented by border lines as shown.  
 - Denotes one inch spaces on border line of original tracing.

WEST VIRGINIA DEPARTMENT OF MINES  
OIL & GAS DIVISION  
WELL RECORD

|             |                 |       |      |       |                   |  |  |       |                          |
|-------------|-----------------|-------|------|-------|-------------------|--|--|-------|--------------------------|
| Permit No.  | Mon-134         |       |      |       |                   |  |  |       |                          |
| Company     | Roy W. Clovis   |       |      |       |                   |  |  |       | Dry Hole                 |
| Address     | Waynesburg, Pa. |       |      |       |                   |  |  |       | Casing & Tubing          |
| Farm        | Johnson & Hall  | Acres | 172  |       |                   |  |  | 8 1/2 | 210                      |
| Location    | Dunkard         |       |      |       |                   |  |  | 6 5/8 | 545                      |
| Well No     | 4               |       |      | Elev. | 944               |  |  |       | 210                      |
| District    | Clay            |       |      |       | Monongalia County |  |  |       | 545                      |
| Surface     | Johnson & Hall  |       |      |       | Shinston, W.Va.   |  |  |       | Coal at 182', 433', 514' |
| Mineral     | Same            |       |      |       |                   |  |  |       |                          |
| Commenced   | Aug. 27, 1941   |       |      |       |                   |  |  |       |                          |
| Completed   | Sept. 22, 1941  |       |      |       |                   |  |  |       |                          |
| Fresh Water | 45'             | 182'  | 433' |       |                   |  |  |       |                          |
| Salt Water  |                 |       |      |       |                   |  |  |       |                          |

|          |       |   |      |                       |             |    |   |      |      |
|----------|-------|---|------|-----------------------|-------------|----|---|------|------|
| Soil     |       |   | 0    | 25                    | Slate       | Dk | M | 1096 | 1102 |
| Mud      | Y     | S | 25   | 40                    | Sand        | Dk | H | 1102 | 1123 |
| Lime     | Gr    | M | 40   | 43 HFW 45'            | Slate       | Dk | S | 1123 | 1134 |
| Slate    | Gr    | S | 43   | 75                    | Limo        | Gr | H | 1134 | 1168 |
| Lime     | Y     | M | 75   | 85                    | Slate       | Dk | S | 1168 | 1214 |
| Slate    | Bk    | S | 85   | 95                    | Shale-Sandy | Dk | S | 1214 | 1232 |
| Slate    | Gr    | S | 95   | 110                   | Sand        | Dk | H | 1232 | 1248 |
| Lime     | Gr    | H | 110  | 118                   | Slate       | Dk | S | 1248 | 1253 |
| Sand     | Lt    | H | 118  | 174                   | TOTAL DEPTH |    |   |      | 1253 |
| Slate    | Dk    | S | 174  | 182                   |             |    |   |      |      |
| Coal     | Bk    | S | 182  | 187 HFW 182' <        |             |    |   |      |      |
| Mud      | Bl    | S | 187  | 210                   |             |    |   |      |      |
| Lime     | Gr    | H | 210  | 234                   |             |    |   |      |      |
| Slate    | Dk    | S | 234  | 282                   |             |    |   |      |      |
| Lime     | Lt    | M | 282  | 290                   |             |    |   |      |      |
| Slate    | Lt    | M | 290  | 325                   |             |    |   |      |      |
| Lime     | Lt    | H | 325  | 368                   |             |    |   |      |      |
| Sand     | Lt    | H | 368  | 425                   |             |    |   |      |      |
| Slate    | Dk    | S | 425  | 433                   |             |    |   |      |      |
| Coal     | Bk    | S | 433  | 440 HFW 433 <         |             |    |   |      |      |
| Lime     | Gr    | H | 440  | 452                   |             |    |   |      |      |
| Slate    | Lt    | M | 452  | 458                   |             |    |   |      |      |
| Lime     | Gr    | H | 458  | 478                   |             |    |   |      |      |
| Slate    | Dk    | S | 478  | 490                   |             |    |   |      |      |
| Lime     | Gr    | M | 490  | 500                   |             |    |   |      |      |
| Slate    | Dk    | M | 500  | 514                   |             |    |   |      |      |
| Coal     | Bk    | S | 514  | 521                   |             |    |   |      |      |
| Slate    | Dk    | M | 521  | 533                   |             |    |   |      |      |
| Lime     | Dk    | M | 533  | 535                   |             |    |   |      |      |
| Slate    | Wh    | S | 535  | 540                   |             |    |   |      |      |
| Lime     | Gr    | M | 540  | 562 Broken            |             |    |   |      |      |
| Slate    | Dk    | M | 562  | 580                   |             |    |   |      |      |
| Lime     | Lt    | H | 580  | 588                   |             |    |   |      |      |
| Slate    | Dk    | M | 588  | 614                   |             |    |   |      |      |
| Lime     | Lt    | H | 614  | 622                   |             |    |   |      |      |
| Slate    | Bl    | S | 622  | 660                   |             |    |   |      |      |
| Sand     | Gr    | H | 660  | 675                   |             |    |   |      |      |
| Slate    | Lt    | M | 675  | 700                   |             |    |   |      |      |
| Slate    | Bk    | S | 700  | 720                   |             |    |   |      |      |
| Sand     | Dk    | H | 720  | 754 <i>Murphy</i>     |             |    |   |      |      |
| Slate    | Dk    | S | 754  | 761                   |             |    |   |      |      |
| Sand     | Dk    | H | 761  | 785                   |             |    |   |      |      |
| Slate    | Dk    | S | 785  | 800                   |             |    |   |      |      |
| Red Rock |       | S | 800  | 826                   |             |    |   |      |      |
| Slate    | Dk    | S | 826  | 861                   |             |    |   |      |      |
| Lime     | Lt    | H | 861  | 868                   |             |    |   |      |      |
| Slate    | Lt    | S | 868  | 889                   |             |    |   |      |      |
| Sand     | Gr    | H | 889  | 905 <i>Dunkard</i>    |             |    |   |      |      |
| Slate    | Lt    | S | 905  | 956                   |             |    |   |      |      |
| Sand     | Wh    | M | 956  | 966 <i>L. Dunkard</i> |             |    |   |      |      |
| Slate    | Dk    | S | 966  | 1010                  |             |    |   |      |      |
| Lime     | Gr    | M | 1010 | 1018                  |             |    |   |      |      |
| Slate    | Green | S | 1018 | 1030                  |             |    |   |      |      |
| Lime     | Gr    | H | 1030 | 1039                  |             |    |   |      |      |
| Sand     | Dk    | H | 1039 | 1067 <i>Dunkard</i>   |             |    |   |      |      |
| Slate    | Dk    | M | 1067 | 1090                  |             |    |   |      |      |
| Lime     | Dk    | H | 1090 | 1096-Gritty           |             |    |   |      |      |