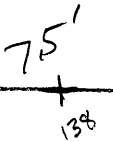


LATITUDE 39°40'00"

79°57'30"

LONGITUDE



7'5 OGIS topo location

7.5' loc	<u>2.355</u>	15' loc	<u>2.355</u>
	<u>0.20w</u>	(calc.)	<u>2.42w</u>

Company _____

Farm _____

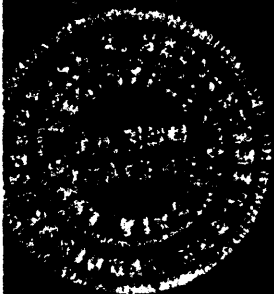
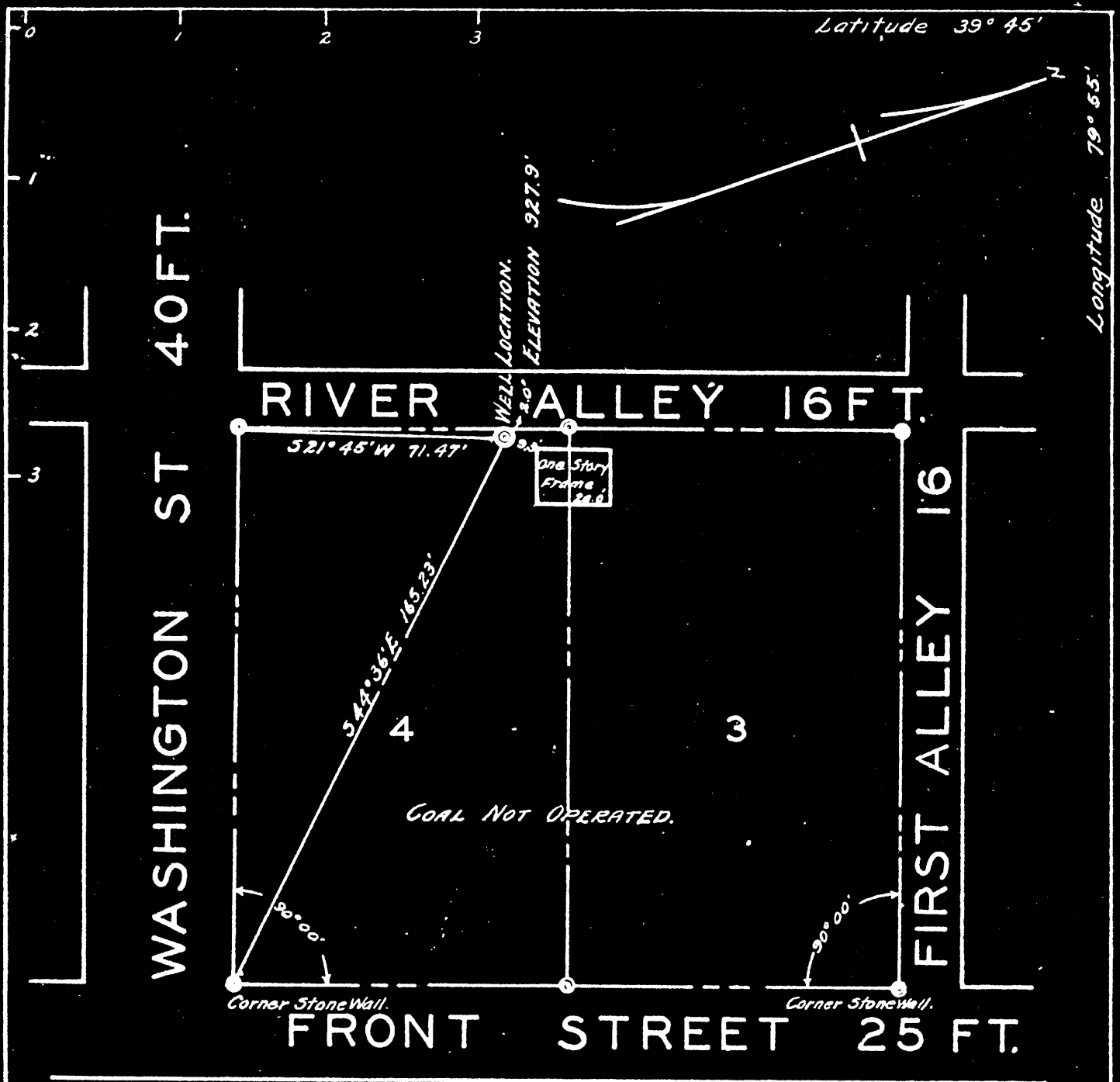
Quad Morgantown N WC

County Monongalia

District Morgan

WELL LOCATION MAP

File No. 061-138



Company E. A. & HELEN H. LIVESAY
 Address MORGANTOWN, W. VA.
 Farm LOTS 3 & 4 KECK ADDITION, WESTOVER
 Tract 1 Acres (LOTS) Lease No. _____
 Well (Farm No.) 1 Serial No. 1
 Quadrangle MORGANTOWN.
 County MONONGALIA.
 District GRANT.
 Engineer Carl W. Jensen
 Engineer's Registration No. 380
 File No. 1-190-145 Drawing No. 5321
 Date June 14, 1941 Scale 1" = 40'

STATE OF WEST VIRGINIA
 DEPARTMENT OF MINES
 OIL AND GAS DIVISION
 CHARLESTON

 WELL LOCATION MAP
 FILE NO. MON-136

 + Denotes location of well on United States
 Topographic Maps, scale 1" to 62,500,
 Latitude and Longitude being represented
 by border lines as shown.

 - Denotes one inch spaces on border line
 of original tracing.