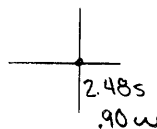


Latitude

Longitude



Topo Location

7.5' Loc. _____ 15' Loc. _____
 _____ (calc.) _____

Company South Penn Nat Gas

Farm JN Statton

15' Quad _____
(sec.)

7.5' Quad Blacksville

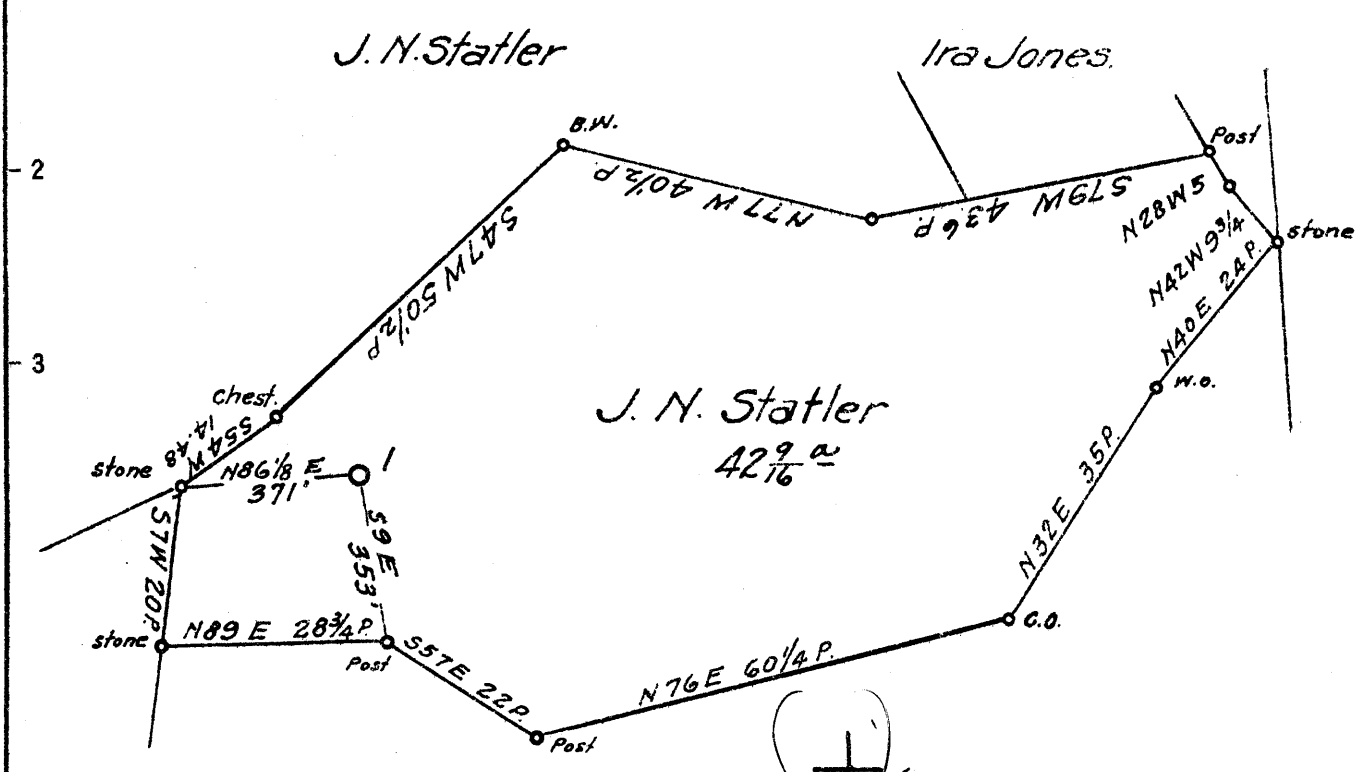
District Clay

WELL LOCATION PLAT

County 061 Permit 164

Latitude 39 45'

Longitude 80 05'



George Wright.

Surface & Mapletown Coal
 J. N. Statler
 Core, W. Va.
 R.D. #1.
 Pittsburgh Coal
 Cochran Coal & Coke Co.
 Dawson, Pa.

5.26-5
 3.15-10

New Location
 Drill Deeper
 Abandonment

N15E27 Map N72E

Company South Penn Natural Gas Co.
 Address Parkersburg, W. Va.
 Farm J. N. Statler
 Tract _____ Acres 45 Lease No. 73361
 Well (Farm) No. 1 Serial No. _____
 Elevation (Spirit Level) 1321.23
 Quadrangle Blacksville OC
 County Monongalia District Clay
 Engineer Emmon Haines
 Engineer's Registration No. _____
 File No. _____ Drawing No. _____
 Date 9-2-43 Scale 1" = 400'

STATE OF WEST VIRGINIA
 DEPARTMENT OF MINES
 OIL AND GAS DIVISION
 CHARLESTON

WELL LOCATION MAP
 FILE NO. MON-164

+ Denotes location of well on United States Topographic Maps, scale 1 to 62,500, latitude and longitude lines being represented by border lines as shown.

- Denotes one inch spaces on border line of original tracing.

(065)

WEST VIRGINIA DEPARTMENT OF MINES
OIL & GAS DIVISION
W E L L R E C O R D

Permit No. Mon 164
Blacksville Quad.
Company
Address
Farm
Location
Well No
District
Surface
Mineral
Commenced (Deeper)
Completed
Date shot

Gas Well
CASING & TUBING

South Penn Natural Gas Co.
Union Trust Bldg., Parkersburg, W.Va.
J.N. Statler (DD) Acres 45 5 3/16 2070 2070

1 Elev. 1321.23
Clay Monongalia County
J.N. Statler, Core, W.Va.
J.N. Statler et al, Core, W.Va.
Dec. 14, 1943
March 11, 1944
3-15-44- 30 qts. 3124.6 - 3136
3-18-44- 20 qts. 3204-3212
3-23-44- 30 qts. 3235-3247
2.2 1 1/2" Orf.
31,563 inc. to 55,993 C.F.
2843'4"

Open flow
Volume
Salt Water

		DRILLED DEEPER			
Commenced drilling deeper	B. Injun	2236		Sandy Lime	3068 3073
Big Injun	2236	2277		Lime	3073 3080
Lime	2277	2350		Lime	3080 3086
Sand	2350	2386		Sandy Lime	3086 3093
Lime	2386	2450		Sandy Lime	3093 3097
Lime	2450	2498		Lime	3097 3122
Lime	2488	2527		Stray Sand	3122 3136
Slate	2527	2529		Lime	3136 3194
Lime	2529	2578		Slate	3194 3197
Lime	2578	2597		Lime	3197 3203
Lime	2597	2650		Fifth Sand	3203 3212
Stray Sand	2650	2656		Lime	3212 3220
Lime	2656	2679		Slate	3220 3233
Sand	2679	2685		Lime	3233 3234
Lime	2685	2702		Bayard	3234 3249
Lime	2702	2727		Lime	3249 3260
Lime	2727	2755		Lime, Gritty	3260 3265
Lime	2755	2768		Lime	3265 3368
Sand	2768	2775		Slate	3368 3371
Lime	2775	2780		Lime	3371 3390
Lime Sandy	2780	2812		Lime	3390 3402
Lime	2812	2815		Lime	3402 3472
Red Rock	2815	2816		Lime, Sandy	3472 3487
Lime	2816	2824		Lime	3487 3492
Lime	2824	2837		Slate	3492 3501
Sand	2837	2841		TOTAL DEPTH	3501
Sand	2841	2844			
Sand	2844	2854		Remarks: Hole plugged back to 3260	
Lime	2854	2857		3260- Total depth	
Lime	2857	2860		2.2 water 1 1/2" Orf. 55,993 C.F.	
Lime	2860	2875		Pressure test 3/30-44 through 2" tubing	
Stray Sand	2875	2878		1 Min 2 Min 8 Min 4 Min 5 Min 10 Min	
Lime	2878	2883		5 8 11 13 15 25	
Lime	2883	2885			
Lime	2885	2897		15 Min 1 Hr 24 Hr.	
Stray Sand	2897	2900		35 105 295	
Red Rock	2900	2901			
Slate	2901	2904		Gas 2680-2682 7 M. C.F.	
Lime	2904	2952		Gas 3129-3130 18 MCF	
Stray Sand	2952	2956		Gas 3205-3208 25 MCF	
Lime	2956	2969		Gas 3236-3238 43 MCF	
Red Rock	2969	2971			
Lime	2971	2991			
Lime	2991	2994			
Lime	2994	3005			
Gordon Stray	3005	3020			
Lime	3020	3025			
Slate	3025	3030			
Lime	3030	3051			
Sandy Lime	3051	3059			
Lime	3059	3062			
Fourth Sand	3062	3068			