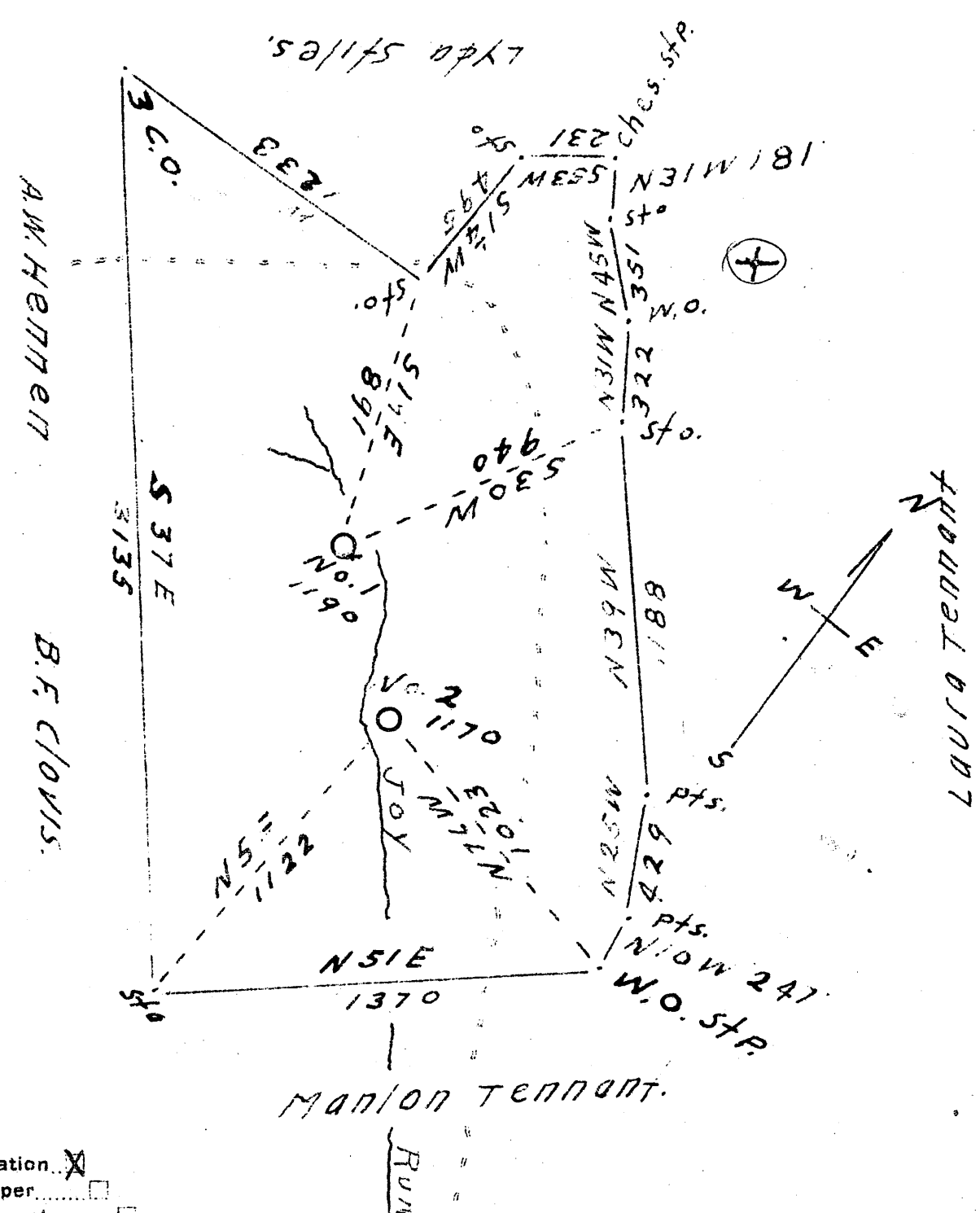


Latitude 39 45'

Longitude 80° 20'



New Location
 Drill Deeper
 Abandonment

Company Clovis + Isinminger
 Address Cameron W.Va.
 Farm Alex. Hennen Heirs
 Tract One Acres 94+ Lease No.
 Well (Farm) No. One Serial No.
 Elevation (Spirit Level) No. 1 1190 No. 2 1170
 Quadrangle Mannington.
 County Monongalia District Battelle
 Engineer J.M. Cochran
 Engineer's Registration No. Co. Surveyor
West 31 Co.
 File No. Drawing No.
 Date 9-23-1943 Scale 1-in. = 500 Ft.

STATE OF WEST VIRGINIA
 DEPARTMENT OF MINES
 OIL AND GAS DIVISION
 CHARLESTON

WELL LOCATION MAP
 FILE NO. MON-165

+ Denotes location of well on United States Topographic Maps, scale 1 to 62,500, latitude and longitude lines being represented by border lines as shown.
 - Denotes one inch spaces on border line of original tracing.

OIL & GAS DIVISION
W E L L R E C O R D

Permit No. Mon 165
Mannington Quad.
Company
Address
Farm
Location
Well No
District
Surface
Mineral
Commenced
Completed
Fresh Water

Dry Hole
CASING & TUBING

Clovis & Isiminger
Cameron, W.Va.
Alex Hennen Heirs Acres 94
One Elev. 1190
Battelle Monongalia County
Alex Hennen Heirs, Burton, W.Va. 920'
Same
Oct. 19, 1943
Nov. 15, 1943
35'

8 1/2 40
6 5/8 287
Coal at 580 to 585;
820 to 825'; 815 to

Shale	Dk	S		10
Slate Shale			10	50
Lime Shale	Lt		50	105
Slate	Dk	S	105	160
Lime Gritty	Lt	H	160	210
Slate	Lt	S	210	340
Lime	Lt	H	340	400
Slate	Dk	S	400	490
Lime Gritty	Lt	H	490	525
Slate	Dk	S	525	560
Sand Bluff	H		560	580
Waynesburgh Coal			580	585
Lime	Lt	H	585	615
Red Rock		S	615	640
Lime	Lt	H	640	715
Slate	Dk	S	715	740
Lime	Lt	H	740	815
Slate		S	815	820
Mapletown Coal			820	825
Lime	Lt	H	825	830
Slate	Dk	S	830	850
Lime	Lt	H	850	885
Shale		S	885	889
Lime	Lt	H	889	895
Slate	Dk	S	895	920