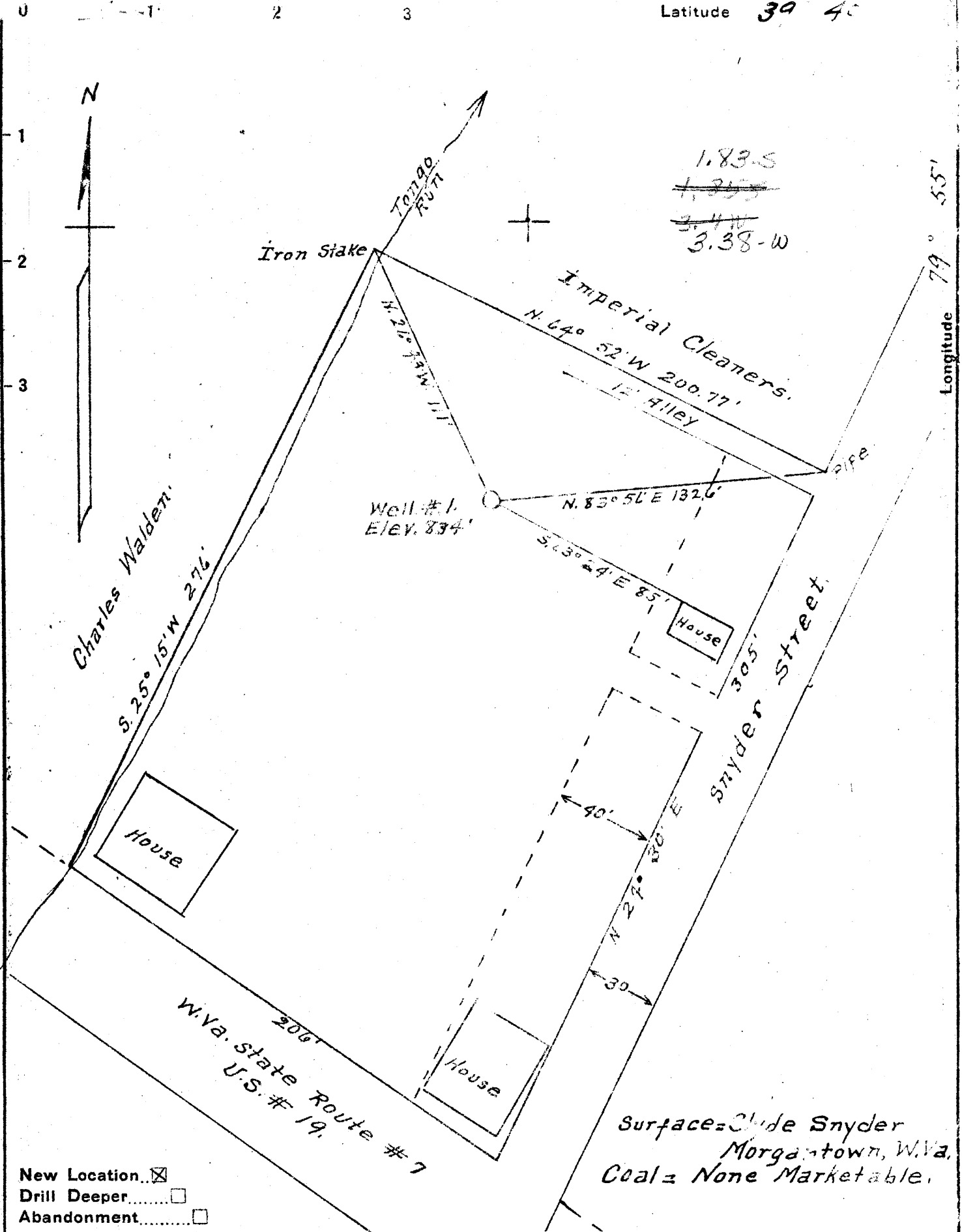


M

Latitude 39 40



New Location...
 Drill Deeper...
 Abandonment...

Surface = Clyde Snyder
 Morgantown, W.Va.
 Coal = None Marketable.

Company John Conklin
 Address Waynesburg Pa
 Farm Clyde Snyder
 Tract 1 Acres 1 1/2 Lease No. _____
 Well (Farm) No. 1 Serial No. _____
 Elevation (Spirit Level) 834'
 Quadrangle Morgantown
 County Monongalia District Grant
 Engineer A. L. Headley
 Engineer's Registration No. 2021
 File No. _____ Drawing No. _____
 Date 10-18-1949 Scale 1" = 50'

STATE OF WEST VIRGINIA
 DEPARTMENT OF MINES
 OIL AND GAS DIVISION
 CHARLESTON

WELL LOCATION MAP
 FILE NO. MON-192

+ Denotes location of well on United States Topographic Maps, scale 1 to 62,500, latitude and longitude lines being represented by border lines as shown.
 - Denotes one inch spaces on border line of original tracing.

WEST VIRGINIA DEPARTMENT OF MINES
OIL & GAS DIVISION
W E L L R E C O R D

Permit No. Mon 192
Morgantown Quad.
Company
Address
Farm
Location
Well No.
District
Surface
Mineral
Commenced
Completed
Not shot
Open flow
Final
Rock Pressure
Fresh Water

John R. Conklin
Waynesburg, Pa.
Clyde Snyder Acres 2
Monongahela River
1 Elev. 834
Grant Monongalia County
Clyde Snyder, Westover, W.Va.
None
Mar. 1, 1950
Apr. 20, 1950
12/10ths W in 2"
30/10ths W in 3" 520 MCF
370# in 12 hrs.
505'

Gas Well
CASING & TUBING

	10	93	93
	8 1/2	470	470
	6 5/8	947	947
	Anchor Packer		
	Size 6 x 2		
	Depth 985		
	Perf. top 1020		
	bot 1030		
	top 1055		
	bot 1063		

No coal

Clay	0	78
✓ Murphy Sand	78	105
Slate & Shells	105	168
Red Rock	168	170
Slate	170	184
Lime	184	209
✓ Coal	209	214
Shells	214	235
✓ B. Dunkard	235	250 - Dunkard
Slate & Shells	250	289
Lime	289	296
✓ B. Dunkard	296	360
Lime & Slate	360	445
✓ Salt Sand	445	600
Slate	600	604
✓ Salt Sand	604	690
Slate & Shells	690	754
Lime	754	770
✓ Maxon Sand	770	810
Red Rock	810	815
Lime	815	835
Sand	835	842
Red Rock	842	846
Slate	846	853
Lime	853	880
Pink Rock	880	884
✓ Little Lime	884	907
Red Rock	907	908
✓ Big Lime	908	999
Red Lime 306	999	1001
✓ Big Injun 371	1001	
T.D.		1067
Gas and Water 299';		
Fresh Water 505		

Gas 1020' 12/10 W in 2"
Gas 1063' 30/10 W in 3"

1001
834
-167

.047
5.20 [225
218]