

Latitude

Longitude

80°25'00"

257s  
.02w

Topo Location

7.5' Loc. \_\_\_\_\_ 15' Loc. 257s  
\_\_\_\_\_ (calc.) 0.02w

Company Preston Oil Co

Farm RJ Smuder #1

15' Quad Mannington NW  
(sec.)

7.5' Quad Hundred

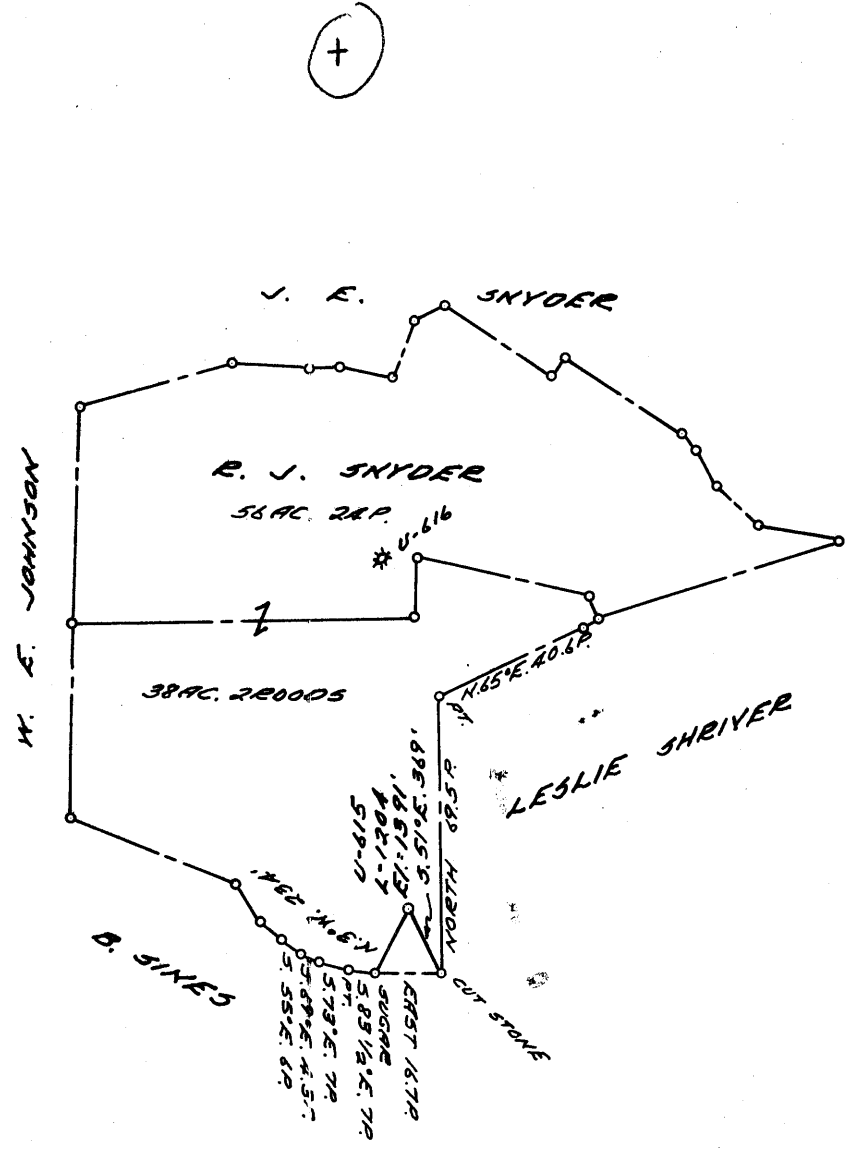
District Battello

WELL LOCATION PLAT

County 061 Permit 225

LATITUDE 39 ° 45 ' 1

LONGITUDE 80 ° 20 '



2.44-S  
A.35-W

COAL OWNED BY Wheeling Dollar Savings & Trust Co.  
Consolidation Coal Company

- NEW LOCATION
- RECONDITION
- DRILL DEEPER
- ABANDONMENT

"I, the undersigned, hereby certify that this map is correct to the best of my knowledge and belief and shows all the information required by paragraph 6 of the rules and regulations of the oil and gas section of the mining laws of West Virginia."  
Minimum degree of accuracy is one part in 200'

Signed Thomas E. Virgin (N.M.)  
# 1503

COMPANY THE PEESTON OIL COMPANY  
 ADDRESS 1800 DUBLIN RD. COLUMBUS, OHIO  
 FARM R. J. SNIDER  
 MAP P-26-2 ACRES 100 LEASE NO. 2902  
 WELL (FARM) NO. 1 SERIAL NO. U-615 (L-1204)  
 ELEVATION (SPIRIT LEVEL) 1391'  
 QUADRANGLE MANNINGTON  
 COUNTY MONONGOLIA DISTRICT BATTELLE  
 POINT OF PROVEN ELEVATION RD. INTERSECTION N. OF PROPERTY AND IS AT AN EL. 1166'  
 FILE NO. \_\_\_\_\_ DRAWING NO. Y-28-371  
 DATE 1 NOVEMBER 1966 SCALE 1" = 800'

STATE OF WEST VIRGINIA  
 DEPARTMENT OF MINES  
 OIL AND GAS DIVISION  
 CHARLESTON  
 WELL LOCATION MAP  
 FILE NO. MON-225  
Issued Plugging Permit 11-14-66  
 + DENOTES LOCATION OF WELL ON UNITED STATES TOPOGRAPHIC MAPS, SCALE 1 TO 62,500, LATITUDE AND LONGITUDE LINES BEING REPRESENTED BY BORDER LINES AS SHOWN.  
 - DENOTES ONE INCH SPACES ON BORDER LINE OF ORIGINAL TRACING.



STATE OF WEST VIRGINIA  
DEPARTMENT OF MINES  
OIL AND GAS DIVISION

Quadrangle Wilmington  
Permit No. MON-225

WELL RECORD

Oil or Gas Well Gas  
(KIND)

Company THE PRESTON OIL COMPANY  
Address 800 UNION TRUST BUILDING, PGH., PA.  
Farm R. J. Snider Acres 100  
Location (waters) \_\_\_\_\_  
Well No. 1204 (U-615) Elev. 1391  
District Battelle County Monongalia  
The surface of tract is owned in fee by \_\_\_\_\_  
Address \_\_\_\_\_  
Mineral rights are owned by \_\_\_\_\_  
Address \_\_\_\_\_  
Drilling commenced May 15, 1956  
Drilling completed June 27, 1956  
Date Shot \_\_\_\_\_ From \_\_\_\_\_ To \_\_\_\_\_  
With \_\_\_\_\_  
Open Flow \_\_\_\_\_ /10ths Water in \_\_\_\_\_ Inch  
\_\_\_\_\_ /10ths Merc. in \_\_\_\_\_ Inch  
Volume \_\_\_\_\_ Cu. Ft.  
Rock Pressure \_\_\_\_\_ lbs. \_\_\_\_\_ hrs.  
Oil \_\_\_\_\_ bbls., 1st 24 hrs.  
Fresh water \_\_\_\_\_ feet \_\_\_\_\_ feet  
Salt water \_\_\_\_\_ feet \_\_\_\_\_ feet

Casing and Tubing	Used in Drilling	Left in Well	Packers
Size			Kind of Packer
16			
18			
10	236	236	Size of
8 1/4	1650	1650	
6 1/2	2355	2355	Depth set
5 3/16			
3			Perf. top
2			Perf. bottom
Liners Used			Perf. top
			Perf. bottom

CASING CEMENTED \_\_\_\_\_ SIZE \_\_\_\_\_ No. Ft. \_\_\_\_\_ Date \_\_\_\_\_  
COAL WAS ENCOUNTERED AT \_\_\_\_\_ FEET \_\_\_\_\_ INCHES  
\_\_\_\_\_ FEET \_\_\_\_\_ INCHES FEET \_\_\_\_\_ INCHES  
\_\_\_\_\_ FEET \_\_\_\_\_ INCHES FEET \_\_\_\_\_ INCHES

Formation	Color	Hard or Soft	Top	Bottom	Oil, Gas or Water	Depth Found	Remarks
Total Depth			2332				
Lime			2332	2410			
Sand			2410	2660			
Slate and Shells			2660	2950			
Sand			2950	2970			
Shell			2970	3010			
Sand			3010	3028			
Slate and shells			3028	3104			
Sand			3104	3162			
Slate and shells			3162	3170			
Sand			3170	3231			
Pink rock			3231	3233			
Sand			3233	3268			
Slate			3268	3274			
Sand			3274	3355			
Slate			3355	3368			
Sand			3368	3411			
Slate and shells			3411	3575			
Sand			3575	3582			
Slate and shells			3582				
TOTAL DEPTH:				3700			
				2332 1391 941			
				2332 1391 941	Show oil at 3322' and 3348' More gas at 3578'		

