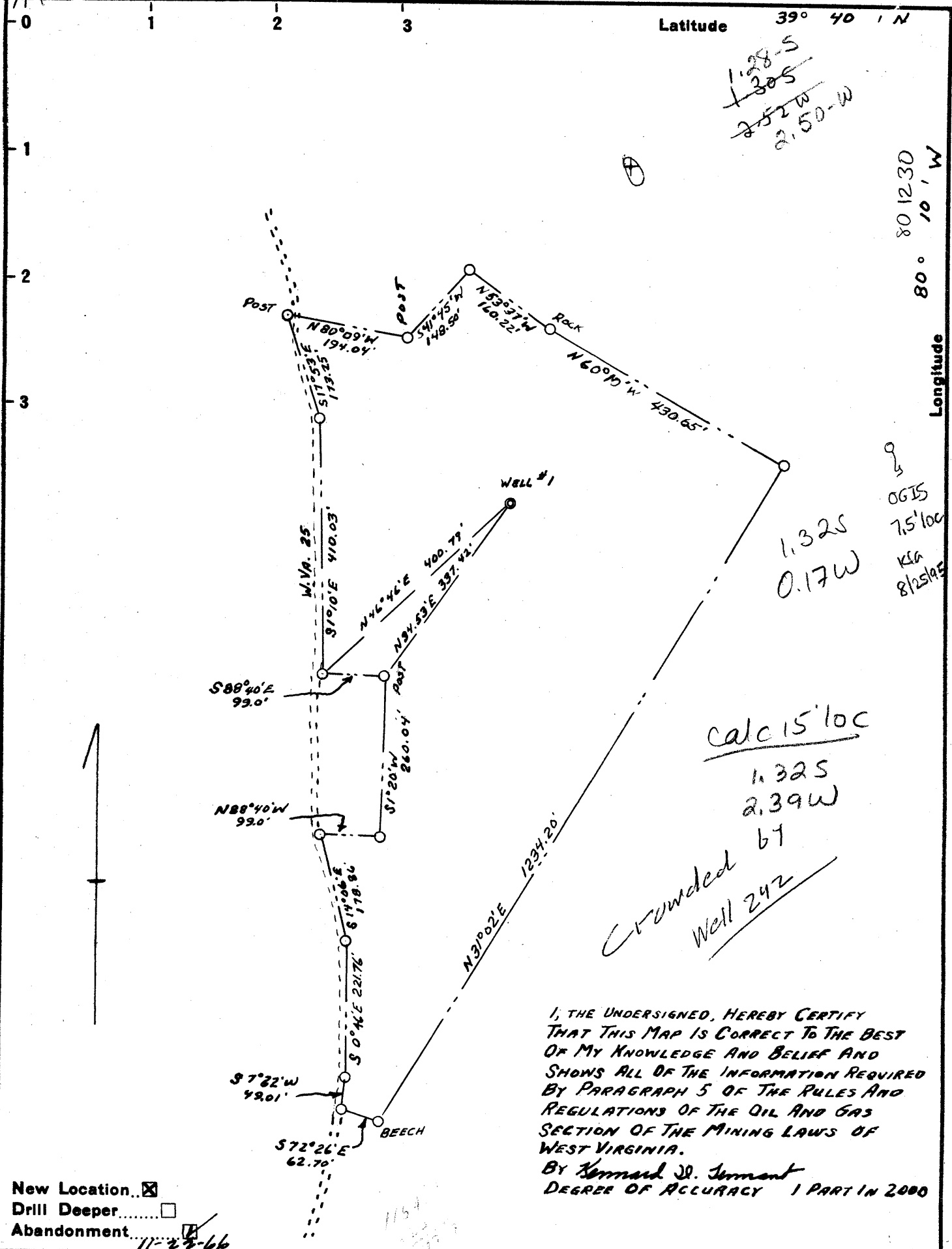


TCP



I, THE UNDERSIGNED, HEREBY CERTIFY THAT THIS MAP IS CORRECT TO THE BEST OF MY KNOWLEDGE AND BELIEF AND SHOWS ALL OF THE INFORMATION REQUIRED BY PARAGRAPH 5 OF THE RULES AND REGULATIONS OF THE OIL AND GAS SECTION OF THE MINING LAWS OF WEST VIRGINIA.
 BY Kennard D. Tennant
 DEGREE OF ACCURACY 1 PART IN 2000

New Location
 Drill Deeper
 Abandonment 11-22-66

Company YOST & YOST INC.
 Address ROUTE #2 FAIRVIEW, W.VA.
 Farm RICHARD MALOTT
 Tract _____ Acres 12.19 Lease No. _____
 Well (Farm) No. 1 Serial No. _____
 Elevation (Spirit Level) 1154.9
 Quadrangle BLACKSVILLE - WC
 County MONONGALIA District CLAY
 Engineer Kennard D. Tennant
 Engineer's Registration No. 4470
 File No. 2-190-242 Drawing No. 9625
 Date 2-11-66 Scale 1" = 200'

STATE OF WEST VIRGINIA
 DEPARTMENT OF MINES
 OIL AND GAS DIVISION
 CHARLESTON

WELL LOCATION MAP

FILE NO. MON-290

Issued Plugging 11-22-66

+ Denotes location of well on United States Topographic Maps, scale 1 to 62,500, latitude and longitude lines being represented by border lines as shown.
 - Denotes one inch spaces on border line of original tracing.



STATE OF WEST VIRGINIA
DEPARTMENT OF MINES
OIL AND GAS DIVISION //

Rotary
Spudder
Cable Tools
Storage

Quadrangle Blacksville

Permit No. MAN 209 290

WELL RECORD

Oil or Gas Well Dry Hole
(KIND)

Company Yost & Yost Inc.
Address Route 2, Fairview, W. Va.
Farm Richard Malott Acres 12.19
Location (waters) Days Run
Well No. 1 Elev. 1154.9'
District Clay County Monongalia
The surface of tract is owned in fee by Richard Malott
Address Route 2, Fairview, W. Va.
Mineral rights are owned by Yost & Yost Inc. & Edward Yost
Address Route 2, Fairview, W. Va.
Drilling commenced 2/28/66
Drilling completed 10/24/66
Date Shot 10/24/66 From 2164 To 2194
With 250 lbs. Jeleton

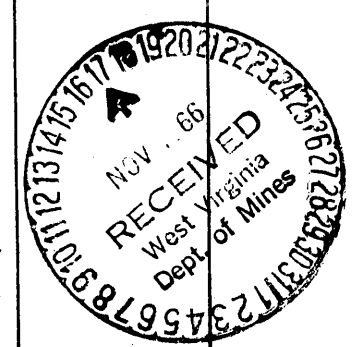
Casing and Tubing	Used in Drilling	Left in Well	Packers
Size			Kind of Packer
16			
13			
10	<u>385'</u>		Size of
8 3/4	<u>1117'</u>	<u>1117</u>	
6 3/4	<u>1581'</u>	<u>1581</u>	Depth set
5 3/16	<u>2046'</u>	<u>2046</u>	
4 1/2			Perf. top
3			Perf. bottom
2			Perf. top
Liners Used			Perf. bottom

Open Flow /10ths Water in _____ Inch
None /10ths Merc. in _____ Inch
Volume _____ Cu. Ft.
Rock Pressure _____ lbs. _____ hrs.
Oil _____ bbls., 1st 24 hrs.
WELL ACIDIZED (DETAILS) _____
WELL FRACTURED (DETAILS) _____

Attach copy of cementing record.
CASING CEMENTED _____ SIZE _____ No. Ft. _____ Date _____
Amount of cement used (bags) _____
Name of Service Co. _____
COAL WAS ENCOUNTERED AT 749 FEET _____ INCHES
_____ FEET _____ INCHES FEET _____ INCHES
_____ FEET _____ INCHES FEET _____ INCHES

RESULT AFTER TREATMENT (Initial open Flow or bbls.) _____
ROCK PRESSURE AFTER TREATMENT _____ HOURS
Fresh Water 1558 Feet Salt Water 2177 Feet
Producing Sand _____ Depth _____

Formation	Color	Hard or Soft	Top	Bottom	Oil, Gas or Water	Depth	Remarks
Top Soil	Brown	S	0	10			
slate	Gray	S	10	25			
sand	Gray	H	25	35			
slate	Dark	S	35	60			
Red Rock	Red	S	60	70			
Lime	Gray	H	70	105			
Red Rock	Red	S	105	110			
Lime	DARK	H	110	175			
Coal	Black	S	175	177			
slate	Dark	S	177	248			
Lime	Gray	H	248	265			
slate	Dark	S	265	270			
Lime	Gray	H	270	303			
sand	Gray	H	303	350			
slate	Dark	S	350	352			
Lime	Dark	H	352	377			
slate	Dark	S	377	385			
Lime	Gray	H	385	405			
slate	Dark	S	405	410			
Lime	Gray	H	410	433			
slate	Dark	S	433	435			
Lime	Gray	H	435	470			
slate	Dark	S	470	475			
Lime	Gray	H	475	514			
slate	Dark	S	514	520			
shale	Green	S	520	540			
Mark Town	Black	S	540	628			



Formation	Color	Hard or Soft	Top //	Bottom	Oil, Gas or Water	Depth Found	Remarks
Slate	Dark	S	628	648			
M.T. coal	Black	S	648	654			
Slate	Dark	S	654	660			
Lime	Gray	H	660	675			
Slate	Dark	S	675	685			
Lime	Gray	H	685	717			
Slate	Dark	S	717	730			
Lime	Gray	H	730	749			
Pgh. Coal	Black	S	749	756	Water		5 bailers
Slate	Dark	S	756	786			
Lime	Gray	H	786	850			
Red Rock	Red	S	850	852			
Lime	Gray	H	852	882			
Red Rock	Red	S	882	887			
Lime	Gray	H	887	900			
Red Rock	Red	S	900	930			
Slate	Dark	S	930	950			
Lime	Gray	H	950	1005			
Red Rock	Red	S	1005	1015			
Lime	Gray	H	1015	1055			
Red Rock	Red	S	1055	1075			
Slate	Dark	S	1075	1100			
Red Rock	Red	S	1100	1123			
Lime	Gray	H	1123	1140			
Slate	Dark	S	1140	1168			
Lime	Gray	H	1168	1183			
Sand	White	H	1183	1193			
Lime Shells	Dark	H	1193	1269			
Sand	White	H	1269	1305			
Slate	Dark	S	1305	1330			
Lime	Gray	H	1330	1376			
Sand	Gray	H	1376	1392			
Slate	Dark	S	1392	1448			
Lime	Gray	H	1448	1460			
Slate	Dark	S	1460	1475			
Lime	Gray	H	1475	1485			
Slate	Dark	S	1485	1506			
Lime	Gray	H	1506	1533			
Slate	Dark	S	1533	1537			
Lime	Gray	H	1537	1558			
Sand	Gray	H	1558	1580			
Slate	Dark	S	1580	1584			
Sand	Gray	H	1584	1640			
Slate	Dark	S	1640	1660			
Sand	Gray	H	1660	1832	Water	1668	Hole Full
Red Rock	Red	S	1832	1843			
Lime	Gray	H	1843	1878			
Red Rock	Red	S	1878	1890			
Lime	Gray	H	1890	1909			
Slate	Dark	S	1909	1913			
Lime	Gray	H	1913	1940			
Slate	Dark	S	1940	1950			
Lime	Gray	H	1950	1965			
Slate	Dark	S	1965	1972			
Lime	Gray	H	1972	1980			
Slate	Dark	S	1980	2044			
Big Lime	Gray	H	2044	2058			
Big Engin Sand	White	H	2058	2233			

Water 2177 4 bailers
Date Nov 15, 1964

APPROVED Yost + Yost Inc, Own

By Rodolphe D. Yost
(T146)