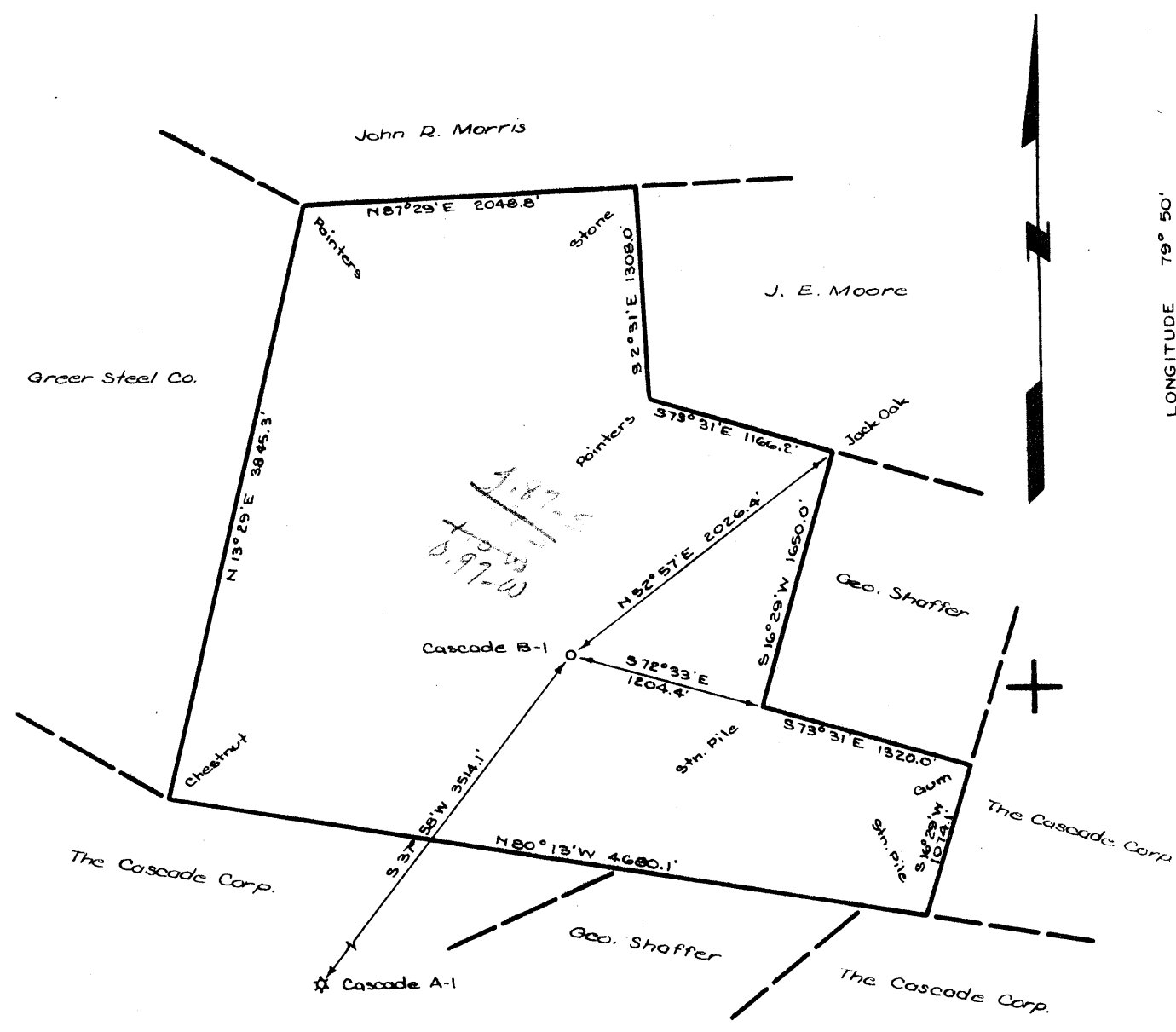


LATITUDE 39° 40'

LONGITUDE 79° 50'



- NEW LOCATION.....
- DRILL DEEPER.....
- ABANDONMENT.....

Edward C. Caswell
 EDWARD C. CASWELL
 Texas Reg. No. 5998

COMPANY PHILLIPS PETROLEUM COMPANY
 ADDRESS BARTLESVILLE, OKLAHOMA
 FARM THE CASCADE CORPORATION
 TRACT 5 ACRES 297.9 LEASE NO. 70087
 WELL (FARM) NO. B-1 SERIAL NO. _____
 ELEVATION (SPIRIT LEVEL) 2034.5
 QUADRANGLE MORGANTOWN C
 COUNTY MONONGALIA DISTRICT MORGAN
 ENGINEER Edward C. Caswell
 ENGINEER'S REGISTRATION NO. 5998-TEXAS
 FILE NO. _____ DRAWING NO. _____
 DATE FEB. 16, 1968 SCALE 1" = 1000'

STATE OF WEST VIRGINIA
 DEPARTMENT OF MINES
 OIL AND GAS DIVISION
 CHARLESTON
 WELL LOCATION MAP
 FILE NO. MON-315

+ DENOTES LOCATION OF WELL ON UNITED STATES TOPOGRAPHIC MAPS, SCALE 1 TO 62,500. LATITUDE AND LONGITUDE LINES BEING REPRESENTED BY BORDER LINES AS SHOWN.
 - DENOTES ONE INCH SPACES ON BORDER LINE OF ORIGINAL TRACING.

Deep Well

Form OG-10



STATE OF WEST VIRGINIA
DEPARTMENT OF MINES
OIL AND GAS DIVISION

Rotary
Spudder
Cable Tools
Storage

Quadrangle Morgantown
Permit No. MON-315

WELL RECORD

Oil or Gas Well Gas
(KIND)

Company Phillips Petroleum
Address Bartlesville, Oklahoma
Farm Cascade "B" Acres 297.9
Location (waters) 4500' W of 79 Deg. 50'; 25,400'
Well No. 1 Elev. 2034.5'
District Morgan County Monongalia
The surface of tract is owned in fee by The Cascade Corpora-
tion Address 280 Spruce Street,
Morgantown, West Virginia
Mineral rights are owned by Same

Casing and Tubing	Used in Drilling	Left in Well	Packers
Size			Kind of Packer
16 48#	Set @:		
13 13 3/8"	50'	33'	(60 Sax) by Halli.
10 9 3/8"	1011.80'	994.60'	(350 Sax) by Halli.
8 1/4			Depth set
6 3/4			
5 3/16	11.60#		
4 1/2 4 1/2"	8055'	8056.09'	(225 Sax) by Halli
3			Perf. top See attach.
2			Perf. bottom ment.
Liners Used			Perf. top 7759
			Perf. bottom 7982

Address Same
Drilling commenced April 9, 1968
Drilling completed May 1, 1968
Date Shot None From To
With
Open Flow /10ths Water in Inch
 /10ths Merc. in Inch
Volume 12,482 MCF/day (CAOFP) Cu. Ft.
Rock Pressure 3425# lbs. 264 hrs.
Oil None bbls., 1st 24 hrs.
WELL ACIDIZED (DETAILS) None - see frac treatment

Attach copy of cementing record.
CASING CEMENTED 4 1/2" SIZE 8056.09' No. Ft. 4/26/68 Date
Amount of cement used (bags) 225 Sax
Name of Service Co. Halliburton
COAL WAS ENCOUNTERED AT None FEET INCHES
FEET INCHES FEET INCHES
FEET INCHES FEET INCHES

WELL FRACTURED (DETAILS) See reverse side

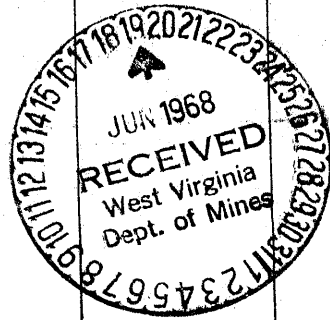
RESULT AFTER TREATMENT (Initial open Flow or bbls.) See gas volume above

ROCK PRESSURE AFTER TREATMENT HOURS
Fresh Water 56' Feet Salt Water Feet
Producing Sand Chert & Oriskany Depth 8055' - PBTD 8027'

Formation	Color	Hard or Soft	Top	Bottom	Oil, Gas or Water	Depth	Remarks
DRILLER'S LOG:							
Surface Soil, Sand Rock, Sand			0'	112'			
Sand & Shale			112'	322'			
Red Rock, Sand			322'	475'			
Sand, Red Rock, Shale			475'	616'			
Sand & Shale			616'	796'			
Sand, Sandy Shale			796'	965'			
Shale & Sand			965'	1018'			
Sand			1018'	1275'			
Sandy Shale, Red Rock			1275'	1570'			
Sand & Shale			1570'	2214'			
Sandy Shale, Sand			2214'	2515'			
Shale & Sand			2515'	3145'			
Sandy Shale			3145'	3330'			
Shale			3330'	4000'			
Sandy Shale			4000'	4585'			
Shale			4585'	7115'			
Shale, Sandy Lime			7115'	7245'			
Shale			7245'	7300'			
Lime			7300'	7322'			
Tully Lime			7322'	7370'			
Lime & Shale			7370'	7525'			
Shale			7525'	7737'			
Onondaga Lime			7737'	7752'			
Chert			7752'	7938'			
Oriskany Sand			7938'	8000'			
Sand, Helderberg Lime			8000'	8055'			
			PBTD	8027'			

GAMMA RAY LOG:

FORMATION:	FROM:	TO:
Big Lime	454'	731'
Weir	767'	878'
50 Foot	1004'	1074'
30 Foot	1087'	1160'
Gordon		
5th Sand	1620'	
Bayard	1724'	1790'
Speechley	2408'	2415'
Riley	3390'	3521'
Benson	3684'	
Tully	7301'	7395'
Onondaga	7733'	7750'
Chert	7750'	7935'
Oriskany	7935'	7989'
Helderberg	7989'	



Formation	Color	Hard or Soft	Top 6	Bottom	Oil, Gas or Water	Depth Found	Remarks
<p><u>FRAC TREATMENT F/ REVERSE SIDE:</u> <u>4/30/68:</u> Halliburton frac treated 4 1/2" csg perforations f/ 7759'-7982' opposite Chert & Oriskany zones w/ 55,000# of 20-40 sand; 57,000 gal. of 3% gelled acid; used 2000# of MG-6 & 300# of CW-1 in treatment - max. treating press. 5050#; min. treat. press. 4450#; displacement 4850#; dropped five perf balls - 40 Bbls/min. inj. rate; hydraulic horsepower used 4681; hydraulic horsepower available 4725; instant SIP 3800#; 5-min. SIP 3500#.</p>							
						315	

Date June 13, 1968

APPROVED E. S. Miles, Owner

By E. S. Miles
 DIST. PROD. SUPT. (Title)