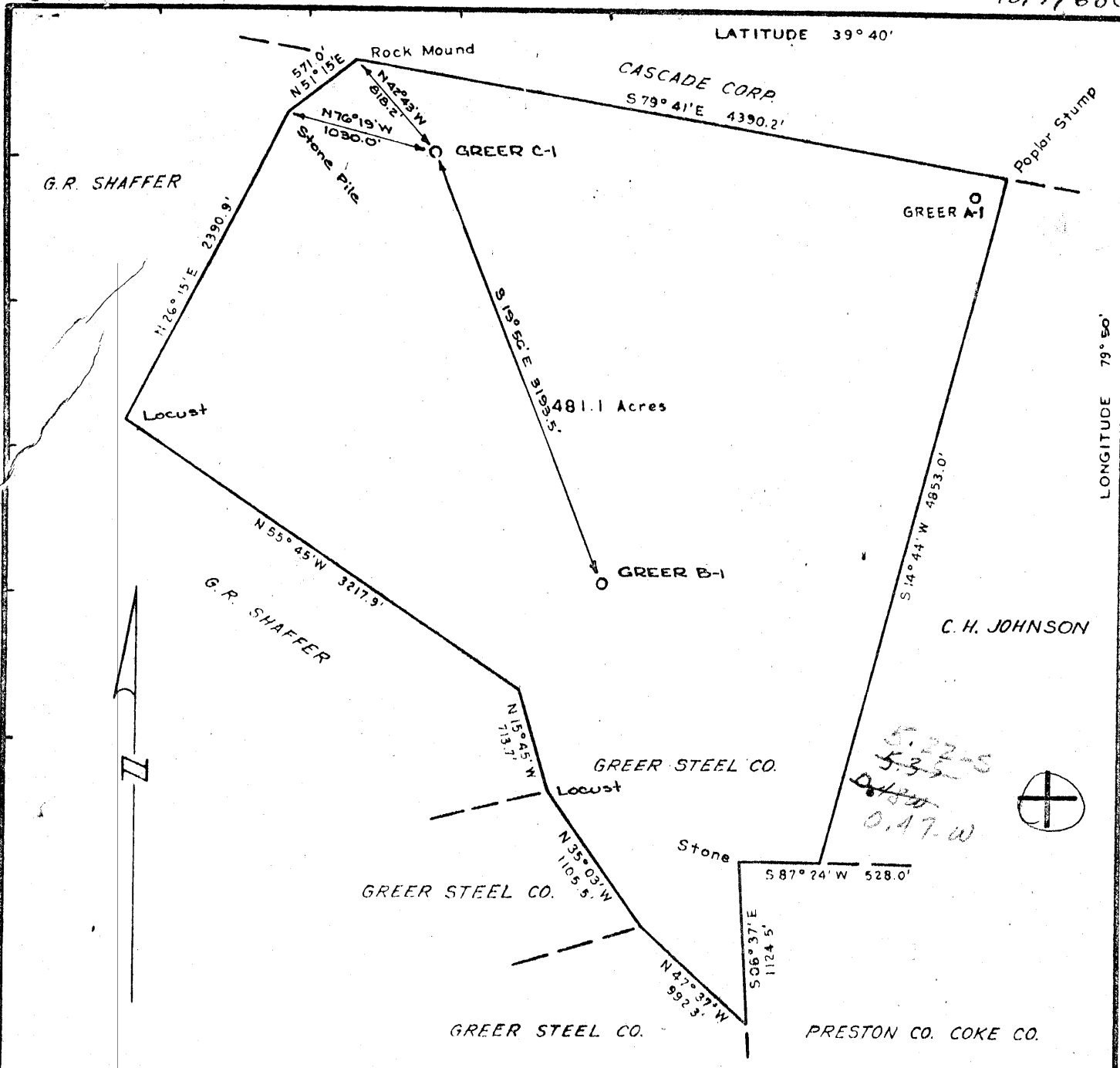


LATITUDE 39° 40'

LONGITUDE 79° 50'



"I, the undersigned, hereby certify that this map is correct to the best of my knowledge and belief and shows all of the information required by Paragraph 5 of the rules and regulations of the Oil and Gas Section of the mining laws of West Virginia."

- NEW LOCATION
- DRILL DEEPER
- ABANDONMENT 1-20-69

Edward C. Caswell
 EDWARD C. CASWELL
 Texas Reg. No. 5998

COMPANY PHILLIPS PETROLEUM COMPANY
 ADDRESS BARTLESVILLE, OKLAHOMA
 FARM GREER STEEL COMPANY
 TRACT 3 ACRES 481.1 LEASE NO. C-70087
 WELL FARM NO. C-1 SERIAL NO. _____
 ELEVATION (SPIRIT LEVEL) 1952.0'
 QUADRANGLE MORGANTOWN
 COUNTY MONONGALIA DISTRICT MORGAN
 ENGINEER Edward C. Caswell
 ENGINEER'S REGISTRATION NO. 5998 - TEXAS
 FILE NO. _____ DRAWING NO. _____
 DATE Sept. 27, 1968 SCALE 1" = 1000'

STATE OF WEST VIRGINIA
 DEPARTMENT OF MINES
 OIL AND GAS DIVISION
 CHARLESTON
 WELL LOCATION MAP
 FILE NO. Mon-320-P

+ DENOTES LOCATION OF WELL ON UNITED STATES TOPOGRAPHIC MAPS, SCALE 1 TO 62,500. LATITUDE AND LONGITUDE LINES BEING REPRESENTED BY BORDER LINES AS SHOWN

- DENOTES ONE INCH SPACES ON BORDER LINE OF ORIGINAL TRACING.

6-0 South Burns Chapel Deep Well (Helderberg) (Oriskany) JAN 26 1969

Orig - State
 1 - Consolidated
 1 - B'ville
 1 - Okla. Cit.
 1 - File



STATE OF WEST VIRGINIA
 DEPARTMENT OF MINES
 OIL AND GAS DIVISION 7

Rotary
 Spudder
 Cable Tools
 Storage
 Oil or Gas Well Non-Commercial P&A (KIND)

Form OG-10

Quadrangle Morgantown
 Permit No. MON-320

WELL RECORD

Company Phillips Petroleum Company
 Address Bartlesville, Oklahoma
 Farm Greer "C" Acres 481.1
 Location (waters) 27,750' S of Lat 39°40' & 2500' W of Long 79°50', Monongalia County, W. Va.
 Well No. 1 Elev. GL 1952'
 District Morgan County Monongalia
 The surface of tract is owned in fee by Greer Steel Company Address Morgantown, W. Va.
 Mineral rights are owned by Same Address _____
 Drilling commenced December 10, 1968
 Drilling completed January 1, 1969
 Date Shot _____ From _____ To _____
 With _____

Casing and Tubing	Used in Drilling	Left in Well	Packers
Size	(RKB) Set at:		GL to RKB 14.40'
13 3/8" OD	50'	32.2'	Kind of Packer (60 sx by Hallib)
10 5/8" 32.3#	1035'	1018.8'	Size of (350 sx by Hallib)
8 1/2" OD	8275'	8267.18'	Depth set (225 sx by Hallib)
6 5/8"			Perf. top (See reverse side)
5 3/16"			Perf. bottom
4 1/2" OD			Perf. top
3"			Perf. bottom
2"			
Liners Used			

Open Flow /10ths Water in _____ Inch
 /10ths Merc. in _____ Inch
 Volume Non-Commercial - P&A Cu. Ft.
 Rock Pressure _____ lbs. _____ hrs.
 Oil _____ bbls., 1st 24 hrs.
 WELL ACIDIZED (DETAILS) See Reverse Side
 WELL FRACTURED (DETAILS) See Reverse Side

Attach copy of cementing record.
 CASING CEMENTED 4 1/2" SIZE 8267' No. Fl. 1-2-69 Date _____
 Amount of cement used (bags) 225
 Name of Service Co. Halliburton Company
 COAL WAS ENCOUNTERED AT _____ FEET _____ INCHES
 _____ FEET _____ INCHES FEET _____ INCHES
 _____ FEET _____ INCHES FEET _____ INCHES

RESULT AFTER TREATMENT (Initial open Flow or bbls.) Non-Commercial
 ROCK PRESSURE AFTER TREATMENT _____ HOURS
 Fresh Water _____ Feet Salt Water _____ Feet
 Producing Sand _____ Depth _____

DRILLER'S LOG: Formation	Color	Hard or Soft	Top	Bottom	Oil, Gas or Water	Depth	Remarks
Surface Soil & Rock			0	50'	Formation	Tops - Per Logs:	
Sand, Red Rock			50'	110'	✓Tulley Lime	-	7193'
Sand, Red Rock, Shale			110'	220'	✓Onondaga Lime	-	7800'
Sand, Shale			220'	390'	✓Onondaga Chert	-	7828'
Sand			390'	500'	✓Oriskany Sand	-	8162'
Sand, Shale			500'	1200'			
Shale			1200'	1535'			
Sandy Shale			1535'	1840'			
Shale			1840'	2710'			
Sandy Shale			2710'	2975'			
Shale			2975'	4735'			
Sandy Shale			4735'	4820'			
Shale			4820'	5025'			
Sandy Shale			5025'	5165'			
Shale			5165'	7194'			
Lime-Tulley			7194'	7251'			
Shale - Hamilton & Marcellus			7251'	7650'			
O. Lime - Onondaga			7650'	7700'			
Shale			7700'	7831'			
Chert			7831'	7865'			
Shale, Chert Helderberg			7865'	8095'			
Chert			8095'	8155'			
O. Sand - Onondaga			8155'	8220'			
Sand, Lime Helderberg			8220'	8275'			
				8275'	Total Depth (RKB)		



Formation	Color	Hard or Soft	Top 7	Bottom	Oil, Gas or Water	Depth Found	Remarks
January, 1969							
4							Ran Schlumberger Logs & perforated 7838-8117' (40 holes). w/55,000# sand & 55,400 gals 3% gelled acid. ISIP 3750#. Frac'd thru perforations to pit to clean up well. 5 min SIP 2400#. Opened
5/6/7/8							Well would not flow. Press'd hole w/gas to blow fluid out of hole. Unable to flow well without blowing w/gas.
9							Pulled tubing. Well flowed some water.
10/11							Killed well w/135' BW. Plugged back w/cement plug 7920-7900'. Schlumberger perforate 7833-7878' (23 holes). Set 2-3/8" tbg at 7891'. Spotted 1000 gals acid over perf.
12							Pulled tubing.
13							Frac'd w/6174# sand & 16,950 gals 3% gelled acid. ISIP 4800#. 5 min SIP 3600#. 4 hour SIP 750#, TP 60#. 2-3/8" tubing set @ 7893'.
14							6 hour SIP 1000#, TP 60#. Press'd well w/gas to blow fluid out of hole.
15							Tested @ 8:30 AM - CP 135#, TP 0# - no flow. Press'd well w/gas @ intervals to blow fluid out of hole. Well would not flow without being press'd w/gas.
16							Well open to pit 13 hrs - would not flow - well dead. Halliburton mixed 35 sx jel, 8.4#, pmpd down tubing & circ hole. Pulled tbg. Schlumberger RU to run CIBP to 7800' to Plug and Abandon hole.
17/18							Set CIBP @ 7800', spotted 2 sx cmt 7800-7778'. Cut 4 1/2" csg off @ 6361', pulled 2 jts & spotted 25 sx cmt 6300-6228'. Pulled 4 1/2" csg to 1047' & spotted 25 sx cmt 1047-983'. Pulled balance of 4 1/2" csg. Ran 60' tbg & spotted 25 sx cmt 50' to top of 9-5/8" csg. Job completed 8 AM, 1-18-69. Well site marker erected 24" x 30" steel plate 4' above ground in middle of cellar. Sign reads "Phillips Petroleum Company, Greer C-1, Plugged 1-18-69." Total 4 1/2" csg recovered - 19 1/4 jts, 6361'.

320

Date January 20, 1969

APPROVED Phillips Petroleum Company, Owner

By W.T. Slife Dist. Supt.
(Title)