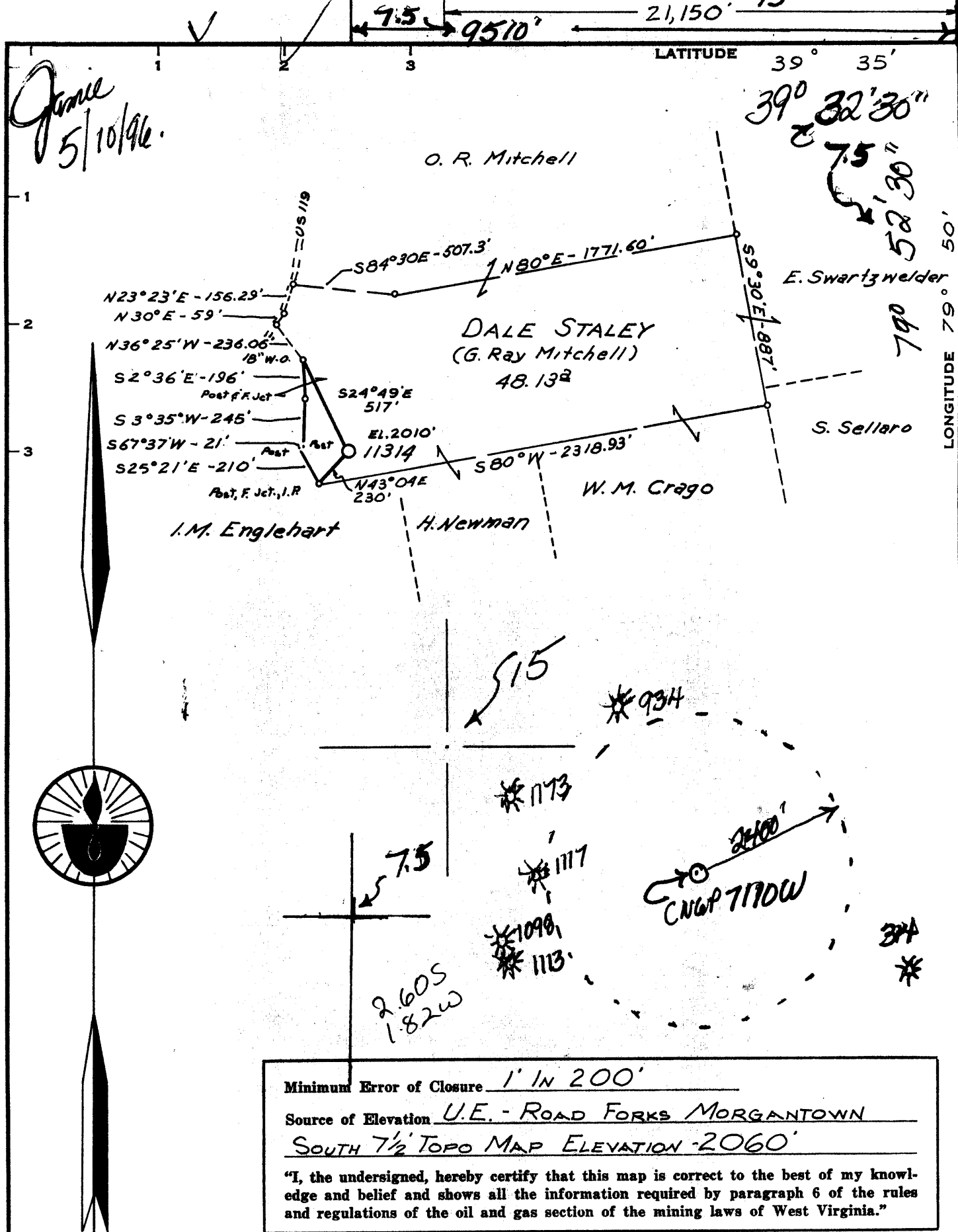


Janice  
5/10/96



Minimum Error of Closure 1' IN 200'  
 Source of Elevation U.E. - ROAD FORKS MORGANTOWN  
SOUTH 7 1/2 TOPO MAP ELEVATION 2060'  
 "I, the undersigned, hereby certify that this map is correct to the best of my knowledge and belief and shows all the information required by paragraph 6 of the rules and regulations of the oil and gas section of the mining laws of West Virginia."

- New Location
- Drill Deeper
- Abandonment

MAP SHEET 932 H-5

UNIT  
 POOLED AREA 639.946<sup>2</sup>  
 FB 1600 Pgs. 18-19

Hope Gas Company P.O. Box 2868-Clarksburg, wva. 26301-	
Farm <u>DALE STALEY</u>	
Tract	Acres <u>48.13</u> Lease No. <u>129360</u>
Well (Farm) No.	Serial No. <u>11314</u>
Elevation (Spirit Level) <u>2010'</u>	
Quadrangle <u>MORGANTOWN 15 Morgantown South</u>	
County <u>MONONGALIA</u> District <u>CLINTON</u>	
Engineer <u>Jackson M. Jarvis</u>	
Engineer's Registration No. <u>2397</u>	
File No.	Drawing No.
Date <u>7-23-71</u>	Scale <u>1" = 660'</u>

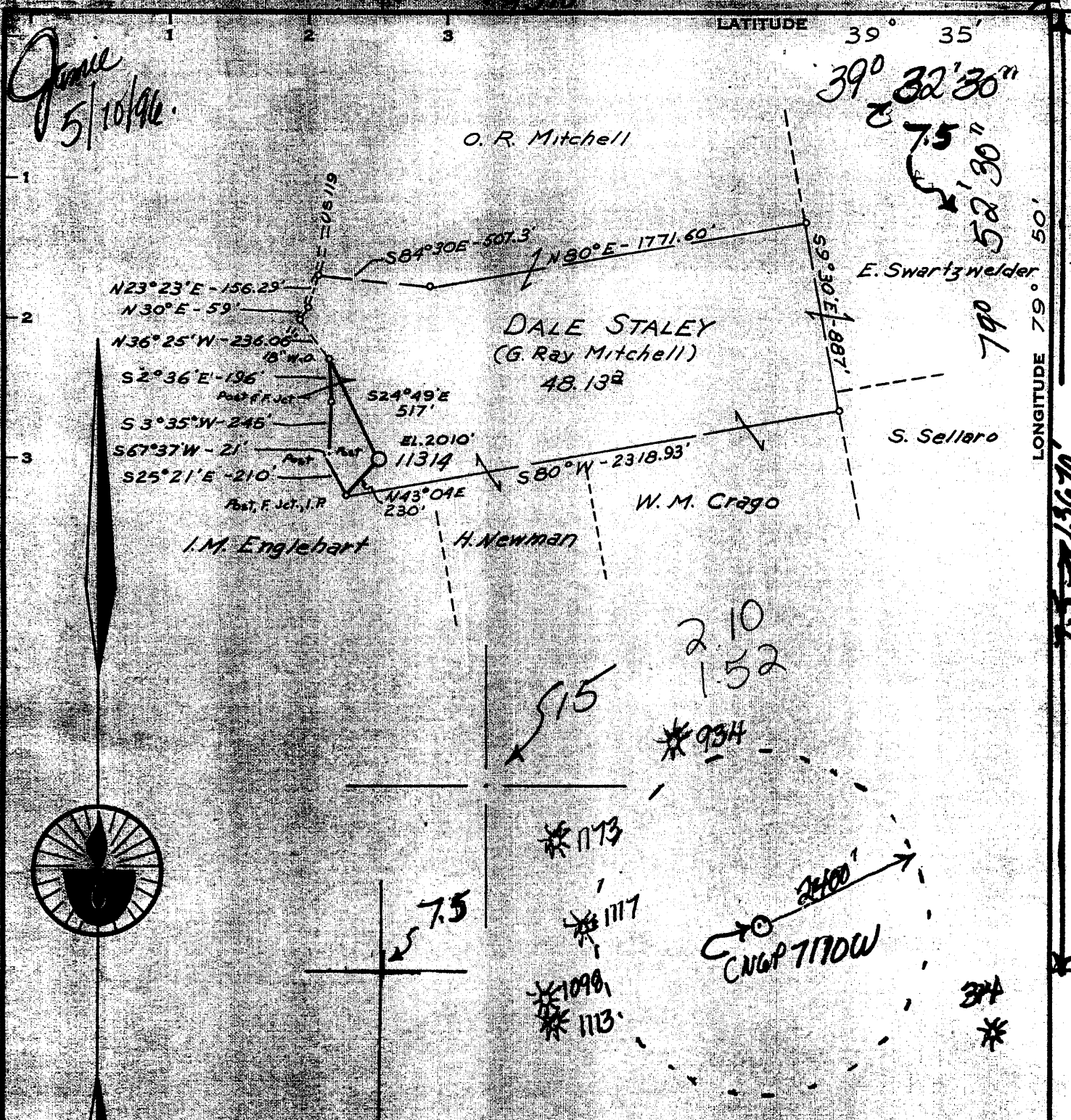
WEST VIRGINIA *Free Canceled*  
 DIVISION OF ENVIRONMENTAL PROTECTION  
 OFFICE OF OIL AND GAS  
 #10 McJUNKIN ROAD  
 NITRO, WEST VIRGINIA 25143-2504

**WELL LOCATION MAP**  
APP Well No. 47-061-003267  
Original TD. 8172' Drilled in 71  
By Consolidated Gas Supply  
Production from Chert. 7740-7933'  
Bot temp plug frac. Spachley, High  
Sand and gravel sand remove plug

DEEP WELL

MONO 0525

June 5/10/96



Minimum Error of Closure 1" IN 200'  
 Source of Elevation U.E. - ROAD FORKS MORGANTOWN  
SOUTH 7 1/2 TOPO MAP ELEVATION 2060'  
 "I, the undersigned, hereby certify that this map is correct to the best of my knowledge and belief and shows all the information required by paragraph 6 of the rules and regulations of the oil and gas section of the mining laws of West Virginia."

- New Location
- Drill Deeper
- Abandonment

MAP SHEET 932 H-5

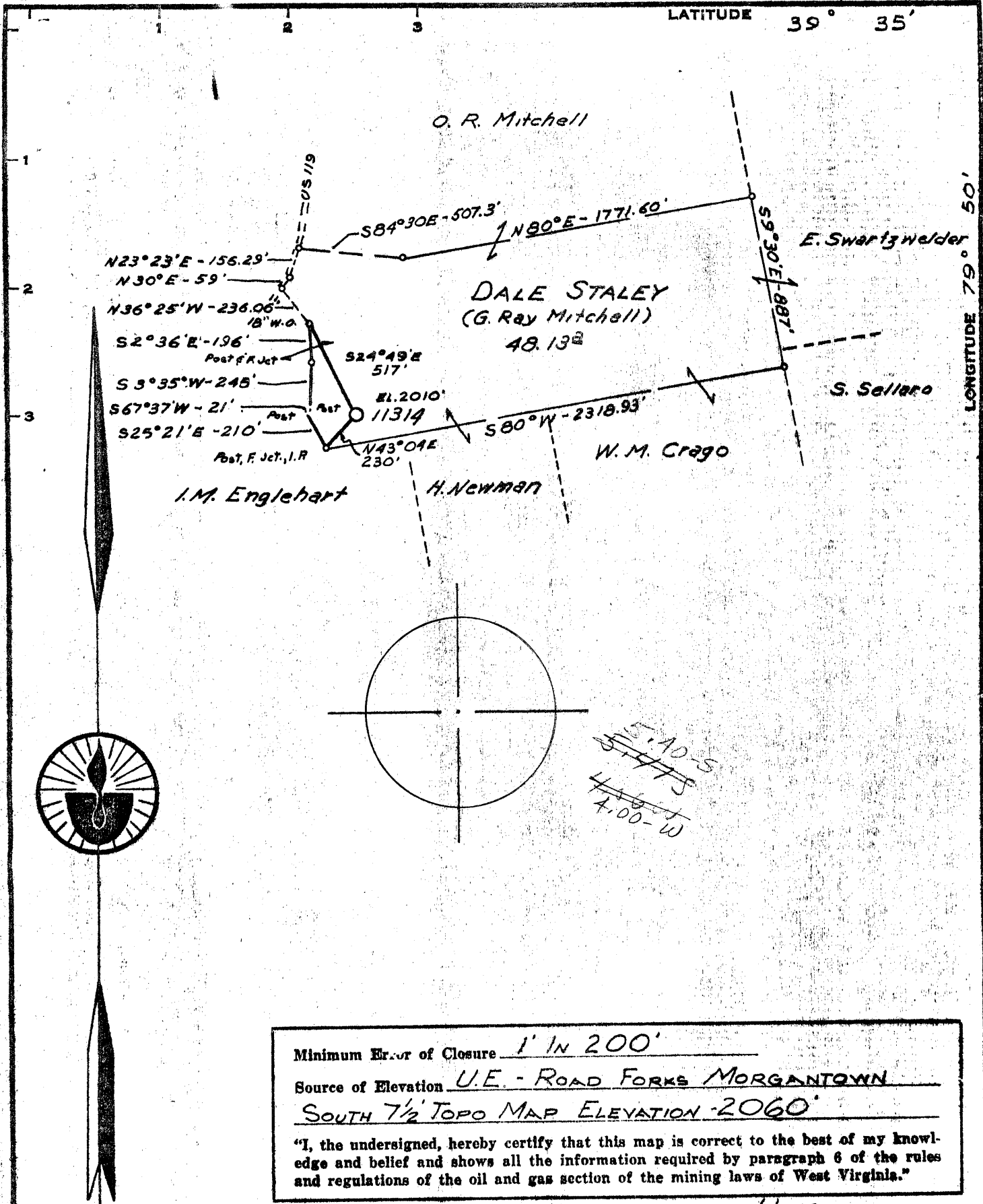
UNIT  
 POOLED AREA 639.946<sup>2</sup>  
 FB 1600 Pgs. 18-19

Hope Gas Company 4107  
 P.O. Box 2868-Clarksburg, wva. 26301-

Farm DALE STALEY  
 Tract Acres 48.13 Tract No. 129360  
 Well (Farm) No. \_\_\_\_\_ Serial No. 11314  
 Elevation (Spirit Level) 2010'  
 Quadrangle MORGANTOWN 15 Morgantown South  
 County MONONGALIA District CLINTON  
 Engineer Jackson M. Jarvis  
 Engineer's Registration No. 2397  
 File No. \_\_\_\_\_ Drawing No. \_\_\_\_\_  
 Date 7-23-71 Scale 1" = 660'

WEST VIRGINIA  
 DIVISION OF ENVIRONMENTAL PROTECTION  
 OFFICE OF OIL AND GAS  
 #10 McJUNKIN ROAD  
 NIRO, WEST VIRGINIA 25143-2504

WELL LOCATION MAP  
Oil Well No. 47-061-003267  
Original TD. 8172' Drilled in 71  
By consolidated Gas Supply  
Production from Chart 7740-7937  
Get temp plug fac. Spachley, High  
Send and fourth hand Remove plug sample



Minimum Error of Closure 1' IN 200'  
 Source of Elevation U.E. - ROAD FORKS MORGANTOWN  
SOUTH 7 1/2' TOPO MAP ELEVATION - 2060'  
 "I, the undersigned, hereby certify that this map is correct to the best of my knowledge and belief and shows all the information required by paragraph 6 of the rules and regulations of the oil and gas section of the mining laws of West Virginia."

New Location   
 Drill Deeper   
 Abandonment

MAP SHEET 932 H-5

UNIT  
 POOLED AREA 639.946<sup>3</sup>  
 FB 1600 Pgs. 18-19

Company CONSOLIDATED GAS SUPPLY CORP  
 Address CLARKSBURG, W. VA  
 Farm DALE STALEY  
 Tract Acres 48.13 Lease No. 129360  
 Well (Farm) No. \_\_\_\_\_ Serial No. 11314  
 Elevation (Spirit Level) 2010'  
 Quadrangle MORGANTOWN S.C.  
 County MONONGALIA District CLINTON  
 Engineer Jackson M. Jarvis  
 Engineer's Registration No. 2397  
 File No. \_\_\_\_\_ Drawing No. \_\_\_\_\_  
 Date 7-23-71 Scale 1" = 660'

STATE OF WEST VIRGINIA  
 DEPARTMENT OF MINES  
 OIL AND GAS DIVISION  
 CHARLESTON

WELL LOCATION MAP  
 FILE NO. Men-326

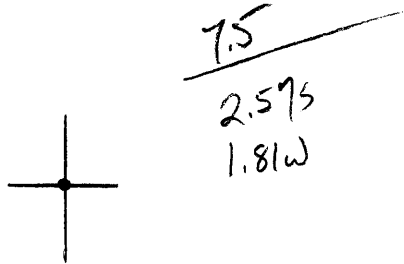
+ Denotes location of well on United States Topographic Maps, scale 1 to 62,500, latitude and longitude lines being represented by border lines as shown.  
 — Denotes one inch spaces on border line of original tracing.

Latitude

39° 32' 30"

79° 52' 30"

Longitude



**Topo Location**

7.5' Loc. \_\_\_\_\_ 15' Loc. \_\_\_\_\_  
 \_\_\_\_\_ (calc.) \_\_\_\_\_

Company \_\_\_\_\_

Farm \_\_\_\_\_

15' Quad \_\_\_\_\_  
(sec.)

7.5' Quad Morgantown South

District Clinton

**WELL LOCATION PLAT**

County 061 Permit 326

WR-35

20-May-96  
API # 47- 61-00326 F

State of West Virginia  
Division of Environmental Protection  
Section of Oil and Gas

RECEIVED  
OFFICE OF OIL AND GAS

Well Operator's Report of Well Work

Farm name: STALEY, DALE & NEVA Operator Well No.: CNGP#71110(11314)

LOCATION: Elevation: 2,010.00 Quadrangle: MORGANTOWN, SOUTH

District: CLINTON County: MONONGALIA  
Latitude: 13670 Feet South of 39 Deg. 32Min. 30 Sec.  
Longitude 9510 Feet West of 79 Deg. 52 Min. 30 Sec.

Company: HOPE GAS, INC.  
P.O. BOX 2868-UNION NAT'L CEN.  
CLARKSBURG, WV 26302-2868

Agent: CALVIN R. MORRISON

Inspector: RANDAL MICK  
Permit Issued: 05/24/96  
Well work Commenced: 03/12/98  
Well work Completed: 04/22/98  
Verbal Plugging  
Permission granted on: \_\_\_\_\_  
Rotary Cable Rig  
Total Depth (feet) \_\_\_\_\_  
Fresh water depths (ft) \_\_\_\_\_

Casing & Tubing Size	Used in Drilling	Left in Well	Cement Fill Up Cu. Ft.
2 3/8" Tbg			
No additional CSG REQUIRED			
Re-Ran Tubing to 7756'			

Salt water depths (ft) \_\_\_\_\_  
Is coal being mined in area (Y/N)? \_\_\_\_\_  
Coal Depths (ft): \_\_\_\_\_

OPEN FLOW DATA

Producing formation Speechey 5th Sand Pay zone depth (ft) 2482-2517 (22)  
4th Sand 1844-1856 (23)  
1688-1700 (24)

Gas: Initial open flow \_\_\_\_\_ MCF/d Oil: Initial open flow \_\_\_\_\_ Bbl/d  
Final open flow 60 MCF/d Final open flow \_\_\_\_\_ Bbl/d  
Time of open flow between initial and final tests \_\_\_\_\_ Hours  
Static rock Pressure \* 380 psig (surface pressure) after 24 Hours  
\* Commingled with existing production.

Second producing formation \_\_\_\_\_ Pay zone depth (ft) \_\_\_\_\_  
Gas: Initial open flow \_\_\_\_\_ MCF/d Oil: Initial open flow \_\_\_\_\_ Bbl/d  
Final open flow \_\_\_\_\_ MCF/d Final open flow \_\_\_\_\_ Bbl/d  
Time of open flow between initial and final tests \_\_\_\_\_ Hours  
Static rock Pressure \_\_\_\_\_ psig (surface pressure) after \_\_\_\_\_ Hours

NOTE: ON BACK OF THIS FORM PUT THE FOLLOWING: 1). DETAILS OF PERFORATED INTERVALS, FRACTURING OR STIMULATING, PHYSICAL CHANGE, ETC. 2). THE WELL LOG WHICH IS A SYSTEMATIC DETAILED GEOLOGICAL RECORD OF ALL FORMATIONS, INCLUDING COAL ENCOUNTERED BY THE WELLBORE.

For: HOPE GAS, INC. *RDJ* *MR*  
By: Rodney J Biggs, Production Manager, Appalachian Region  
Date: 05/07/98

CNGP 7110

03/12/98 PREPARED LOC FOR WORKOVER. MOVED IN SERVICE RIG.  
03/13/98 PULLED 248 JTS. OF 2 3/8" TBG. - 7787.20'.  
03/18/98 KEY ENERGY PERFORATED AND SUPERIOR FRACED AS FOLLOWS:  
SET 2 RETRIEVABLE PLUGS.  
SPEECHLEY, 2482-2517', 22 HOLES, B.D. 3100#, AVG. RATE 19.8,  
AVG. PRESS. 1513#, TOT. BBLs 423, TOT. SAND 35,000#, ISIP 1325#.  
5TH SAND, 1844-1856', 2041-2045', 22 HOLES, B.D. 2500#, AVG. RATE 19.2,  
AVG. PRESS. 2101#, TOT. BBLs 346, TOT. SAND 30,000#, ISIP 1560#.  
4TH SAND, 1688-1700', 24 HOLES, B.D. 3150#, AVG. RATE 19.8,  
AVG. PRESS. 2113#, TOT. BBLs 411, TOT. SAND 35,000#, ISIP 1380#.  
03/30/98 RE-RAN 2 3/8" TBG. - 7756.50'. WELL HAD 185# THIS A.M.  
04/22/98 F.O.F. - 60 MCFD. T.B.I.L.

RECEIVED

JAN 12 1972

Form CG-10



STATE OF WEST VIRGINIA  
DEPARTMENT OF MINES  
OIL AND GAS WELLS DIVISION

OIL & GAS DIV  
DEPT. OF MINES

Rotary  XXXXXX

Spudder

Cable Tools

Storage

Oil or Gas Well  Gas

WELL RECORD

Quadrangle MORGANTOWN  
Permit No. MON-326

Company CONSOLIDATED GAS SUPPLY CORPORATION  
Address Clarksburg, W. Va.  
Farm Gale Staley Acres 48  
Location (waters)  
Well No. 11314 Elev. 2010'  
District Clinton County Monongalia  
The surface of tract is owned in fee by  
Mineral rights are owned by  
Drilling commenced 8-19-71  
Drilling completed 9-20-71  
Date Shot Not shot From To  
With  
Open Flow /10ths Water in. Inch  
/10ths Merc. in. Inch  
Volume 30,000 (Natural) Cu. Ft.  
Rock Pressure 3200 lbs. 7 days hrs.  
Oil None bbls., 1st 24 hrs.  
WELL ACIDIZED (DETAILS) No

Casing and Tubing	Used in Drilling	Left in Well	Packer
Size			Kind of Packer
16		42	
13		42	
9-5/8"	1171	1171	Size of
8 1/4			Depth set
6 5/8			
5 3/16			
4 1/2	8134	8134	Perf. top
3			Perf. bottom
2 syphon	7888	7888	Perf. top
Liners Used			Perf. bottom

Attach copy of cementing record. 9" & 1 1/2" to surface

CASING CEMENTED SIZE No. Ft.  
Amount of cement used (bags) 4 1/2" with 500 bags  
Name of Service Co. Halliburton  
COAL WAS ENCOUNTERED AT 73 FEET 60 INCHES  
FEET INCHES FEET INCHES  
FEET INCHES FEET INCHES

WELL FRACTURED (DETAILS) 10-27-71 With 50,000# sand, 2000 gal 28% acid, 1500 bbl water  
1500# walnut hulls and 1000 HHP

RESULT AFTER TREATMENT (Initial open Flow or bbls.) 3,482 cu ft  
ROCK PRESSURE AFTER TREATMENT 3275# 4008 14 days  
Fresh Water 42' Feet Salt Water None Feet  
Producing Sand Chert Depth 7710-7935'

Formation	Color	Hard or Soft	Top	Bottom	Oil, Gas or Water	Depth	Remarks
Sand & Shale			0	73	Water	42'	Fresh
Coal			73	78			
Sand & Shale			78	350			
Sand & Red Rock			350	570			
Lime			570	2620			
Shale			2620	7330			
Tully			7330	7100			
Shale			7100	7725			
ONONDAGA			7725	7710			
CHERT			7710	7935	Gas	7710-7935'	
ORISKANY-			7935	8020			
TOTAL DEPTH				8172'			

Consolidated Gas Supply Corporation  
115 West Main Street  
Clarksburg, W. Va.

All measurements taken from K.R. 26' above P.L.

JAN 24 1972