

LATITUDE 39° 40' 00"

9



LONGITUDE 80° 07' 30"

7.5 OGIS topo location

7.5' loc 1.24 S 15' loc \_\_\_\_\_  
                  1.61 W (calc.) \_\_\_\_\_

Company \_\_\_\_\_

Farm \_\_\_\_\_

Quad BLACKSVILLE 7 1/2'

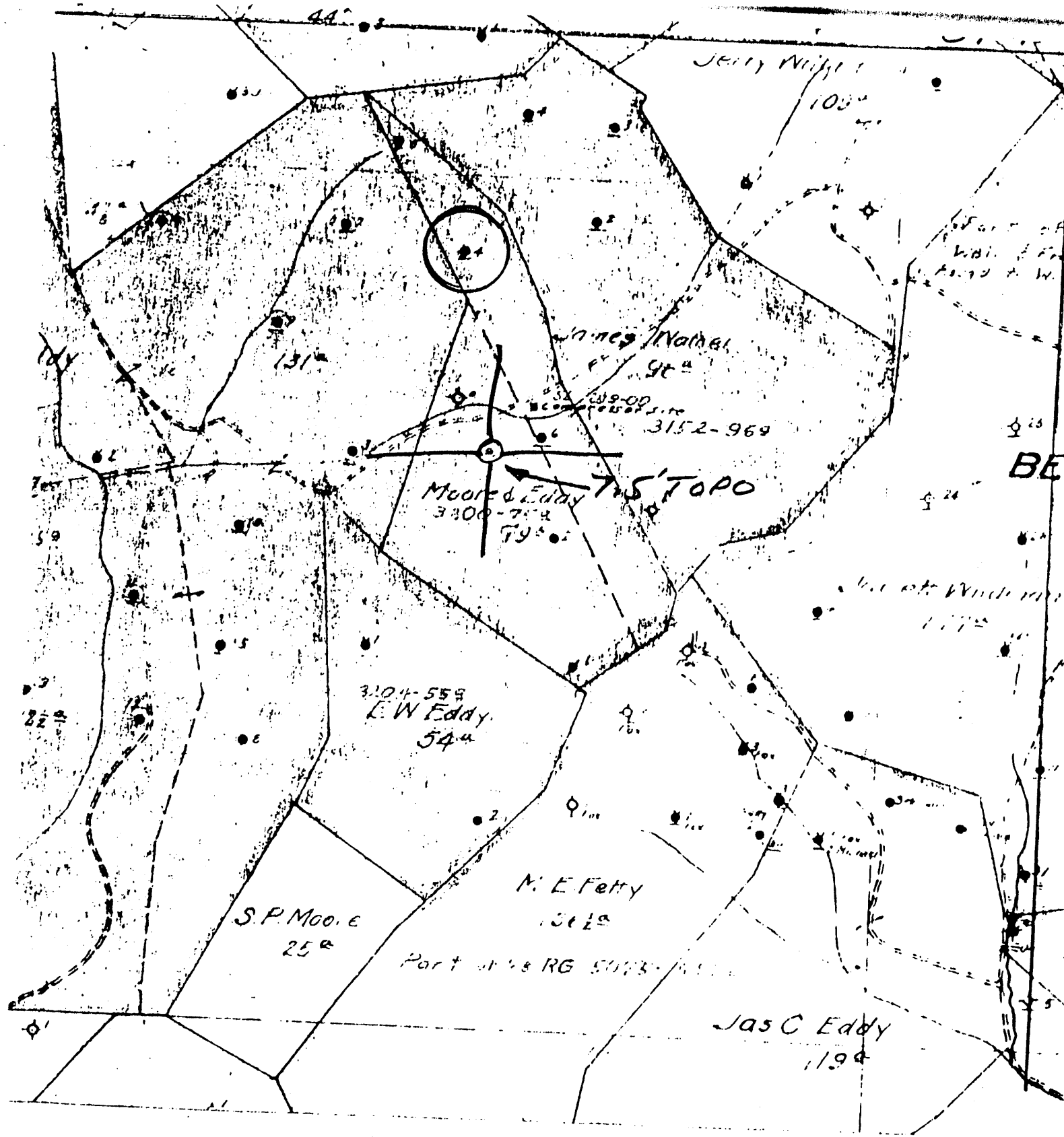
County MONONGALIA

District CLAY

(Elev. 1390± (topo))

WELL LOCATION MAP


File No. 061-0505



(+) DENOTES LOCATION OF WELL ON UNITED STATES TOPOGRAPHIC MAPS

FORM IV-6 (8-78)

N72E N13 E26



STATE OF WEST VIRGINIA  
DEPARTMENT OF MINES  
OIL AND GAS DIVISION

DATE 1-24-1979

OPERATOR'S WELL NO. 4

API WELL NO. 47-061-0505

STATE COUNTY PERMIT

WELL TYPE: OIL  GAS  LIQUID INJECTION  WASTE DISPOSAL

(IF "GAS", PRODUCTION  STORAGE  DEEP  SHALLOW

LOCATION: ELEVATION \_\_\_\_\_ WATER SHED JAKES RUN

DISTRICT CLAY COUNTY MONONGALIA

QUADRANGLE BLACKSVILLE 7.5'

SURFACE OWNER \_\_\_\_\_

OIL & GAS ROYALTY OWNER \_\_\_\_\_ ACREAGE \_\_\_\_\_

PROPOSED WORK: DRILL  CONVERT  DRILL DEEPER  REDRILL  FRACTURE OR STIMULATE  PLUS OFF OLD FORMATION  PERFORATE NEW FORMATION  OTHER PHYSICAL CHANGE IN WELL (SPECIFY) \_\_\_\_\_

LEASE NO. \_\_\_\_\_ LEASE ACREAGE \_\_\_\_\_

PLUG AND ABANDON  CLEAN OUT AND REPLUG

TARGET FORMATION \_\_\_\_\_ ESTIMATED DEPTH \_\_\_\_\_

WELL OPERATOR Pennzoil Company ADDRESS P. O. Box 1588 Parkersburg, WV 26101

DESIGNATED AGENT James A. Crews ADDRESS P. O. Box 1588 Parkersburg, WV 26101

Moore & Eddy - 4

**SOUTH PENN OIL COMPANY—COMPLETION**

SERIAL NO. \_\_\_\_\_ FARM Moore & Eddy  
 ELEVATION \_\_\_\_\_ N. 13-14 E. \_\_\_\_\_ 26 W. \_\_\_\_\_  
 LEASE NO. \_\_\_\_\_ ACRES 79  
 WATERS OF Jakes Run  
 DISTRICT Clay COUNTY Monongalia STATE W. Va.  
 DRILLING COMMENCED No date COMPLETED 12/16/1892 DEPTH 2273

SANDS	TOP	BOTTOM	ELEV. TOP	DEPTH	CASING USED
POB. COAL (MEMPHIS)	865				
Big Injun	2160			10"	900
1st pay	2248			8 1/2"	771
				6 5/8"	1925
				5 3/16"	270

INITIAL PROD. 200 started off at SAND Big Injun DEPTH 2248  
 GAS TEST No  
 SHOT 8 QUARTS 3 to 40

REMARKS (Not drilled through Big Injun)  
 REPORTED BY [Signature] ABANDONED \_\_\_\_\_

47-061-0505