

LATITUDE 39°40'00"

11 05' 21.00"

LONGITUDE

75'  
592

7'5 OGIS topo location

7.5' loc	<u>1.475</u>	15' loc	<u>1.475</u>
	<u>1.41W</u>	(calc.)	<u>3.83W</u>

Company \_\_\_\_\_

Farm \_\_\_\_\_

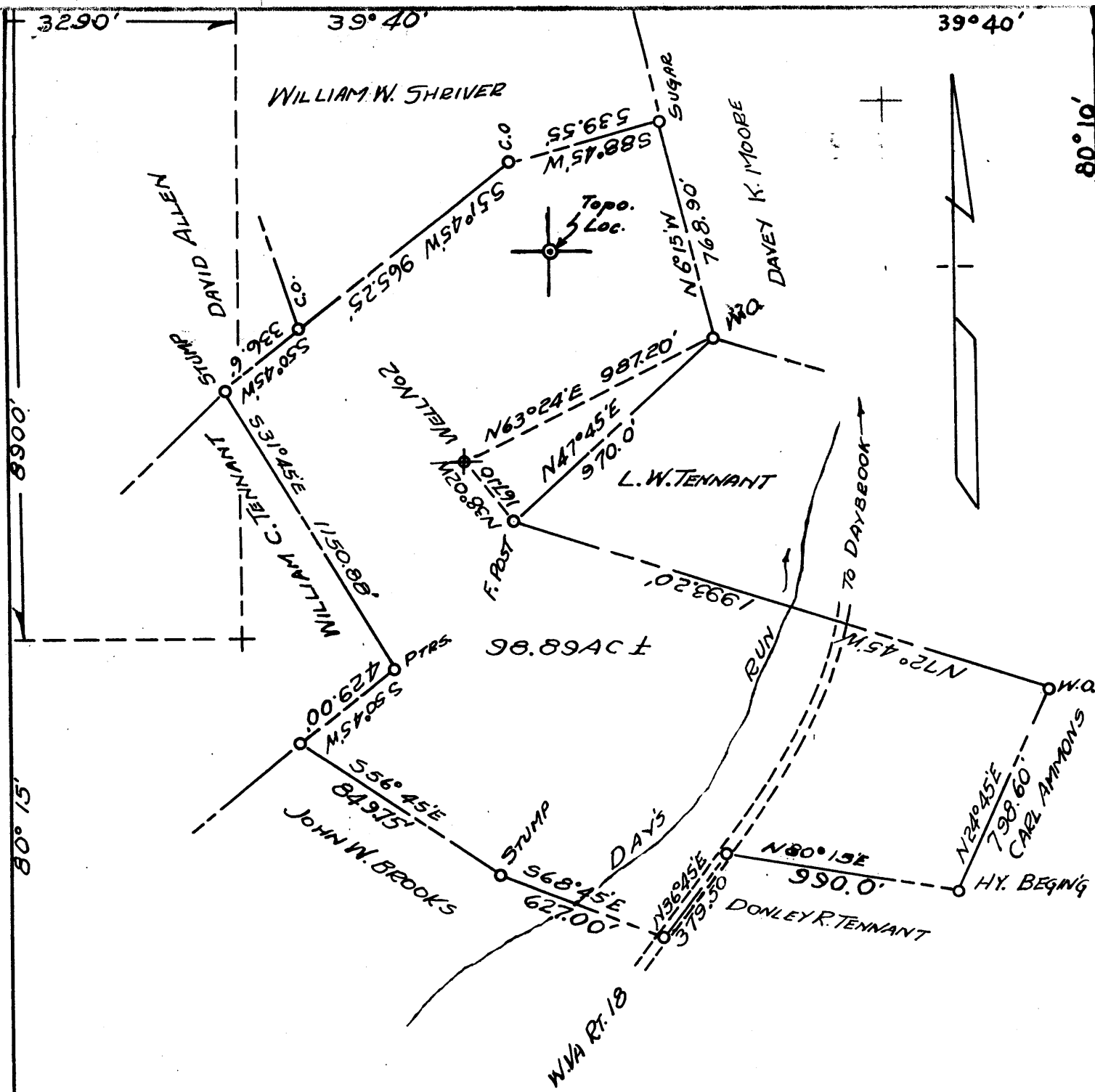
Quad Blacksville WC

County Monongalia

District Clay

WELL LOCATION MAP

File No. 061-592



I THE UNDERSIGNED HEREBY CERTIFY THAT THIS MAP IS CORRECT TO THE BEST OF MY KNOWLEDGE AND BELIEF AND SHOWS ALL OF THE INFORMATION REQUIRED BY PARAGRAPH 6 OF THE RULES AND REGULATIONS OF THE OIL AND GAS SECTION OF THE MINING LAWS OF WEST VIRGINIA

*Carl A. Schimmel*

SURFACE-WILLIAM C. TENNANT

COAL-EASTERN ASSOCIATION COAL CORR

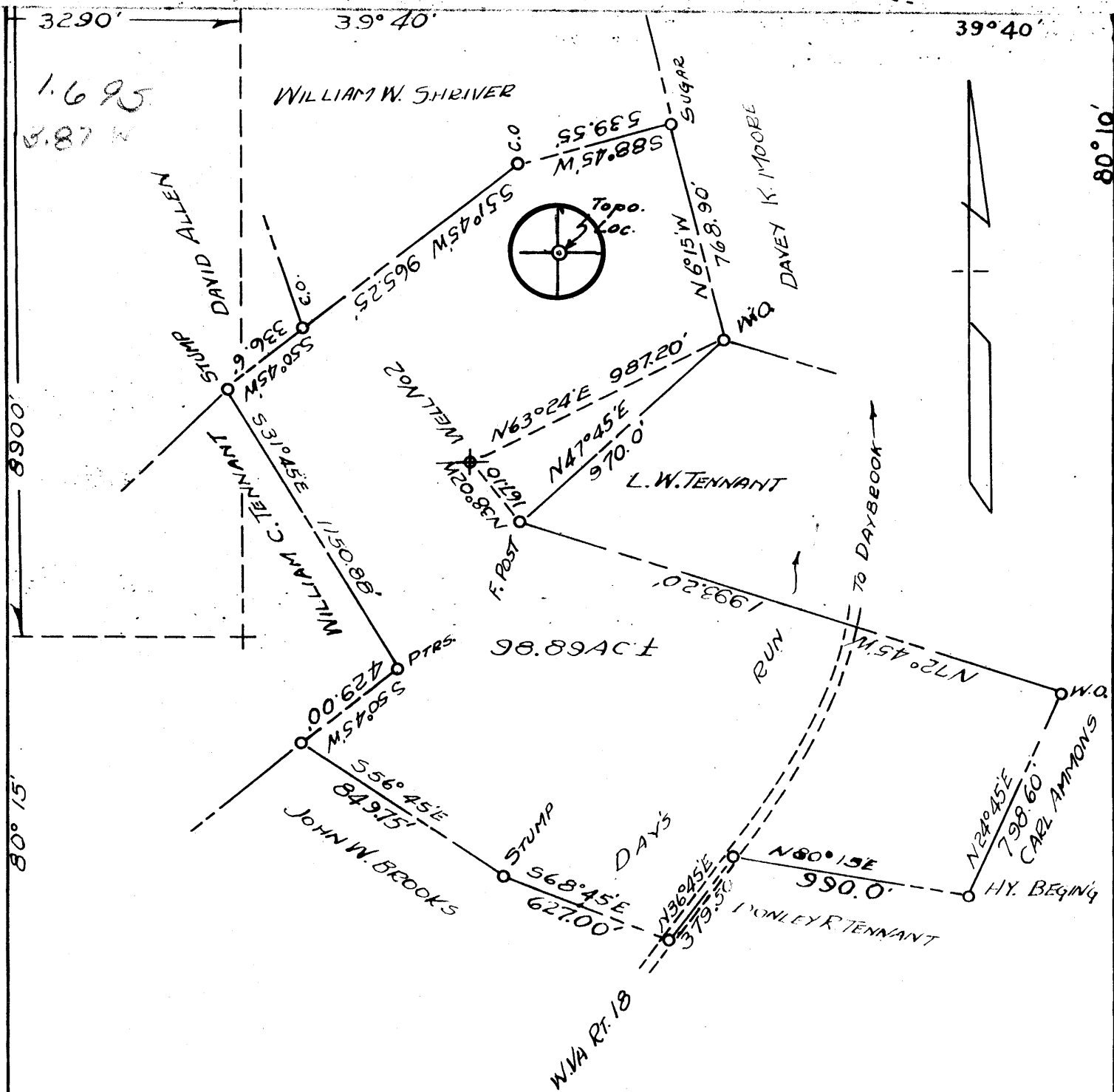
- FRACURE
- NEW LOCATION
- DRILL DEEPER
- ABANDONMENT  issued 8/22/74 - Canceled

MINIMUM ERROR OF CLOSURE 1' IN 200'  
 ELEVATION FROM ELEVATIONS SHOWN ON TOPOG. SHEET.

COMPANY Bill Galbus  
 ADDRESS 1235 Greenbriar Rd. Fairmont, W.Va. 26554  
 FARM (D.L. AMMONS) Wm. C. Tennant  
 TRACT NO.        ACRES 96.89 LEASE NO.         
 WELL NO. 2 SERIAL NO.         
 ELEVATION (SPIRIT LEVEL) 1237.4'  
 QUADRANGLE BLACKSVILLE, W.VA-PA. NW/4  
 COUNTY MONONGALIA District Clay  
 ENGINEER CARL A. SCHIMMEL  
 ENGINEERS REGISTRATION NO. 415  
 FILE NO.        DRAWER NO.         
 DATE 7-31-74 SCALE 1"=500'

STATE OF WEST VIRGINIA  
 DEPARTMENT OF MINES  
 OIL AND GAS DIVISION  
 WELL LOCATION MAP  
 FILE No. Mon-592  
 Formerly MON-703-A  
 \* DENOTES LOCATION OF WELL ON UNITED STATES TOPOGRAPHIC MAPS, SCALE 1 TO 24000 LATITUDE AND LONGITUDE LINES BEING REPRESENTED BY BORDER LINES AS SHOWN

47-061



I THE UNDERSIGNED HEREBY CERTIFY THAT THIS MAP IS CORRECT TO THE BEST OF MY KNOWLEDGE AND BELIEF AND SHOWS ALL OF THE INFORMATION REQUIRED BY PARAGRAPH 6 OF THE RULES AND REGULATIONS OF THE OIL AND GAS SECTION OF THE MINING LAWS OF WEST VIRGINIA

*Carl A. Schimmel*

SURFACE - WILLIAM C. TENNANT

COAL - EASTERN ASSOCIATION COAL CORR

- FRACTURE
- NEW LOCATION
- DRILL DEEPER
- ABANDONMENT  issued 8/22/74

MINIMUM ERROR OF CLOSURE 1' IN 200'  
ELEVATION FROM ELEVATIONS SHOWN ON TOPOG. SHEET.

COMPANY JOHN LAWLIS  
 ADDRESS MANNINGTON W.VA.  
 FARM (D.L. AMMONS) Wm. C. Tennant  
 TRACT NO. ACRES 96.89 LEASE NO.       
 WELL NO. 2 SERIAL NO.       
 ELEVATION (SPIRIT LEVEL) 1237.4' WC  
 QUADRANGLE BLACKSVILLE, W.VA-PA. NW 1/4  
 COUNTY MONONGALIA District - Clay  
 ENGINEER CARL A. SCHIMMEL  
 ENGINEERS REGISTRATION NO. 415  
 FILE NO.      DRAWER NO.       
 DATE 7-31-74 SCALE 1" = 500'

STATE OF WEST VIRGINIA  
 DEPARTMENT OF MINES  
 OIL AND GAS DIVISION  
 WELL LOCATION MAP  
 FILE NO. Mon-703A  
 Now: 592  
 \* DENOTES LOCATION OF WELL ON UNITED STATES TOPOGRAPHIC MAPS, SCALE 1 TO 24000  
 LATITUDE AND LONGITUDE LINES BEING REPRESENTED BY BORDER LINES AS SHOWN

47-061 SEP 11 1974