

Latitude 39°37'30"

80°07'30"

Longitude

75'
+

Topo Location

7.5' Loc. 2.40S 15' Loc. 5.28S
0.29W (calc.) 2.51W

Company _____

Farm Arnett + Glasscock

15' Quad Blacksville C
(sec.)

7.5' Quad GRANT TOWN

District GRANT

WELL LOCATION PLAT

061

County ~~07~~ Permit 1142

THE OWENS BOTTLE COMPANY

250 API WELL NO. 47-049-08

Serial Well No. 68 Lease No. Elevation

RECORD OF WELL No. 1 on the				Conductor, Casing and Tubing				GAS W. L.	
Asnett & Glasscock Tract of 60 Acres				CONDUCTOR	SIZE	NO. OF JOISTS	USED IN DRILLING	LEFT IN WELL	INITIAL OPEN FLOW
in Grant District				CONDUCTOR	18"				5 1/2 S&M 17,000 cubic feet
Montgomery County, State of W. Va.				CASING	10"	28	509'5"	509'	CLOSED IN PRESSURE
Rig Commenced									2" tubing 8' 8" Head - Casing 8 x 2 Lead
Rig Completed					8 1/4"	60	1200'	None	1 Min. 106 5 Pounds
Drilling Commenced October 4th, 1924					6 1/2"	69	1856'	1856'	2 Min. 170 7 Pounds
Drilling Completed January 12th, 1925					5 3/16"				3 Min. 225 8 Pounds
Drilling to cost per foot				TUBING	3"				4 Min. 270 9 Pounds
Contractor is:					2"	158	2921'	2921'	5 Min. 300 10 Pounds
Address:				Packer	6 5/8 x 2 x 16"	Hooper			10 Min. 375 Pounds
The Owens Bottle Company, String # 1				API	Combination Anchor & Ball				24 Hours 400 100 Pounds
Drillers' Names C. W. Riggs				Set:	2917 ft. from top				1/19 to 1/20/25 Pounds
Russell Michael				Shot	19				OIL WELL
Well Abandoned and plugged									INITIAL PRODUCTION
									Oil flowed barrels
									Oil pumped barrels

DRILLER'S RECORD

FORMATION	Top	Bottom	Thickness	REMARKS	
Clay	0	10	10	<div style="border: 2px solid black; padding: 5px; display: inline-block;"> <p>RECEIVED DEC 14 1987</p> </div> <p>DIVISION OF OIL & GAS DEPARTMENT OF ENERGY</p>	
Sand	10	17	7		
Clay	17	22	4		
Hard lime	22	30	9		
Dark slate	30	51	21		
Lime	51	73	22		
Dark slate	73	91	18		
Coal	91	94	3		
Hard lime	94	109	15		Water: 96 ft. - 40 barrels per hour
Slate	109	127	18		Raised to 85 ft. from top.
Hard lime	127	156	28	Water: 156 ft. Hole full	
Fairview coal	156	160	4		
Dark slate	160	176	16		
Hard lime	176	218	42		
Slate	218	242	24		
Hard lime	242	297	55		
Dark slate	297	321	24		
Hard lime	321	397	76		
Dark slate	397	411	14		
Hard lime	411	425	14		
Dark slate	425	442	17		
Mapleton coal	442	448	6		
Hard lime	448	510	62		
Dark slate	510	536	26		
Pittsburgh coal	536	538	2	Coal counted 50' above and 50' below.	
Hard lime	538	593	55	30 Sacks Cement, 60 Sacks Sand 11/19/24.	
Dark slate	593	631	38	10" casing set 593' - 3"	
Murphy sand	631	644	13		
Slate and shells	644	787	143		
Hard sand	787	882	95		

061-1142-2

0036 0657

FORMATION	TOP	BOTTOM	THICKNESS	REMARKS	DATE
White slate	829	907	78		
Little dark sand	907	945	38		
Slate and lime	945	1094	149		
Big dark sand	1094	1116	22		
Gas sand	1116	1352	236	Show gas only 1352 - 1355' Not tested	
First salt sand	1352	1425	73	8 1/2" casing set 1200' - Pulled	
Slate	1425	1440	15		
Second salt sand	1440	1616	176	Water: 1530 ft. 4 barrels per hour	
Red rock	1616	1712	96	Water level 600'	
Sand	1712	1740	28		
Red rock	1740	1770	30		
Little lime	1770	1800	30		
Pencil core	1800	1806	6		
Big lime	1806	1887	81	6 5/8" casing set 1856'	
Injun sand	1887	2025	138	Gas: 1915 - 1920' - 2/10 water in 2" - 742	
Slate and shells	2025	2053	28	Blow down to 2/10 water in 1"	
Merica sand	2053	2135	82	Gas: 1905 - 1930' - increased to 7/10	
Slate and shells	2135	2217	82	water in 2" - 129,000 cu. ft.	
Hard lime	2217	2247	30	Blow down to 4/10 water in 2" - 106,000	
Slate and shells	2247	2372	125	cu. ft. when tubed.	
Gentle sand	2372	2413	41		
Fifty feet sand	2413	2486	73	<u>Injun Gas Minute Readings</u>	
Red rock	2486	2490	4	1 minute 5 #	
Sand shells and slate	2490	2547	57	2 " 7 "	
Thirty feet sand	2547	2593	46	3 " 8 "	
Slate and shells	2593	2679	86	4 " 9 "	
Gordon stray	2679	2690	11	5 " 10 "	
Slate and shells	2690	2730	40	24 hour rock pressure 100 # 1/19 to	
Gordon sand	2730	2749	19	1/20/25	
Slate and lime shells	2749	2837	88		
Fourth sand	2837	2864	27	Perforation set 2921' from top	
White slate	2864	2914	50	2" tubing set 2921'	
Fifth sand	2914	2980	66	Gas: 2920 - 2934' - 5/10 water in	
Total depth	2980	2980		6 5/8" casing. When tubed tested	
				26/10 mercury in 2" - 991,000 cu. ft.	
				Original test 1,225,000 cu. ft.	

2922'
 2864'
 58'
 061-1142-N

RECEIVED
 DEC 14 1987

DIVISION OF OIL & GAS
 DEPARTMENT OF ENERGY

THE OWENS BOTTLE COMPANY, GAS DEPARTMENT

Elevation _____ Lease No. **280** Serial Well No. **88**

RECORD OF WELL No. **3** on the **Glascock & Arnett** Tract of **80** ac
 in **Grant** District of **Missouri** County, State of **Mo.**

Commenced Rigging Up _____ Commenced Drilling **August 7-12-30** Completed Drilling **7-25-30**
 Well Completed **7-25-30** Commenced Producing _____ Abandoned _____

Drilled by **Owens-Illinois Glass Company, Gas Department**
 Drillers' Names: **John Ginkel & Joseph Fleming**

Conductor, Casing and Tubing				PACKER:	CLOSED IN PRESSURES	
Conductor	Size	No. of Joints	Left in Well		CASING HEAD	CASING PRESSURE & 5/8"
Casing	13"				1 Min.	19 Pounds
"	10"				2 Min.	21
"	8 3/4"				3 Min.	23
"	8"				4 Min.	25
"	6 3/4"				5 Min.	27
"	3-16"				10 Min.	34
Tubing	3"				24 Hours	100
"	2"	156	2921	Form	WELL	5/5 to 5/5/30

Shot **7-12-30** with **56** qts. Shell from **2927** to **2948**
 Open flow before shot **50** M. Cu. Ft. 15 Min. after shot **46** M. Cu. Ft. **4** hours after shot **394** M

OIL WELL flowing barrels pumping barrels
 GAS WELL Open flow M. Cu. Ft. M. Cu. Ft. Total **366** M. Cu.

DRILLER'S RECORD

FORMATION	Top	Bottom	Thickness	REMARKS
Former total depth		2930		Steel line measurement run at 2944' found hole off 14' short. Former record listed depth as 2930'
<u>Drilling Log</u>				
Correct total depth		2944		
Sand (5th) medium white	2944	2956	12	
" " hard dark	2956	2974	18	6 5/8"x2"x16" Hester combination back wall and anchor packer & 2" perforation drilled up. Unable to remove from hole
Slate medium	2974	2978	4	
Total depth		2978		
				7/12/30 test of gas before shot 12/10 water through 1" - 59 M
				Test 4 hours after shot 58/10 W. 2" - 394 M
				" 48 " " " 46/10 " " - 348 M
				Tested 7/18/30 - Test 31/10 W. 2" - 291 M
				" 7/21/30 - " 21/10 " " - 291 M
				" 7/23/30 - " 22/10 " " - 261 M
				" 7/25/30 - " 22/10 " " - 246 M

2921
2922
 061-1142-N

Sept. 1935 cemented to depth 2922'

RECEIVED
 DEC 14 1987
 DIVISION OF OIL & GAS
 DEPARTMENT OF ENERGY

0036 0659

INSTRUCTIONS

- 1) Attach a photo copy of the location of the well on a 7.5 minute Quadrangle with the corresponding Longitude and Latitude.
- 2) Designate the location of the well with the symbol(+).

I, the undersigned, Hereby certify that this plat is correct to the best of my knowledge and belief.

Don Toothman

SIGNED Don Toothman

TITLE Foreman

DATE October 21, 1987

OPERATORS WELL NO. 65

API WELL NO. ~~47-049-0857~~

STATE OF WEST VIRGINIA
DEPARTMENT OF ENERGY
OIL AND GAS DIVISION

061-1142-N

WELL TYPE: OIL GAS LIQUID INJECTION WASTE DISPOSAL
(If "GAS" PRODUCTION STORAGE DEEP SHALLOW

LOCATION: ELEVATION _____ WATER SHED _____
DISTRICT Grant COUNTY Marion
QUADRANGLE _____

SURFACE OWNER _____ ACREAGE _____

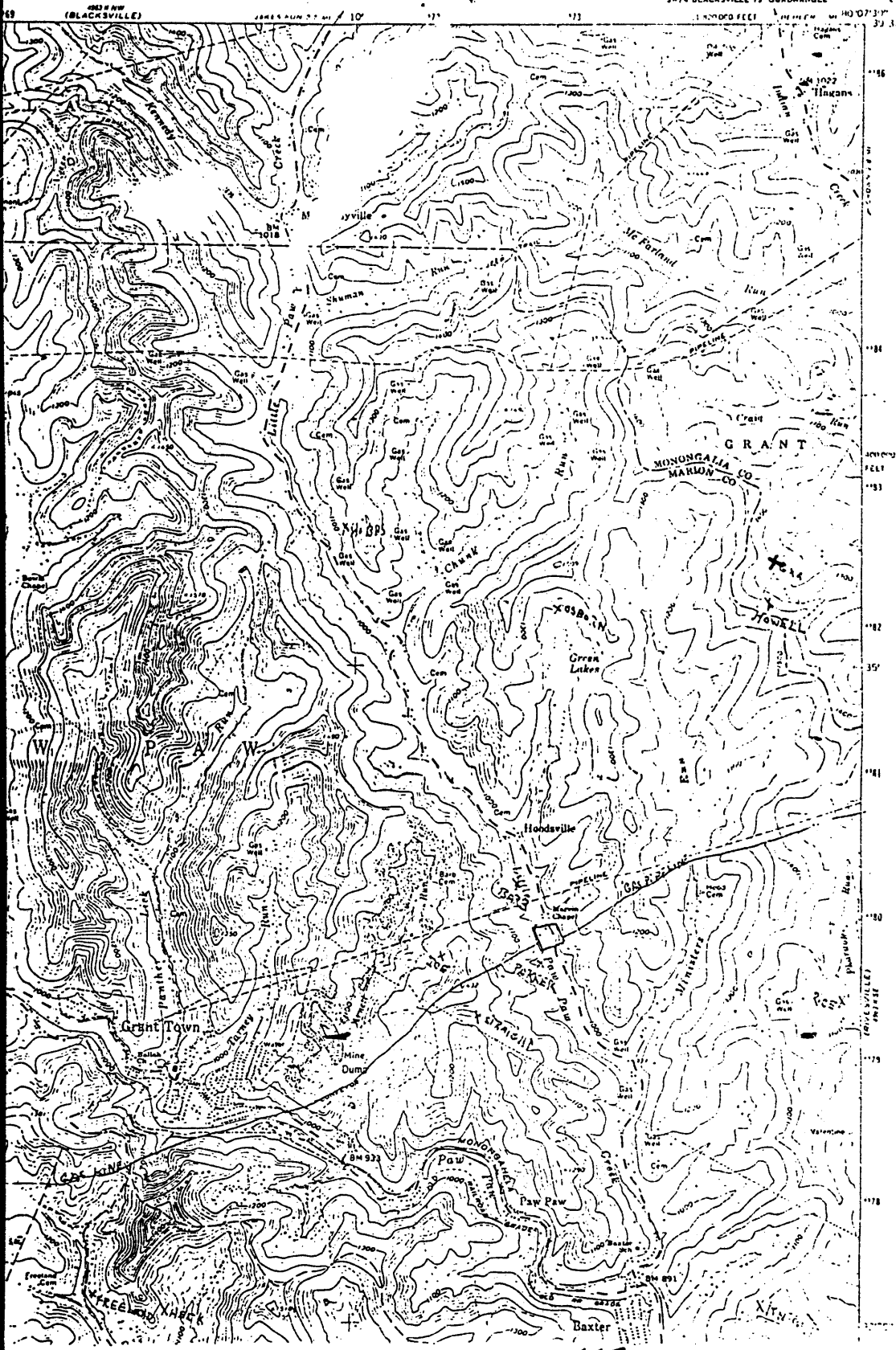
OIL & GAS ROYALTY OWNER Martha Hendricks LEASE ACREAGE 60
LEASE NO. 250

PRODUCING FORMATION Fifth sand TOTAL DEPTH 2930

WELL OPERATOR Owens-Illinois, Inc DESIGNATED AGENT Don G. Gathers

ADDRESS 151 Grand Avenue ADD-
Clarion, PA 16214
Joe Ammons, Agent
P.O. Box 555
Revesville, WV. 26588

0036 0654



47-049-0857
061-1142-N

0036 0656

TABLE 5

Marion Co. (049)

PERMITS TO DRILL AND WELLS COMPLETED, 19 87

(SUPPLEMENT SHEET)

PERMIT NUMBER	WELL OPERATOR	FARM	WELL NUMBER	ELEV.	DISTRICT	TOTAL DEPTH	OIL-GAS DRY	DATE ISSUED	DATE COMPLETED	INITIAL OPER. FLOW GAS - Cu. f OIL - bbls
838	(Formerly: 961-A) Energy Exploration, Inc.	Scott & O.G. Arnett	1	1136.62'	Mannington	3022'	Oil	4-23-87	12-29-29	2 bbl.
839	(Formerly: 049-963-A) Energy Exploration, Inc.	Jackson D. Jones	1	1374.56'	Mannington	3237'	Gas	4-23-87	9-1-17	5,000
840	(Formerly: 049-976-A) Pennzoil Company	Charles Nelson Wagner	1	1167.75'	Mannington	3104'	Gas	4-23-87	6-13-25	18,000
843	Owens-Illinois, Inc. (362cc)	Mrs. Myrtle Ferrier	8		Paw Paw	2912'	Gas	12-4-87		
844	"	Toothman	10		Lincoln	2950'	Gas	12-4-87		
845	"	Roxie Lough	12		Lincoln	2877'	Gas	12-4-87		
846	"	Henry F. Yarish	18		Lincoln	2985'	Gas	12-4-87		
847	"	Straight	20		Paw Paw	2980'	Gas	12-4-87		
848	"	Charles T. Braff	27		Paw Paw	2329'	Gas	12-4-87		
849	"	Howard Monor Ice	32		Lincoln	3014'	Gas	12-4-87		
850	"	Howell	36		Paw Paw	2250'	Gas	12-4-87		
851	"	General Conference of 7 Day Adventist	38		Lincoln	2924'	Gas	12-4-87		
852	"	John R. Coogle	49		Paw Paw	2523'	Gas	12-4-87		
853	"	Howard E. Gray, Jr.	50		Lincoln	2900'	Gas	12-4-87		
854	SEE: 661-1140-A	Richard Straight	51		Grant	2941'	Gas	12-4-87		
855	SEE: 661-1141-A	Virginia B. Williams	53		Grant	2266'	Gas	12-4-87		
856	"	Mary Lepley	60		Fairmont	2804'	Gas	12-4-87		
857	SEE: 661-1142-A	Martha Hendricks	65		Grant	2930'	Gas	12-4-87		