

WW-7
8-30-06



West Virginia Department of Environmental Protection
Office of Oil and Gas

WELL LOCATION FORM: GPS

API: 47-061-01338-C WELL NO.: 8L1

FARM NAME: CONSOL Energy Inc

RESPONSIBLE PARTY NAME: Lonnie Atkins

COUNTY: Monongalia DISTRICT: Clay

QUADRANGLE: Blacksville

SURFACE OWNER: CONSOL Energy Inc

ROYALTY OWNER: CONSOL Energy Inc

UTM GPS NORTHING: 4390842.98

UTM GPS EASTING: 568285.47 GPS ELEVATION: 440 (1436')

The Responsible Party named above has chosen to submit GPS coordinates in lieu of preparing a new well location plat for a plugging permit or assigned API number on the above well. The Office of Oil and Gas will not accept GPS coordinates that do not meet the following requirements:

1. Datum: NAD 1983, Zone: 17 North, Coordinate Units: meters, Altitude: height above mean sea level (MSL) – meters.
2. Accuracy to Datum – 3.05 meters
3. Data Collection Method:

Survey grade GPS : Post Processed Differential

Real-Time Differential

Mapping Grade GPS : Post Processed Differential

Real-Time Differential

4. Letter size copy of the topography map showing the well location.

I the undersigned, hereby certify this data is correct to the best of my knowledge and belief and shows all the information required by law and the regulations issued and prescribed by the Office of Oil and Gas.

Lonnie Atkins

President

Signature

Title

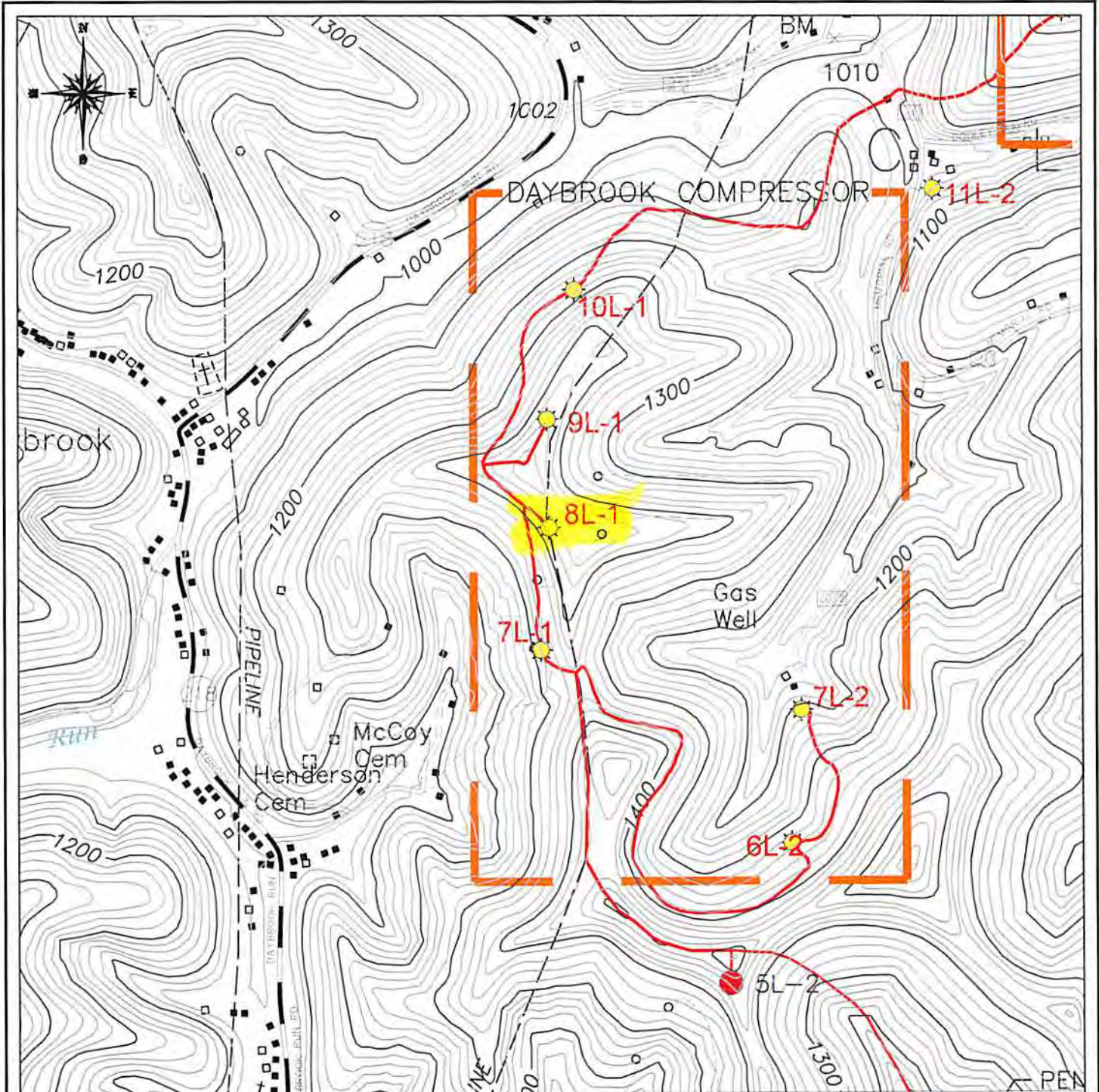
Date

RECEIVED
Office of Oil and Gas

SEP 16 2014




WV Department of
Environmental Protection

8/25/2014



LEGEND

UTM ZONE 17 S
 EASTING: 568,285.47
 NORTHING: 4,390,842.98
 ELEVATION: 440 M

SURVEYED CBM WELL LOCATION 
 NON-SURVEYED CBM WELL LOCATION 
 GAS LINE 
 0 FT 1000 FT 2000 FT

LOCATION MAP

RECEIVED
 NOUMENON CORPORATION
 Office of Coal and Gas
 2461 MASON DIXON HIGHWAY
 CORE, WV 26541
 SEP 10 2014
API WELL NO. - 47-061-1338-C
OPERATOR'S WELL NO. - 8L1
 WV Department of
 Environmental Protection
 CLAY DISTRICT - MONONGALIA COUNTY, WV
 7.5 MINUTE SERIES - 20' CONTOUR INTERVAL
 BLACKSVILLE, WV TOPO QUAD