

WW-7
8-30-06



West Virginia Department of Environmental Protection
Office of Oil and Gas

WELL LOCATION FORM: GPS

API: 47-061-01363-C WELL NO.: 3L4

FARM NAME: WL Tennant Est

RESPONSIBLE PARTY NAME: Lonnie Atkins

COUNTY: Monongalia DISTRICT: Clay

QUADRANGLE: Blacksville

SURFACE OWNER: WL Tennant Est

ROYALTY OWNER: WL Tennant Est

UTM GPS NORTHING: 4393827.21

UTM GPS EASTING: 570913.26 GPS ELEVATION: 391^m (1282')

The Responsible Party named above has chosen to submit GPS coordinates in lieu of preparing a new well location plat for a plugging permit or assigned API number on the above well. The Office of Oil and Gas will not accept GPS coordinates that do not meet the following requirements:

- Datum: NAD 1983, Zone: 17 North, Coordinate Units: meters, Altitude: height above mean sea level (MSL) – meters.
- Accuracy to Datum – 3.05 meters
- Data Collection Method:

Survey grade GPS : Post Processed Differential

Real-Time Differential

Mapping Grade GPS : Post Processed Differential

Real-Time Differential

- Letter size copy of the topography map showing the well location.**

I the undersigned, hereby certify this data is correct to the best of my knowledge and belief and shows all the information required by law and the regulations issued and prescribed by the Office of Oil and Gas.

President

8/25/2014

Signature

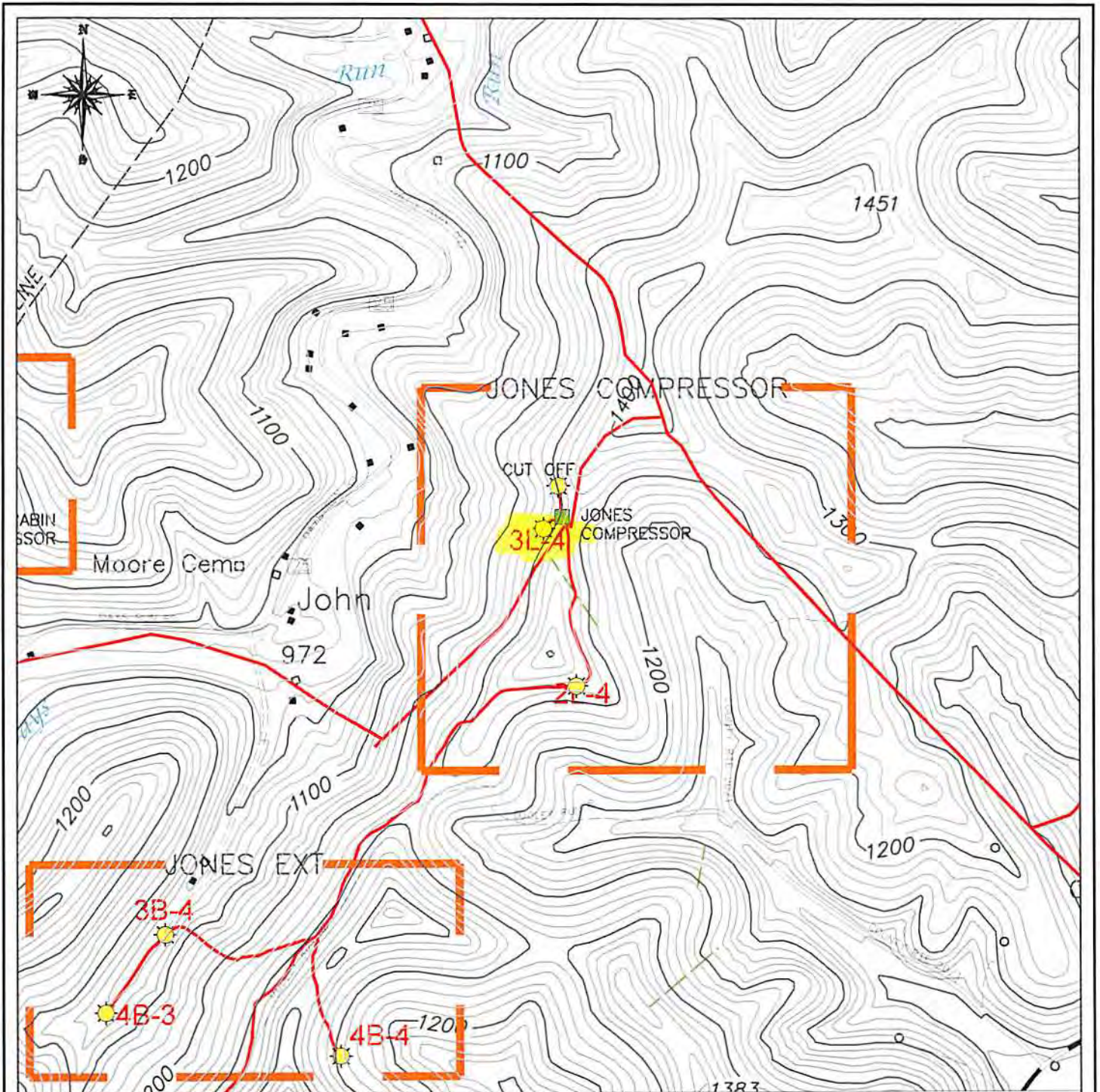
Title

Date

RECEIVED
Office of Oil and Gas




SEP 16 2014

WV Department of
Environmental Protection

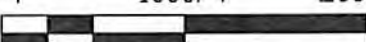


LEGEND

- GAS WELL
- UTM ZONE 17 S
- EASTING: 570,913.26
- NORTHING: 4,393,827.21
- ELEVATION: 391 M

SURVEYED CBM WELL LOCATION 
 NON-SURVEYED CBM WELL LOCATION 
 GAS LINE 

0FT 1000FT 2000FT



LOCATION MAP

NOUMENON CORPORATION
 2461 MASON DIXON HIGHWAY
 CORE, WV 26541

API WELL NO. - 47-061-1363-C
OPERATOR'S WELL NO. - 3L4

CLAY DISTRICT - MONONGALIA COUNTY, WV
 7.5 MINUTE SERIES - 20' CONTOUR INTERVAL
 BLACKSVILLE, WV TOPO QUAD

RECEIVED
 and Gas
 05 13 2014
 Department of
 Environmental Protection