



CNX Gas Company, LLC

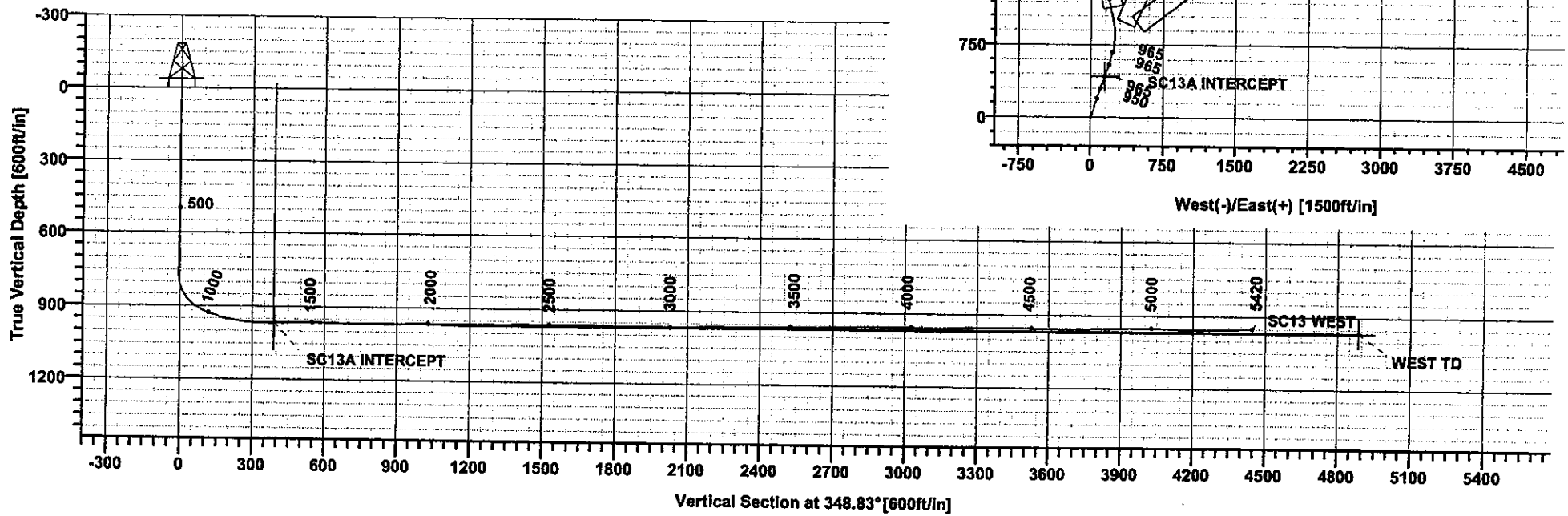
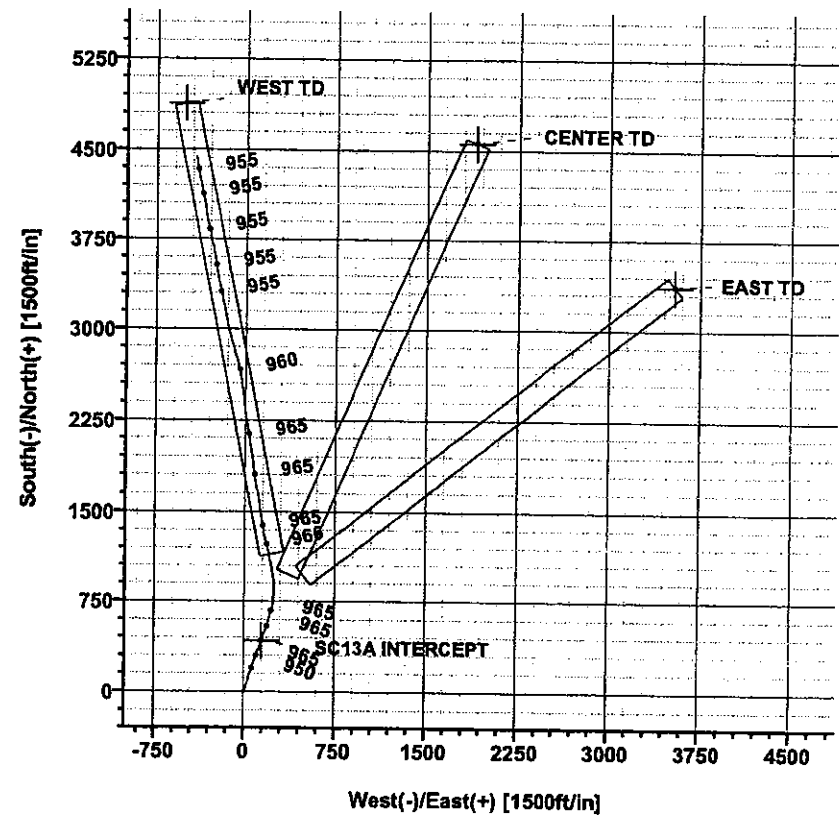
Field: MONONGALIA COUNTY, WV
 Site: SC-13A WELL LOCATION
 Well: ACCESS SC-13A
 Wellpath: SC13 WEST



TARGET DETAILS						
Name	TVD	+N/-S	+E/-W	Northing	Easting	Shape
WEST TD	966.00	4880.60	-505.69	440440.68	1754162.34	Rectangle (3800x200)
CENTER TD	966.00	4564.57	1909.68	440101.22	1756574.50	Rectangle (3900x200)
SC13A INTERCEPT	966.00	428.52	145.19	435982.49	1754789.97	Circle (Radius: 1)
EAST TD	966.00	3369.88	3543.31	438890.73	1758196.48	Rectangle (3881x200)

SITE DETAILS
 SC-13A WELL LOCATION
 Monongalia County, WV
 Site Centre Northing: 435,555.40
 Easting: 1,754,620.63
 Ground Level: 1203.65
 GL + 8 RKB: 1211.65
 Convergence: -0.56

Plot Date: 4/23/2007
 By: Carl Bakay
 Scientific Drilling, Inc.
 800-676-7302
 carl.bakay@scientificdrilling.com



MONONGALIA 1537M

AUG 1 0 2007

AUG 1 0 2007



Scientific Drilling Survey Report



Company: CNX Gas Company, LLC	Date: 5/15/2007	Time: 15:46:30	Page: 1
Field: MONONGALIA COUNTY, WV	Co-ordinate(NE) Reference: Well: ACCESS SC-13A, True North		
Site: SC-13A WELL LOCATION	Vertical (TVD) Reference: GL 1203.65 + 8 1211.7		
Well: ACCESS SC-13A	Section (VS) Reference: Well (0.00N,0.00E,348.83Azi)		
Wellpath: SC13 WEST	Survey Calculation Method: Minimum Curvature		Db: Sybase

Field: MONONGALIA COUNTY, WV Northern West Virginia and Pennsylvania Operations USA	Map System: US State Plane Coordinate System 1927	Map Zone: West Virginia, Northern Zone
Geo Datum: NAD27 (Clarke 1866)	Sys Datum: Mean Sea Level	Coordinate System: Well Centre
		Geomagnetic Model: igrf2005

Site: SC-13A WELL LOCATION Monongalia County, WV	Site Position: From: Map	Northing: 435555.40 ft	Latitude: 39 41 33.287 N
	Position Uncertainty: 0.00 ft	Easting: 1754620.63 ft	Longitude: 80 22 19.162 W
	Ground Level: 1203.65 ft	North Reference: True	Grid Convergence: -0.56 deg

Well: ACCESS SC-13A	Slot Name:
Well Position: +N-S 0.00 ft	Latitude: 39 41 33.287 N
+E-W 0.00 ft	Longitude: 80 22 19.162 W
Position Uncertainty: 0.00 ft	

Wellpath: SC13 WEST	Drilled From: Surface
Current Datum: GL 1203.65 + 8	Tie-on Depth: 0.00 ft
Magnetic Data: 4/23/2007	Above System Datum: Mean Sea Level
Field Strength: 53317 nT	Declination: -8.56 deg
Vertical Section: Depth From (TVD)	Mag Dip Angle: 67.76 deg
ft	+N-S ft
	+E-W ft
	Direction deg
1211.65	0.00
	0.00
	348.83

Survey Program for Definitive Wellpath			
Date: 5/2/2007	Validated: No	Version: 0	
Actual From To	Survey	Toolcode	Tool Name
ft ft			
50.00 573.00	Gyro Survey #1	Drop Gyro-SYS	Drop Gyro Systematic
741.00 5420.00	Survey #2	MWD-SDI-SYS	Scientific MWD Systematic

MD ft	Incl deg	Azim deg	TVD ft	+N-S ft	+E-W ft	VS ft	DLS deg/100ft	Build deg/100ft	Turn deg/100ft	Tool/Comment
50.00	0.07	192.60	50.00	0.26	0.34	0.19	0.00	0.00	0.00	TIE LINE
100.00	0.11	214.20	100.00	0.19	0.31	0.13	0.10	0.08	43.20	Drop Gyro-SYS
150.00	0.15	207.30	150.00	0.09	0.25	0.04	0.09	0.08	-13.80	Drop Gyro-SYS
200.00	0.18	175.70	200.00	-0.04	0.23	-0.09	0.19	0.06	-63.20	Drop Gyro-SYS
250.00	0.27	177.70	250.00	-0.24	0.24	-0.28	0.18	0.18	4.00	Drop Gyro-SYS
300.00	0.38	182.10	300.00	-0.52	0.23	-0.56	0.23	0.22	8.80	Drop Gyro-SYS
350.00	0.38	196.50	350.00	-0.85	0.18	-0.87	0.19	0.00	28.80	Drop Gyro-SYS
400.00	0.27	185.10	400.00	-1.12	0.12	-1.13	0.25	-0.22	-22.80	Drop Gyro-SYS
450.00	0.50	169.90	450.00	-1.46	0.15	-1.46	0.50	0.46	-30.40	Drop Gyro-SYS
500.00	0.39	196.90	499.99	-1.83	0.14	-1.83	0.47	-0.22	54.00	Drop Gyro-SYS
550.00	0.47	199.10	549.99	-2.19	0.02	-2.15	0.16	0.16	4.40	Drop Gyro-SYS
573.00	0.89	187.10	572.99	-2.46	-0.03	-2.40	1.92	1.83	-52.17	Drop Gyro-SYS
741.00	1.25	115.49	740.97	-4.54	1.46	-4.74	0.77	0.21	-42.62	MWD-SDI-SYS
756.00	1.18	129.88	755.96	-4.71	1.73	-4.96	2.08	-0.47	95.93	MWD-SDI-SYS
788.00	7.10	17.84	787.89	-3.04	2.59	-3.48	23.82	18.50	-350.12	MWD-SDI-SYS
819.00	19.88	14.29	817.97	3.92	4.49	2.98	41.29	41.23	-11.45	MWD-SDI-SYS
852.00	32.01	19.47	847.59	17.66	8.80	15.62	37.36	36.76	15.70	MWD-SDI-SYS
882.00	43.69	20.50	871.24	34.92	15.10	31.33	38.99	38.93	3.43	MWD-SDI-SYS
913.00	55.30	19.15	891.34	57.07	23.06	51.52	37.60	37.45	-4.35	MWD-SDI-SYS
944.00	61.39	17.55	907.60	82.10	31.35	74.47	20.13	19.65	-5.16	MWD-SDI-SYS
976.00	68.29	18.26	921.20	109.64	40.26	99.77	21.66	21.56	2.22	MWD-SDI-SYS
1009.00	73.21	17.93	932.07	139.25	49.93	126.94	14.94	14.91	-1.00	MWD-SDI-SYS

5000 2 000



Scientific Drilling Survey Report



Company: CNX Gas Company, LLC	Date: 5/15/2007	Time: 15:46:30	Page: 2
Field: MONONGALIA COUNTY, WV	Co-ordinate(N/E) Reference: Well: ACCESS SC-13A, True North		
Site: SC-13A WELL LOCATION	Vertical (TVD) Reference: GL 1203.65 + 8 1211.7		
Well: ACCESS SC-13A	Section (VS) Reference: Well (0.00N,0.00E,348.83Azi)		
Wellpath: SC13 WEST	Survey Calculation Method: Minimum Curvature		Db: Sybase

Survey

MD ft	Incl deg	Azim deg	TVD ft	+N-S ft	+E-W ft	VS ft	DLS deg/100ft	Build deg/100ft	Turn deg/100ft	Tool/Comment
1042.00	71.92	17.97	941.96	169.20	59.63	154.44	3.91	-3.91	0.12	MWD-SDI-SYS
1072.00	76.77	18.56	950.05	196.62	68.68	179.59	16.28	16.17	1.97	MWD-SDI-SYS
1104.00	83.99	18.37	955.40	226.53	78.67	207.00	22.57	22.56	-0.59	MWD-SDI-SYS
1135.00	80.88	18.73	959.48	255.66	88.44	233.68	10.10	-10.03	1.16	MWD-SDI-SYS
1157.00	82.16	18.87	962.72	276.26	95.46	252.53	5.85	5.82	0.64	MWD-SDI-SYS
1167.00	84.29	18.38	963.90	285.67	98.63	261.15	21.85	21.30	-4.90	MWD-SDI-SYS
1176.00	86.44	17.70	964.63	294.20	101.41	268.98	25.05	23.89	-7.56	MWD-SDI-SYS
1187.00	87.08	16.97	965.25	304.68	104.68	278.63	8.82	5.82	-6.64	MWD-SDI-SYS
1198.00	87.01	16.94	965.82	315.19	107.88	288.32	0.69	-0.64	-0.27	MWD-SDI-SYS
1209.00	86.84	18.59	966.41	325.65	111.23	297.93	15.06	-1.55	15.00	MWD-SDI-SYS
1219.00	87.75	19.97	966.88	335.08	114.53	306.54	16.52	9.10	13.80	MWD-SDI-SYS
1231.00	88.69	21.00	967.25	346.31	118.73	316.75	11.62	7.83	8.58	MWD-SDI-SYS
1241.00	89.23	21.56	967.44	355.63	122.36	325.19	7.78	5.40	5.60	MWD-SDI-SYS
1251.00	89.36	21.48	967.56	364.93	126.02	333.60	1.53	1.30	-0.80	MWD-SDI-SYS
1262.00	89.13	21.36	967.70	375.17	130.04	342.87	2.36	-2.09	-1.09	MWD-SDI-SYS
1267.00	88.89	21.17	967.79	379.83	131.85	347.09	6.12	-4.80	-3.80	MWD-SDI-SYS
1293.00	89.66	20.02	968.12	404.16	141.00	369.19	5.32	2.96	-4.42	MWD-SDI-SYS
1325.00	91.61	19.13	967.76	434.31	151.72	396.69	6.70	6.09	-2.78	MWD-SDI-SYS
1355.00	92.11	19.10	966.79	462.64	161.54	422.59	1.67	1.67	-0.10	MWD-SDI-SYS
1387.00	92.32	18.94	965.55	492.87	171.96	450.22	0.82	0.66	-0.50	MWD-SDI-SYS
1418.00	89.93	18.83	964.95	522.20	181.99	477.05	7.72	-7.71	-0.35	MWD-SDI-SYS
1450.00	89.83	18.92	965.01	552.48	192.34	504.75	0.42	-0.31	0.28	MWD-SDI-SYS
1482.00	90.07	18.41	965.04	582.79	202.58	532.51	1.76	0.75	-1.59	MWD-SDI-SYS
1513.00	90.84	17.63	964.79	612.27	212.17	559.57	3.54	2.48	-2.52	MWD-SDI-SYS
1545.00	89.90	15.62	964.59	642.93	221.33	587.88	6.93	-2.94	-6.28	MWD-SDI-SYS
1576.00	88.62	13.56	964.99	672.93	229.13	615.79	7.82	-4.13	-6.65	MWD-SDI-SYS
1608.00	88.66	10.49	965.75	704.21	235.80	645.19	9.59	0.12	-9.59	MWD-SDI-SYS
1639.00	89.56	8.42	966.23	734.78	240.89	674.20	7.28	2.90	-6.68	MWD-SDI-SYS
1671.00	89.73	6.12	966.43	766.52	244.94	704.55	7.21	0.53	-7.19	MWD-SDI-SYS
1703.00	89.97	4.28	966.51	798.39	247.84	735.26	5.80	0.75	-5.75	MWD-SDI-SYS
1734.00	89.70	1.38	966.60	829.35	249.37	765.33	9.40	-0.87	-9.35	MWD-SDI-SYS
1766.00	89.20	359.14	966.91	861.35	249.52	796.69	7.17	-1.56	-7.00	MWD-SDI-SYS
1797.00	88.86	356.62	967.43	892.32	248.37	827.30	8.20	-1.10	-8.13	MWD-SDI-SYS
1829.00	90.97	355.68	967.48	924.24	246.22	859.04	7.22	6.59	-2.94	MWD-SDI-SYS
1892.00	91.04	350.24	966.37	986.74	238.50	921.84	8.63	0.11	-8.63	MWD-SDI-SYS
1924.00	91.01	349.29	965.80	1018.22	232.82	953.83	2.97	-0.09	-2.97	MWD-SDI-SYS
1955.00	90.23	350.52	965.47	1048.74	227.38	984.82	4.70	-2.52	3.97	MWD-SDI-SYS
1987.00	89.16	347.92	965.64	1080.17	221.40	1016.82	8.79	-3.34	-8.12	MWD-SDI-SYS
2019.00	88.89	347.72	966.18	1111.44	214.65	1048.81	1.05	-0.84	-0.62	MWD-SDI-SYS
2050.00	89.97	347.37	966.49	1141.71	207.96	1079.80	3.66	3.48	-1.13	MWD-SDI-SYS
2082.00	90.94	346.25	966.24	1172.87	200.66	1111.78	4.63	3.03	-3.50	MWD-SDI-SYS
2113.00	90.27	345.67	965.91	1202.94	193.14	1142.74	2.86	-2.16	-1.87	MWD-SDI-SYS
2145.00	91.01	344.86	965.55	1233.88	185.00	1174.67	3.43	2.31	-2.53	MWD-SDI-SYS
2177.00	91.07	347.51	964.97	1264.95	177.37	1206.63	8.28	0.19	8.28	MWD-SDI-SYS
2208.00	90.27	348.80	964.61	1295.29	171.00	1237.62	4.90	-2.58	4.16	MWD-SDI-SYS
2240.00	89.03	347.25	964.80	1326.59	164.36	1269.62	6.20	-3.87	-4.84	MWD-SDI-SYS
2272.00	88.96	349.02	965.36	1357.90	157.79	1301.61	5.53	-0.22	5.53	MWD-SDI-SYS
2303.00	91.11	350.86	965.35	1388.42	152.37	1332.60	9.13	6.94	5.94	MWD-SDI-SYS
2335.00	92.11	352.48	964.45	1420.07	147.74	1364.55	5.95	3.12	5.06	MWD-SDI-SYS
2367.00	91.11	351.71	963.55	1451.75	143.34	1396.48	3.94	-3.12	-2.41	MWD-SDI-SYS
2399.00	89.60	350.84	963.35	1483.38	138.48	1428.45	5.45	-4.72	-2.72	MWD-SDI-SYS
2430.00	89.46	350.20	963.60	1513.95	133.38	1459.44	2.11	-0.45	-2.06	MWD-SDI-SYS
2462.00	90.91	350.59	963.50	1545.50	128.04	1491.42	4.69	4.53	1.22	MWD-SDI-SYS

MONONGALIA 1537M



Scientific Drilling Survey Report



Company: CNX Gas Company, LLC	Date: 5/15/2007	Time: 15:46:30	Page: 3
Field: MONONGALIA COUNTY, WV	Co-ordinate(NE) Reference: Well: ACCESS SC-13A, True North		
Site: SC-13A WELL LOCATION	Vertical (TVD) Reference: GL 1203.65 + 8 1211.7		
Well: ACCESS SC-13A	Section (VS) Reference: Well (0.00N,0.00E,348.83Azi)		
Wellpath: SC13 WEST	Survey Calculation Method: Minimum Curvature		Db: Sybase

Survey

MD ft	Incl deg	Azim deg	TVD ft	+N-S ft	+E-W ft	VS ft	DLS deg/100ft	Bulld deg/100ft	Turn deg/100ft	Tool/Comment
2494.00	90.50	350.16	963.11	1577.05	122.69	1523.41	1.86	-1.28	-1.34	MWD-SDI-SYS
2525.00	88.96	349.10	963.25	1607.54	117.11	1554.40	6.03	-4.97	-3.42	MWD-SDI-SYS
2557.00	89.73	348.85	963.62	1638.95	110.99	1586.40	2.53	2.41	-0.78	MWD-SDI-SYS
2588.00	91.11	349.47	963.39	1669.40	105.16	1617.40	4.88	4.45	2.00	MWD-SDI-SYS
2620.00	91.64	350.76	962.62	1700.91	99.67	1649.38	4.36	1.66	4.03	MWD-SDI-SYS
2652.00	91.68	350.70	961.70	1732.48	94.52	1681.35	0.23	0.12	-0.19	MWD-SDI-SYS
2683.00	86.78	350.92	962.11	1763.07	89.57	1712.32	15.82	-15.81	0.71	MWD-SDI-SYS
2715.00	85.36	351.03	964.31	1794.60	84.56	1744.22	4.45	-4.44	0.34	MWD-SDI-SYS
2746.00	87.48	351.16	966.24	1825.16	79.77	1775.14	6.85	6.84	0.42	MWD-SDI-SYS
2778.00	88.76	351.23	967.29	1856.77	74.87	1807.09	4.01	4.00	0.22	MWD-SDI-SYS
2810.00	91.51	351.35	967.22	1888.40	70.03	1839.06	8.60	8.59	0.37	MWD-SDI-SYS
2841.00	91.61	351.37	966.37	1919.03	65.37	1870.02	0.33	0.32	0.06	MWD-SDI-SYS
2873.00	91.38	351.34	965.54	1950.66	60.57	1901.97	0.72	-0.72	-0.09	MWD-SDI-SYS
2904.00	90.07	350.86	965.14	1981.28	55.77	1932.95	4.50	-4.23	-1.55	MWD-SDI-SYS
2936.00	88.79	350.69	965.46	2012.87	50.64	1964.93	4.04	-4.00	-0.53	MWD-SDI-SYS
2967.00	88.89	350.87	966.09	2043.46	45.67	1995.90	0.66	0.32	0.58	MWD-SDI-SYS
2999.00	89.66	351.33	966.50	2075.07	40.72	2027.87	2.80	2.41	1.44	MWD-SDI-SYS
3031.00	91.08	351.22	966.29	2106.70	35.87	2059.84	4.45	4.44	-0.34	MWD-SDI-SYS
3062.00	92.15	351.11	965.41	2137.32	31.11	2090.80	3.47	3.45	-0.35	MWD-SDI-SYS
3094.00	92.32	351.06	964.17	2168.91	26.16	2122.76	0.55	0.53	-0.16	MWD-SDI-SYS
3125.00	91.48	350.94	963.14	2199.51	21.31	2153.72	2.74	-2.71	-0.39	MWD-SDI-SYS
3157.00	90.97	351.13	962.45	2231.11	16.32	2185.68	1.70	-1.59	0.59	MWD-SDI-SYS
3188.00	90.74	351.47	961.99	2261.75	11.63	2216.65	1.32	-0.74	1.10	MWD-SDI-SYS
3220.00	88.96	351.84	962.08	2293.41	6.99	2248.61	5.68	-5.56	1.16	MWD-SDI-SYS
3252.00	87.38	352.02	963.10	2325.08	2.50	2280.55	4.97	-4.94	0.56	MWD-SDI-SYS
3283.00	89.46	352.25	963.95	2355.77	-1.74	2311.48	6.75	6.71	0.74	MWD-SDI-SYS
3315.00	90.94	353.70	963.84	2387.53	-5.65	2343.40	6.47	4.62	4.53	MWD-SDI-SYS
3346.00	90.53	353.29	963.44	2418.33	-9.16	2374.29	1.87	-1.32	-1.32	MWD-SDI-SYS
3378.00	92.05	352.55	962.72	2450.07	-13.11	2406.20	5.28	4.75	-2.31	MWD-SDI-SYS
3410.00	92.92	353.01	961.34	2481.79	-17.13	2438.09	3.07	2.72	1.44	MWD-SDI-SYS
3441.00	90.67	352.63	960.36	2512.53	-21.00	2469.00	7.36	-7.26	-1.23	MWD-SDI-SYS
3473.00	90.03	352.16	960.17	2544.25	-25.23	2500.94	2.48	-2.00	-1.47	MWD-SDI-SYS
3504.00	89.66	350.72	960.25	2574.90	-29.85	2531.91	4.80	-1.19	-4.65	MWD-SDI-SYS
3537.00	89.77	349.01	960.42	2607.38	-35.65	2564.90	5.19	0.33	-5.18	MWD-SDI-SYS
3569.00	90.27	347.37	960.41	2638.71	-42.20	2596.90	5.36	1.56	-5.12	MWD-SDI-SYS
3600.00	90.84	346.28	960.11	2668.89	-49.27	2627.87	3.97	1.84	-3.52	MWD-SDI-SYS
3632.00	91.01	346.07	959.59	2699.96	-56.91	2659.84	0.84	0.53	-0.66	MWD-SDI-SYS
3664.00	91.11	344.67	959.00	2730.91	-64.99	2691.77	4.39	0.31	-4.37	MWD-SDI-SYS
3695.00	90.17	344.44	958.65	2760.79	-73.25	2722.68	3.12	-3.03	-0.74	MWD-SDI-SYS
3727.00	90.40	344.17	958.49	2791.60	-81.91	2754.58	1.11	0.72	-0.84	MWD-SDI-SYS
3758.00	90.84	343.24	958.16	2821.35	-90.60	2785.46	3.32	1.42	-3.00	MWD-SDI-SYS
3790.00	91.07	343.90	957.62	2852.04	-99.65	2817.32	2.18	0.72	2.06	MWD-SDI-SYS
3820.00	91.21	344.54	957.03	2880.90	-107.81	2847.21	2.18	0.47	2.13	MWD-SDI-SYS
3852.00	89.90	345.76	956.72	2911.83	-116.01	2879.15	5.59	-4.09	3.81	MWD-SDI-SYS
3883.00	89.36	345.25	956.92	2941.84	-123.77	2910.09	2.40	-1.74	-1.65	MWD-SDI-SYS
3915.00	89.66	343.96	957.19	2972.69	-132.26	2942.00	4.14	0.94	-4.03	MWD-SDI-SYS
3947.00	89.93	345.41	957.30	3003.56	-140.72	2973.92	4.61	0.84	4.53	MWD-SDI-SYS
3978.00	89.46	348.34	957.47	3033.74	-147.75	3004.90	9.57	-1.52	9.45	MWD-SDI-SYS
4010.00	89.50	348.93	957.76	3065.11	-154.06	3036.90	1.85	0.12	1.84	MWD-SDI-SYS
4041.00	89.26	348.50	958.10	3095.51	-160.13	3067.89	1.59	-0.77	-1.39	MWD-SDI-SYS
4073.00	89.17	347.90	958.53	3126.83	-166.67	3099.89	1.90	-0.28	-1.87	MWD-SDI-SYS
4105.00	89.50	347.67	958.90	3158.11	-173.44	3131.88	1.26	1.03	-0.72	MWD-SDI-SYS
4136.00	90.91	347.95	958.79	3188.41	-179.98	3162.87	4.64	4.55	0.90	MWD-SDI-SYS
4168.00	91.95	348.04	958.00	3219.70	-186.64	3194.86	3.26	3.25	0.28	MWD-SDI-SYS

2002 0 1 2008

AUG 1 0 2007



Scientific Drilling Survey Report



Company: CNX Gas Company, LLC Field: MONONGALIA COUNTY, WV Site: SC-13A WELL LOCATION Well: ACCESS SC-13A Wellpath: SC13 WEST	Date: 5/15/2007 Time: 15:46:30 Page: 4 Co-ordinate(N/E) Reference: Well: ACCESS SC-13A, True North Vertical (TVD) Reference: GL 1203.65 + 8 1211.7 Section (VS) Reference: Well (0.00N,0.00E,348.83Azi) Survey Calculation Method: Minimum Curvature Db: Sybase
---	--

Survey

MD ft	Incl deg	Azim deg	TVD ft	+N/-S ft	+E/-W ft	VS ft	DLS deg/100ft	Build deg/100ft	Turn deg/100ft	Tool/Comment
4199.00	91.68	347.95	957.01	3250.00	-193.08	3225.84	0.92	-0.87	-0.29	MWD-SDI-SYS
4231.00	92.22	347.62	955.92	3281.26	-199.85	3257.82	1.98	1.69	-1.03	MWD-SDI-SYS
4262.00	90.50	348.13	955.19	3311.56	-206.36	3288.80	5.79	-5.55	1.65	MWD-SDI-SYS
4294.00	90.74	348.38	954.84	3342.89	-212.87	3320.80	1.08	0.75	0.78	MWD-SDI-SYS
4325.00	91.04	348.25	954.36	3373.24	-219.15	3351.80	1.05	0.97	-0.42	MWD-SDI-SYS
4357.00	89.70	348.83	954.15	3404.60	-225.51	3383.79	4.56	-4.19	1.81	MWD-SDI-SYS
4389.00	89.83	349.32	954.29	3436.02	-231.57	3415.79	1.58	0.41	1.53	MWD-SDI-SYS
4420.00	91.01	349.45	954.06	3466.49	-237.28	3446.79	3.83	3.81	0.42	MWD-SDI-SYS
4452.00	89.06	350.47	954.04	3498.00	-242.86	3478.78	6.88	-6.09	3.19	MWD-SDI-SYS
4484.00	88.42	350.93	954.74	3529.57	-248.03	3510.76	2.46	-2.00	1.44	MWD-SDI-SYS
4515.00	88.52	351.03	955.57	3560.18	-252.89	3541.72	0.46	0.32	0.32	MWD-SDI-SYS
4547.00	88.22	350.86	956.48	3591.76	-257.92	3573.69	1.08	-0.94	-0.53	MWD-SDI-SYS
4578.00	88.86	350.01	957.27	3622.32	-263.07	3604.67	3.43	2.06	-2.74	MWD-SDI-SYS
4610.00	90.10	349.52	957.56	3653.81	-268.76	3636.66	4.17	3.87	-1.53	MWD-SDI-SYS
4641.00	91.07	348.93	957.24	3684.26	-274.55	3667.66	3.66	3.13	-1.90	MWD-SDI-SYS
4673.00	90.91	348.64	956.69	3715.65	-280.78	3699.65	1.03	-0.50	-0.91	MWD-SDI-SYS
4702.00	90.10	347.74	956.44	3744.03	-286.71	3728.65	4.18	-2.79	-3.10	MWD-SDI-SYS
4732.00	90.91	348.08	956.17	3773.36	-292.99	3758.64	2.93	2.70	1.13	MWD-SDI-SYS
4763.00	91.11	348.21	955.63	3803.70	-299.36	3789.64	0.77	0.65	0.42	MWD-SDI-SYS
4792.00	91.14	347.53	955.06	3832.05	-305.45	3818.63	2.35	0.10	-2.34	MWD-SDI-SYS
4801.00	91.21	347.70	954.87	3840.83	-307.38	3827.62	2.04	0.78	1.89	MWD-SDI-SYS
4828.00	91.88	347.92	954.14	3867.22	-313.08	3854.61	2.61	2.48	0.81	Projection to Bit
4832.00	91.98	347.95	954.01	3871.12	-313.92	3858.61	2.61	2.48	0.81	MWD-SDI-SYS
4864.00	92.35	348.60	952.80	3902.43	-320.42	3890.58	2.34	1.16	2.03	MWD-SDI-SYS
4895.00	90.87	349.64	951.93	3932.86	-326.27	3921.57	5.83	-4.77	3.35	MWD-SDI-SYS
4927.00	90.77	349.83	951.47	3964.35	-331.97	3953.56	0.67	-0.31	0.59	MWD-SDI-SYS
4959.00	89.87	349.37	951.29	3995.82	-337.74	3985.56	3.16	-2.81	-1.44	MWD-SDI-SYS
4990.00	89.30	349.66	951.52	4026.30	-343.39	4016.55	2.06	-1.84	0.94	MWD-SDI-SYS
5022.00	89.60	349.56	951.82	4057.78	-349.16	4048.55	0.99	0.94	-0.31	MWD-SDI-SYS
5053.00	87.48	348.80	952.61	4088.21	-354.97	4079.54	7.26	-6.84	-2.45	MWD-SDI-SYS
5085.00	85.56	347.57	954.56	4119.48	-361.51	4111.47	7.12	-6.00	-3.84	MWD-SDI-SYS
5117.00	87.62	348.50	956.46	4150.72	-368.13	4143.41	7.06	6.44	2.91	MWD-SDI-SYS
5148.00	89.23	349.16	957.31	4181.12	-374.14	4174.40	5.61	5.19	2.13	MWD-SDI-SYS
5180.00	90.70	349.93	957.33	4212.59	-379.94	4206.39	5.19	4.59	2.41	MWD-SDI-SYS
5211.00	90.44	349.86	957.02	4243.11	-385.38	4237.39	0.87	-0.84	-0.23	MWD-SDI-SYS
5243.00	91.44	349.87	956.50	4274.61	-391.01	4269.38	3.13	3.12	0.03	MWD-SDI-SYS
5275.00	90.84	350.14	955.86	4306.11	-396.57	4301.36	2.06	-1.87	0.84	MWD-SDI-SYS
5306.00	91.11	350.18	955.33	4336.65	-401.86	4332.35	0.88	0.87	0.13	MWD-SDI-SYS
5338.00	91.95	350.38	954.48	4368.18	-407.26	4364.33	2.70	2.62	0.62	MWD-SDI-SYS
5369.00	92.38	350.34	953.31	4398.72	-412.45	4395.30	1.39	1.39	-0.13	MWD-SDI-SYS
5420.00	93.00	350.34	950.91	4448.94	-421.00	4446.22	1.22	1.22	0.00	MWD-SDI-SYS
5881.80	93.00	350.34	926.75	4903.57	-498.38	4907.23	0.00	0.00	0.00	PROJECTED to TD

Annotation

MD ft	TVD ft	Description
4828.00	954.14	Projection to Bit

MONONGALIA 1537 M



Scientific Drilling Survey Report - Geographic



Company: CNX Gas Company, LLC Field: MONONGALIA COUNTY, WV Site: SC-13A WELL LOCATION Well: ACCESS SC-13A Wellpath: SC13 WEST		Date: 5/15/2007 Time: 15:47:45 Page: 1 Co-ordinate(NE) Reference: Well: ACCESS SC-13A, True North Vertical (TVD) Reference: GL 1203.65 + 8 1211.7 Section (VS) Reference: Well (0.00N,0.00E,348.83Azi) Survey Calculation Method: Minimum Curvature Db: Sybase									
Field: MONONGALIA COUNTY, WV Northern West Virginia and Pennsylvania Operations USA Map System: S State Plane Coordinate System 1927 Geo Datum: NAD27 (Clarke 1866) Sys Datum: Mean Sea Level		Map Zone: West Virginia, Northern Zone Coordinate System: Well Centre Geomagnetic Model: igrf2005									
Site: SC-13A WELL LOCATION Monongalia County, WV											
Site Position: From: Map Position Uncertainty: 0.00 ft Ground Level: 1203.65 ft		Northing: 435555.40 ft Easting: 1754620.63 ft Latitude: 39 41 33.287 N Longitude: 80 22 19.162 W North Reference: True Grid Convergence: -0.56 deg									
Well: ACCESS SC-13A Well Position: +N/-S 0.00 ft Position Uncertainty: 0.00 ft		Slot Name: Well Position: +E/-W 0.00 ft Position Uncertainty: 0.00 ft									
Wellpath: SC13 WEST Current Datum: GL 1203.65 + 8 Magnetic Data: 4/23/2007 Field Strength: 53317 nT Vertical Section: Depth From (TVD)		Drilled From: Surface Tie-on Depth: 0.00 ft Above System Datum: Mean Sea Level Declination: -8.56 deg Mag Dip Angle: 67.76 deg +N/-S +E/-W Direction ft ft deg									
1211.65		0.00 0.00 348.83									
Survey Program for Definitive Wellpath Date: 5/2/2007 Validated: No Version: 0 Actual From To Survey Toolcode Tool Name ft ft											
50.00 573.00		Gyro Survey #1									
741.00 5420.00		Survey #2 Drop Gyro-SYS Drop Gyro Systematic MWD-SDI-SYS Scientific MWD Systematic									
Survey											
MD ft	Incl deg	Azim deg	TVD ft	+N/-S ft	+E/-W ft	Map Northing ft	Map Easting ft	Latitude Deg Min Sec		Longitude Deg Min Sec	
50.00	0.07	192.60	50.00	0.26	0.34	435555.66	1754620.97	39 41	33.290 N	80 22	19.158 W
100.00	0.11	214.20	100.00	0.19	0.31	435555.59	1754620.94	39 41	33.289 N	80 22	19.158 W
150.00	0.15	207.30	150.00	0.09	0.25	435555.49	1754620.88	39 41	33.288 N	80 22	19.159 W
200.00	0.18	175.70	200.00	-0.04	0.23	435555.35	1754620.85	39 41	33.287 N	80 22	19.159 W
250.00	0.27	177.70	250.00	-0.24	0.24	435555.16	1754620.86	39 41	33.285 N	80 22	19.159 W
300.00	0.38	182.10	300.00	-0.52	0.23	435554.87	1754620.86	39 41	33.282 N	80 22	19.159 W
350.00	0.38	196.50	350.00	-0.85	0.18	435554.55	1754620.80	39 41	33.279 N	80 22	19.160 W
400.00	0.27	185.10	400.00	-1.12	0.12	435554.27	1754620.74	39 41	33.276 N	80 22	19.160 W
450.00	0.50	169.90	450.00	-1.46	0.15	435553.94	1754620.77	39 41	33.273 N	80 22	19.160 W
500.00	0.39	196.90	499.99	-1.83	0.14	435553.56	1754620.75	39 41	33.269 N	80 22	19.160 W
550.00	0.47	199.10	549.99	-2.19	0.02	435553.21	1754620.63	39 41	33.265 N	80 22	19.162 W
573.00	0.89	187.10	572.99	-2.46	-0.03	435552.94	1754620.58	39 41	33.263 N	80 22	19.162 W
741.00	1.25	115.49	740.97	-4.54	1.46	435550.85	1754622.05	39 41	33.242 N	80 22	19.143 W
756.00	1.18	129.88	755.96	-4.71	1.73	435550.67	1754622.31	39 41	33.240 N	80 22	19.140 W
788.00	7.10	17.84	787.89	-3.04	2.59	435552.34	1754623.19	39 41	33.257 N	80 22	19.129 W
819.00	19.88	14.29	817.97	3.92	4.49	435559.28	1754625.15	39 41	33.326 N	80 22	19.105 W
852.00	32.01	19.47	847.59	17.66	8.80	435572.97	1754629.60	39 41	33.461 N	80 22	19.049 W
882.00	43.69	20.50	871.24	34.92	15.10	435590.17	1754636.07	39 41	33.632 N	80 22	18.969 W
913.00	55.30	19.15	891.34	57.07	23.06	435612.24	1754644.24	39 41	33.851 N	80 22	18.867 W
944.00	61.39	17.55	907.60	82.10	31.35	435637.19	1754652.78	39 41	34.098 N	80 22	18.761 W
976.00	68.29	18.26	921.20	109.64	40.26	435664.65	1754661.95	39 41	34.371 N	80 22	18.647 W

5/15/07



Scientific Drilling Survey Report - Geographic



Company: CNX Gas Company, LLC
 Field: MONONGALIA COUNTY, WV
 Site: SC-13A WELL LOCATION
 Well: ACCESS SC-13A
 Wellpath: SC13 WEST

Date: 5/15/2007 Time: 15:47:45 Page: 4
 Co-ordinate(N/E) Reference: Well: ACCESS SC-13A, True North
 Vertical (TVD) Reference: GL 1203.65 + 8 1211.7
 Section (VS) Reference: Well (0.00N,0.00E,348.83Azi)
 Survey Calculation Method: Minimum Curvature Db: Sybase

Survey

MD ft	Incl deg	Azim deg	TVD ft	+N/-S ft	+E/-W ft	Map Northing ft	Map Easting ft	←← Latitude →→		←← Longitude →→	
								Deg	Min Sec	Deg	Min Sec
4105.00	89.50	347.67	958.90	3158.11	-173.44	438715.04	1754477.85	39	42	4.500	N 80 22 21.381 W
4136.00	90.91	347.95	958.79	3188.41	-179.98	438745.40	1754471.60	39	42	4.800	N 80 22 21.465 W
4168.00	91.95	348.04	958.00	3219.70	-186.64	438776.76	1754465.25	39	42	5.109	N 80 22 21.550 W
4199.00	91.68	347.95	957.01	3250.00	-193.08	438807.12	1754459.10	39	42	5.409	N 80 22 21.632 W
4231.00	92.22	347.62	955.92	3281.26	-199.85	438838.45	1754452.64	39	42	5.718	N 80 22 21.719 W
4262.00	90.50	348.13	955.19	3311.56	-206.36	438868.81	1754446.42	39	42	6.017	N 80 22 21.802 W
4294.00	90.74	348.38	954.84	3342.89	-212.87	438900.20	1754440.21	39	42	6.327	N 80 22 21.886 W
4325.00	91.04	348.25	954.36	3373.24	-219.15	438930.61	1754434.23	39	42	6.627	N 80 22 21.966 W
4357.00	89.70	348.83	954.15	3404.60	-225.51	438962.03	1754428.18	39	42	6.937	N 80 22 22.047 W
4389.00	89.83	349.32	954.29	3436.02	-231.57	438993.51	1754422.42	39	42	7.247	N 80 22 22.125 W
4420.00	91.01	349.45	954.06	3466.49	-237.28	439024.03	1754417.01	39	42	7.548	N 80 22 22.198 W
4452.00	89.06	350.47	954.04	3498.00	-242.86	439055.59	1754411.73	39	42	7.860	N 80 22 22.269 W
4484.00	88.42	350.93	954.74	3529.57	-248.03	439087.21	1754406.87	39	42	8.172	N 80 22 22.335 W
4515.00	88.52	351.03	955.57	3560.18	-252.89	439117.86	1754402.31	39	42	8.474	N 80 22 22.398 W
4547.00	88.22	350.86	956.48	3591.76	-257.92	439149.50	1754397.58	39	42	8.787	N 80 22 22.462 W
4578.00	88.86	350.01	957.27	3622.32	-263.07	439180.11	1754392.73	39	42	9.089	N 80 22 22.528 W
4610.00	90.10	349.52	957.56	3653.81	-268.76	439211.65	1754387.35	39	42	9.400	N 80 22 22.601 W
4641.00	91.07	348.93	957.24	3684.26	-274.55	439242.15	1754381.85	39	42	9.701	N 80 22 22.675 W
4673.00	90.91	348.64	956.69	3715.65	-280.78	439273.60	1754375.93	39	42	10.011	N 80 22 22.754 W
4702.00	90.10	347.74	956.44	3744.03	-286.71	439302.04	1754370.27	39	42	10.291	N 80 22 22.830 W
4732.00	90.91	348.08	956.17	3773.36	-292.99	439331.43	1754364.27	39	42	10.581	N 80 22 22.911 W
4763.00	91.11	348.21	955.63	3803.70	-299.36	439361.82	1754358.20	39	42	10.881	N 80 22 22.992 W
4792.00	91.14	347.53	955.06	3832.05	-305.45	439390.23	1754352.38	39	42	11.161	N 80 22 23.070 W
4801.00	91.21	347.70	954.87	3840.83	-307.38	439399.04	1754350.54	39	42	11.248	N 80 22 23.095 W
4828.00	91.88	347.92	954.14	3867.22	-313.08	439425.47	1754345.10	39	42	11.509	N 80 22 23.168 W
4832.00	91.98	347.95	954.01	3871.12	-313.92	439429.39	1754344.30	39	42	11.548	N 80 22 23.179 W
4864.00	92.35	348.60	952.80	3902.43	-320.42	439460.76	1754338.11	39	42	11.857	N 80 22 23.262 W
4895.00	90.87	349.64	951.93	3932.86	-326.27	439491.25	1754332.55	39	42	12.158	N 80 22 23.337 W
4927.00	90.77	349.83	951.47	3964.35	-331.97	439522.78	1754327.16	39	42	12.469	N 80 22 23.410 W
4959.00	89.87	349.37	951.29	3995.82	-337.74	439554.31	1754321.69	39	42	12.780	N 80 22 23.483 W
4990.00	89.30	349.66	951.52	4026.30	-343.39	439584.85	1754316.34	39	42	13.081	N 80 22 23.556 W
5022.00	89.60	349.56	951.82	4057.78	-349.16	439616.37	1754310.88	39	42	13.392	N 80 22 23.629 W
5053.00	87.48	348.80	952.61	4088.21	-354.97	439646.87	1754305.35	39	42	13.693	N 80 22 23.704 W
5085.00	85.56	347.57	954.56	4119.48	-361.51	439678.19	1754299.12	39	42	14.002	N 80 22 23.788 W
5117.00	87.62	348.50	956.46	4150.72	-368.13	439709.50	1754292.80	39	42	14.311	N 80 22 23.872 W
5148.00	89.23	349.16	957.31	4181.12	-374.14	439739.96	1754287.09	39	42	14.612	N 80 22 23.949 W
5180.00	90.70	349.93	957.33	4212.59	-379.94	439771.48	1754281.59	39	42	14.923	N 80 22 24.023 W
5211.00	90.44	349.86	957.02	4243.11	-385.38	439802.05	1754276.45	39	42	15.224	N 80 22 24.093 W
5243.00	91.44	349.87	956.50	4274.61	-391.01	439833.60	1754271.13	39	42	15.535	N 80 22 24.165 W
5275.00	90.84	350.14	955.86	4306.11	-396.57	439865.16	1754265.88	39	42	15.847	N 80 22 24.236 W
5306.00	91.11	350.18	955.33	4336.65	-401.86	439895.75	1754260.88	39	42	16.149	N 80 22 24.304 W
5338.00	91.95	350.38	954.48	4368.18	-407.26	439927.33	1754255.78	39	42	16.460	N 80 22 24.373 W
5369.00	92.38	350.34	953.31	4398.72	-412.45	439957.92	1754250.89	39	42	16.762	N 80 22 24.439 W
5420.00	93.00	350.34	950.91	4448.94	-421.00	440008.22	1754242.83	39	42	17.259	N 80 22 24.549 W
5881.80	93.00	350.34	926.75	4903.57	-498.38	440463.58	1754169.86	39	42	21.752	N 80 22 25.539 W

Annotation

MD ft	TVD ft	
4828.00	954.14	Projection to Bit

MONONGALIA 1537N



CNX Gas Company, LLC

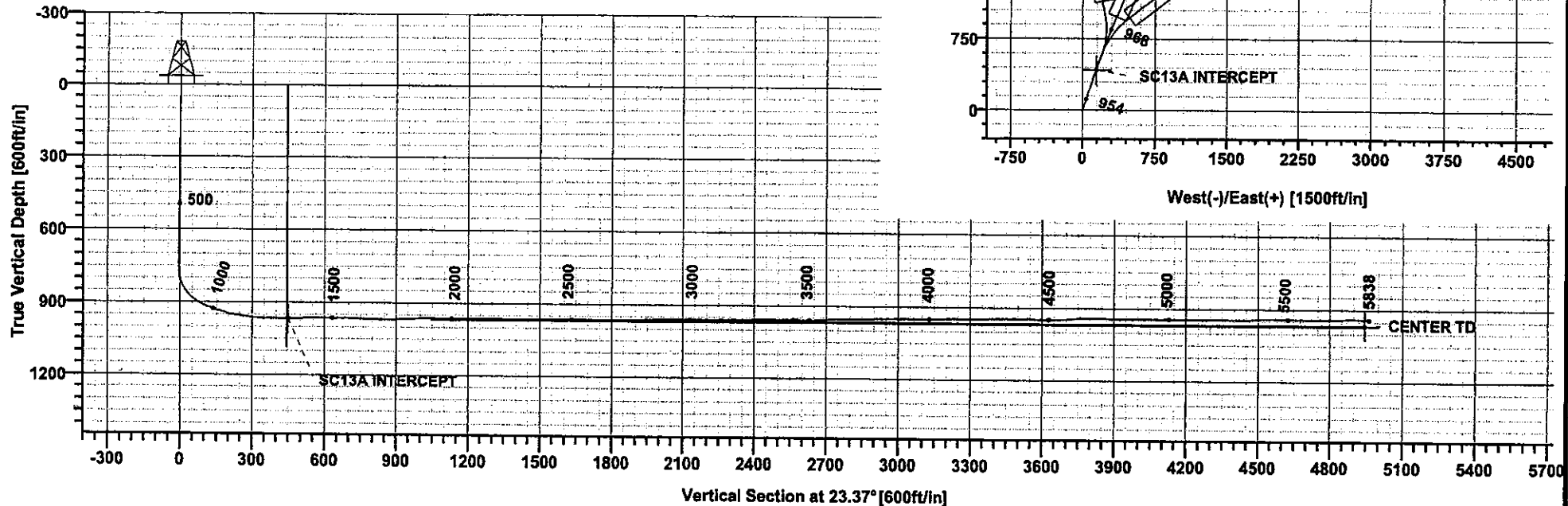
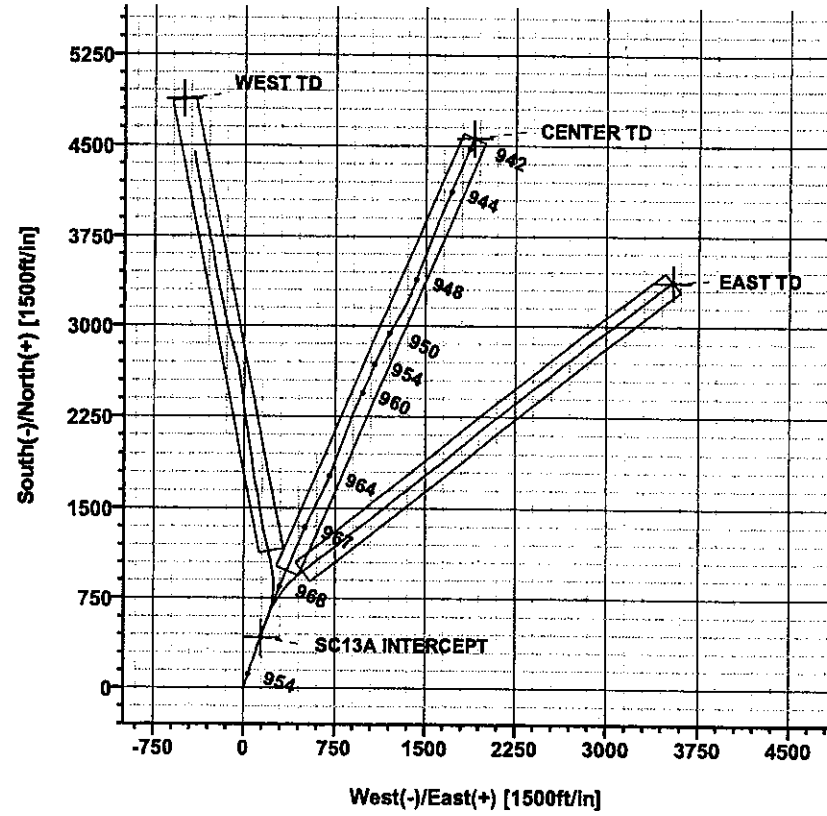
Field: MONONGALIA COUNTY, WV
 Site: SC-13A WELL LOCATION
 Well: ACCESS SC-13A
 Wellpath: SC-13 CENTER



TARGET DETAILS						
Name	TVD	+N/-S	+E/-W	Northing	Easting	Shape
WEST TD	966.00	4880.60	-505.89	440440.68	1764162.34	Rectangle (3800x200)
CENTER TD	966.00	4564.57	1909.86	440101.22	1756574.50	Rectangle (3900x200)
SC13A INTERCEPT	966.00	428.52	145.19	435982.49	1754769.97	Circle (Radius: 1)
EAST TD	966.00	3369.88	3543.31	438890.73	1758196.48	Rectangle (3881x200)

SITE DETAILS
 SC-13A WELL LOCATION
 Monongalia County, WV
 Site Centre Northing: 435,555.40
 Easting: 1,754,620.63
 Ground Level: 1203.65
 GL + 8 RKB: 1211.65
 Convergence: -0.56

Plot Date: 4/23/2007
 By: Carl Bakay
 Scientific Drilling, Inc.
 800-676-7302
 carl.bakay@scientificdrilling.com



AUG 1 2007



Scientific Drilling Survey Report



Company: CNX Gas Company, LLC Field: MONONGALIA COUNTY, WV Site: SC-13A WELL LOCATION Well: ACCESS SC-13A Wellpath: SC13 CENTER	Date: 5/15/2007 Time: 15:56:04 Page: 1 Co-ordinate(NE) Reference: Well: ACCESS SC-13A, True North Vertical (TVD) Reference: GL 1203.65 + 8 1211.7 Section (VS) Reference: Well (0.00N,0.00E,23.37Azi) Survey Calculation Method: Minimum Curvature Db: Sybase
--	---

Field: MONONGALIA COUNTY, WV Northern West Virginia and Pennsylvania Operations USA Map System: US State Plane Coordinate System 1927 Geo Datum: NAD27 (Clarke 1866) Sys Datum: Mean Sea Level	Map Zone: West Virginia, Northern Zone Coordinate System: Well Centre Geomagnetic Model: igrf2005
---	--

Site: SC-13A WELL LOCATION			
Monongalia County, WV			
Site Position:	Northing: 435555.40 ft	Latitude: 39 41 33.287 N	
From: Map	Easting: 1754620.63 ft	Longitude: 80 22 19.162 W	
Position Uncertainty: 0.00 ft		North Reference: True	
Ground Level: 1203.65 ft		Grid Convergence: -0.56 deg	

Well: ACCESS SC-13A	Slot Name:
Well Position: +N/-S 0.00 ft Northing: 435555.40 ft Latitude: 39 41 33.287 N +E/-W 0.00 ft Easting: 1754620.63 ft Longitude: 80 22 19.162 W	Position Uncertainty: 0.00 ft

Wellpath: SC13 CENTER	Drilled From: SC13 WEST
Current Datum: GL 1203.65 + 8	Tie-on Depth: 1545.00 ft
Magnetic Data: 4/23/2007	Above System Datum: Mean Sea Level
Field Strength: 53317 nT	Declination: -8.56 deg
Vertical Section: Depth From (TVD)	Mag Dip Angle: 67.76 deg
ft	+N/-S +E/-W Direction
0.00	ft ft deg
0.00	0.00 0.00 23.37

Survey: Survey #1	Start Date: 5/4/2007
Company: SDI	Engineer: Carl Bakay
Tool: MWD-SDI-SYS, Scientific MWD Systematic	Tied-to: User Defined

Survey: Survey #1

MD ft	Incl deg	Azim deg	TVD ft	+N/-S ft	+E/-W ft	VS ft	DLS deg/100ft	Build deg/100ft	Turn deg/100ft	Tool/Comment
1545.00	89.90	15.62	964.59	642.93	221.33	677.98	0.00	0.00	0.00	MWD-SDI-SYS
1576.00	88.02	17.64	965.15	672.63	230.20	708.76	8.90	-6.06	6.52	MWD-SDI-SYS
1608.00	88.08	19.32	966.24	702.96	240.33	740.62	5.25	0.19	5.25	MWD-SDI-SYS
1639.00	88.49	21.67	967.17	731.98	251.18	771.57	7.69	1.32	7.58	MWD-SDI-SYS
1671.00	88.49	22.01	968.01	761.67	263.08	803.54	1.06	0.00	1.06	MWD-SDI-SYS
1703.00	89.56	22.77	968.55	791.26	275.27	835.53	4.10	3.34	2.37	MWD-SDI-SYS
1734.00	90.44	22.66	968.55	819.85	287.24	866.53	2.86	2.84	-0.35	MWD-SDI-SYS
1766.00	91.17	22.45	968.11	849.40	299.51	898.52	2.37	2.28	-0.66	MWD-SDI-SYS
1797.00	92.01	23.51	967.25	877.93	311.61	929.51	4.36	2.71	3.42	MWD-SDI-SYS
1829.00	92.28	23.27	966.05	907.28	324.31	961.49	1.13	0.84	-0.75	MWD-SDI-SYS
1861.00	92.79	23.34	964.63	936.64	336.95	993.46	1.61	1.59	0.22	MWD-SDI-SYS
1892.00	91.14	23.34	963.57	965.08	349.23	1024.44	5.32	-5.32	0.00	MWD-SDI-SYS
1924.00	88.89	22.59	963.56	994.55	361.71	1056.43	7.41	-7.03	-2.34	MWD-SDI-SYS
1955.00	88.52	22.17	964.26	1023.20	373.51	1087.42	1.81	-1.19	-1.35	MWD-SDI-SYS
1987.00	89.12	22.40	964.92	1052.81	385.64	1119.41	2.01	1.87	0.72	MWD-SDI-SYS
2019.00	89.36	22.82	965.34	1082.34	397.95	1151.40	1.51	0.75	1.31	MWD-SDI-SYS
2050.00	90.77	22.61	965.31	1110.94	409.92	1182.40	4.60	4.55	-0.68	MWD-SDI-SYS
2082.00	89.83	22.08	965.14	1140.54	422.08	1214.39	3.37	-2.94	-1.66	MWD-SDI-SYS
2113.00	90.71	22.07	965.00	1169.26	433.73	1245.39	2.84	2.84	-0.03	MWD-SDI-SYS
2145.00	91.01	23.14	964.52	1198.80	446.03	1277.38	3.47	0.94	3.34	MWD-SDI-SYS
2177.00	88.42	23.46	964.67	1228.19	458.69	1309.38	8.16	-8.09	1.00	MWD-SDI-SYS
2208.00	88.12	22.60	965.61	1256.70	470.81	1340.36	2.94	-0.97	-2.77	MWD-SDI-SYS
2240.00	88.09	22.94	966.67	1286.19	483.19	1372.34	1.07	-0.09	1.06	MWD-SDI-SYS
2273.00	88.62	24.53	967.62	1316.39	496.46	1405.33	5.08	1.61	4.82	MWD-SDI-SYS

MONONGALIA 1537N



Scientific Drilling Survey Report



Company: CNX Gas Company, LLC Field: MONONGALIA COUNTY, WV Site: SC-13A WELL LOCATION Well: ACCESS SC-13A Wellpath: SC13 CENTER	Date: 5/15/2007 Time: 15:56:04 Page: 2 Co-ordinate(NE) Reference: Well: ACCESS SC-13A, True North Vertical (TVD) Reference: GL 1203.65 + 8 1211.7 Section (VS) Reference: Well (0.00N,0.00E,23.37Azi) Survey Calculation Method: Minimum Curvature Db: Sybase
--	---

Survey: Survey #1

MD ft	Incl deg	Azim deg	TVD ft	+N-S ft	+E-W ft	VS ft	DLS deg/100ft	Build deg/100ft	Turn deg/100ft	Tool/Comment
2304.00	92.69	24.77	967.26	1344.56	509.39	1436.31	13.15	13.13	0.77	MWD-SDI-SYS
2336.00	92.95	23.85	965.69	1373.68	522.55	1468.27	2.98	0.81	-2.87	MWD-SDI-SYS
2367.00	89.50	24.30	965.02	1401.98	535.19	1499.25	11.22	-11.13	1.45	MWD-SDI-SYS
2399.00	89.83	25.14	965.21	1431.04	548.57	1531.24	2.82	1.03	2.62	MWD-SDI-SYS
2430.00	90.50	25.70	965.12	1459.04	561.88	1562.22	2.82	2.16	1.81	MWD-SDI-SYS
2462.00	90.30	26.02	964.90	1487.84	575.83	1594.19	1.18	-0.62	1.00	MWD-SDI-SYS
2494.00	90.03	26.42	964.81	1516.54	589.97	1626.15	1.51	-0.84	1.25	MWD-SDI-SYS
2525.00	90.13	26.50	964.76	1544.29	603.78	1657.11	0.41	0.32	0.26	MWD-SDI-SYS
2557.00	89.66	26.53	964.82	1572.93	618.07	1689.06	1.47	-1.47	0.09	MWD-SDI-SYS
2588.00	89.16	26.79	965.14	1600.63	631.98	1720.00	1.82	-1.61	0.84	MWD-SDI-SYS
2652.00	89.80	24.03	965.72	1658.43	659.44	1783.95	4.43	1.00	-4.31	MWD-SDI-SYS
2683.00	89.90	24.53	965.80	1686.69	672.18	1814.95	1.64	0.32	1.61	MWD-SDI-SYS
2715.00	90.60	24.15	965.66	1715.85	685.37	1846.95	2.49	2.19	-1.19	MWD-SDI-SYS
2746.00	91.48	21.68	965.10	1744.39	697.44	1877.94	8.46	2.84	-7.97	MWD-SDI-SYS
2778.00	92.25	21.68	964.06	1774.11	709.25	1909.91	2.41	2.41	0.00	MWD-SDI-SYS
2810.00	92.25	21.68	962.80	1803.83	721.07	1941.87	0.00	0.00	0.00	MWD-SDI-SYS
2841.00	90.57	21.71	962.04	1832.62	732.52	1972.84	5.42	-5.42	0.10	MWD-SDI-SYS
2873.00	91.07	21.19	961.58	1862.40	744.22	2004.82	2.25	1.56	-1.62	MWD-SDI-SYS
2905.00	91.58	20.87	960.84	1892.26	755.70	2036.79	1.88	1.59	-1.00	MWD-SDI-SYS
2937.00	89.80	20.77	960.46	1922.17	767.08	2068.75	5.57	-5.56	-0.31	MWD-SDI-SYS
2968.00	90.67	19.72	960.33	1951.25	777.80	2099.70	4.40	2.81	-3.39	MWD-SDI-SYS
3000.00	89.16	21.81	960.38	1981.17	789.15	2131.67	8.06	-4.72	6.53	MWD-SDI-SYS
3031.00	89.97	21.40	960.61	2009.99	800.56	2162.65	2.93	2.61	-1.32	MWD-SDI-SYS
3063.00	91.11	21.15	960.31	2039.81	812.17	2194.63	3.65	3.56	-0.78	MWD-SDI-SYS
3094.00	88.52	22.70	960.41	2068.56	823.74	2225.62	9.74	-8.35	5.00	MWD-SDI-SYS
3126.00	88.86	21.51	961.14	2098.20	835.78	2257.60	3.87	1.06	-3.72	MWD-SDI-SYS
3158.00	89.90	21.72	961.49	2127.95	847.57	2289.58	3.32	3.25	0.66	MWD-SDI-SYS
3189.00	89.77	21.18	961.58	2156.80	858.91	2320.56	1.79	-0.42	-1.74	MWD-SDI-SYS
3221.00	91.24	20.83	961.30	2186.67	870.38	2352.53	4.72	4.59	-1.09	MWD-SDI-SYS
3253.00	92.85	20.38	960.16	2216.61	881.63	2384.48	5.22	5.03	-1.41	MWD-SDI-SYS
3284.00	89.90	21.69	959.41	2245.53	892.75	2415.44	10.41	-9.52	4.23	MWD-SDI-SYS
3316.00	91.51	21.89	959.02	2275.24	904.63	2447.42	5.07	5.03	0.62	MWD-SDI-SYS
3347.00	89.87	24.15	958.64	2303.77	916.75	2478.42	9.01	-5.29	7.29	MWD-SDI-SYS
3379.00	91.18	24.22	958.35	2332.96	929.86	2510.41	4.10	4.09	0.22	MWD-SDI-SYS
3411.00	88.99	23.74	958.30	2362.19	942.86	2542.41	7.01	-6.84	-1.50	MWD-SDI-SYS
3443.00	86.84	24.10	959.47	2391.42	955.83	2574.38	6.81	-6.72	1.12	MWD-SDI-SYS
3475.00	89.53	24.35	960.48	2420.59	968.95	2606.36	8.44	8.41	0.78	MWD-SDI-SYS
3506.00	90.84	23.95	960.38	2448.87	981.63	2637.36	4.42	4.23	-1.29	MWD-SDI-SYS
3538.00	91.51	23.86	959.72	2478.12	994.60	2669.35	2.11	2.09	-0.28	MWD-SDI-SYS
3570.00	92.62	23.84	958.57	2507.37	1007.53	2701.32	3.47	3.47	-0.06	MWD-SDI-SYS
3601.00	94.37	24.38	956.68	2535.61	1020.17	2732.26	5.91	5.65	1.74	MWD-SDI-SYS
3633.00	91.41	23.92	955.07	2564.77	1033.24	2764.22	9.36	-9.25	-1.44	MWD-SDI-SYS
3664.00	89.97	24.09	954.70	2593.09	1045.85	2795.21	4.68	-4.65	0.55	MWD-SDI-SYS
3694.00	90.34	23.80	954.61	2620.50	1058.03	2825.21	1.57	1.23	-0.97	MWD-SDI-SYS
3728.00	89.87	23.19	954.55	2651.68	1071.58	2859.21	2.26	-1.38	-1.79	MWD-SDI-SYS
3759.00	90.94	22.88	954.33	2680.21	1083.71	2890.21	3.59	3.45	-1.00	MWD-SDI-SYS
3791.00	92.46	23.18	953.38	2709.65	1096.22	2922.19	4.84	4.75	0.94	MWD-SDI-SYS
3822.00	91.31	23.30	952.36	2738.12	1108.45	2953.17	3.73	-3.71	0.39	MWD-SDI-SYS
3853.00	91.31	23.88	951.66	2766.52	1120.85	2984.17	1.87	0.00	1.87	MWD-SDI-SYS
3884.00	90.47	24.41	951.17	2794.80	1133.53	3015.16	3.20	-2.71	1.71	MWD-SDI-SYS
3916.00	90.20	24.77	950.99	2823.90	1146.85	3047.15	1.41	-0.84	1.12	MWD-SDI-SYS
3947.00	89.56	26.57	951.05	2851.84	1160.27	3078.12	6.16	-2.06	5.81	MWD-SDI-SYS
3979.00	90.77	27.02	950.96	2880.40	1174.70	3110.07	4.03	3.78	1.41	MWD-SDI-SYS



Scientific Drilling Survey Report



Company: CNX Gas Company, LLC
 Field: MONONGALIA COUNTY, WV
 Site: SC-13A WELL LOCATION
 Well: ACCESS SC-13A
 Wellpath: SC13 CENTER

Date: 5/15/2007 Time: 15:56:04 Page: 3
 Co-ordinate(N/E) Reference: Well: ACCESS SC-13A, True North
 Vertical (TVD) Reference: GL 1203.65 + 8 1211.7
 Section (VS) Reference: Well (0.00N,0.00E,23.37Azi)
 Survey Calculation Method: Minimum Curvature Db: Sybase

Survey: Survey #1

MD ft	Incl deg	Azim deg	TVD ft	+N/-S ft	+E/-W ft	VS ft	DLS deg/100ft	Build deg/100ft	Turn deg/100ft	Tool/Comment
4011.00	91.07	29.22	950.45	2908.62	1189.78	3141.95	6.94	0.94	6.87	MWD-SDI-SYS
4042.00	89.93	28.14	950.18	2935.81	1204.66	3172.81	5.07	-3.68	-3.48	MWD-SDI-SYS
4074.00	91.11	28.37	949.88	2964.00	1219.80	3204.70	3.76	3.69	0.72	MWD-SDI-SYS
4105.00	91.61	30.19	949.15	2991.03	1234.96	3235.52	6.09	1.61	5.87	MWD-SDI-SYS
4137.00	90.03	29.09	948.69	3018.84	1250.78	3267.33	6.02	-4.94	-3.44	MWD-SDI-SYS
4169.00	90.00	29.60	948.68	3046.73	1266.47	3299.15	1.60	-0.09	1.59	MWD-SDI-SYS
4200.00	90.13	30.49	948.65	3073.57	1281.99	3329.94	2.90	0.42	2.87	MWD-SDI-SYS
4232.00	91.04	31.19	948.32	3101.04	1298.39	3361.67	3.59	2.84	2.19	MWD-SDI-SYS
4263.00	91.14	28.75	947.73	3127.89	1313.87	3392.45	7.88	0.32	-7.87	MWD-SDI-SYS
4295.00	91.24	28.13	947.07	3156.02	1329.11	3424.32	1.96	0.31	-1.94	MWD-SDI-SYS
4326.00	90.77	25.90	946.52	3183.63	1343.19	3455.25	7.35	-1.52	-7.19	MWD-SDI-SYS
4358.00	89.50	23.61	946.45	3212.69	1356.58	3487.24	8.18	-3.97	-7.16	MWD-SDI-SYS
4389.00	89.06	22.82	946.84	3241.18	1368.80	3518.24	2.92	-1.42	-2.55	MWD-SDI-SYS
4421.00	89.19	23.25	947.33	3270.62	1381.32	3550.23	1.40	0.41	1.34	MWD-SDI-SYS
4453.00	88.25	20.78	948.04	3300.28	1393.31	3582.21	8.26	-2.94	-7.72	MWD-SDI-SYS
4484.00	88.46	20.41	948.93	3329.28	1404.21	3613.16	1.37	0.68	-1.19	MWD-SDI-SYS
4516.00	90.97	20.86	949.09	3359.23	1415.49	3645.12	7.97	7.84	1.41	MWD-SDI-SYS
4547.00	92.42	20.39	948.17	3388.23	1426.40	3676.07	4.92	4.68	-1.52	MWD-SDI-SYS
4579.00	93.06	20.72	946.64	3418.16	1437.63	3708.00	2.25	2.00	1.03	MWD-SDI-SYS
4611.00	93.63	20.69	944.78	3448.04	1448.92	3739.91	1.78	1.78	-0.09	MWD-SDI-SYS
4642.00	92.05	20.94	943.24	3476.98	1459.92	3770.84	5.16	-5.10	0.81	MWD-SDI-SYS
4675.00	90.40	21.14	942.53	3507.77	1471.77	3803.80	5.04	-5.00	0.61	MWD-SDI-SYS
4707.00	89.93	22.17	942.44	3537.51	1483.58	3835.79	3.54	-1.47	3.22	MWD-SDI-SYS
4738.00	88.35	20.50	942.91	3566.38	1494.85	3866.76	7.42	-5.10	-5.39	MWD-SDI-SYS
4770.00	87.72	20.14	944.00	3596.37	1505.96	3898.70	2.27	-1.97	-1.12	MWD-SDI-SYS
4801.00	89.03	20.30	944.88	3625.45	1516.67	3929.64	4.26	4.23	0.52	MWD-SDI-SYS
4833.00	90.20	20.22	945.10	3655.47	1527.75	3961.59	3.66	3.66	-0.25	MWD-SDI-SYS
4865.00	90.94	20.13	944.78	3685.50	1538.79	3993.54	2.33	2.31	-0.28	MWD-SDI-SYS
4896.00	90.54	20.47	944.38	3714.58	1549.54	4024.49	1.69	-1.29	1.10	MWD-SDI-SYS
4928.00	89.36	20.25	944.41	3744.58	1560.67	4056.45	3.75	-3.69	-0.69	MWD-SDI-SYS
4959.00	90.91	20.97	944.33	3773.59	1571.58	4087.41	5.51	5.00	2.32	MWD-SDI-SYS
4991.00	90.03	21.20	944.07	3803.45	1583.10	4119.38	2.84	-2.75	0.72	MWD-SDI-SYS
5023.00	89.40	21.37	944.23	3833.26	1594.71	4151.36	2.04	-1.97	0.53	MWD-SDI-SYS
5054.00	89.46	21.68	944.54	3862.10	1606.09	4182.34	1.02	0.19	1.00	MWD-SDI-SYS
5086.00	89.26	22.32	944.90	3891.77	1618.07	4214.33	2.10	-0.62	2.00	MWD-SDI-SYS
5117.00	89.70	23.03	945.18	3920.37	1630.02	4245.33	2.69	1.42	2.29	MWD-SDI-SYS
5149.00	90.60	23.24	945.09	3949.80	1642.59	4277.33	2.89	2.81	0.66	MWD-SDI-SYS
5181.00	89.53	22.69	945.06	3979.26	1655.08	4309.33	3.76	-3.34	-1.72	MWD-SDI-SYS
5212.00	89.06	23.33	945.44	4007.79	1667.20	4340.32	2.56	-1.52	2.06	MWD-SDI-SYS
5244.00	89.70	23.96	945.79	4037.10	1680.03	4372.32	2.81	2.00	1.97	MWD-SDI-SYS
5275.00	90.81	24.35	945.65	4065.39	1692.71	4403.32	3.80	3.58	1.26	MWD-SDI-SYS
5307.00	91.41	23.79	945.03	4094.60	1705.76	4435.31	2.56	1.87	-1.75	MWD-SDI-SYS
5339.00	91.71	22.03	944.16	4124.06	1718.22	4467.29	5.58	0.94	-5.50	MWD-SDI-SYS
5370.00	92.21	22.29	943.10	4152.76	1729.90	4498.27	1.82	1.61	0.84	MWD-SDI-SYS
5402.00	91.75	22.42	941.99	4182.33	1742.07	4530.25	1.49	-1.44	0.41	MWD-SDI-SYS
5433.00	90.71	22.65	941.33	4210.96	1753.94	4561.23	3.44	-3.35	0.74	MWD-SDI-SYS
5465.00	89.63	23.42	941.23	4240.41	1766.46	4593.23	4.14	-3.37	2.41	MWD-SDI-SYS
5496.00	87.61	22.98	941.98	4268.89	1778.67	4624.22	6.67	-6.52	-1.42	MWD-SDI-SYS
5528.00	87.81	23.89	943.26	4298.23	1791.39	4656.20	2.91	0.62	2.84	MWD-SDI-SYS
5560.00	89.63	23.71	943.97	4327.50	1804.30	4688.19	5.72	5.69	-0.56	MWD-SDI-SYS
5591.00	90.91	23.69	943.82	4355.88	1816.76	4719.18	4.13	4.13	-0.06	MWD-SDI-SYS
5623.00	91.14	24.15	943.25	4385.13	1829.73	4751.18	1.61	0.72	1.44	MWD-SDI-SYS
5654.00	90.84	22.11	942.72	4413.63	1841.91	4782.17	6.65	-0.97	-6.58	MWD-SDI-SYS

MONONGALIA 1537 N



Scientific Drilling Survey Report



Company: CNX Gas Company, LLC Field: MONONGALIA COUNTY, WV Site: SC-13A WELL LOCATION Well: ACCESS SC-13A Wellpath: SC13 CENTER	Date: 5/15/2007 Time: 15:56:04 Page: 4 Co-ordinate(N/E) Reference: Well: ACCESS SC-13A, True North Vertical (TYD) Reference: GL 1203.65 + 8 1211.7 Section (VS) Reference: Well (0.00N,0.00E,23.37Azi) Survey Calculation Method: Minimum Curvature Db: Sybase
--	--

Survey: Survey #1

MD ft	Incl deg	Azim deg	TYD ft	+N/-S ft	+E/-W ft	VS ft	DLS deg/100ft	Build deg/100ft	Turn deg/100ft	Tool/Comment
5686.00	90.00	22.50	942.48	4443.24	1854.05	4814.16	2.89	-2.62	1.22	MWD-SDI-SYS
5717.00	90.91	22.69	942.24	4471.85	1865.96	4845.16	3.00	2.94	0.61	MWD-SDI-SYS
5742.00	90.81	22.69	941.86	4494.92	1875.60	4870.16	0.40	-0.40	0.00	MWD-SDI-SYS
5773.00	89.70	22.74	941.72	4523.51	1887.57	4901.15	3.58	-3.58	0.16	MWD-SDI-SYS
5792.00	89.63	22.87	941.83	4541.03	1894.94	4920.15	0.78	-0.37	0.68	MWD-SDI-SYS
5830.00	89.60	22.90	942.09	4576.03	1909.71	4958.15	0.11	-0.08	0.08	MWD-SDI-SYS



Scientific Drilling Survey Report - Geographic



Company: CNX Gas Company, LLC	Date: 5/15/2007	Time: 15:55:20	Page: 1
Field: MONONGALIA COUNTY, WV	Co-ordinate(NE) Reference: Well: ACCESS SC-13A, True North		
Site: SC-13A WELL LOCATION	Vertical (TYD) Reference: GL 1203.65 + 8 1211.7		
Well: ACCESS SC-13A	Section (YS) Reference: Well (0.00N,0.00E,23.37Azi)		
Wellpath: SC13 CENTER	Survey Calculation Method: Minimum Curvature		Db: Sybase

Field: MONONGALIA COUNTY, WV Northern West Virginia and Pennsylvania Operations USA	Map Zone: West Virginia, Northern Zone
Map System: S State Plane Coordinate System 1927	Coordinate System: Well Centre
Geo Datum: NAD27 (Clarke 1866)	Geomagnetic Model: igrf2005
Sys Datum: Mean Sea Level	

Site: SC-13A WELL LOCATION			
Monongalia County, WV			
Site Position:	Northing: 435555.40 ft	Latitude: 39 41 33.287 N	
From: Map	Easting: 1754620.63 ft	Longitude: 80 22 19.162 W	
Position Uncertainty: 0.00 ft		North Reference: True	
Ground Level: 1203.65 ft		Grid Convergence: -0.56 deg	

Well: ACCESS SC-13A	Slot Name:
Well Position: +N/-S 0.00 ft	Northing: 435555.40 ft
+E/-W 0.00 ft	Easting: 1754620.63 ft
Position Uncertainty: 0.00 ft	
	Latitude: 39 41 33.287 N
	Longitude: 80 22 19.162 W

Wellpath: SC13 CENTER			
Current Datum: GL 1203.65 + 8	Height: 1211.65 ft	Drilled From: SC13 WEST	
Magnetic Data: 4/23/2007		Te-on Depth: 1545.00 ft	
Field Strength: 53317 nT		Above System Datum: Mean Sea Level	
Vertical Section: Depth From (TYD)	+N/-S	Declination: -8.56 deg	
ft	ft	Mag Dip Angle: 67.76 deg	
		+E/-W	Direction
		ft	deg
0.00	0.00	0.00	23.37

Survey: Survey #1	Start Date: 5/4/2007
Company: SDI	Engineer: Carl Bakay
Tool: MWD-SDI-SYS, Scientific MWD Systematic	Tied-to: User Defined

Survey: Survey #1

MD ft	Incl deg	Azim deg	TYD ft	+N/-S ft	+E/-W ft	Map Northing ft	Map Easting ft	Latitude			Longitude		
								Deg	Min	Sec	Deg	Min	Sec
1545.00	89.90	15.62	964.59	642.93	221.33	436196.15	1754848.19	39	41	39.641 N	80	22	16.331 W
1576.00	88.02	17.64	965.15	672.63	230.20	436225.76	1754857.34	39	41	39.935 N	80	22	16.217 W
1608.00	88.08	19.32	966.24	702.96	240.33	436255.99	1754867.78	39	41	40.235 N	80	22	16.087 W
1639.00	88.49	21.67	967.17	731.98	251.18	436284.91	1754878.90	39	41	40.522 N	80	22	15.949 W
1671.00	88.49	22.01	968.01	761.67	263.08	436314.48	1754891.09	39	41	40.815 N	80	22	15.796 W
1703.00	89.56	22.77	968.55	791.26	275.27	436343.95	1754903.57	39	41	41.107 N	80	22	15.640 W
1734.00	90.44	22.66	968.55	819.85	287.24	436372.42	1754915.81	39	41	41.390 N	80	22	15.487 W
1766.00	91.17	22.45	968.11	849.40	299.51	436401.85	1754928.37	39	41	41.682 N	80	22	15.330 W
1797.00	92.01	23.51	967.25	877.93	311.61	436430.26	1754940.75	39	41	41.964 N	80	22	15.175 W
1829.00	92.28	23.27	966.05	907.28	324.31	436459.49	1754953.73	39	41	42.254 N	80	22	15.013 W
1861.00	92.79	23.34	964.63	936.64	336.95	436488.72	1754966.66	39	41	42.544 N	80	22	14.851 W
1892.00	91.14	23.34	963.57	965.08	349.23	436517.05	1754979.21	39	41	42.825 N	80	22	14.694 W
1924.00	88.89	22.59	963.56	994.55	361.71	436546.39	1754991.98	39	41	43.117 N	80	22	14.534 W
1955.00	88.52	22.17	964.26	1023.20	373.51	436574.93	1755004.06	39	41	43.400 N	80	22	14.384 W
1987.00	89.12	22.40	964.92	1052.81	385.64	436604.41	1755016.47	39	41	43.692 N	80	22	14.228 W
2019.00	89.36	22.82	965.34	1082.34	397.95	436633.83	1755029.06	39	41	43.984 N	80	22	14.071 W
2050.00	90.77	22.61	965.31	1110.94	409.92	436662.31	1755041.31	39	41	44.267 N	80	22	13.918 W
2082.00	89.83	22.08	965.14	1140.54	422.08	436691.78	1755053.76	39	41	44.560 N	80	22	13.762 W
2113.00	90.71	22.07	965.00	1169.26	433.73	436720.40	1755065.69	39	41	44.843 N	80	22	13.613 W
2145.00	91.01	23.14	964.52	1198.80	446.03	436749.81	1755078.27	39	41	45.135 N	80	22	13.456 W
2177.00	88.42	23.46	964.67	1228.19	458.69	436779.08	1755091.22	39	41	45.426 N	80	22	13.294 W
2208.00	88.12	22.60	965.61	1256.70	470.81	436807.47	1755103.61	39	41	45.708 N	80	22	13.139 W
2240.00	88.09	22.94	966.67	1286.19	483.19	436836.84	1755116.28	39	41	45.999 N	80	22	12.980 W

MONONGALIA 1537M



Scientific Drilling
Survey Report - Geographic



Company: CNX Gas Company, LLC	Date: 5/15/2007	Time: 15:55:20	Page: 2
Field: MONONGALIA COUNTY, WV	Co-ordinate(N/E) Reference: Well: ACCESS SC-13A, True North		
Site: SC-13A WELL LOCATION	Vertical (TVD) Reference: GL 1203.65 + 8 1211.7		
Well: ACCESS SC-13A	Section (VS) Reference: Well (0.00N,0.00E,23.37Azi)		
Wellpath: SC13 CENTER	Survey Calculation Method: Minimum Curvature		Db: Sybase

Survey: Survey #1

MD ft	Incl deg	Azim deg	TVD ft	+N/-S ft	+E/-W ft	Map		Latitude		Longitude					
						Northing ft	Easting ft	Deg	Min	Sec	Deg	Min	Sec		
2273.00	88.62	24.53	967.62	1316.39	496.46	436866.91	1755129.85	39	41	46.298	N	80	22	12.810	W
2304.00	92.69	24.77	967.26	1344.56	509.39	436894.95	1755143.04	39	41	46.576	N	80	22	12.645	W
2336.00	92.95	23.85	965.69	1373.68	522.55	436923.95	1755156.48	39	41	46.864	N	80	22	12.477	W
2367.00	89.50	24.30	965.02	1401.98	535.19	436952.11	1755169.40	39	41	47.143	N	80	22	12.315	W
2399.00	89.83	25.14	965.21	1431.04	548.57	436981.05	1755183.06	39	41	47.431	N	80	22	12.144	W
2430.00	90.50	25.70	965.12	1459.04	561.88	437008.92	1755196.64	39	41	47.707	N	80	22	11.974	W
2462.00	90.30	26.02	964.90	1487.84	575.83	437037.58	1755210.88	39	41	47.992	N	80	22	11.795	W
2494.00	90.03	26.42	964.81	1516.54	589.97	437066.14	1755225.29	39	41	48.276	N	80	22	11.614	W
2525.00	90.13	26.50	964.76	1544.29	603.78	437093.76	1755239.37	39	41	48.550	N	80	22	11.437	W
2557.00	89.66	26.53	964.82	1572.93	618.07	437122.26	1755253.94	39	41	48.833	N	80	22	11.255	W
2588.00	89.16	26.79	965.14	1600.63	631.98	437149.82	1755268.11	39	41	49.107	N	80	22	11.077	W
2652.00	89.80	24.03	965.72	1658.43	659.44	437207.35	1755296.13	39	41	49.678	N	80	22	10.725	W
2683.00	89.90	24.53	965.80	1686.69	672.18	437235.49	1755309.15	39	41	49.957	N	80	22	10.562	W
2715.00	90.60	24.15	965.66	1715.85	685.37	437264.51	1755322.62	39	41	50.246	N	80	22	10.394	W
2746.00	91.48	21.68	965.10	1744.39	697.44	437292.94	1755334.97	39	41	50.528	N	80	22	10.239	W
2778.00	92.25	21.68	964.06	1774.11	709.25	437322.54	1755347.07	39	41	50.821	N	80	22	10.088	W
2810.00	92.25	21.68	962.80	1803.83	721.07	437352.14	1755359.17	39	41	51.115	N	80	22	9.937	W
2841.00	90.57	21.71	962.04	1832.62	732.52	437380.82	1755370.91	39	41	51.400	N	80	22	9.790	W
2873.00	91.07	21.19	961.58	1862.40	744.22	437410.49	1755382.89	39	41	51.694	N	80	22	9.641	W
2905.00	91.58	20.87	960.84	1892.26	755.70	437440.24	1755394.66	39	41	51.989	N	80	22	9.494	W
2937.00	89.80	20.77	960.46	1922.17	767.08	437470.03	1755406.33	39	41	52.285	N	80	22	9.348	W
2968.00	90.67	19.72	960.33	1951.25	777.80	437499.01	1755417.33	39	41	52.572	N	80	22	9.211	W
3000.00	89.16	21.81	960.38	1981.17	789.15	437528.82	1755428.97	39	41	52.868	N	80	22	9.066	W
3031.00	89.97	21.40	960.61	2009.99	800.56	437557.53	1755440.66	39	41	53.153	N	80	22	8.920	W
3063.00	91.11	21.15	960.31	2039.81	812.17	437587.23	1755452.56	39	41	53.448	N	80	22	8.771	W
3094.00	88.52	22.70	960.41	2068.56	823.74	437615.87	1755464.41	39	41	53.732	N	80	22	8.623	W
3126.00	88.86	21.51	961.14	2098.20	835.78	437645.39	1755476.74	39	41	54.025	N	80	22	8.469	W
3158.00	89.90	21.72	961.49	2127.95	847.57	437675.02	1755488.81	39	41	54.319	N	80	22	8.318	W
3189.00	89.77	21.18	961.58	2156.80	858.91	437703.76	1755500.43	39	41	54.604	N	80	22	8.173	W
3221.00	91.24	20.83	961.30	2186.67	870.38	437733.52	1755512.19	39	41	54.899	N	80	22	8.026	W
3253.00	92.85	20.38	960.16	2216.61	881.63	437763.35	1755523.73	39	41	55.195	N	80	22	7.882	W
3284.00	89.90	21.69	959.41	2245.53	892.75	437792.16	1755535.14	39	41	55.481	N	80	22	7.740	W
3316.00	91.51	21.89	959.02	2275.24	904.63	437821.75	1755547.30	39	41	55.774	N	80	22	7.588	W
3347.00	89.87	24.15	958.64	2303.77	916.75	437850.16	1755559.70	39	41	56.056	N	80	22	7.433	W
3379.00	91.18	24.22	958.35	2332.96	929.86	437879.22	1755573.09	39	41	56.345	N	80	22	7.265	W
3411.00	88.99	23.74	958.30	2362.19	942.86	437908.33	1755586.38	39	41	56.634	N	80	22	7.099	W
3443.00	86.84	24.10	959.47	2391.42	955.83	437937.43	1755599.63	39	41	56.923	N	80	22	6.933	W
3475.00	89.53	24.35	960.48	2420.59	968.95	437966.47	1755613.03	39	41	57.211	N	80	22	6.765	W
3506.00	90.84	23.95	960.38	2448.87	981.63	437994.63	1755625.99	39	41	57.490	N	80	22	6.603	W
3538.00	91.51	23.86	959.72	2478.12	994.60	438023.75	1755639.23	39	41	57.780	N	80	22	6.437	W
3570.00	92.62	23.84	958.57	2507.37	1007.53	438052.87	1755652.45	39	41	58.069	N	80	22	6.272	W
3601.00	94.37	24.38	956.68	2535.61	1020.17	438080.99	1755665.36	39	41	58.348	N	80	22	6.110	W
3633.00	91.41	23.92	955.07	2564.77	1033.24	438110.02	1755678.72	39	41	58.636	N	80	22	5.943	W
3664.00	89.97	24.09	954.70	2593.09	1045.85	438138.21	1755691.60	39	41	58.916	N	80	22	5.781	W
3694.00	90.34	23.80	954.61	2620.50	1058.03	438165.51	1755704.04	39	41	59.187	N	80	22	5.625	W
3728.00	89.87	23.19	954.55	2651.68	1071.58	438196.56	1755717.90	39	41	59.495	N	80	22	5.452	W
3759.00	90.94	22.88	954.33	2680.21	1083.71	438224.97	1755730.31	39	41	59.777	N	80	22	5.297	W
3791.00	92.46	23.18	953.38	2709.65	1096.22	438254.28	1755743.10	39	42	0.068	N	80	22	5.137	W
3822.00	91.31	23.30	952.36	2738.12	1108.45	438282.63	1755755.60	39	42	0.349	N	80	22	4.980	W
3853.00	91.31	23.88	951.66	2766.52	1120.85	438310.91	1755768.28	39	42	0.630	N	80	22	4.821	W
3884.00	90.47	24.41	951.17	2794.80	1133.53	438339.07	1755781.23	39	42	0.909	N	80	22	4.659	W
3916.00	90.20	24.77	950.99	2823.90	1146.85	438368.04	1755794.83	39	42	1.197	N	80	22	4.489	W



Scientific Drilling Survey Report - Geographic



Company: CNX Gas Company, LLC Field: MONONGALIA COUNTY, WV Site: SC-13A WELL LOCATION Well: ACCESS SC-13A Wellpath: SC13 CENTER	Date: 5/15/2007 Time: 15:55:20 Page: 4 Co-ordinate(NE) Reference: Well: ACCESS SC-13A, True North Vertical (TVD) Reference: GL 1203.65 + 8 1211.7 Section (VS) Reference: Well (0.00N,0.00E,23.37Azi) Survey Calculation Method: Minimum Curvature Db: Sybase
---	--

Survey: Survey #1

MD ft	Incl deg	Azim deg	TVD ft	+N/-S ft	+E/-W ft	Map Northing ft	Map Easting ft	Latitude			Longitude				
								Deg	Min	Sec	Deg	Min	Sec		
5623.00	91.14	24.15	943.25	4385.13	1829.73	439922.56	1756492.84	39	42	16.627	N	80	21	55.750	W
5654.00	90.84	22.11	942.72	4413.63	1841.91	439950.95	1756505.29	39	42	16.909	N	80	21	55.595	W
5686.00	90.00	22.50	942.48	4443.24	1854.05	439980.43	1756517.72	39	42	17.201	N	80	21	55.439	W
5717.00	90.91	22.69	942.24	4471.85	1865.96	440008.93	1756529.91	39	42	17.484	N	80	21	55.287	W
5742.00	90.81	22.69	941.86	4494.92	1875.60	440031.90	1756539.77	39	42	17.712	N	80	21	55.163	W
5773.00	89.70	22.74	941.72	4523.51	1887.57	440060.38	1756552.02	39	42	17.995	N	80	21	55.010	W
5792.00	89.63	22.87	941.83	4541.03	1894.94	440077.82	1756559.55	39	42	18.168	N	80	21	54.916	W
5830.00	89.60	22.90	942.09	4576.03	1909.71	440112.68	1756574.67	39	42	18.514	N	80	21	54.727	W



CNX Gas Company, LLC

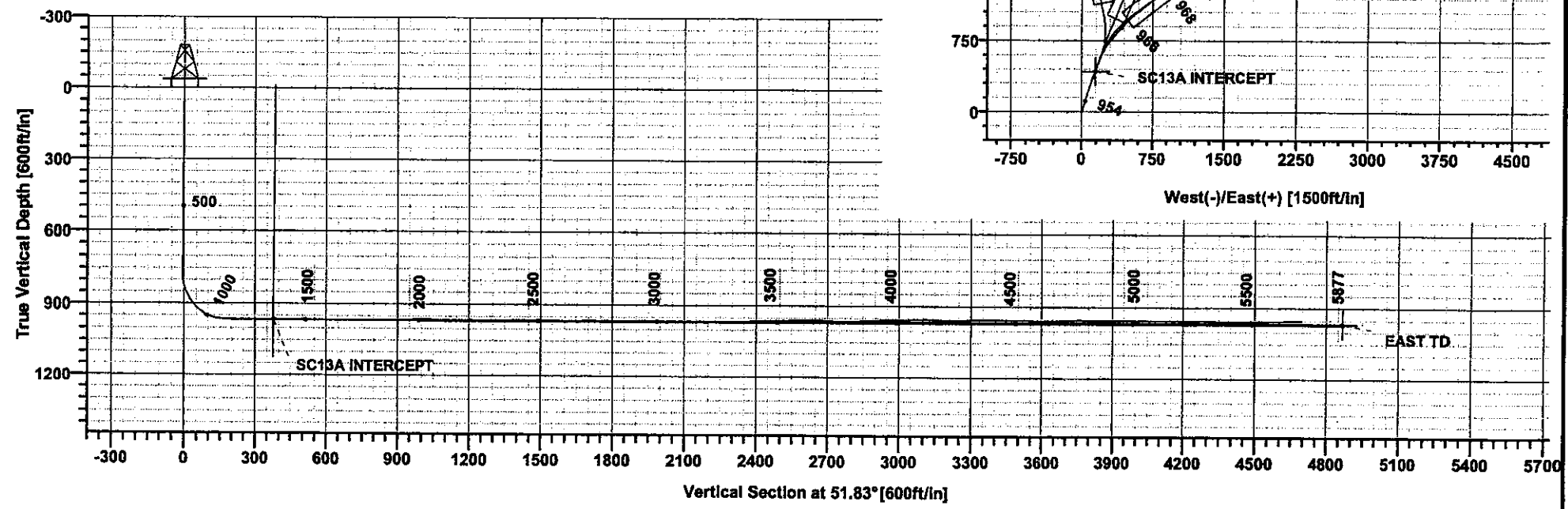
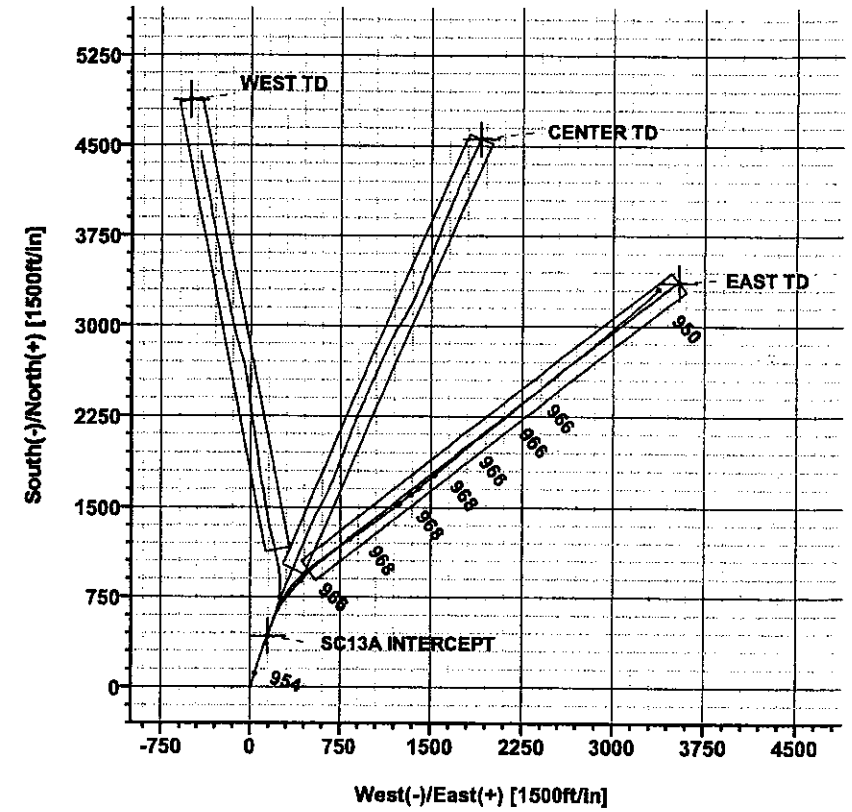
Field: MONONGALIA COUNTY, WV
 Site: SC-13A WELL LOCATION
 Well: ACCESS SC-13A
 Wellpath: SC13 EAST



TARGET DETAILS						
Name	TVD	N-S	E-W	Northing	Easting	Shape
WEST TD	966.00	4880.60	-505.69	440440.68	1754162.34	Rectangle (3800x200)
CENTER TD	966.00	4564.57	1909.66	440101.22	1756574.50	Rectangle (3900x200)
SC13A INTERCEPT	966.00	428.52	145.19	435982.49	1754769.97	Circle (Radius: 1)
EAST TD	966.00	3369.88	3543.31	438890.73	1758196.48	Rectangle (3881x200)

SITE DETAILS
 SC-13A WELL LOCATION
 Monongalia County, WV
 Site Centre Northing: 435,555.40
 Easting: 1,754,620.63
 Ground Level: 1203.65
 GL + 8 RKB: 1211.65
 Convergence: -0.56

Plot Date: 4/23/2007
 By: Carl Bakay
 Scientific Drilling, Inc.
 800-676-7302
 carl.bakay@scientificdrilling.com



AUG 10 2007

MONONGALIA 1537M



Scientific Drilling Survey Report



Company: CNX Gas Company, LLC	Date: 5/16/2007	Time: 13:16:59	Page: 1
Field: MONONGALIA COUNTY, WV	Co-ordinate(N/E) Reference: Well: ACCESS SC-13A, True North		
Site: SC-13A WELL LOCATION	Vertical (TVD) Reference: GL 1203.65 + 8 1211.7		
Well: ACCESS SC-13A	Section (VS) Reference: Well (0.00N,0.00E,51.83Azi)		
Wellpath: SC13 EAST	Survey Calculation Method: Minimum Curvature		Db: Sybase

Field: MONONGALIA COUNTY, WV Northern West Virginia and Pennsylvania Operations USA	Map System: US State Plane Coordinate System 1927	Map Zone: West Virginia, Northern Zone
Geo Datum: NAD27 (Clarke 1866)	Sys Datum: Mean Sea Level	Coordinate System: Well Centre
		Geomagnetic Model: igrf2005

Site: SC-13A WELL LOCATION	Monongalia County, WV		
Site Position:	Northing: 435555.40 ft	Latitude: 39 41 33.287 N	
From: Map	Easting: 1754620.63 ft	Longitude: 80 22 19.162 W	
Position Uncertainty: 0.00 ft		North Reference: True	
Ground Level: 1203.65 ft		Grid Convergence: -0.56 deg	

Well: ACCESS SC-13A	Slot Name:		
Well Position: +N-S 0.00 ft	Northing: 435555.40 ft	Latitude: 39 41 33.287 N	
+E-W 0.00 ft	Easting: 1754620.63 ft	Longitude: 80 22 19.162 W	
Position Uncertainty: 0.00 ft			

Wellpath: SC13 EAST	Drilled From: SC13 WEST	
Current Datum: GL 1203.65 + 8	Tie-on Depth: 1450.00 ft	
Magnetic Data: 4/23/2007	Above System Datum: Mean Sea Level	
Field Strength: 53317 nT	Declination: -8.56 deg	
Vertical Section: Depth From (IVD)	Mag Dip Angle: 67.76 deg	
ft	+N-S ft	+E-W ft
0.00	0.00	0.00
		Direction deg
		51.83

Survey: Survey #1	Start Date: 5/11/2007
Company: SDI	Engineer: Carl Bakay
Tool: MWD-SDI-SYS, Scientific MWD Systematic	Tied-to: User Defined

Survey: Survey #1

MD ft	Incl deg	Azim deg	TVD ft	+N-S ft	+E-W ft	VS ft	DLS deg/100ft	Build deg/100ft	Turn deg/100ft	Tool/Comment
1450.00	89.83	18.92	965.01	552.47	192.34	492.64	0.00	0.00	0.00	MWD-SDI-SYS
1482.00	88.42	23.03	965.50	582.34	203.79	520.10	13.58	-4.41	12.84	MWD-SDI-SYS
1514.00	88.96	26.29	966.23	611.41	217.14	548.56	10.32	1.69	10.19	MWD-SDI-SYS
1546.00	89.70	29.74	966.61	639.65	232.17	577.83	11.03	2.31	10.78	MWD-SDI-SYS
1577.00	90.57	31.11	966.53	666.38	247.86	606.69	5.24	2.81	4.42	MWD-SDI-SYS
1609.00	89.63	32.55	966.48	693.57	264.74	636.76	5.37	-2.94	4.50	MWD-SDI-SYS
1640.00	89.06	34.37	966.83	719.43	281.83	666.17	6.15	-1.84	5.87	MWD-SDI-SYS
1672.00	89.80	37.50	967.15	745.33	300.61	696.95	10.05	2.31	9.78	MWD-SDI-SYS
1703.00	89.83	40.40	967.25	769.44	320.09	727.16	9.36	0.10	9.35	MWD-SDI-SYS
1735.00	89.90	42.27	967.33	793.47	341.23	758.63	5.85	0.22	5.84	MWD-SDI-SYS
1767.00	90.47	41.50	967.22	817.29	362.59	790.14	2.99	1.78	-2.41	MWD-SDI-SYS
1798.00	91.17	40.90	966.78	840.61	383.01	820.61	2.97	2.26	-1.94	MWD-SDI-SYS
1830.00	89.97	43.01	966.46	864.41	404.40	852.13	7.59	-3.75	6.59	MWD-SDI-SYS
1861.00	90.50	41.80	966.33	887.30	425.30	882.71	4.26	1.71	-3.90	MWD-SDI-SYS
1893.00	91.14	41.74	965.88	911.16	446.62	914.22	2.01	2.00	-0.19	MWD-SDI-SYS
1925.00	92.32	43.65	964.91	934.67	468.30	945.79	7.01	3.69	5.97	MWD-SDI-SYS
1956.00	92.55	45.90	963.59	956.65	490.12	976.53	7.29	0.74	7.26	MWD-SDI-SYS
1988.00	88.56	47.16	963.28	978.66	513.33	1008.38	13.08	-12.47	3.94	MWD-SDI-SYS
2019.00	88.79	46.01	964.00	999.96	535.85	1039.24	3.78	0.74	-3.71	MWD-SDI-SYS
2082.00	88.47	47.83	965.51	1042.98	581.85	1101.99	2.93	-0.51	2.89	MWD-SDI-SYS
2114.00	90.10	51.82	965.91	1063.61	606.29	1133.96	13.47	5.09	12.47	MWD-SDI-SYS
2146.00	90.84	51.71	965.64	1083.42	631.42	1165.96	2.34	2.31	-0.34	MWD-SDI-SYS
2177.00	90.94	51.48	965.16	1102.67	655.71	1196.96	0.81	0.32	-0.74	MWD-SDI-SYS
2209.00	90.77	52.07	964.68	1122.47	680.85	1228.95	1.92	-0.53	1.84	MWD-SDI-SYS



Scientific Drilling Survey Report



Company: CNX Gas Company, LLC Field: MONONGALIA COUNTY, WV Site: SC-13A WELL LOCATION Well: ACCESS SC-13A Wellpath: SC13 EAST	Date: 5/16/2007 Time: 13:16:59 Page: 2 Co-ordinate(N/E) Reference: Well: ACCESS SC-13A, True North Vertical (TVD) Reference: GL 1203.65 + 8 1211.7 Section (VS) Reference: Well (0.00N,0.00E,51.83Azi) Survey Calculation Method: Minimum Curvature Db: Sybase
--	--

Survey: Survey #1

MD ft	Incl deg	Azim deg	TVD ft	+N/-S ft	+E/-W ft	VS ft	DLS deg/100ft	Build deg/100ft	Turn deg/100ft	Tool/Comment
2241.00	87.79	49.51	965.09	1142.69	705.64	1260.94	12.28	-9.31	-8.00	MWD-SDI-SYS
2273.00	87.38	51.38	966.43	1163.05	730.29	1292.90	5.98	-1.28	5.84	MWD-SDI-SYS
2305.00	88.76	53.33	967.51	1182.59	755.61	1324.88	7.46	4.31	6.09	MWD-SDI-SYS
2337.00	87.65	55.08	968.52	1201.29	781.55	1356.83	6.47	-3.47	5.47	MWD-SDI-SYS
2368.00	90.94	55.05	968.90	1219.04	806.96	1387.78	10.61	10.61	-0.10	MWD-SDI-SYS
2400.00	90.84	55.45	968.40	1237.28	833.25	1419.72	1.29	-0.31	1.25	MWD-SDI-SYS
2431.00	90.67	55.88	967.99	1254.76	858.84	1450.65	1.49	-0.55	1.39	MWD-SDI-SYS
2463.00	90.81	56.64	967.58	1272.53	885.45	1482.55	2.41	0.44	2.37	MWD-SDI-SYS
2494.00	89.93	57.12	967.38	1289.47	911.41	1513.43	3.23	-2.84	1.55	MWD-SDI-SYS
2526.00	89.26	57.00	967.60	1306.87	938.27	1545.29	2.13	-2.09	-0.37	MWD-SDI-SYS
2557.00	89.93	54.96	967.82	1324.21	963.96	1576.21	6.93	2.16	-6.58	MWD-SDI-SYS
2589.00	90.60	55.84	967.67	1342.38	990.30	1608.14	3.46	2.09	2.75	MWD-SDI-SYS
2621.00	93.56	53.96	966.51	1360.77	1016.46	1640.07	10.96	9.25	-5.87	MWD-SDI-SYS
2652.00	94.27	54.26	964.40	1378.90	1041.52	1670.98	2.49	2.29	0.97	MWD-SDI-SYS
2684.00	90.03	50.86	963.20	1398.33	1066.90	1702.94	16.98	-13.25	-10.62	MWD-SDI-SYS
2716.00	86.48	52.19	964.17	1418.23	1091.93	1734.92	11.85	-11.09	4.16	MWD-SDI-SYS
2747.00	87.24	52.78	965.87	1437.08	1116.48	1765.87	3.10	2.45	1.90	MWD-SDI-SYS
2779.00	89.50	53.16	966.78	1456.34	1142.02	1797.85	7.16	7.06	1.19	MWD-SDI-SYS
2810.00	90.87	53.13	966.68	1474.93	1166.82	1828.84	4.42	4.42	-0.10	MWD-SDI-SYS
2842.00	89.06	51.43	966.70	1494.51	1192.13	1860.83	7.76	-5.66	-5.31	MWD-SDI-SYS
2873.00	87.59	51.02	967.60	1513.92	1216.29	1891.82	4.92	-4.74	-1.32	MWD-SDI-SYS
2905.00	90.64	52.28	968.10	1533.77	1241.38	1923.81	10.31	9.53	3.94	MWD-SDI-SYS
2936.00	90.40	53.42	967.82	1552.49	1266.09	1954.80	3.76	-0.77	3.68	MWD-SDI-SYS
2968.00	89.97	53.76	967.71	1571.48	1291.84	1986.79	1.71	-1.34	1.06	MWD-SDI-SYS
3000.00	91.34	53.03	967.35	1590.56	1317.52	2018.77	4.85	4.28	-2.28	MWD-SDI-SYS
3031.00	91.81	51.62	966.50	1609.50	1342.05	2049.76	4.79	1.52	-4.55	MWD-SDI-SYS
3063.00	91.04	50.95	965.70	1629.51	1367.01	2081.75	3.19	-2.41	-2.09	MWD-SDI-SYS
3094.00	89.13	50.45	965.65	1649.14	1391.00	2112.74	6.37	-6.16	-1.61	MWD-SDI-SYS
3126.00	87.81	49.70	966.51	1669.67	1415.53	2144.71	4.74	-4.12	-2.34	MWD-SDI-SYS
3158.00	88.76	48.50	967.47	1690.61	1439.71	2176.66	4.78	2.97	-3.75	MWD-SDI-SYS
3189.00	90.64	48.38	967.63	1711.17	1462.90	2207.60	6.08	6.06	-0.39	MWD-SDI-SYS
3221.00	91.07	48.87	967.15	1732.32	1486.91	2239.55	2.04	1.34	1.53	MWD-SDI-SYS
3252.00	90.94	48.78	966.61	1752.73	1510.24	2270.50	0.51	-0.42	-0.29	MWD-SDI-SYS
3284.00	90.60	49.33	966.18	1773.70	1534.41	2302.46	2.02	-1.06	1.72	MWD-SDI-SYS
3316.00	92.02	50.95	965.45	1794.20	1558.97	2334.44	6.73	4.44	5.06	MWD-SDI-SYS
3347.00	92.75	51.38	964.16	1813.62	1583.09	2365.41	2.73	2.35	1.39	MWD-SDI-SYS
3379.00	91.38	50.53	963.00	1833.77	1607.93	2397.38	5.04	-4.28	-2.66	MWD-SDI-SYS
3410.00	92.35	50.63	961.99	1853.44	1631.86	2428.36	3.15	3.13	0.32	MWD-SDI-SYS
3443.00	90.94	51.11	961.05	1874.26	1657.45	2461.34	4.51	-4.27	1.45	MWD-SDI-SYS
3475.00	90.84	51.21	960.55	1894.32	1682.37	2493.33	0.44	-0.31	0.31	MWD-SDI-SYS
3506.00	90.40	50.57	960.21	1913.88	1706.42	2524.33	2.51	-1.42	-2.06	MWD-SDI-SYS
3538.00	91.01	50.60	959.82	1934.19	1731.14	2556.32	1.91	1.91	0.09	MWD-SDI-SYS
3569.00	90.44	49.73	959.43	1954.05	1754.95	2587.30	3.35	-1.84	-2.81	MWD-SDI-SYS
3601.00	90.50	48.55	959.17	1974.98	1779.15	2619.27	3.69	0.19	-3.69	MWD-SDI-SYS
3633.00	89.02	49.14	959.30	1996.04	1803.24	2651.22	4.98	-4.62	1.84	MWD-SDI-SYS
3664.00	88.42	49.01	959.99	2016.34	1826.66	2682.18	1.98	-1.94	-0.42	MWD-SDI-SYS
3696.00	87.42	50.07	961.15	2037.10	1850.99	2714.13	4.55	-3.12	3.31	MWD-SDI-SYS
3727.00	87.31	51.51	962.58	2056.67	1874.98	2745.09	4.65	-0.35	4.65	MWD-SDI-SYS
3759.00	90.57	52.97	963.17	2076.26	1900.27	2777.08	11.16	10.19	4.56	MWD-SDI-SYS
3790.00	92.75	53.08	962.27	2094.90	1925.03	2808.06	7.04	7.03	0.35	MWD-SDI-SYS
3822.00	92.79	52.26	960.73	2114.28	1950.44	2840.02	2.56	0.12	-2.56	MWD-SDI-SYS
3852.00	91.48	51.81	959.61	2132.72	1974.08	2869.99	4.62	-4.37	-1.50	MWD-SDI-SYS
3884.00	91.74	52.17	958.71	2152.42	1999.28	2901.98	1.39	0.81	1.12	MWD-SDI-SYS

MONONGALIA 1537M



Scientific Drilling Survey Report



Company: CNX Gas Company, LLC	Date: 5/16/2007	Time: 13:16:59	Page: 3
Field: MONONGALIA COUNTY, WV	Co-ordinate(N/E) Reference: Well: ACCESS SC-13A, True North		
Site: SC-13A WELL LOCATION	Vertical (TVD) Reference: GL 1203.65 + 8 1211.7		
Well: ACCESS SC-13A	Section (VS) Reference: Well (0.00N,0.00E,51.83Azi)		
Wellpath: SC13 EAST	Survey Calculation Method: Minimum Curvature		Db: Sybase

Survey: Survey #1

MD ft	Incl deg	Azim deg	TVD ft	+N-S ft	+E-W ft	VS ft	DLS deg/100ft	Build deg/100ft	Turn deg/100ft	Tool/Comment
3916.00	91.11	51.85	957.91	2172.11	2024.49	2933.97	2.21	-1.97	-1.00	MWD-SDI-SYS
3947.00	89.80	52.31	957.67	2191.16	2048.94	2964.97	4.48	-4.23	1.48	MWD-SDI-SYS
3979.00	90.77	52.49	957.51	2210.68	2074.30	2996.97	3.08	3.03	0.56	MWD-SDI-SYS
4010.00	91.68	52.28	956.85	2229.60	2098.85	3027.96	3.01	2.94	-0.68	MWD-SDI-SYS
4042.00	92.72	51.20	955.62	2249.40	2123.95	3059.93	4.68	3.25	-3.37	MWD-SDI-SYS
4074.00	91.95	50.28	954.31	2269.63	2148.71	3091.90	3.75	-2.41	-2.87	MWD-SDI-SYS
4105.00	88.86	50.17	954.09	2289.46	2172.53	3122.88	9.97	-9.97	-0.35	MWD-SDI-SYS
4137.00	87.15	49.55	955.21	2310.08	2196.98	3154.84	5.68	-5.34	-1.94	MWD-SDI-SYS
4168.00	88.09	50.14	956.50	2330.05	2220.65	3185.80	3.58	3.03	1.90	MWD-SDI-SYS
4200.00	90.03	51.09	957.02	2350.35	2245.38	3217.79	6.75	6.06	2.97	MWD-SDI-SYS
4231.00	91.04	50.98	956.73	2369.85	2269.48	3248.78	3.28	3.26	-0.35	MWD-SDI-SYS
4263.00	91.31	50.46	956.08	2390.10	2294.25	3280.77	1.83	0.84	-1.62	MWD-SDI-SYS
4295.00	92.35	49.69	955.05	2410.63	2318.77	3312.74	4.04	3.25	-2.41	MWD-SDI-SYS
4326.00	90.34	49.13	954.33	2430.79	2342.31	3343.70	6.73	-6.48	-1.81	MWD-SDI-SYS
4358.00	89.46	49.47	954.38	2451.66	2366.57	3375.67	2.95	-2.75	1.06	MWD-SDI-SYS
4389.00	90.67	49.76	954.35	2471.74	2390.18	3406.64	4.01	3.90	0.94	MWD-SDI-SYS
4421.00	89.53	49.56	954.29	2492.46	2414.57	3438.62	3.62	-3.56	-0.62	MWD-SDI-SYS
4453.00	89.36	49.38	954.60	2513.25	2438.89	3470.59	0.77	-0.53	-0.56	MWD-SDI-SYS
4484.00	88.99	49.72	955.05	2533.36	2462.48	3501.56	1.62	-1.19	1.10	MWD-SDI-SYS
4516.00	88.82	50.19	955.66	2553.95	2486.97	3533.54	1.56	-0.53	1.47	MWD-SDI-SYS
4547.00	89.23	50.76	956.19	2573.67	2510.88	3564.53	2.26	1.32	1.84	MWD-SDI-SYS
4579.00	89.70	51.88	956.48	2593.67	2535.86	3596.52	3.80	1.47	3.50	MWD-SDI-SYS
4611.00	90.30	52.97	956.48	2613.18	2561.22	3628.52	3.89	1.87	3.41	MWD-SDI-SYS
4642.00	90.87	53.19	956.17	2631.80	2586.00	3659.51	1.97	1.84	0.71	MWD-SDI-SYS
4675.00	91.58	53.53	955.46	2651.49	2612.47	3692.49	2.39	2.15	1.03	MWD-SDI-SYS
4706.00	91.95	53.15	954.51	2669.99	2637.33	3723.47	1.71	1.19	-1.23	MWD-SDI-SYS
4738.00	90.27	52.64	953.89	2689.29	2662.85	3755.45	5.49	-5.25	-1.59	MWD-SDI-SYS
4770.00	88.25	52.23	954.30	2708.80	2688.21	3787.45	6.44	-6.31	-1.28	MWD-SDI-SYS
4801.00	89.33	52.29	954.96	2727.77	2712.72	3818.44	3.49	3.48	0.19	MWD-SDI-SYS
4833.00	90.07	52.79	955.12	2747.23	2738.12	3850.44	2.79	2.31	1.56	MWD-SDI-SYS
4864.00	89.90	51.00	955.13	2766.36	2762.51	3881.43	5.80	-0.55	-5.77	MWD-SDI-SYS
4896.00	89.90	50.21	955.19	2786.67	2787.24	3913.43	2.47	0.00	-2.47	MWD-SDI-SYS
4928.00	90.81	48.42	954.99	2807.53	2811.50	3945.39	6.27	2.84	-5.59	MWD-SDI-SYS
4959.00	89.70	48.74	954.85	2828.04	2834.75	3976.34	3.73	-3.58	1.03	MWD-SDI-SYS
4991.00	89.63	48.95	955.04	2849.10	2858.84	4008.30	0.69	-0.22	0.66	MWD-SDI-SYS
5023.00	89.40	48.98	955.31	2870.11	2882.98	4040.26	0.72	-0.72	0.09	MWD-SDI-SYS
5054.00	89.50	49.59	955.61	2890.33	2906.47	4071.23	1.99	0.32	1.97	MWD-SDI-SYS
5086.00	89.80	49.72	955.80	2911.04	2930.86	4103.20	1.02	0.94	0.41	MWD-SDI-SYS
5117.00	89.87	49.20	955.89	2931.19	2954.42	4134.18	1.69	0.23	-1.68	MWD-SDI-SYS
5149.00	90.74	48.53	955.72	2952.24	2978.52	4166.13	3.43	2.72	-2.09	MWD-SDI-SYS
5181.00	91.11	48.60	955.20	2973.41	3002.51	4198.08	1.18	1.16	0.22	MWD-SDI-SYS
5212.00	89.87	48.05	954.94	2994.03	3025.66	4229.02	4.38	-4.00	-1.77	MWD-SDI-SYS
5244.00	89.70	48.06	955.06	3015.41	3049.46	4260.95	0.53	-0.53	0.03	MWD-SDI-SYS
5275.00	90.37	46.83	955.04	3036.38	3072.30	4291.85	4.52	2.16	-3.97	MWD-SDI-SYS
5307.00	88.49	47.97	955.36	3058.04	3095.85	4323.75	6.87	-5.87	3.56	MWD-SDI-SYS
5338.00	87.92	48.81	956.33	3078.61	3119.02	4354.68	3.27	-1.84	2.71	MWD-SDI-SYS
5370.00	88.56	48.99	957.31	3099.64	3143.12	4386.63	2.08	2.00	0.56	MWD-SDI-SYS
5402.00	89.36	49.16	957.89	3120.60	3167.29	4418.58	2.56	2.50	0.53	MWD-SDI-SYS
5433.00	90.64	49.18	957.89	3140.86	3190.75	4449.55	4.13	4.13	0.06	MWD-SDI-SYS
5465.00	90.97	48.63	957.44	3161.90	3214.86	4481.50	2.00	1.03	-1.72	MWD-SDI-SYS
5496.00	91.48	48.36	956.78	3182.44	3238.07	4512.45	1.86	1.65	-0.87	MWD-SDI-SYS
5528.00	91.04	47.65	956.08	3203.84	3261.85	4544.37	2.61	-1.37	-2.22	MWD-SDI-SYS
5559.00	91.61	47.52	955.36	3224.74	3284.73	4575.27	1.89	1.84	-0.42	MWD-SDI-SYS



Scientific Drilling Survey Report



Company: CNX Gas Company, LLC Field: MONONGALIA COUNTY, WV Site: SC-13A WELL LOCATION Well: ACCESS SC-13A Wellpath: SC13 EAST	Date: 5/16/2007 Time: 13:16:59 Page: 4 Co-ordinate(NE) Reference: Well: ACCESS SC-13A, True North Vertical (TVD) Reference: GL 1203.65 + 8 1211.7 Section (VS) Reference: Well (0.00N,0.00E,51.83Azi) Survey Calculation Method: Minimum Curvature Db: Sybase
--	---

Survey: Survey #1

MD ft	Incl deg	Azim deg	TVD ft	+N/-S ft	+E/-W ft	VS ft	DLS deg/100ft	Build deg/100ft	Turn deg/100ft	Tool/Comment
5590.00	92.25	47.52	954.32	3245.67	3307.58	4606.17	2.06	2.06	0.00	MWD-SDI-SYS
5620.00	92.65	47.04	953.03	3266.00	3329.60	4636.05	2.08	1.33	-1.60	MWD-SDI-SYS
5650.00	92.82	46.42	951.60	3286.54	3351.42	4665.89	2.14	0.57	-2.07	MWD-SDI-SYS
5681.00	92.28	45.19	950.22	3308.13	3373.62	4696.69	4.33	-1.74	-3.97	MWD-SDI-SYS

MONONGALIA 1537 N



Scientific Drilling Survey Report - Geographic



Company: CNX Gas Company, LLC Field: MONONGALIA COUNTY, WV Site: SC-13A WELL LOCATION Well: ACCESS SC-13A Wellpath: SC13 EAST		Date: 5/16/2007 Time: 13:18:02 Page: 1 Co-ordinate(NE) Reference: Well: ACCESS SC-13A, True North Vertical (TVD) Reference: GL 1203.65 + 8 1211.7 Section (VS) Reference: Well (0.00N,0.00E,51.83Azi) Survey Calculation Method: Minimum Curvature Db: Sybase							
Field: MONONGALIA COUNTY, WV Northern West Virginia and Pennsylvania Operations USA Map System: S State Plane Coordinate System 1927 Geo Datum: NAD27 (Clarke 1866) Sys Datum: Mean Sea Level		Map Zone: West Virginia, Northern Zone Coordinate System: Well Centre Geomagnetic Model: igrf2005							
Site: SC-13A WELL LOCATION Monongalia County, WV									
Site Position: From: Map Position Uncertainty: 0.00 ft Ground Level: 1203.65 ft		Northing: 435555.40 ft Easting: 1754620.63 ft Latitude: 39 41 33.287 N Longitude: 80 22 19.162 W North Reference: True Grid Convergence: -0.56 deg							
Well: ACCESS SC-13A Well Position: +N-S 0.00 ft +E-W 0.00 ft Position Uncertainty: 0.00 ft		Slot Name: Latitude: 39 41 33.287 N Longitude: 80 22 19.162 W							
Wellpath: SC13 EAST Current Datum: GL 1203.65 + 8 Magnetic Data: 4/23/2007 Field Strength: 53317 nT Vertical Section: Depth From (TVD)		Drilled From: SC13 WEST Tie-on Depth: 1450.00 ft Above System Datum: Mean Sea Level Declination: -8.56 deg Mag Dip Angle: 67.76 deg +N-S +E-W Direction ft ft deg							
0.00 0.00		0.00 51.83							
Survey: Survey #1 Company: SDI Tool: MWD-SDI-SYS, Scientific MWD Systematic		Start Date: 5/11/2007 Engineer: Carl Bakay Tied-to: User Defined							
Survey: Survey #1									
MD ft	Incl deg	Azlm deg	TVD ft	+N-S ft	+E-W ft	Map Northing ft	Map Easting ft	Latitude Deg Min Sec	Longitude Deg Min Sec
1450.00	89.83	18.92	965.01	552.47	192.34	436105.98	1754818.33	39 41 38.747 N	80 22 16.701 W
1482.00	88.42	23.03	965.50	582.34	203.79	436135.73	1754830.07	39 41 39.043 N	80 22 16.555 W
1514.00	88.96	26.29	966.23	611.41	217.14	436164.67	1754843.69	39 41 39.330 N	80 22 16.384 W
1546.00	89.70	29.74	966.61	639.65	232.17	436192.77	1754858.99	39 41 39.609 N	80 22 16.192 W
1577.00	90.57	31.11	966.53	666.38	247.86	436219.35	1754874.95	39 41 39.873 N	80 22 15.991 W
1609.00	89.63	32.55	966.48	693.57	264.74	436246.37	1754892.09	39 41 40.142 N	80 22 15.775 W
1640.00	89.06	34.37	966.83	719.43	281.83	436272.06	1754909.43	39 41 40.397 N	80 22 15.556 W
1672.00	89.80	37.50	967.15	745.33	300.61	436297.78	1754928.46	39 41 40.654 N	80 22 15.316 W
1703.00	89.83	40.40	967.25	769.44	320.09	436321.70	1754948.18	39 41 40.892 N	80 22 15.067 W
1735.00	89.90	42.27	967.33	793.47	341.23	436345.52	1754969.54	39 41 41.129 N	80 22 14.797 W
1767.00	90.47	41.50	967.22	817.29	362.59	436369.13	1754991.14	39 41 41.365 N	80 22 14.523 W
1798.00	91.17	40.90	966.78	840.61	383.01	436392.25	1755011.78	39 41 41.595 N	80 22 14.262 W
1830.00	89.97	43.01	966.46	864.41	404.40	436415.84	1755033.40	39 41 41.830 N	80 22 13.988 W
1861.00	90.50	41.80	966.33	887.30	425.30	436438.53	1755054.53	39 41 42.057 N	80 22 13.721 W
1893.00	91.14	41.74	965.88	911.16	446.62	436462.18	1755076.07	39 41 42.292 N	80 22 13.448 W
1925.00	92.32	43.65	964.91	934.67	468.30	436485.48	1755097.98	39 41 42.525 N	80 22 13.171 W
1956.00	92.55	45.90	963.59	956.65	490.12	436507.25	1755120.01	39 41 42.742 N	80 22 12.892 W
1988.00	88.56	47.16	963.28	978.66	513.33	436529.03	1755143.44	39 41 42.960 N	80 22 12.595 W
2019.00	88.79	46.01	964.00	999.96	535.85	436550.11	1755166.16	39 41 43.170 N	80 22 12.307 W
2082.00	88.47	47.83	965.51	1042.98	581.85	436592.68	1755212.57	39 41 43.595 N	80 22 11.718 W
2114.00	90.10	51.82	965.91	1063.61	606.29	436613.08	1755237.21	39 41 43.799 N	80 22 11.405 W
2146.00	90.84	51.71	965.64	1083.42	631.42	436632.64	1755262.54	39 41 43.995 N	80 22 11.084 W
2177.00	90.94	51.48	965.16	1102.67	655.71	436651.66	1755287.02	39 41 44.185 N	80 22 10.773 W



Scientific Drilling Survey Report - Geographic



MD ft	Incl deg	Azim deg	TVD ft	+N/-S ft	+E/-W ft	Map Northing ft	Map Easting ft	Latitude Deg Min Sec	Longitude Deg Min Sec
3852.00	91.48	51.81	959.61	2132.72	1974.08	437668.86	1756615.31	39 41 54.365 N	80 21 53.906 W
3884.00	91.74	52.17	958.71	2152.42	1999.28	437688.31	1756640.71	39 41 54.560 N	80 21 53.583 W
3916.00	91.11	51.85	957.91	2172.11	2024.49	437707.76	1756666.11	39 41 54.754 N	80 21 53.261 W
3947.00	89.80	52.31	957.67	2191.16	2048.94	437726.57	1756690.74	39 41 54.943 N	80 21 52.948 W
3979.00	90.77	52.49	957.51	2210.68	2074.30	437745.85	1756716.29	39 41 55.136 N	80 21 52.623 W
4010.00	91.68	52.28	956.85	2229.60	2098.85	437764.52	1756741.02	39 41 55.323 N	80 21 52.309 W
4042.00	92.72	51.20	955.62	2249.40	2123.95	437784.08	1756766.32	39 41 55.518 N	80 21 51.988 W
4074.00	91.95	50.28	954.31	2269.63	2148.71	437804.07	1756791.27	39 41 55.718 N	80 21 51.671 W
4105.00	88.86	50.17	954.09	2289.46	2172.53	437823.67	1756815.28	39 41 55.914 N	80 21 51.367 W
4137.00	87.15	49.55	955.21	2310.08	2196.98	437844.05	1756839.93	39 41 56.118 N	80 21 51.054 W
4168.00	88.09	50.14	956.50	2330.05	2220.65	437863.79	1756863.79	39 41 56.315 N	80 21 50.751 W
4200.00	90.03	51.09	957.02	2350.35	2245.38	437883.85	1756888.72	39 41 56.516 N	80 21 50.434 W
4231.00	91.04	50.98	956.73	2369.85	2269.48	437903.11	1756913.01	39 41 56.709 N	80 21 50.126 W
4263.00	91.31	50.46	956.08	2390.10	2294.25	437923.12	1756937.97	39 41 56.909 N	80 21 49.809 W
4295.00	92.35	49.69	955.05	2410.63	2318.77	437943.41	1756962.69	39 41 57.112 N	80 21 49.495 W
4326.00	90.34	49.13	954.33	2430.79	2342.31	437963.34	1756986.42	39 41 57.311 N	80 21 49.194 W
4358.00	89.46	49.47	954.38	2451.66	2366.57	437983.97	1757010.88	39 41 57.517 N	80 21 48.884 W
4389.00	90.67	49.76	954.35	2471.74	2390.18	438003.83	1757034.69	39 41 57.716 N	80 21 48.582 W
4421.00	89.53	49.56	954.29	2492.46	2414.57	438024.30	1757059.28	39 41 57.920 N	80 21 48.270 W
4453.00	89.36	49.38	954.60	2513.25	2438.89	438044.86	1757083.80	39 41 58.126 N	80 21 47.958 W
4484.00	88.99	49.72	955.05	2533.36	2462.48	438064.74	1757107.58	39 41 58.325 N	80 21 47.657 W
4516.00	88.82	50.19	955.66	2553.95	2486.97	438085.09	1757132.27	39 41 58.528 N	80 21 47.343 W
4547.00	89.23	50.76	956.19	2573.67	2510.88	438104.58	1757156.37	39 41 58.723 N	80 21 47.037 W
4579.00	89.70	51.88	956.48	2593.67	2535.86	438124.33	1757181.54	39 41 58.921 N	80 21 46.718 W
4611.00	90.30	52.97	956.48	2613.18	2561.22	438143.60	1757207.09	39 41 59.113 N	80 21 46.393 W
4642.00	90.87	53.19	956.17	2631.80	2586.00	438161.98	1757232.05	39 41 59.297 N	80 21 46.076 W
4675.00	91.58	53.53	955.46	2651.49	2612.47	438181.41	1757258.72	39 41 59.492 N	80 21 45.737 W
4706.00	91.95	53.15	954.51	2669.99	2637.33	438199.67	1757283.75	39 41 59.675 N	80 21 45.419 W
4738.00	90.27	52.64	953.89	2689.29	2662.85	438218.72	1757309.45	39 41 59.866 N	80 21 45.093 W
4770.00	88.25	52.23	954.30	2708.80	2688.21	438237.98	1757335.00	39 42 0.058 N	80 21 44.768 W
4801.00	89.33	52.29	954.96	2727.77	2712.72	438256.71	1757359.70	39 42 0.246 N	80 21 44.455 W
4833.00	90.07	52.79	955.12	2747.23	2738.12	438275.93	1757385.28	39 42 0.438 N	80 21 44.130 W
4864.00	89.90	51.00	955.13	2766.36	2762.51	438294.82	1757409.86	39 42 0.627 N	80 21 43.818 W
4896.00	89.90	50.21	955.19	2786.67	2787.24	438314.89	1757434.78	39 42 0.828 N	80 21 43.501 W
4928.00	90.81	48.42	954.99	2807.53	2811.50	438335.51	1757459.25	39 42 1.034 N	80 21 43.191 W
4959.00	89.70	48.74	954.85	2828.04	2834.75	438355.79	1757482.69	39 42 1.237 N	80 21 42.893 W
4991.00	89.63	48.95	955.04	2849.10	2858.84	438376.61	1757506.99	39 42 1.445 N	80 21 42.585 W
5023.00	89.40	48.98	955.31	2870.11	2882.98	438397.39	1757531.33	39 42 1.652 N	80 21 42.276 W
5054.00	89.50	49.59	955.61	2890.33	2906.47	438417.38	1757555.02	39 42 1.852 N	80 21 41.976 W
5086.00	89.80	49.72	955.80	2911.04	2930.86	438437.86	1757579.61	39 42 2.057 N	80 21 41.663 W
5117.00	89.87	49.20	955.89	2931.19	2954.42	438457.78	1757603.36	39 42 2.256 N	80 21 41.362 W
5149.00	90.74	48.53	955.72	2952.24	2978.52	438478.59	1757627.67	39 42 2.464 N	80 21 41.054 W
5181.00	91.11	48.60	955.20	2973.41	3002.51	438499.53	1757651.86	39 42 2.673 N	80 21 40.747 W
5212.00	89.87	48.05	954.94	2994.03	3025.66	438519.92	1757675.21	39 42 2.877 N	80 21 40.450 W
5244.00	89.70	48.06	955.06	3015.41	3049.46	438541.07	1757699.22	39 42 3.088 N	80 21 40.146 W
5275.00	90.37	46.83	955.04	3036.38	3072.30	438561.82	1757722.26	39 42 3.296 N	80 21 39.854 W
5307.00	88.49	47.97	955.36	3058.04	3095.85	438583.24	1757746.02	39 42 3.510 N	80 21 39.552 W
5338.00	87.92	48.81	956.33	3078.61	3119.02	438603.59	1757769.38	39 42 3.713 N	80 21 39.256 W
5370.00	88.56	48.99	957.31	3099.64	3143.12	438624.38	1757793.69	39 42 3.921 N	80 21 38.947 W
5402.00	89.36	49.16	957.89	3120.60	3167.29	438645.11	1757818.06	39 42 4.128 N	80 21 38.638 W
5433.00	90.64	49.18	957.89	3140.86	3190.75	438665.15	1757841.71	39 42 4.328 N	80 21 38.338 W
5465.00	90.97	48.63	957.44	3161.90	3214.86	438685.94	1757866.03	39 42 4.536 N	80 21 38.029 W
5496.00	91.48	48.36	956.78	3182.44	3238.07	438706.26	1757889.44	39 42 4.739 N	80 21 37.732 W



Scientific Drilling Survey Report - Geographic



Company: CNX Gas Company, LLC Field: MONONGALIA COUNTY, WV Site: SC-13A WELL LOCATION Well: ACCESS SC-13A Wellpath: SC13 EAST	Date: 5/16/2007 Time: 13:18:02 Page: 4 Co-ordinate(NE) Reference: Well: ACCESS SC-13A, True North Vertical (TVD) Reference: GL 1203.65 + 8 1211.7 Section (VS) Reference: Well (0.00N,0.00E,51.83Azi) Survey Calculation Method: Minimum Curvature Db: Sybase
--	---

Survey: Survey #1

MD ft	Incl deg	Azim deg	TVD ft	+N/-S ft	+E/-W ft	Map Northing ft	Map Easting ft	Latitude		Longitude					
								Deg	Min	Sec	Deg	Min	Sec		
5528.00	91.04	47.65	956.08	3203.84	3261.85	438727.43	1757913.42	39	42	4.950	N	80	21	37.428	W
5559.00	91.61	47.52	955.36	3224.74	3284.73	438748.11	1757936.51	39	42	5.157	N	80	21	37.135	W
5590.00	92.25	47.52	954.32	3245.67	3307.58	438768.81	1757959.56	39	42	5.364	N	80	21	36.843	W
5620.00	92.65	47.04	953.03	3266.00	3329.60	438788.93	1757981.77	39	42	5.565	N	80	21	36.561	W
5650.00	92.82	46.42	951.60	3286.54	3351.42	438809.26	1758003.79	39	42	5.768	N	80	21	36.282	W
5681.00	92.28	45.19	950.22	3308.13	3373.62	438830.63	1758026.20	39	42	5.981	N	80	21	35.998	W

MONONGALIA 1537M

AUG 10 2007