

4706101553P



Battelle

19-11.5

19-11.3

19-11.4

19-11.1

19-11.2

19-11.6

19-10

061-01553

061-01552

12-28.2

RECEIVED
 Office of Oil and Gas
 DEC 04 2024
 WV Department of
 Environmental Protection

19-9

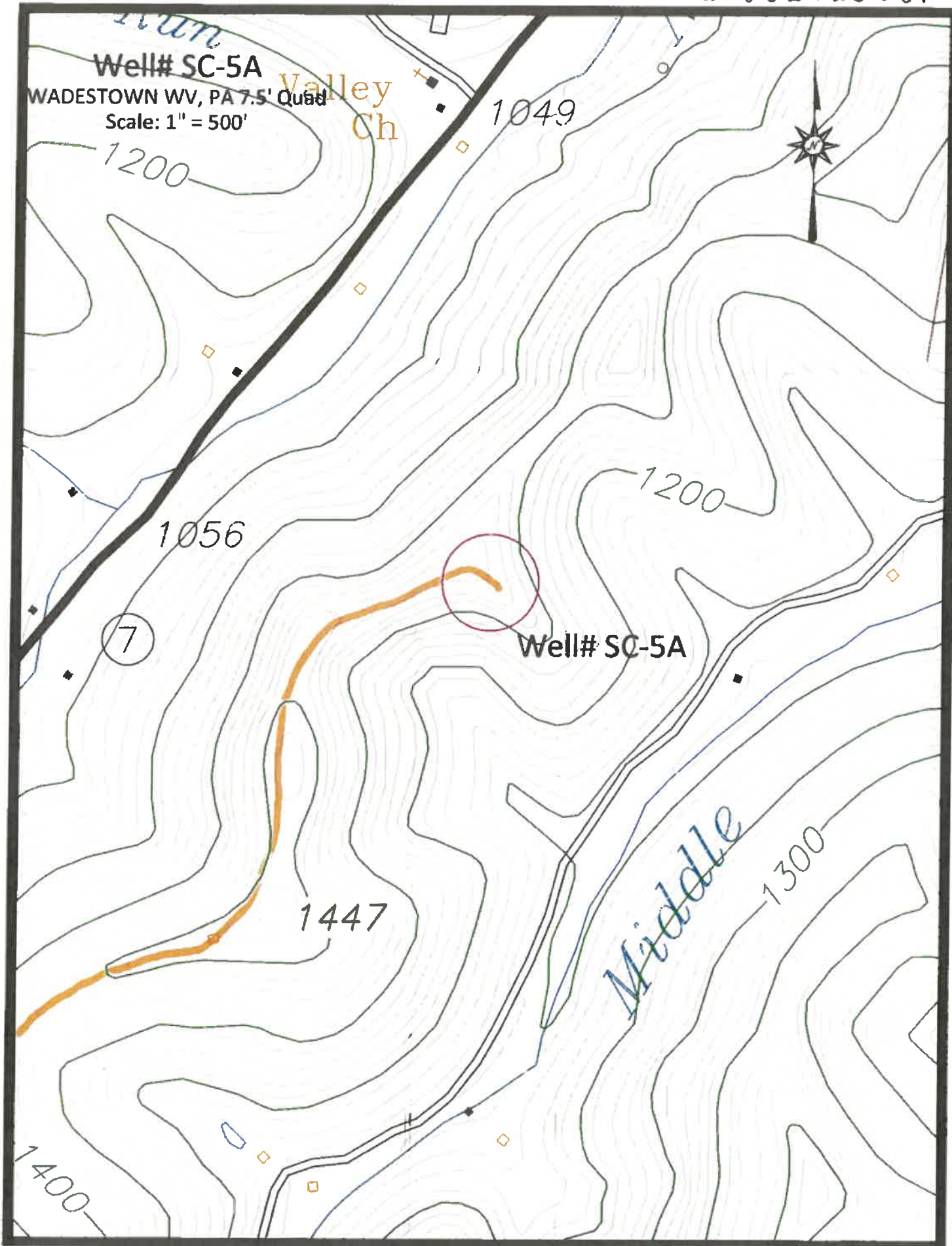
12-28.4

19-8.2

12-24

WV County Assessor, WV Property Tax Division, WVDHSEM, WVGISTC

01/17/2025



Well# SC-5A

WADESTOWN WV, PA 7.5' Quad

Scale: 1" = 500'

Valley Ch

1049

1200

1056

7

Well# SC-5A

1200

1447

Middle

1300

1400

As per (A. 1)

01/17/2025

Well# SC-5A
WADESTOWN WV, PA 7.5' Quad
Scale: 1" = 2000'

BATTLE

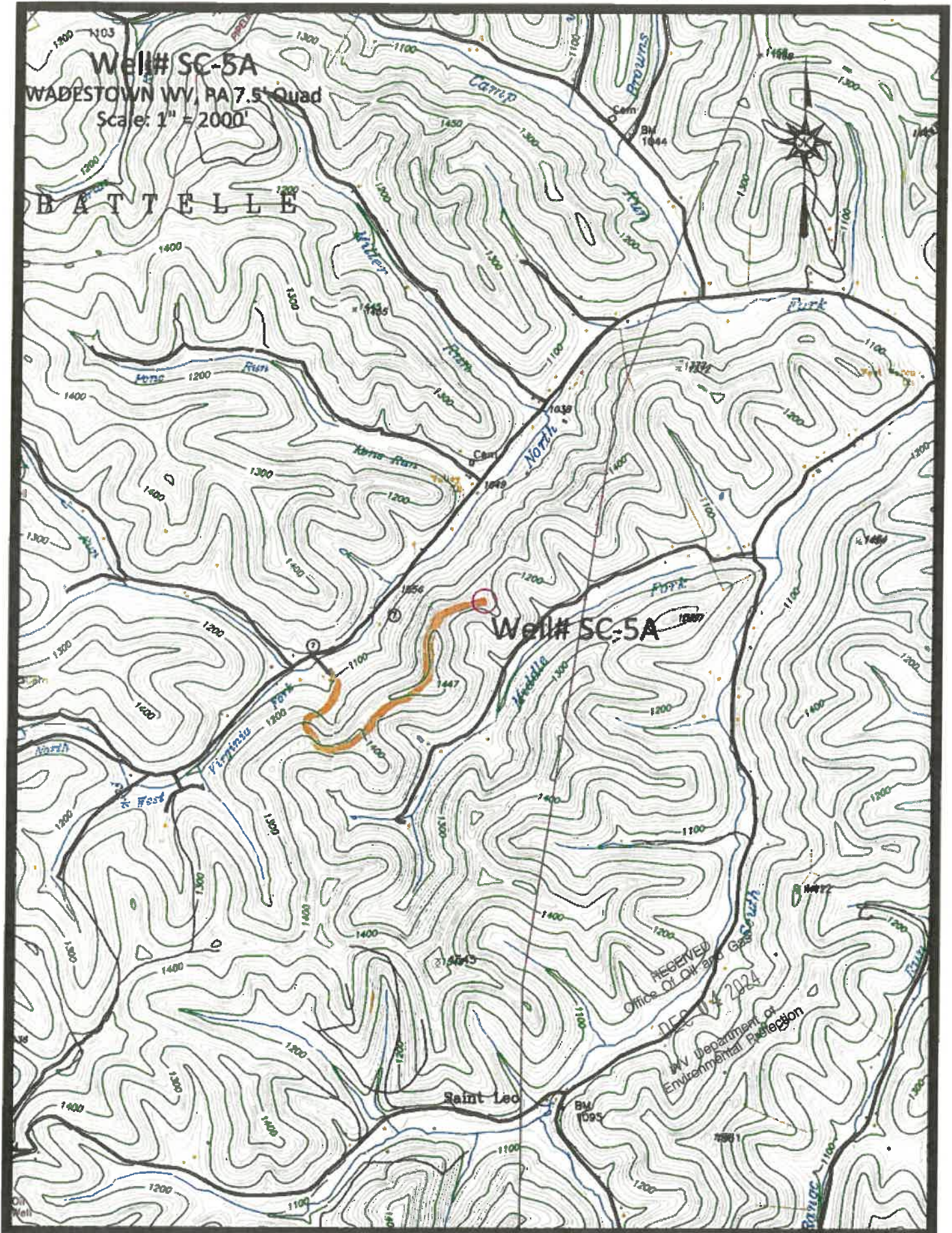
Well# SC-5A



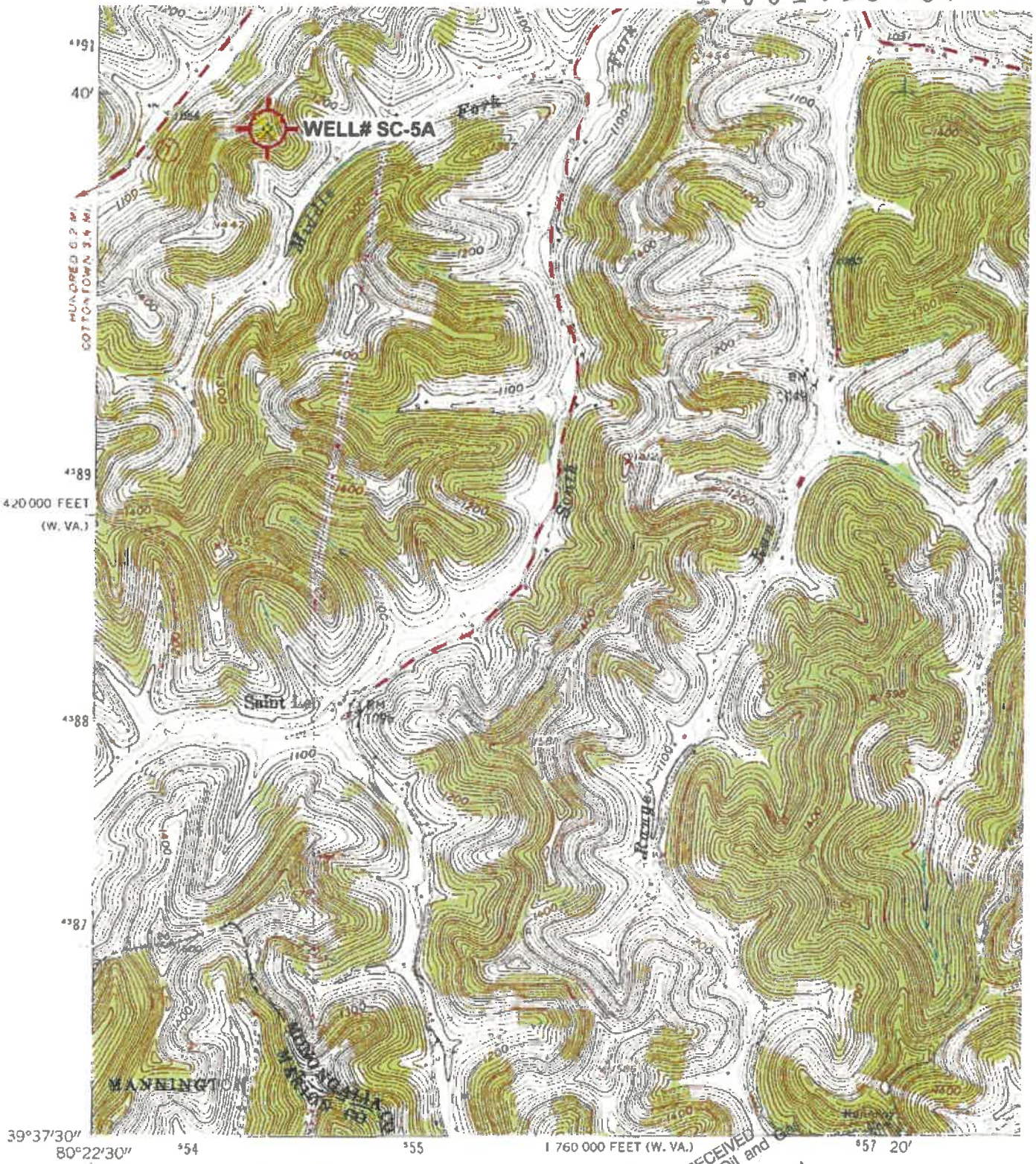
RECEIVED
Office of Oil and Gas Search
DEC 14 2024
WV Department of
Environmental Protection

 Access Road

01/17/2025



4706101553P



(GLOVER GAP)
2852 II SW

Mapped, edited, and published by the Geological Survey

Control: by USGS and USC&GS

Topography from aerial photographs by photogrammetric methods
Aerial photographs taken 1956. Field check 1958

Polyconic projection. 1927 North American datum
10,000-foot grids based on West Virginia coordinate system,
north zone, and Pennsylvania coordinate system, south zone
1000-meter Universal Transverse Mercator grid ticks,
zone 17, shown in blue

Fine red dashed lines indicate selected fence and field lines where
generally visible on aerial photographs. This information is unchecked
Revisions shown in purple compiled from aerial photographs
taken 1976. This information not field checked

RECEIVED
Office of Oil and Gas
DEC 14 2024
5 1/2
98
WV Department of
Environmental Protection
8 MILES

UTM GRID AND 1976 MAGNETIC NORTH
DECLINATION AT CENTER OF SHEET

"Wadestown: WV.PA" Scale: 1" = 0.379Mi 610M 2 000Ft 1 Mi = 2 640' 1 cm = 240M

01/17/2025

4706101553P

WW-7
8-30-06



West Virginia Department of Environmental Protection
Office of Oil and Gas

WELL LOCATION FORM: GPS

API: 47-061-01553 WELL NO.: SC-5A

FARM NAME: RALPH & BETTY JO SIX

RESPONSIBLE PARTY NAME: WEST VIRGINIA LAND RESOURCES INC.

COUNTY: MONONGALIA DISTRICT: BATTELLE

QUADRANGLE: WADESTOWN W.VA, PA

SURFACE OWNER: GEORGE D. SIX

ROYALTY OWNER: _____

UTM GPS NORTHING: 4,390,801 m 1358'

UTM GPS EASTING: 554,380 m GPS ELEVATION: 414 m

The Responsible Party named above has chosen to submit GPS coordinates in lieu of preparing a new well location plat for a plugging permit or assigned API number on the above well. The Office of Oil and Gas will not accept GPS coordinates that do not meet the following requirements:

- Datum: NAD 1983, Zone: 17 North, Coordinate Units: meters, height above mean sea level (MSL) – meters.
- Accuracy to Datum – 3.05 meters
- Data Collection Method:
Survey grade GPS ; Post Processed Differential _____
Real-Time Differential

Mapping Grade GPS _____ : Post Processed Differential _____
Real-Time Differential _____

4. Letter size copy of the topography map showing the well location.

I the undersigned, hereby certify this data is correct to the best of my knowledge and belief and shows all the information required by law and the regulations issued and prescribed by the Office of Oil and Gas.

[Signature]
Signature

PS2002
Title

MARCH 7, 2024
Date

RECEIVED
Office Of Oil and Gas
DEC 04 2024
WV Department of Environmental Protection