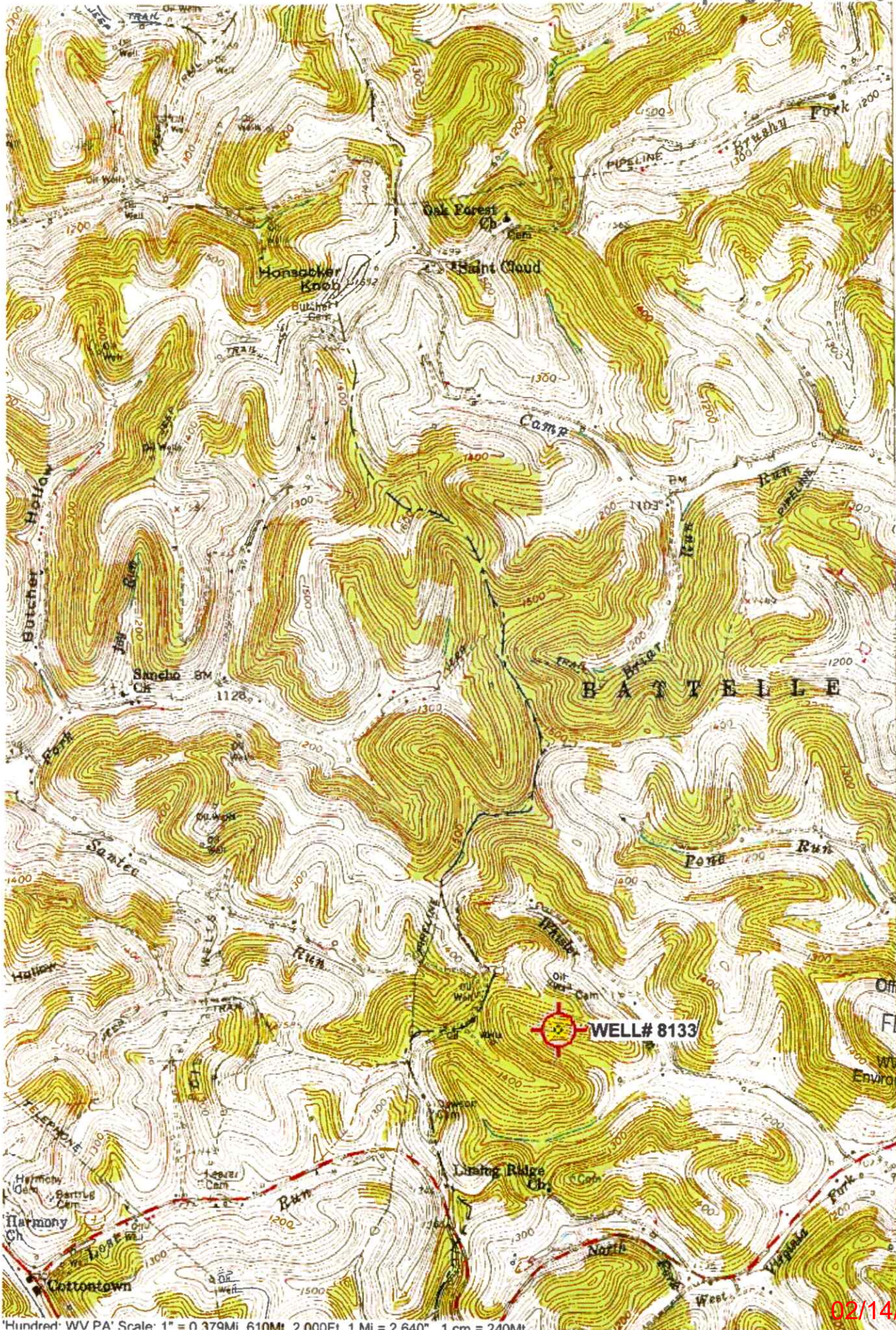


4706101977



42'30"

4394

(WADESTOWN)  
4963 III NE

4392

RECEIVED  
Office of Oil and Gas

FEB 03 2025

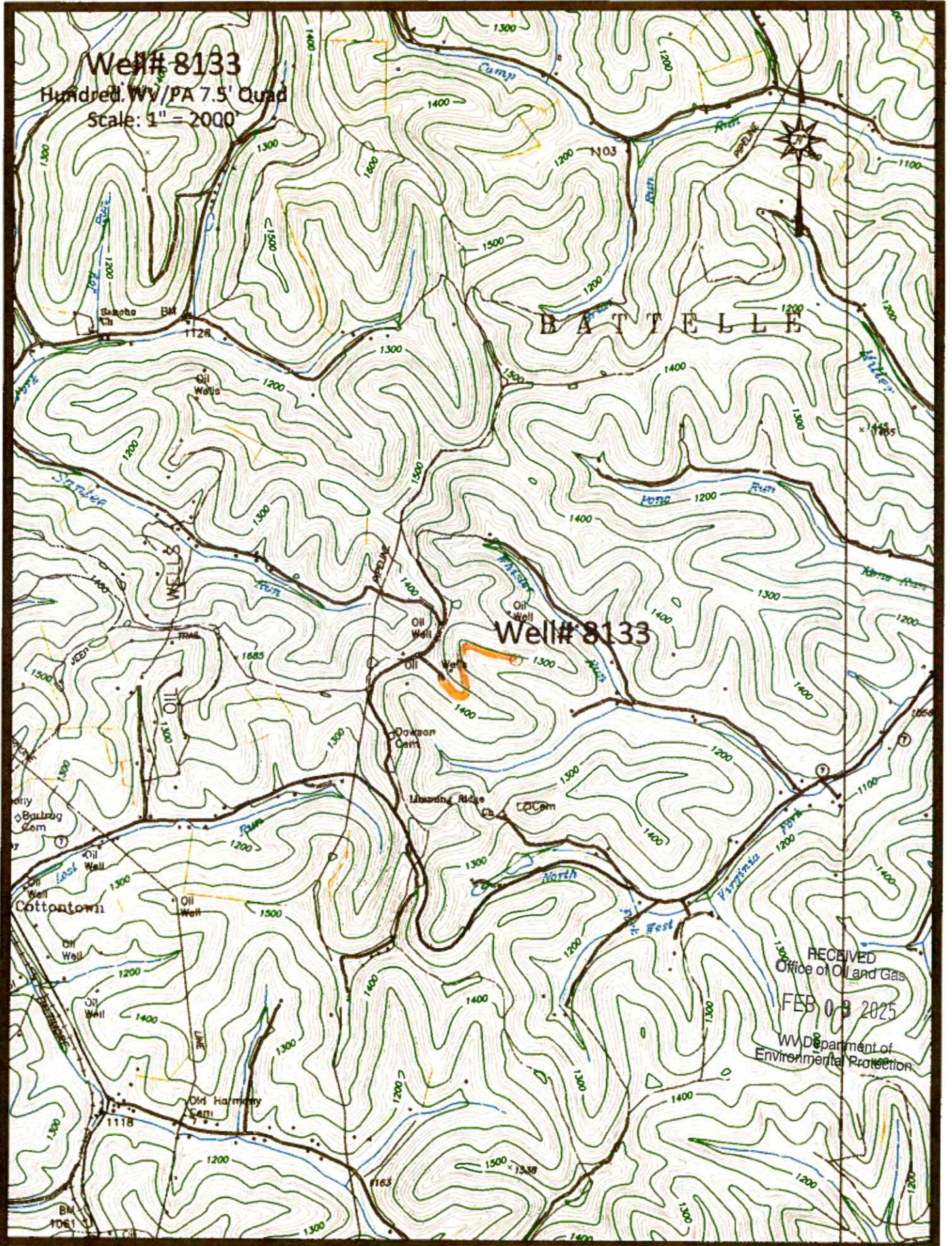
WV Department of  
Environmental Protection

02/14/2025

Well# 8133

Hundred Wv/PA 7.5' Quad

Scale: 1" = 2000'



Well# 8133

RECEIVED  
Office of Oil and Gas  
FEB 03 2025  
WV Department of  
Environmental Protection

Orange Arrow Across Road

02/14/2025

Well# 8133

Hundred WV/PA 7.5' Quad

Scale: 1" = 500'

1400



Whistler

Oil Well

Oil Well

Well# 8133

1300

Wells

Rain

Oil

1400

Dawson Cem

RECEIVED  
Office of Oil and Gas

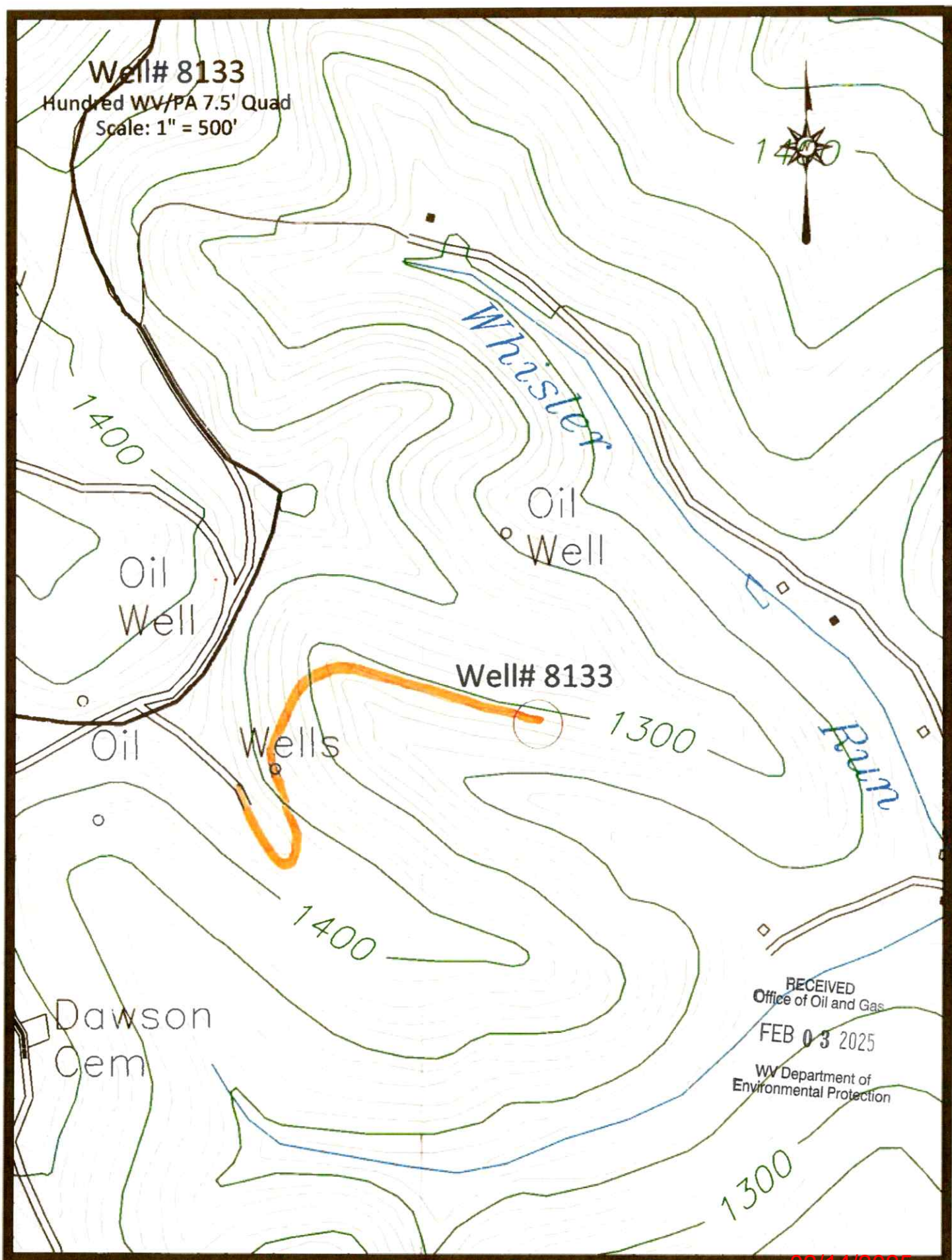
FEB 03 2025

WV Department of  
Environmental Protection

1300

Area (Hand)

02/14/2025





061-11896

061-11487

061-01954

952

061-00609

061-30583

061-01959

103-20437

103-33688

103-03686

103-33688

061-30194

061-01958

061-01955

061-00608

061-30143

061-00786

061-70445

061-30136

061-30281

061-70446

Battelle

061-00743

061-01913

061-30442

061-70447

061-01558

061-01557

WW-7  
8-30-06



West Virginia Department of Environmental Protection  
Office of Oil and Gas  
**WELL LOCATION FORM: GPS**

API: 47-061-30136 WELL NO.: 8133

FARM NAME: WHISTLER 1

RESPONSIBLE PARTY NAME: WEST VIRGINIA LAND RESOURCES INC.

COUNTY: MONONGALIA DISTRICT: BATTELLE

QUADRANGLE: HUNDRED WV

SURFACE OWNER: RICHARD COPELAND

ROYALTY OWNER: \_\_\_\_\_

UTM GPS NORTHING: 4,391,093 m

UTM GPS EASTING: 551,967 m GPS ELEVATION: 392 m

The Responsible Party named above has chosen to submit GPS coordinates in lieu of preparing a new well location plat for a plugging permit or assigned API number on the above well. The Office of Oil and Gas will not accept GPS coordinates that do not meet the following requirements:

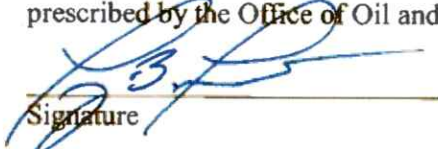
- Datum: NAD 1983, Zone: 17 North, Coordinate Units: meters, Altitude: height above mean sea level (MSL) - meters.
- Accuracy to Datum - 3.05 meters
- Data Collection Method:

Survey grade GPS  : Post Processed Differential   
Real-Time Differential \_\_\_\_\_

Mapping Grade GPS \_\_\_\_\_ : Post Processed Differential \_\_\_\_\_  
Real-Time Differential \_\_\_\_\_

- Letter size copy of the topography map showing the well location.**

I the undersigned, hereby certify this data is correct to the best of my knowledge and belief and shows all the information required by law and the regulations issued and prescribed by the Office of Oil and Gas.

  
Signature

PS 2002  
Title

JANUARY 2, 2025  
Date

RECEIVED  
Office of Oil and Gas

FEB 03 2025

WV Department of  
Environmental Protection