

LATITUDE 39°42'30"

LONGITUDE 80°12'30"

LONGITUDE

7.5'
• 2A

1.29S
1.39W

7.5 OGIS topo location

7.5' loc $\frac{1.29S}{1.39W}$

15' loc $\frac{4.17S}{3.61W}$
(calc.)

Company _____

Farm _____

Quad Blacksville

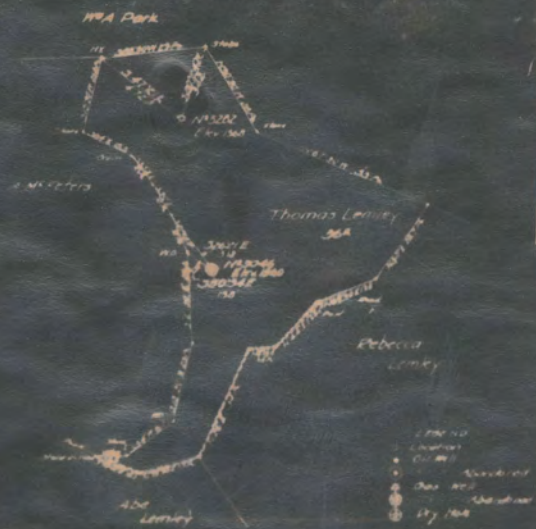
County Monongahela

District Clay

WELL LOCATION MAP

File No. 061-2A

*Thomas Lemley, 300 Acres of 200 Acres
 Located in Clay District Monongalia County*



Engineers Certificate

I hereby certify that this map is correct and shows all the information in the best of my knowledge and belief required by the law for the purpose of the filing of this map.

**AFFIDAVIT IN TRIPLICATE TO TIME AND MANNER OF
PLUGGING AND FILLING WELL**

(REMOVED BY SECTION 8, CHAPTER 22, ACTS 1929)

**WEST VIRGINIA DEPARTMENT OF MINES
OIL AND GAS SECTION**

No Coal operations in this section

COAL OPERATOR

Coal Owner, Unknown.

ADDRESS

Hope Natural Gas Co.

NAME OF WELL OPERATOR

645 West Main Street,
Martinsburg, W. Va.

COMPLETE ADDRESS

September 16th, 1929 19

WELL AND LOCATION

Slay District

Mineralia County

Well No. 2228 Thomas Laylor

Thomas Laylor Firm

North 27 East 28

AFFIDAVIT TO BE MADE IN TRIPLICATE, ONE COPY TO BE KEPT BY REGISTERED MAIL TO THE DEPARTMENT, ONE COPY TO BE DELIVERED BY THE WELL OPERATOR AND THE THIRD COPY (AND OTHER COPIES IF REQUIRED) TO BE MAILED TO EACH WELL OPERATOR ABOVE NAMED AT THEIR RESPECTIVE ADDRESSES.

AFFIDAVIT

STATE OF WEST VIRGINIA.

County of Mineralia) ss.

Frank W. Wilson, John F. Chisler

and

James H. Powell

being first duly sworn according to law depose and say that they are experienced in the work of plugging

and filling oil and gas wells and were employed by Hope Natural Gas Company, well operator, and participated in the work of plugging and filling the above well, that said work was commenced on the

16th day of September, 19 1929, and that the well was plugged and filled in the following manner:

Manner in which sand was plugged:

See on back of this sheet for manner in which the sands and coals were plugged.

Manner in which coal was plugged:

*File
M
S
L
M
S*

(THE ABOVE DECLARATIONS MUST BE IN FULL, AND IN ACCORDANCE WITH THE PROVISIONS OF SECTION 16, OIL AND GAS ACT OF 1929.)

and that the work of plugging and filling said well was completed on the 16th day of September, 1929.

And further deponents swear that

James Powell
John F. Chisler
Frank W. Wilson
W. H. Coody
Notary Public

OCT 22 1929
WEST VIRGINIA

Sworn to and subscribed before me this 16 day of October, 1929.

My Commission expires:

Report in which and was observed

filled and finished out 2000 feet of 1" tubing, bridged hole at 2000 feet, down 1" day hole plug at 2000 feet and filled up with clay to 2000 feet, bridged hole at 2000 feet and finished up with clay to 2000 feet and to water plug 6 feet long at 2000 feet top of water plug hole, down 1" extended lead plug at 2000 feet, gas tested for 48 hrs. and water seal held in 1/4" opening, pulled out with flow of 2000/2000 and ready to pull 2-1/2" casing which to the cut side casing, the 2-1/2" casing was raised from 2000 up to 2000 feet and hole cemented through both Siphonians and 2000/2000 feet, 2-1/2" casing stopped again at 2000 feet and pulled out and hole filled with cement to top.

2000 2000

2000 2000

Report in which and was observed

Account of being unable to pull 2-1/2" casing over the stopped-down hole due to 2000 feet through both Siphonians and 2000/2000 feet, then cemented and pulled into 2-1/2" casing and finished casing and bridge of 2-1/2" casing from 2000 to 2000 through both Siphonians and 2000/2000 feet.

2000

2000

2000

2000 2000 2000 2000 2000 2000
2000 2000 2000 2000 2000 2000

2000 2000

2000 2000 2000 2000 2000 2000