

LATITUDE 39° 45' 00"

80° 15' 00"

LONGITUDE

2.775  
30w

7'5 OGIS topo location

7.5' loc \_\_\_\_\_ 15' loc 2.615  
(calc.) 0.34w

Company \_\_\_\_\_

Farm \_\_\_\_\_

Quad Wadestown (NW)

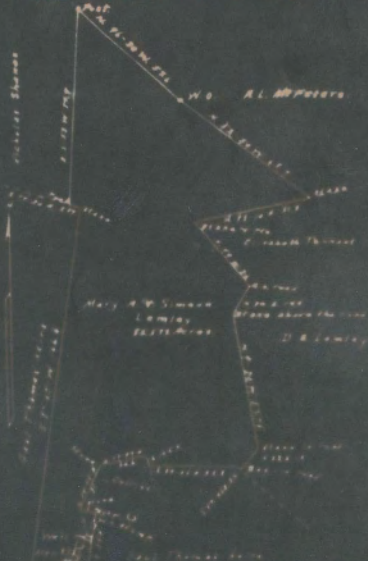
County Monongahela

District Clay

WELL LOCATION MAP

File No. 061-87A

Plot of the abandoned Well No. 1. of John R. Conklin, of Waynesburg, Pa. on the Mary A. & Simon Lemley Farm consisting of 25.577 Acres Located in Barstede District, Monongalia County, West Va



Legally qualified

I, the undersigned hereby certify that this map is correct and true to the information to the best of my knowledge and belief, required by the laws and regulations of the Mining Laws of West Virginia.

*John P. Moore*

Subscribed before me a duly sworn Justice of Monongalia County, West Virginia, this 14th day of August, 1890.

My commission expires  
 August 2, 1890

*Orkey J. Moore*  
 Justice

WEST VIRGINIA DEPARTMENT OF MINES

OIL AND GAS DIVISION

PRELIMINARY DATA SHEET NO. 1

File No. \_\_\_\_\_

Well No. 2

John E. Conklin, Company of WAYNESBURG, Pa.

on the Scale Ledge *May 5 - 1919* <sup>W. Conley</sup> ~~Tract~~

containing AC 85-571 acres. Location \_\_\_\_\_

Clay District, in MORGANTHAU County, West Virginia

The surface of the above tract is owned in fee by Samuel Conroy *May 5 - 1919*

of Blacksville, R.F.D., N. Va. address, and the mineral rights are owned by \_\_\_\_\_

The oil and gas privileges are held under lease by the above named company, and this well is drilled under permit

No. \_\_\_\_\_ issued by the West Virginia Department of Mines, Oil and Gas Division

Drilled about 17 years ago.

Direction of surface at top of well, ~~\_\_\_\_\_~~ 825 feet ~~\_\_\_\_\_~~

The number of feet of the different sized casings used in the well.

3000 feet 2 in. tubing \_\_\_\_\_ steel casing

1700 feet 5-3/16 tubing \_\_\_\_\_ steel casing

1080 feet 5-8/8 tubing \_\_\_\_\_ steel casing

\_\_\_\_\_ feet \_\_\_\_\_ steel casing

2800 feet at \_\_\_\_\_ of 2-3/16 x 2 \_\_\_\_\_ steel casing

\_\_\_\_\_ of \_\_\_\_\_ steel casing

tubing \_\_\_\_\_ to casing perforated at 2675 feet to 3000 feet

\_\_\_\_\_ to casing perforated at \_\_\_\_\_ feet to \_\_\_\_\_ feet

Coal was encountered at 310 feet, thickness 72 inches, and at \_\_\_\_\_

feet, thickness \_\_\_\_\_ inches, and at \_\_\_\_\_ feet, thickness \_\_\_\_\_ inches

\_\_\_\_\_ mines were used as follows: (Give details) None

Date \_\_\_\_\_

Approved \_\_\_\_\_, Geologist

By \_\_\_\_\_

\_\_\_\_\_

9/10/20

John R. Conklin Company

COMPLETION DATA SHEET

Waynesburg, Pa. Address

NO. 2

FORMATION RECORD

Well No. 1

Name	Color	Character	Oil, Gas or Water	Top	Bottom	Thickness	Total Depth	Remarks
Fitt coal	B			.10	51	5		
L Dunkard				887	902	15		100' - 6 3/4"
L Lime				1700	1711	11		1700 - 5 3/8"
Pencil Gave				1710	1722	12		
Big Lime				1722	2770	48		
Big in Jun				1770	2050	280		
50 Feet				2338	2338	50		
Gordon Stray				2425	2510	15		
Bayard				2941	2952	11		
Total depth					3000			
See at				2943 to	2946			

2/24/36

Well was first shut at \_\_\_\_\_ feet; well was shut at \_\_\_\_\_ feet.

First fresh water at \_\_\_\_\_ feet; fresh water at \_\_\_\_\_ feet.

Well was producing \_\_\_\_\_ bbls per day.

Date Sept. 11, 1936 Approved John R. Conklin Owner

NOTE: All bottom formations must be noted as indicated above and all log-calls and all oil and gas yields must be recorded under their proper geological names in the details on well to say that same accurately used in the return for each month.