

LATITUDE 39°40'00"

80°20'08"

LONGITUDE

7.5'

7.5 OGIS topo location

7.5' loc	$\frac{1,825}{1.11W}$	15' loc	$\frac{1,825}{(calc.)}$
			$\frac{1.11W}{1.11W}$

Company \_\_\_\_\_

Farm \_\_\_\_\_

Quad Wadestown (Mannington C)

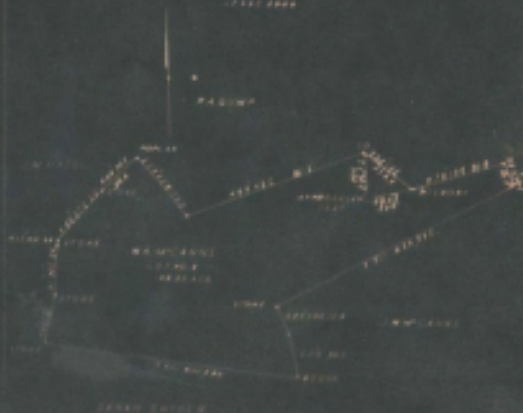
County Monongahela

District Battelle

WELL LOCATION MAP

File No. Del-129A

PLAN OF THE PROPOSED ABANDONMENT OF WELL NO. 189 OF  
 UNION GAS & OIL FIELD, CORPORATION OF MISSOURI, IN  
 PART OF WILLIAM KIRKNEY PLAT CONSISTING OF SIX ACRES  
 LOCATED IN SATTLEBERRY DISTRICT, WOODRUFF COUNTY, MISSOURI  
 1911



WITNESSES AND CERTIFICATE

I, the undersigned, being sworn, depose that the within plat was prepared  
 and certified according to the laws of the State of Missouri and that the same  
 is a true and correct copy of the original filed of record in my office.

J. W. McNamee  
 1911

## WEST VIRGINIA DEPARTMENT OF MINES

OIL AND GAS DIVISION

## PRELIMINARY DATA SHEET NO. 1

(8)

W. M. 1000 (7-20-1927)

File No. \_\_\_\_\_

The Manufacturers Light &amp; Heat Company of 500 Union Trust Bldg.,

Pittsburgh, Pa., as the William Sawyer

Company, 300 \_\_\_\_\_

Pittville \_\_\_\_\_

The surface of the above tract is owned in fee by \_\_\_\_\_

500 Union Trust Bldg., \_\_\_\_\_

The Manufacturers Light &amp; Heat Co., \_\_\_\_\_

Union Trust Bldg. &amp; Oil Corporation \_\_\_\_\_

The oil and gas privileges are held under lease by the above named company, and this well is drilled under permit

No. \_\_\_\_\_

prior to June 1st, 1927 \_\_\_\_\_

The number of studies at top of well, 1507 ft. \_\_\_\_\_

The number of feet of the different steel casings used in the well, \_\_\_\_\_

\_\_\_\_\_

1507 feet 30" dia. top 1600 feet 2 1/2" dia. top

2200 feet 4 1/2" dia. top 2000 feet 2 1/2" dia. top

\_\_\_\_\_

\_\_\_\_\_

\_\_\_\_\_

\_\_\_\_\_

\_\_\_\_\_

Casing was assembled at 300 feet, 1600 feet, and at 2200

feet, 2000 feet, and at 1600 feet, 2000 feet.

\_\_\_\_\_

\_\_\_\_\_

\_\_\_\_\_

\_\_\_\_\_

\_\_\_\_\_

\_\_\_\_\_

\_\_\_\_\_

\_\_\_\_\_

THE MANUFACTURING LIGHT & HEAT Company

COMPLETION DATA SHEET

600 Union Trust Bldg., Pittsburgh, Pa. Address

No. 2

Well No. 9 - 1195 (100-599)

William Kenney Farm

FORMATION RECORD

Name	Color	Character	Oil, Gas or Water	Top	Bottom	Thickness	Total Depth	Remarks
Wagnerburg Coal				920	916	6		2 27' - 10"
Wagnerburg Coal				1150	1137	7		
Pittsburgh Coal				1250	1239	9		
Big Buckard Sand				1400	1392	17		1400' - 8 1/2"
Gas Sand				1500	1517	72		
Salt Sand				2150	2262	112		Hole filled 1500 feet with water at total depth of 2200 feet
Stray sand				2502	2500	26		
Big Lane				2670	2595	90		2 3 1/2' - 10 1/2"
Big Injan				2950	2760	210		Water at 20 ft. in sand - 4 barrels per.
Fifty Foot sand				3170	3237	67		
Campbell Run Sand				3400	3430	30		Hole filled with oil at a total depth of 327 ft.
Gordon Sand				3451	3464	25		
Fourth Sand				3494	3510	16		Oil 7 ft. in Fourth Sand, or at a total depth of 3207 ft.
								Well was finished at a total depth of 3520 ft. and was drilling in Line Street

Well was not shot at \_\_\_\_\_ feet; well was shot at \_\_\_\_\_ feet

First fresh water at \_\_\_\_\_ feet; fresh water at \_\_\_\_\_ feet

Well was \_\_\_\_\_ producing \_\_\_\_\_ lbs. \_\_\_\_\_

Wm. H. Fowler

MON-129-A

Battelle District, Monongalia County, W. Va.  
By The Manufacturers Light & Heat Co., 800 Union Trust Bldg.,  
Pittsburgh, Pa.  
On 310 acres, surface owned by Agnes B. Whitlatch, 259 Coleman Bldg.,  
Seattle, Wash. (%John P. Hanson); and mineral rights by The  
Manufacturers Light & Heat Co. and Union Gasoline & Oil Corpe-  
ration, 800 Union Trust Bldg., Pittsburgh, Pa.  
Drilled prior to June 1, 1929.  
Elevation, 1327' L.  
10" casing, 287'; 8 1/2", 1625'; 6-5/8", 2325'; 5-5/8", 2678'.  
Coal was encountered at 910-916, 1150-1157, and 1250-1259'.  
Abandonment reported to Dept. of Mines August 14, 1935.

	Top.	Bottom.	Thickness.
Waynesburg Coal	910	- 916	6
Mapletown (Sewickley) Coal	1150	- 1157	7
Pittsburgh Coal	1250	- 1259	9
Big Dunkard Sand	1845	- 1892	47
Gas Sand	1945	- 2017	72
Salt Sand (hole filled 1500' with water at total depth of 2200')	2150	- 2262	112
Stray sand	2302	- 2328	26
Big Lime	2478	- 2558	80
Big Injun Sand (water at 96' in sand; 4 bailers per hour?; at 2654')	2558	- 2768	210
50-Ft. Sand	3170	- 3257	87
Campbells Run Sand (hole filled with oil at a total depth of 3407')	3400	- 3430	30
Gordon Sand	3431	- 3456	25
Fourth Sand (oil 7' in Fourth Sand, or at a total depth of 3503-3509')	3496	- 3510 1/2	14 1/2
Well was finished at a total depth of and was drilling in limestone.		3510 1/2	

<p>Farm _____</p> <p>Quad <u>Wadestown (Mannington C)</u></p> <p>County <u>Monongahela</u></p> <p>District <u>Battelle</u></p>	<p>WELL LOCATION MAP</p> <p>File No. <u>Del-129A</u></p>
--	--

WEST VIRGINIA DEPARTMENT OF MINES  
OIL AND GAS DIVISION

WEST VIRGINIA DEPARTMENT OF MINES  
OIL AND GAS DIVISION

James J. McEvoy

WELL OPERATOR OR OWNER

The Manufacturers Light and Heat Company  
Union Feedline and Oil Company

NAME OF WELL OPERATOR

500 Calmes Building, Seattle, Wash.

500 Union Trust Building, Pittsburgh, Penn.

ADDRESS

October 27th, 1935

WELL AND LOCATION

Seattle District

Kernsville County

Well No. 24.3 (1932 P.I. No. 10, 11, 12, 13, 14)

William Henry Well

AFFIDAVIT

STATE OF WEST VIRGINIA,

County of Wetzel

Edw. T. Seab and Carl J. Seab

being first duly sworn according to law depose and say that they are experienced in the work of plugging

and filling oil and gas wells and were employed by Union Feedline and Oil Company, well owners,

and participated in the work of plugging and filling the above well, that said work was commenced on the

24th day of October, 1935, and that the well was plugged and filled in

the following manner:

Manner in which well was plugged: Removed 2" tubing, filled with clay 3000 tubing; set Plug  
Clay to 2500; filled with clay 3000 to 3500; set Plug 3000 to 3500; fill with clay 3500 to 3800;  
set Plug 3500 to 3800; run Cement Plug to 3800 casing hole completely; fill with clay 3800 to  
4100; set Plug 3800 to 4100; fill with clay 4100 to 4500; Pull 5 7/8" casing; filled with clay  
4500 to 5000; set Plug 4500 to 5000; filled with clay 5000 to 5500; set Plug 5000 to 5500; fill  
with clay 5500 to 6000; Pull 5 7/8" casing; set Plug 5500 to 6000; fill with clay 6000 tubing;  
set Plug 6000 to 6500; fill with clay 6500 to 7000; set Plug 7000 to 7500; fill with clay 7500  
to 8000; Plug 1000 to 1500; fill with clay 1500 to 1800; set Plug 1800 to 2200; fill with clay  
2200 to 2500; Pull 3" casing; fill with clay 2500 to 2700; set Plug at 2700th 1500

Manner in which well was plugged:

Set Working Casing Number at 1250 - 30 feet below Pittsburgh Coal with vent pipe  
extending to surface; Cement 1150 to 1250 above Pittsburgh Coal to 20 feet above casing; fill with  
clay 1250 to 1150; Cement 1150 to 1170 above the Naphtalmans Coal; fill with clay 1170 to 1150  
Cement 115 to 500 above Naphtalmans Coal; fill with clay to surface

Description of equipment.

Used a cement cement 2 1/2" x 3 1/2" with 2" Vent Pipe extending thru  
and a return fill on top of vent pipe. Cement inserted with Dets Horizontal, Turn Hole and Well

and that the work of plugging and filling said well was completed on the 27th day of October, 1935

Subscribed

And further deposes with us.

Edw. T. Seab  
Carl J. Seab

129