

Latitude

	.83s
	.44w

Longitude

Topo Location

7.5' Loc. \_\_\_\_\_ 15' Loc. \_\_\_\_\_  
 \_\_\_\_\_ (calc.) \_\_\_\_\_

Company LJ House Convex Glass Co

Farm LN John Jr #4

15' Quad \_\_\_\_\_  
(sec.)

7.5' Quad Morgantown North

District Cass

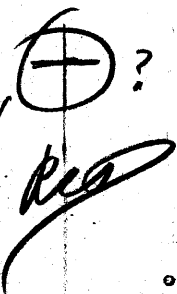
WELL LOCATION PLAT

County 061 Permit 30177

M. J. Garlow

1.80 W  
3.45 S

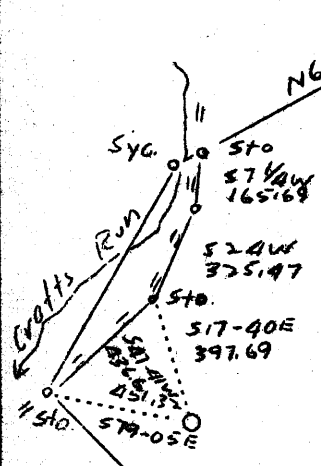
Sam'l. & Thomas  
Lozball



M. Van Voorhis

Fred Moore

188A ±



N44 W 990

Festus Tapp. B.O.

3.45 S  
1.80 W

Higberger 1.83 W 79° 55'  
3.49 S 79° 45'

Abd.

APR 11 1938

Company L. J. Houze Safety Glass Co.  
 Address Point Marion, Pa.  
 Farm Formerly L. N. John, Jr.  
 Tract Acres 133 Lease No. \_\_\_\_\_  
 Well (Farm) No. 2 Serial No. \_\_\_\_\_  
 Elevation (Spirit Level) 1027.82  
 Quadrangle Morgantown **(NW)**  
 County Monongalia District Cass  
 Engineer James M. Cabbage  
 Engineer's Registration No. 3185 (Penna)  
 File No. \_\_\_\_\_ Drawing No. 137  
 Date July 2, 1936 Scale 1" = 60'

STATE OF WEST VIRGINIA  
Department of Mines  
OIL AND GAS DIVISION  
CHARLESTON

WELL LOCATION MAP

File No. MON-177A

Denotes location of well on United States Topographic Maps, scale 1 to 62,500, latitude and longitude lines being represented by border lines as shown.

Denotes one inch spaces on border line of original tracing.

Cass District, Monongalia County, W. Va.  
 By L. J. House Convex Glass Co., G. E. Van Voorhis, Supt.,  
 Hilliner, Pa.

On 188 acres.

Elevation, 1027.82' L.

Surface owned by Rufus Lazzell Estate.

Drilling commenced Feb. 15, 1929; completed, Apr. 18, 1929.

Open flow, 9/10ths water in 1".

6" casing, 1182'.

Gas well. Abandonment reported to Dept. of Mines Mar. 26, 1938.

Record to RCT from Mrs. Griffith April 14, 1938.

	Top.	Bottom.
Clay, yellow, soft	0	6
Sand	6	13
Lime and slate	13	348
Sand	348	378
Slate	378	389
Little Darkard Sand, white, hard	389	420
Slate, dark, soft	420	480
Big Darkard Sand, white, hard	480	524
Slate, white, soft	524	528
Gas Sand, gray, hard	524	616
Slate and lime, dark, hard	616	678
Slate	678	734
Salt Sand, dark, medium (salt water, 855')	830	980
Slate and lime	980	1135
Little Lime, dark, soft	1135	1148
Pencil Cove	1148	1180
Big Lime, dark, hard	1180	1260
Big Injun Sand, white, hard (gas, 1360')	1260	1410

WEST VIRGINIA DEPARTMENT OF MINES  
OIL AND GAS DIVISION

252

WELL RECORD

Oil or Gas Well Gas  
(Kind)

Permit No. 17777

Company L. J. House Convex Glass Company Casing and Tubing  
 Address G. B. Van Voorhis, Supt., Dilliner, Pa.  
 Farm Lemuel H. John Acres 186  
 Location (waters) \_\_\_\_\_  
 Well No. 41829 Elev. 1027.82  
 District Cass County Monongalia  
 The surface of tract is owned in fee by Rufus Labell Est  
 Mineral rights are owned by \_\_\_\_\_  
 Drilling commenced Feb. 15, 1929  
 Drilling completed Apr. 18, 1929  
 Date shot \_\_\_\_\_ Depth of shot \_\_\_\_\_  
 Open Flow 0 /10ths Water in 1 Inch  
 /10ths Merc. in \_\_\_\_\_ Inch  
 Volume \_\_\_\_\_ Cu. Ft.  
 Rock Pressure 0 lbs. \_\_\_\_\_ hrs.  
 Oil \_\_\_\_\_ bbls., 1st 24 hrs.  
 Fresh water \_\_\_\_\_ feet \_\_\_\_\_ feet  
 Salt water \_\_\_\_\_ feet \_\_\_\_\_ feet

Used in Drilling \_\_\_\_\_  
 Left in Well 1182  
 Packers \_\_\_\_\_  
 Kind of Packer \_\_\_\_\_  
 Size of \_\_\_\_\_  
 Depth set \_\_\_\_\_  
 Perf. top \_\_\_\_\_  
 Perf. bottom \_\_\_\_\_  
 Perf. top \_\_\_\_\_  
 Perf. bottom \_\_\_\_\_

CASING CEMENTED \_\_\_\_\_ SIZE \_\_\_\_\_ No. FT. \_\_\_\_\_ Date \_\_\_\_\_  
 COAL WAS ENCOUNTERED AT \_\_\_\_\_ FEET \_\_\_\_\_ INCHES  
 FEET \_\_\_\_\_ INCHES FEET \_\_\_\_\_ INCHES  
 FEET \_\_\_\_\_ INCHES FEET \_\_\_\_\_ INCHES

Formation	Color	Hard or Soft	Top	Bottom	Oil Gas or Water	Depth Found	Remarks
Clay	Yellow	soft	0	6			
Sand		"	6	13			
Lime & slate			15	348			
Sand			348	378			
Slate			378	389			
L. Dunkard	dark white	Hard	389	420			
Slate	Dark	Soft	420	480			
Big Dunkard	White	Hard	480	524			
Slate	White	soft	524	528			
Gas sand	Grey	Hard	554	616			
Slate & lime	Dark	Hard	616	678			
Slate			678	724			
Salt sand	Dark	Medium	830	980	salt water	855	
Slate & lime			980	1135			
Little Lime	Dark	Soft	1135	1148			
Pencil Cave			1148	1180			
Big Lime	Dark	Hard	1180	1260			
Big Injun	White	Hard	1260	1410	Gas	1360	

Formation	Color	Hard or Soft	Top	Bottom	Oil, Gas or Water	Depth Found	Remarks

Date March 26., 1938.

APPROVED L. J. Houze Convex Glass Co., Owner

By J. C. Paul  
 (Title) Flu. Supt.