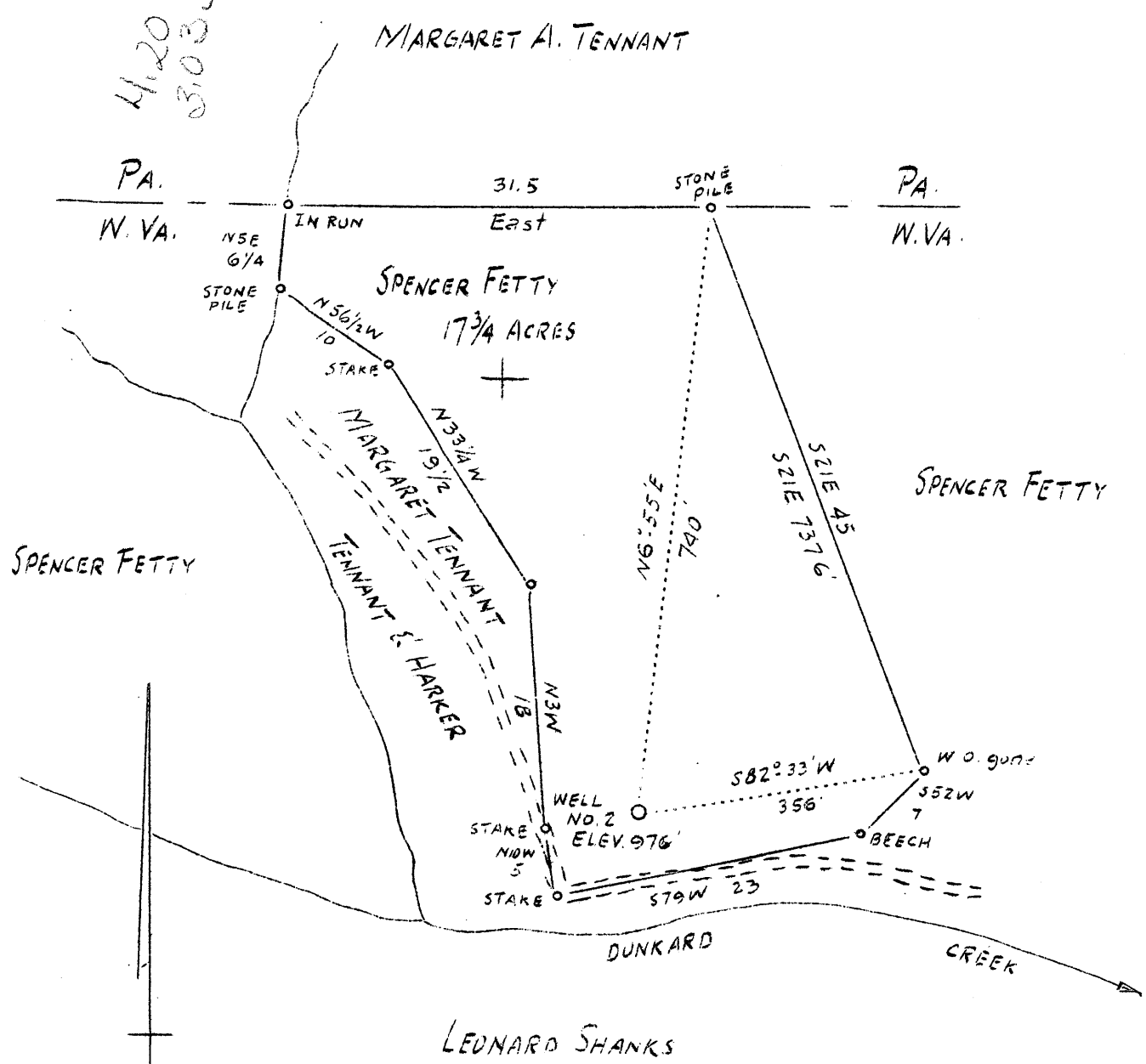


LATITUDE 39° 45'

LONGITUDE 80° 05'

4.20 W
3.03 S



COAL NOT OPERATED

3.03 S
4.20 W

3.1 S
4.3 W

ABANDONMENT

Company	John Conklin
Address	Wynesburg Pa.
Farm	Spencer Fetty
Tract	one
Acres	17 3/4
Well (Form) No.	2
Elev. (Spirit Level)	976'
Quadrangle	Blacksville
County	Monongalia
District	Clay
Eng.	A. L. Headley
Date	7-27-1938
Scale	1 inch- 200 ft.

STATE OF WEST VIRGINIA
Department of Mines
OIL AND GAS DIVISION
Charleston

WELL LOCATION MAP

MON-187A

File No.

x Denotes location of well on U. S. Topographic Maps, scale 1 to 62,500, latitude and longitude lines being represented by border lines as shown.

- Denotes one inch spaces on border line of original tracing.