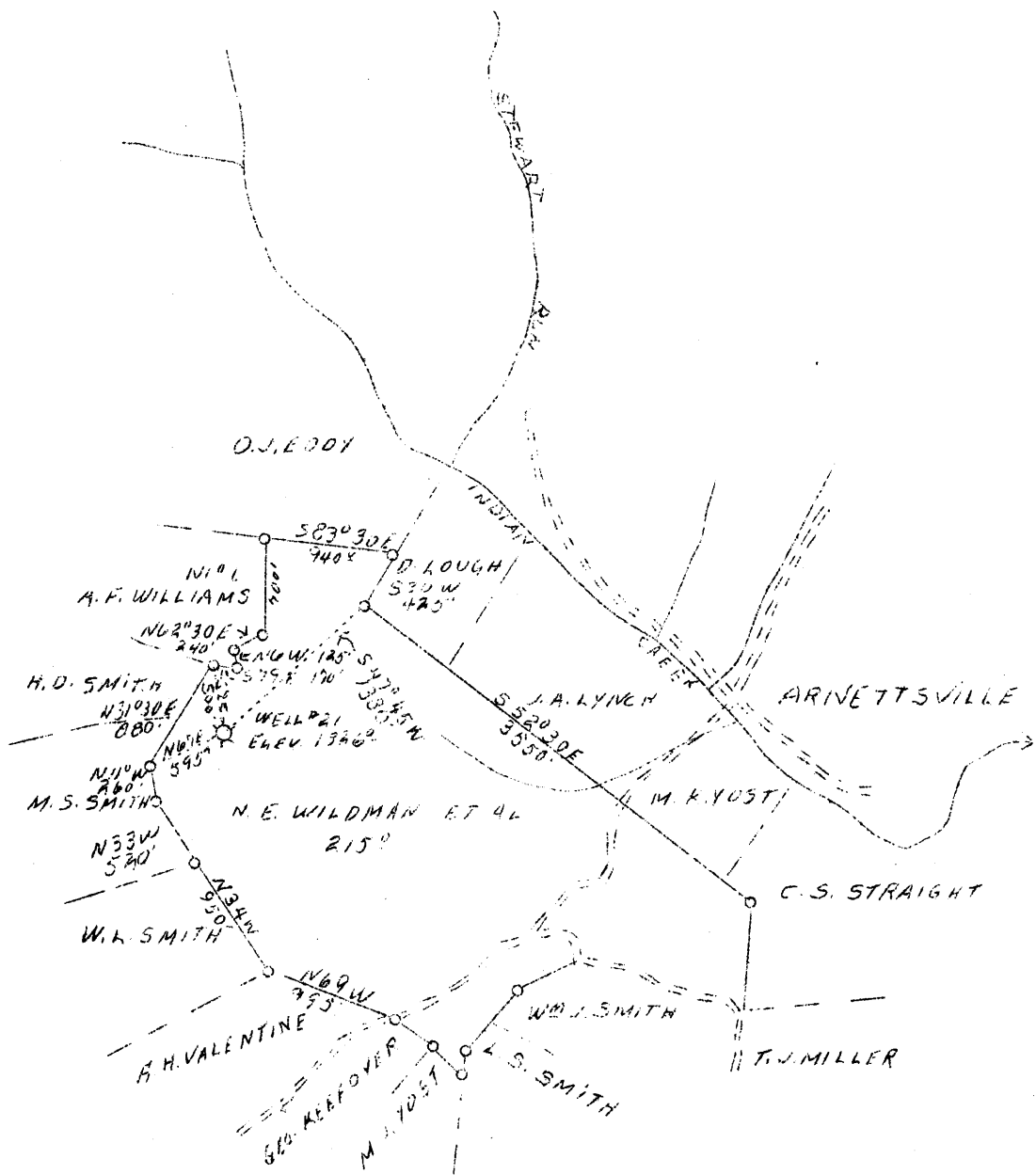


LATITUDE 39° 35'



1.47W  
0.58S

LONGITUDE 80° 00' W



0.58S  
1.45W  
1.59S  
1.48W

A.B.D.

Company	Owens Illinois Glas Co. Gas Department	STATE OF WEST VIRGINIA Department of Mines
Address	B-1375, Charleston, W.Va.	OIL & GAS DIVISION
Farm	N. E. Wildman, et al	Charleston
Acres	215	
Lease No.	47	
Well (Farm) No.	One	
Serial No.	21	
Elevation (SP)	1326.0	
Quadrangle	Blacksville	
County	Monongalia	
District	Grant	
Engineer	T. S. Flournoy	
Eng. Reg. No.	269	
Date	Oct. 20, 1938	
Scale	1" - 1320'	

WELL LOCATION MAP  
File No. MOA 188-A

x Denotes location of well on U. S. Topographic Maps, scale 1 to 62,500, latitude and longitude lines being represented by border lines as shown.  
- Denotes one inch spaces on border line of original tracing.