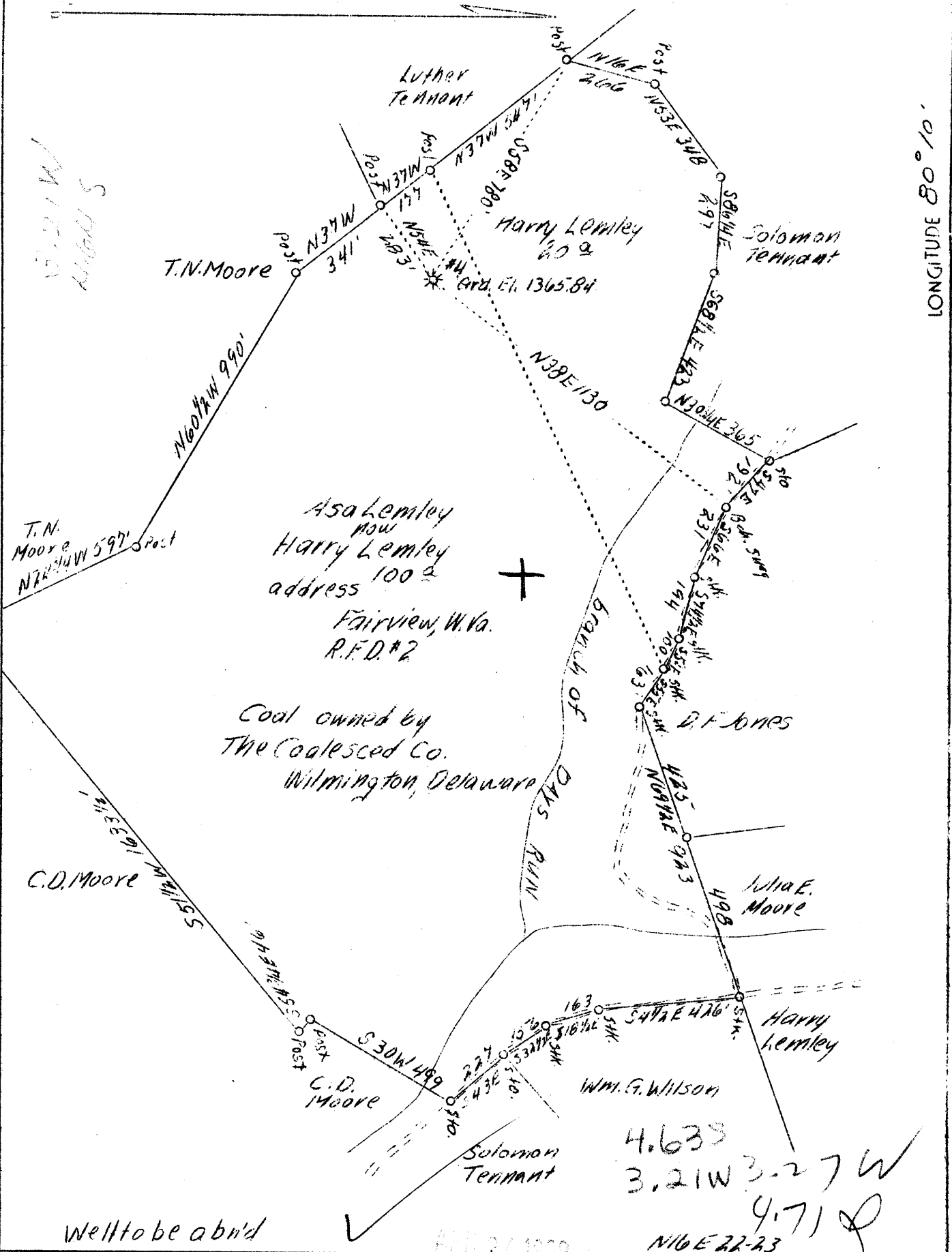


LATITUDE 39° 45'

LONGITUDE 80° 10'



Company South Penn Oil Co.
 Address 411 V Ave. Pittsburgh, Pa.
 Farm Asa Lemley
 Acres 300
 Lease No. 56349
 Well(Farm)No. 4
 Quadrangle Blacksville
 County Monongalia
 District Clay
 Eng. E.C. Tabler
 Date 4/4/39
 Scale 1" - 400'

STATE OF WEST VIRGINIA
 Department of Mines
 OIL AND GAS DIVISION
 Charleston

WELL LOCATION MAP

File No. MON-197-A

x Denotes location of well on U.S. Topographic Maps, scale 1 to 62,500, latitude and longitude lines being represented by border lines as shown.

- Denotes one inch spaces on border line of original tracing.

WEST VIRGINIA DEPARTMENT OF MINES
OIL AND GAS DIVISION

270

WELL RECORD

Permit No. 197-A

Oil or Gas Well GAS
(Kind)

Company SOUTH PENN OIL COMPANY
Address 411 Seventh Ave., Pittsburgh, Pa.
Farm Asa Lemley Acres 300
Location (waters) _____
Well No. 2 Elev. 1365.84
District Clay County Monongalia
The surface of tract is owned in fee by Harry Lemley
R.F.D. No. 2, Address Fairview, W. Va.
Mineral rights are owned by Telluric Co. et al
Morgantown, W. Va.
Drilling commenced January 5, 1922
Drilling completed April 29, 1922
Date shot -- Depth of shot --
Open Flow 8/10ths Water in 5-3/16" Inch
-- /10ths Merc. in -- Inch
Volume -- Cu. Ft.
Rock Pressure -- lbs. -- hrs.
Oil -- bbls., 1st 24 hrs.
Fresh water -- feet -- feet
Salt water 1880-1936 feet -- feet

Casing and Tubing	Used in Drilling	Left in Well	Packers
Size			
16			Kind of Packer
13	178' 1"		Dresser
10	1346' 1"		Size of
8 1/4	2026' 6"		2" X 4" X 16"
6 5/8	2257'		Depth set
5 3/16	2925' 6"		3355'
4 1/2	331' 6"		Perf. top
2			Perf. bottom
Liners Used			Perf. top
			Perf. bottom
CASING CEMENTED <u>--</u> SIZE <u>--</u> No. FT. <u>--</u> Date <u>--</u>			
COAL WAS ENCOUNTERED AT <u>989</u> FEET <u>72</u> INCHES			
<u>--</u> FEET <u>--</u> INCHES <u>--</u> FEET <u>--</u> INCHES			
<u>--</u> FEET <u>--</u> INCHES <u>--</u> FEET <u>--</u> INCHES			

Formation	Color	Hard or Soft	Top	Bottom	Oil Gas or Water	Depth Found	Remarks
Pittsburgh Coal			989	995			
Little Dunkard			1434	1449			
Big Dunkard			1469	1514			
Gas Sand			1666	1701			
Salt Sand			1770	2045			
					Water	1880-1936	Hole full
Little Limes			2227	2237			
Pencil Cave			2237	2244			
Big Lime			2244	2300			
Big Injun Sand			2300	2485			
					Oil & Water	2396-2401	
Squaw Sand			2490	2520			
Berea Grit			2765	2787			
Gantz Sand			2860	2880			
Fifty Foot Sand			2890	2985			
Thirty Foot Sand			3028	3058			
Gordon Stray Sand			3126	3150			
Gordon Sand			3225	3241			
4-1/2" Liner set				3232			
Fourth Sand			3262	3304			
Sand			3350	3360			
Fifth Sand			3400	3410	Gas	3403-3405	
Total Depth				3413			

