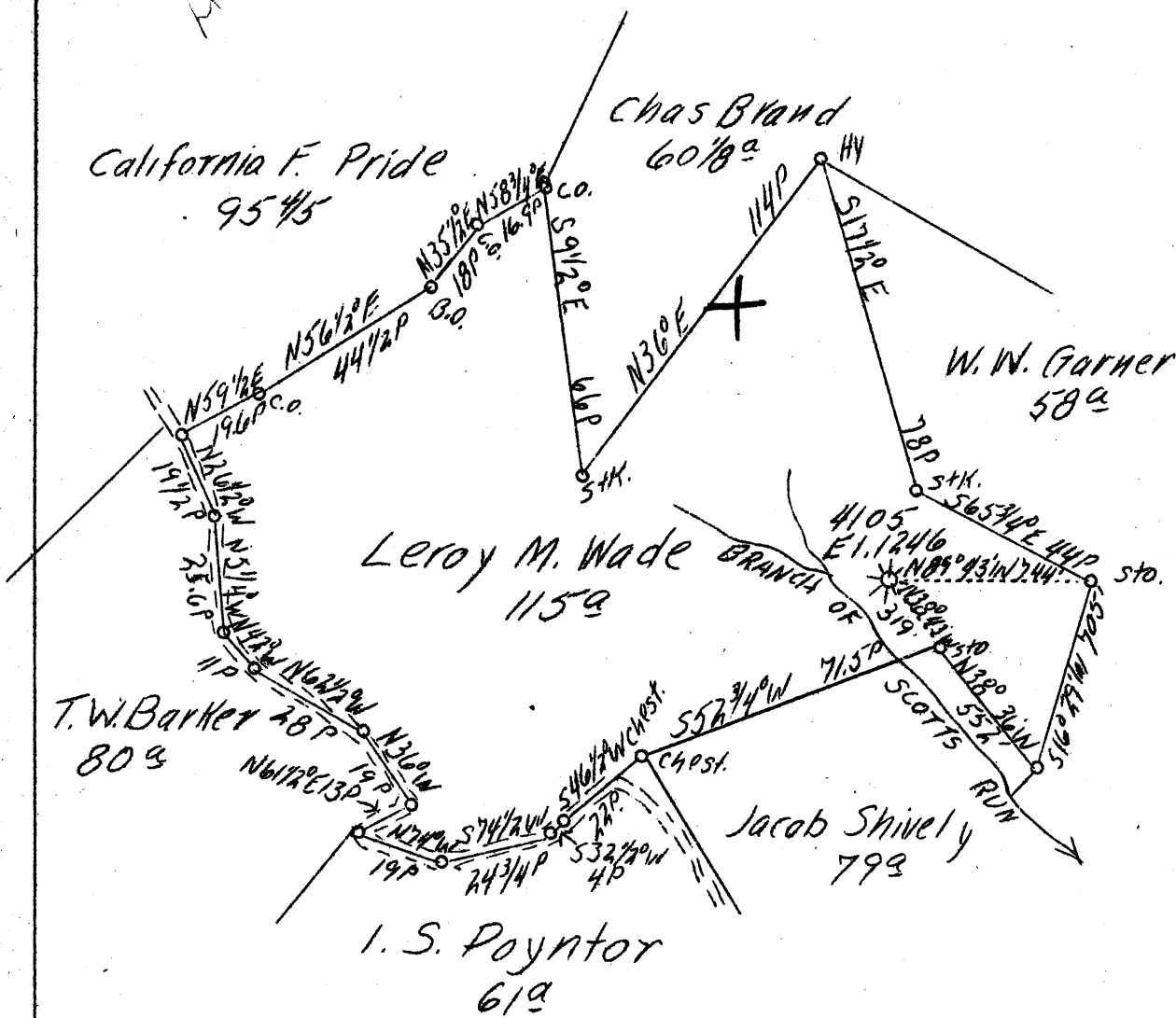


3.14 W  
4.08 S



3.2 W  
4.12 S

✓ JUN 19 1939

ABD.

F. B. 673 P. 22-23

Company	Hope Natural Gas Co.
Address	Clarksburg, W. Va.
Farm	L. M. Wade
Acres	115
Lease No.	23275
Well (Farm) No.	-
Serial No.	4105
Elevation (SL)	1246
Quadrangle	Blacksville
County	Monongalia
District	Cass
Engineer	W. M. Bowers
Eng. Reg. No.	900
Date	June 9, 1939
Scale	1" = 40 poles



STATE OF WEST VIRGINIA  
 Department of Mines  
 OIL & GAS DIVISION  
 Charleston

WELL LOCATION MAP

File No. MON-202-A

x Denotes location of well on U. S. Topographic Maps, scale 1 to 62,500, latitude and longitude lines being represented by border lines as shown.

- Denotes one inch spaces on border line of original tracing.

STATE OF WEST VIRGINIA  
DEPARTMENT OF MINES  
OIL AND GAS DIVISION

281

WELL RECORD

Permit No. 7027A  
Blacksville NE

Oil or Gas Well Gas  
(Kind)

Company Hope Natural Gas Company  
Address Clarksburg, W. Va.  
Farm L. M. Wade Acres 115  
Location (waters) Scotts Run  
Well No. 4105 Elev. 1246  
District Cass County Monongalia  
The surface of tract is owned in fee by Charles Wade  
R. #1 Address Metz, W. Va.  
Mineral rights are owned by \_\_\_\_\_  
Address \_\_\_\_\_  
Drilling commenced 2-4-1916  
Drilling completed 5-8-1916  
Date shot 5-12-1916 Depth of shot Injun & Gantz  
Open Flow /10ths Water in \_\_\_\_\_ Inch  
/10ths Merc. in \_\_\_\_\_ Inch  
Volume \_\_\_\_\_ Cu. Ft.  
Rock Pressure \_\_\_\_\_ lbs. \_\_\_\_\_ hrs.  
Oil \_\_\_\_\_ bbls., 1st 24 hrs.  
Fresh water 495 feet \_\_\_\_\_ feet  
Salt water 1360-1386-1405 feet \_\_\_\_\_ feet

Casing and Tubing	Used in Drilling	Left in Well	Packers
Size			Kind of Packer
16			
13			
10	522	Pulled	Size of
8 1/4	1310	1310	
6 5/8	1753	1753	Depth set
5 3/16			
3			Perf. top
2	2419	Pulled	Perf. bottom
Packers Used			Perf. top
			Perf. bottom

CASING CEMENTED \_\_\_\_\_ SIZE \_\_\_\_\_ No. FT. \_\_\_\_\_ Date \_\_\_\_\_  
Not cemented  
COAL WAS ENCOUNTERED AT 133 FEET 84 INCHES  
417 FEET 60 INCHES 495 FEET 60 INCHES  
\_\_\_\_\_ FEET \_\_\_\_\_ INCHES \_\_\_\_\_ FEET \_\_\_\_\_ INCHES

Formation	Color	Hard or Soft	Top	Bottom	Oil Gas or Water	Depth Found	Remarks
Coal			133	140			
Coal			417	422			
Pittsburgh Coal			495	500	Water	495	
Little Dunkard Sand			975	990			
Big Dunkard Sand			1080	1120			
Gas Sand			1175	1207			
First Salt Sand			1280	1329			
Second Salt Sand			1335	1435	Water	1360-1386-1405	
Sand			1460	1520			
Maxon Sand			1597	1614			
Little Lime			1668	1680			
Pencil Cave			1680	1688			
Big Lime			1688	1735			
Big Injun Sand			1735	1964	Gas	1879	
Berwa Sand			2036	2053			
Gantz Sand			2344	2407	Gas	2365	
Total Depth			2419				

