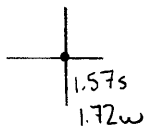


Latitude

Longitude



Topo Location

7.5' Loc. \_\_\_\_\_ 15' Loc. \_\_\_\_\_  
 \_\_\_\_\_ (calc.) \_\_\_\_\_

Company Consol O+G Co

Farm NA Moore # 5156

15' Quad \_\_\_\_\_  
(sec.)

7.5' Quad Blacksville

District Clay

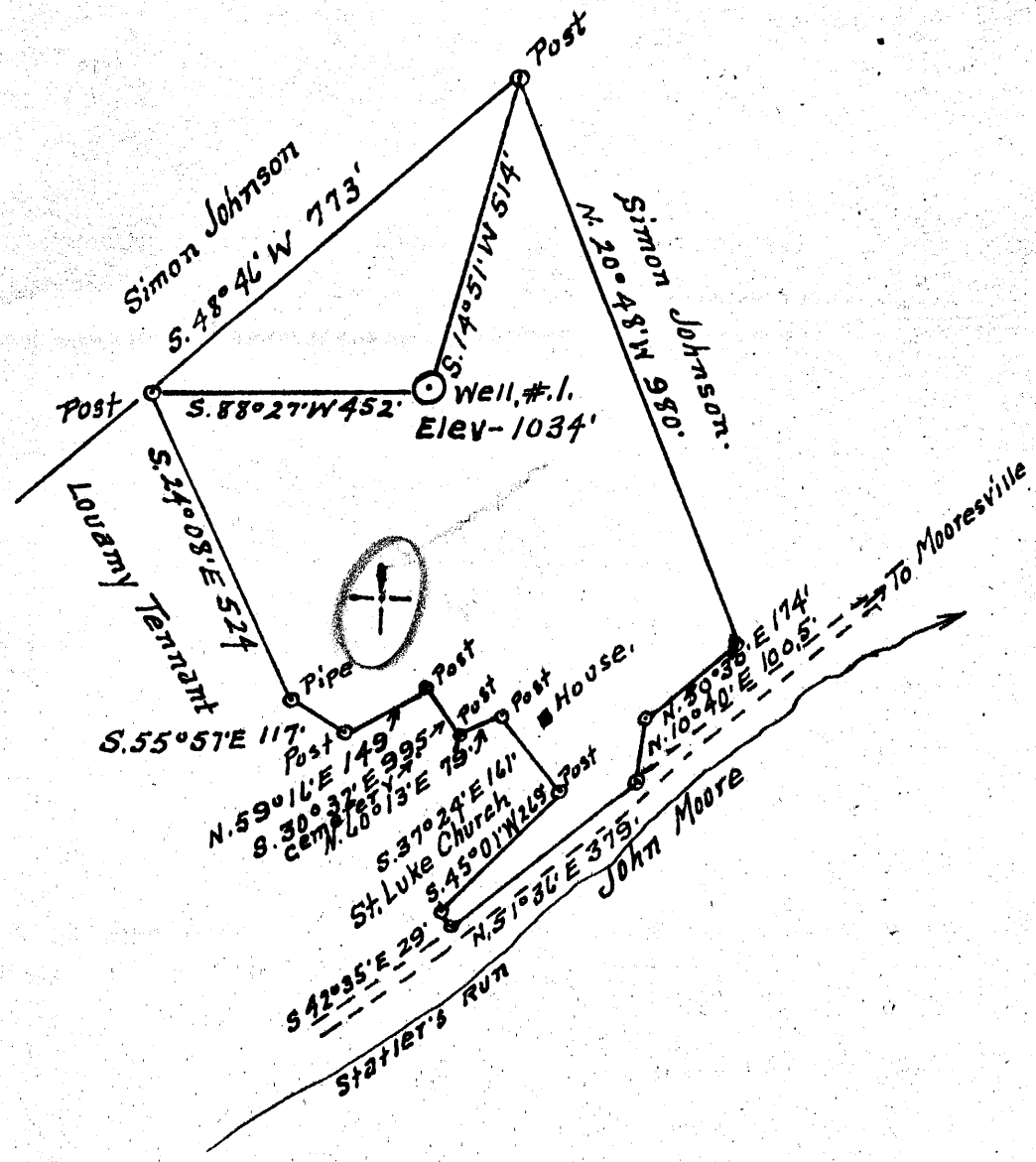
WELL LOCATION PLAT

County 061 Permit 30210

Latitude 39° 45'

4.36 S  
3.65 W

Longitude 80° 05'



Surface = Maxine Varner  
R. #. 3, Fairview, W. Va.  
Coal = Consolidation Coal Co  
Pursglove W. Va.

3.7 W  
4.4 S

New Location...   
Drill Deeper.....   
Abandonment.....

OCT 12 1953

Company Dunn-Mar Oil & Gas Co  
Address Waynesburg, Pa  
Farm Nimrod A. Moore  
Tract 1 Acres 14 Lease No. \_\_\_\_\_  
Well (Farm) No. 1 Serial No. \_\_\_\_\_  
Elevation (Spirit Level) 1034'  
Quadrangle Blacksville  
County Monongalia District Clay  
Engineer A. L. Headley  
Engineer's Registration No. 2021  
File No. \_\_\_\_\_ Drawing No. \_\_\_\_\_  
Date 9-6-1953 Scale 1" = 300'

STATE OF WEST VIRGINIA  
DEPARTMENT OF MINES  
OIL AND GAS DIVISION  
CHARLESTON

WELL LOCATION MAP  
FILE NO. MON-571-A

+ Denotes location of well on United States Topographic Maps, scale 1 to 62,500, latitude and longitude lines being represented by border lines as shown.  
- Denotes one inch spaces on border line of original tracing.

NIMROD A MOORE NO. 1 - DUNN-MAR O. & G. CO. - MON-571-A

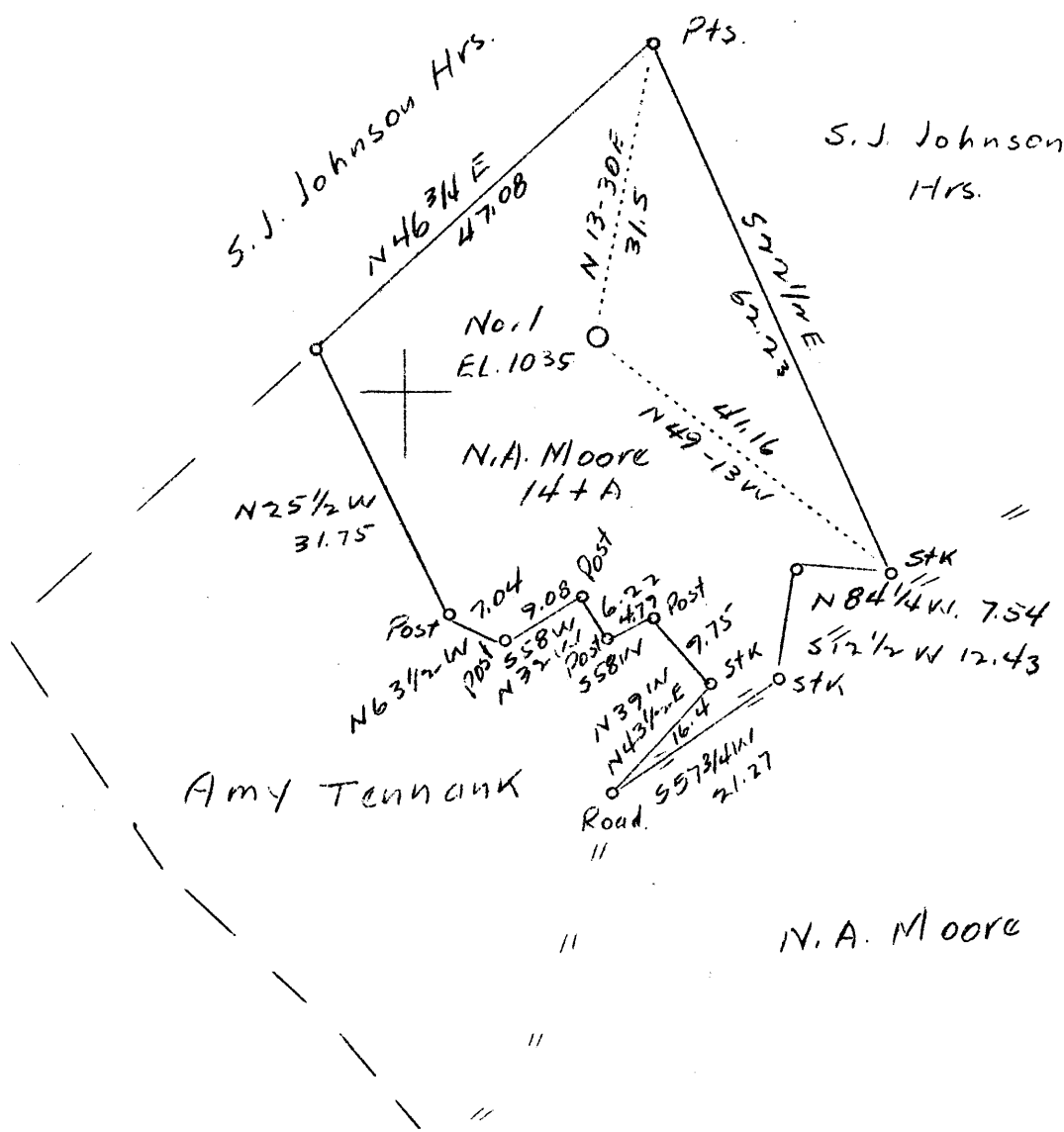
LATITUDE 39° 45'

LONGITUDE 80° 05'

1 2 3

1  
2  
3

S. 97° W  
4.345



W - 4.02  
S - 4.4

Abd.

Company	Consolidation Oil & Gas Co.
Address	B-229, Morgantown, W. Va.
Farm	N. A. Moore, part of Daniel Moore farm
Tract	1
Acres	14 plus
Well (Farm) No.	1
Serial No.	5156
Elevation (SL)	1035
Quadrangle	Blacksville <i>N</i>
County	Monongalia
District	Clay
Engineer	A. L. Headley
Eng. Reg. No.	-
Date	June 8, 1939
Scale	1" - 20 poles

STATE OF WEST VIRGINIA  
Department of Mines  
OIL & GAS DIVISION  
Charleston

WELL LOCATION MAP  
File No. MON-210A

x Denotes location of well on U. S. Topographic Maps, scale 1 to 62,500, latitude and longitude lines being represented by border lines as shown.

- Denotes one inch spaces on border line of original tracing.



STATE OF WEST VIRGINIA  
DEPARTMENT OF MINES  
OIL AND GAS DIVISION

615

571A

WELL RECORD

Oil or Gas Well \_\_\_\_\_ (KIND)

Permit No. \_\_\_\_\_

Company Dunn-Mar Oil & Gas Co. Waynesburg, Pa.  
 Address Mail to H.E. Walker 433, Bridge St. Waynesburg, Pa.  
 Farm Nimrod A. Moore Acres 14  
 Location (waters) \_\_\_\_\_  
 Well No. One Elev. 1034  
 District Clay County Monongalia  
 The surface of tract is owned in fee by \_\_\_\_\_  
 Address \_\_\_\_\_  
 Mineral rights are owned by \_\_\_\_\_  
 Address \_\_\_\_\_  
 Drilling commenced \_\_\_\_\_  
 Drilling completed 11-1915  
 Date Shot \_\_\_\_\_ From \_\_\_\_\_ To \_\_\_\_\_  
 With \_\_\_\_\_

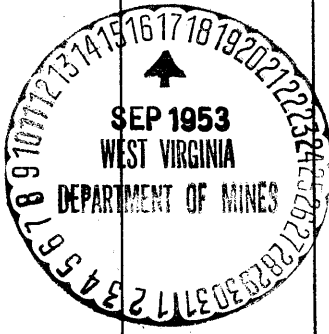
Casing and Tubing	Used in Drilling	Left in Well	Packers
Size			
16			Kind of Packer
13			
10			Size of
8 1/4		658	
6 1/2		1638	Depth set
5 3/16		1830	
3			Perf. top
2		1955	Perf. bottom
Liners Used			Perf. top
			Perf. bottom

Open Flow \_\_\_\_\_ /10ths Water in \_\_\_\_\_ Inch  
 \_\_\_\_\_ /10ths Merc. in \_\_\_\_\_ Inch  
 Volume \_\_\_\_\_ Cu. Ft.  
 Rock Pressure \_\_\_\_\_ lbs. \_\_\_\_\_ hrs.  
 Oil \_\_\_\_\_ bbls., 1st 24 hrs.  
 Fresh water \_\_\_\_\_ feet \_\_\_\_\_ feet  
 Salt water \_\_\_\_\_ feet \_\_\_\_\_ feet

CASING CEMENTED \_\_\_\_\_ SIZE \_\_\_\_\_ No. Ft. \_\_\_\_\_ Date \_\_\_\_\_

COAL WAS ENCOUNTERED AT 105 FEET 24 INCHES  
190 FEET 36 INCHES 450 FEET 60 INCHES  
546 FEET 72 INCHES FEET INCHES

Formation	Color	Hard or Soft	Top	Bottom	Oil, Gas or Water	Depth Found	Remarks
Native Coal			105	107			
Waynesburg Coal			190	193			
Mapletown Coal			450	455			
Pgh. Coal			540	546			
Lime			1745	1765			
Pencil Cave			1765	1768			
Big Lime			1768	1833			
Big Injun			1835				
TOTAL DEPTH				1955			



JAN 2 1954