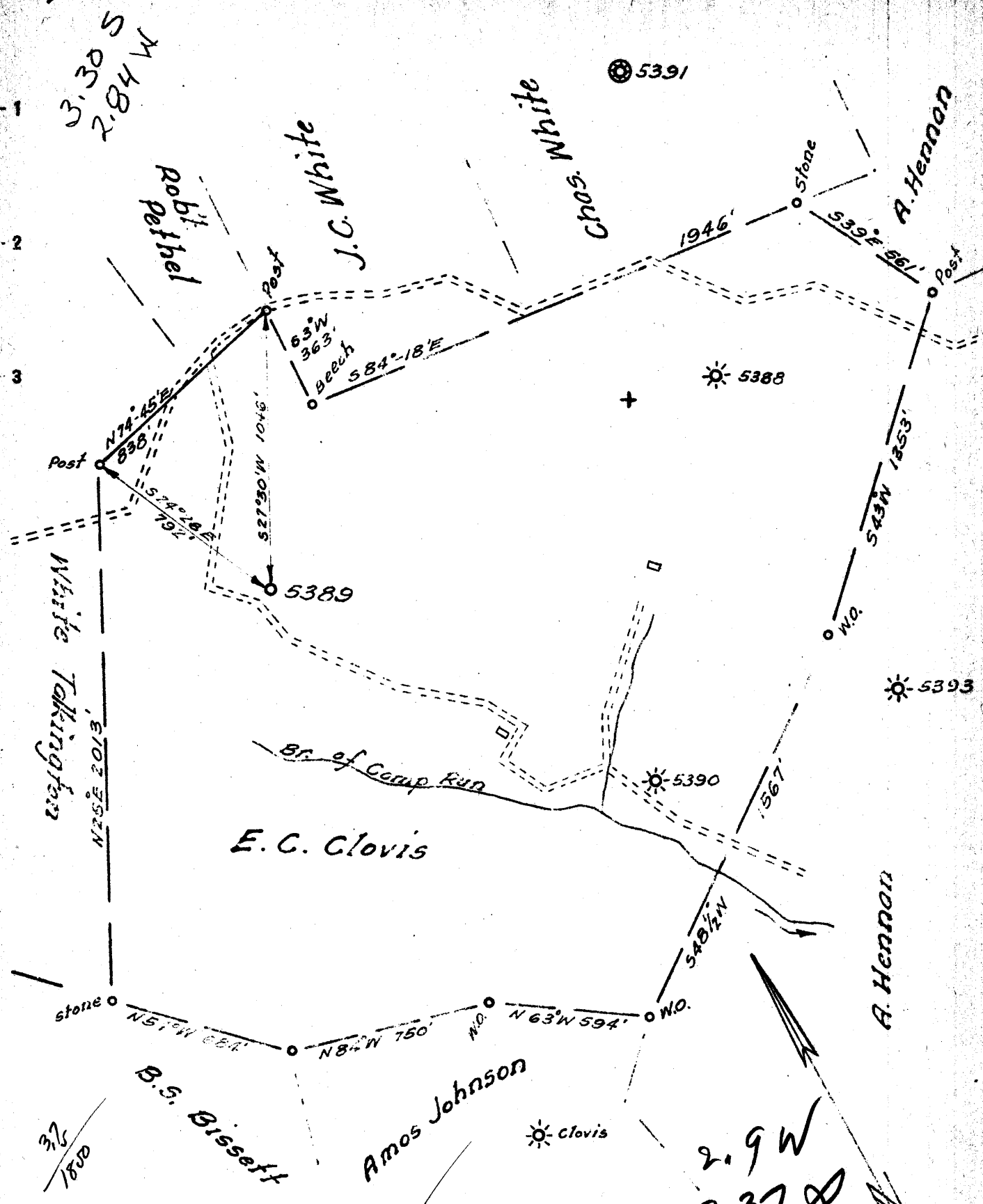




Latitude 39 20  
Longitude 80 20



New Location   
 Drill Deeper   
 Abandonment

APR - 7 1940

2.9 W  
3.37

Company Pittsburgh & W. Va. Gas Co  
 Address Clarksburg, W. Va.  
 Farm E. C. Clovis  
 Tract \_\_\_\_\_ Acres 155 Lease No. 21202  
 Well (Farm) No. Two Serial No. 5389  
 Elevation (Spirit Level) 1331'  
 Quadrangle Mannington, N/W, 2-4  
 County Monongalia District Battelle  
 Engineer James H. Jeffries  
 Engineer's Registration No. \_\_\_\_\_  
 File No. 33/69 Drawing No. \_\_\_\_\_  
 Date 3/30/40 Scale 1" = 500'

STATE OF WEST VIRGINIA  
 DEPARTMENT OF MINES  
 OIL AND GAS DIVISION  
 CHARLESTON

WELL LOCATION MAP  
 FILE NO. MON-222A

+ Denotes location of well on United States Topographic Maps, scale 1 to 62,500, latitude and longitude lines being represented by border lines as shown.

- Denotes one inch spaces on border line of original tracing.

STATE OF WEST VIRGINIA  
DEPARTMENT OF MINES  
OIL AND GAS DIVISION

291

WELL RECORD

Permit No. AB 222A

Oil or Gas Well Gas  
(Kind)

Company Pittsburgh & West Va Gas Company.

Address Clarksburg, West Va.

Farm E. C. Clovis Acres 155

Location (waters) Magn. N/W. 2-4

Well No. 5389 Elev. 1331

District Battelle County Monongalia

The surface of tract is owned in fee by E.C. Clovis Hrs.

% Clark L. Clovis Address Hundred, W.Va.

Mineral rights are owned by Clark L. Clovis

H.F.D. Address Hundred, W.Va.

Drilling commenced October 29th, 1927

Drilling completed

Date shot Depth of shot

Open Flow /10ths Water in Inch

/10ths Merc. in Inch

Volume Ck Ft

Rock Pressure lbs

Oil bbls, 1st 24 hrs.

Fresh water feet

Salt water feet

Casing and Tubing	Used in Drilling	Left in Well	Packers
Size			
16			Kind of Packer
13			<u>2-6-5/8" X 2"</u>
10	<u>1090</u>	<u>Out</u>	Size of
8 1/4	<u>1492</u>	<u>Out</u>	<u>Packer at 3029</u>
6 5/8	<u>2302</u>	<u>2302'</u>	" <u>2932</u>
5 3/16	<u>3052</u>	<u>Out</u>	Depth set
3			Perf. top
2	<u>3060</u>	<u>3060'</u>	Perf. bottom
Liners Used			Perf. top
			Perf. bottom

CASING CEMENTED SIZE No. Ft. Date

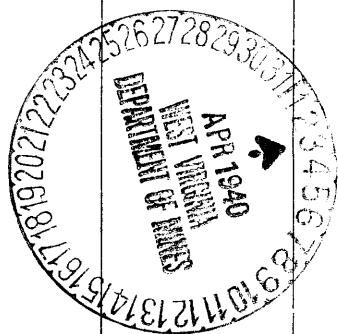
COAL WAS ENCOUNTERED AT 705 FEET 72 INCHES

970 FEET 72 INCHES

1035 FEET 60 INCHES 1065 FEET 120 INCHES

FEET INCHES FEET INCHES

Formation	Color	Hard or Soft	Top	Bottom	Oil, Gas or Water	Depth Found	Remarks
DIFT	Yellow		0	11			
Line	White		11	15			
Slate	"		15	25			
Line	"		25	40			
Slate-Line	"		40	100			
"	"		100	200			
Slate	Red		200	225			
Slate-Line	White		225	300			
"	"		300	325			
Line-Grity	"		325	360			
Slate&Line	"		360	400			
Slate	Dark		400	430			
" & Line	White		430	500			
"	"		500	550			
Line-Grity	"		550	600			
Slate	Dark		600	633			
" & Line	"		633	700			
Slate	Dark		700	705			
Waynesburg Coal			705	711			
Slate&Line	White		711	800			
Line	"		800	850			
"	"		850	970			
M.T. Coal			970	976			
Slate			976	985			
Line	White		985	1005			
Slate	"		1005	1015			
Line	"		1015	1035			
Graham Coal			1035	1040			
Line	White		1040	1065			
Fgh. Coal			1065	1075			
Slate	Dark		1075	1090			
Line	White		1090	1094			
Slate&Line	Red		1095	1100			
Line	White		1100	1125			
Slate&Line	"		1125	1150			
"	Red		1150	1175			
"	White		1175	1205			
"	"		1205	1275			
"	Red		1275	1300			
"	"		1300	1400			
"	White		1400	1450			
"	Pink		1450	1470			



Formation	Color	Hard or Soft	Top	Bottom	Oil, Gas or Water	Depth Found	Remarks
Slate & Lime	White		1470	1575			
Big Dunkard			1575	1675			
Slate&Lime			1675	1760			
Gas Sand			1760	1835			
Slate & Lime shells			1835	1900			
1st.Salt Sand			1900	1940			
Slate& Lime			1940	1950			
2nd.Salt Sand			1950	2000	Water	1995'	2 Bailers
Slate			2000	2010			
3rd.Salt Sand			2010	2028			
Slate&Lime shells			2028	2095			
Maxon Sand			2095	2115			
Slate			2115	2149			
Red Rock			2149	2159			
Lime			2159	2175			
Slate			2175	2200			
Grity Lime			2200	2226			
Slate			2226	2240			
Lime			2240	2245			
Slate			2245	2253			
Little Lime			2253	2260			
Pencil Cave			2260	2286			
Lime			2286	2290			
2nd.Pencil Cave			2290	2293			
Big Lime			2293	2370			
Big Injun			2370	2557			
Slate			2557	2568			
Grity Lime			2568	2600			
Slate&Lime			2600	2650			
Lime			2650	2710			
Slate & Lime			2710	2910			
Berea Grit(Sand)			2910	2965			
Slate&Lime			2965	3030			
Sand-shells			3030	3033			
Slate			3033	3040			
Fifty Foot Sand			3040	3079	Gas	3041-45'	
Slate			3079	3085			
Sand			3085	3090			
Slate			3090	3092			
Sand			3092	3105			
Slate			3105	3107			
Sand			3107	3121			
Slate			3121	3125			
Thirty Foot Sand			3125	3167			
Slate			3167	3180			
Red Rock			3180	3183			
Slate&Shell			3183	3188			
Gordon Stray			3188	3211			
Slate&Shell			3211	3236			
Gordon Sand			3236	3295			
Slate&Shell			3295	3318			
4th.Sand			3318	3342			
Slate&Shells			3342	3368			
5th.Sand			3368	3392			
Slate&Shells			3392	3490			
Byard Sand			3490	3494			
Slate&Shells			3494	3543			
Total Depth.....				3543'			

Date **January 18th,** 19**40**

**PITTSBURGH & WEST V. GAS CO.**

APPROVED.....  
 By *[Signature]* (Title) *[Initials]*