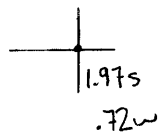


Latitude

Longitude



Topo Location

7.5' Loc. \_\_\_\_\_ 15' Loc. \_\_\_\_\_  
 \_\_\_\_\_ (calc.) \_\_\_\_\_

Company Duncan-Mann O&G

Farm DJ Eddy #1

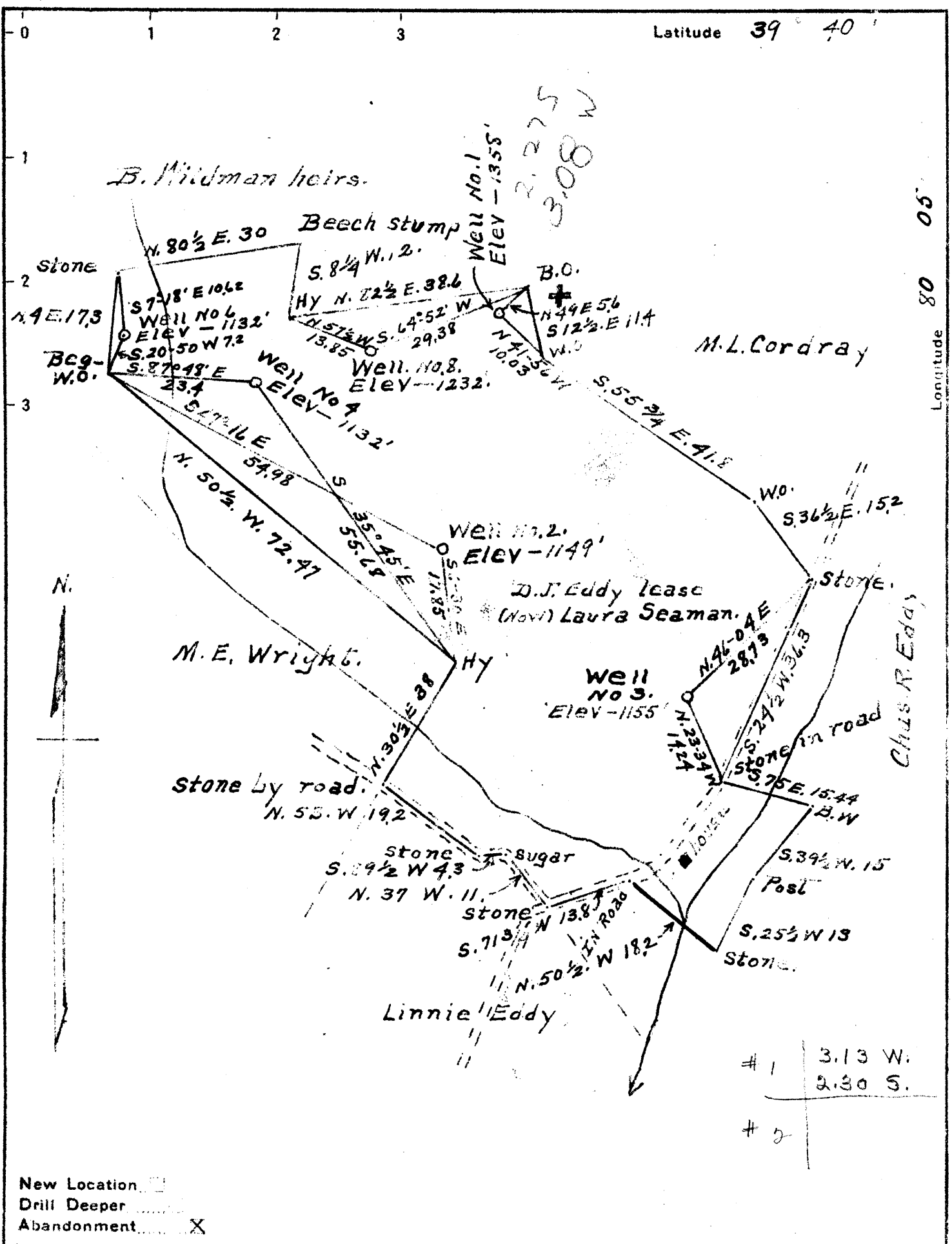
15' Quad \_\_\_\_\_  
(sec.)

7.5' Quad Blacksville

District Clay

WELL LOCATION PLAT

County 061 Permit 30224



Company DUNN-MAR OIL & GAS Co.  
 Address Waynesburg Pa.  
 Farm Part of D.J. Eddy farm  
 Tract one Acres 39+ Lease No. \_\_\_\_\_  
 Well (Farm) No.'s 1-2-3-4-6 Serial No. \_\_\_\_\_  
 Elevation (Spirit Level) As shown Above  
 Quadrangle Blacksville  
 County Monongalia District Clay  
 Engineer A.L. Headley  
 Engineer's Registration No. \_\_\_\_\_  
 File No. \_\_\_\_\_ Drawing No. \_\_\_\_\_  
 Date May 29, 1946 Scale 1 inch = 20 poles

STATE OF WEST VIRGINIA  
 DEPARTMENT OF MINES  
 OIL AND GAS DIVISION  
 CHARLESTON

**WELL LOCATION MAP**  
 FILE NO. MON-224A-225A  
WELL 1 & 2

+ Denotes location of well on United States Topographic Maps, scale 1 to 62,500. latitude and longitude lines being represented by border lines as shown.

- Denotes one inch spaces on border line of original tracing.