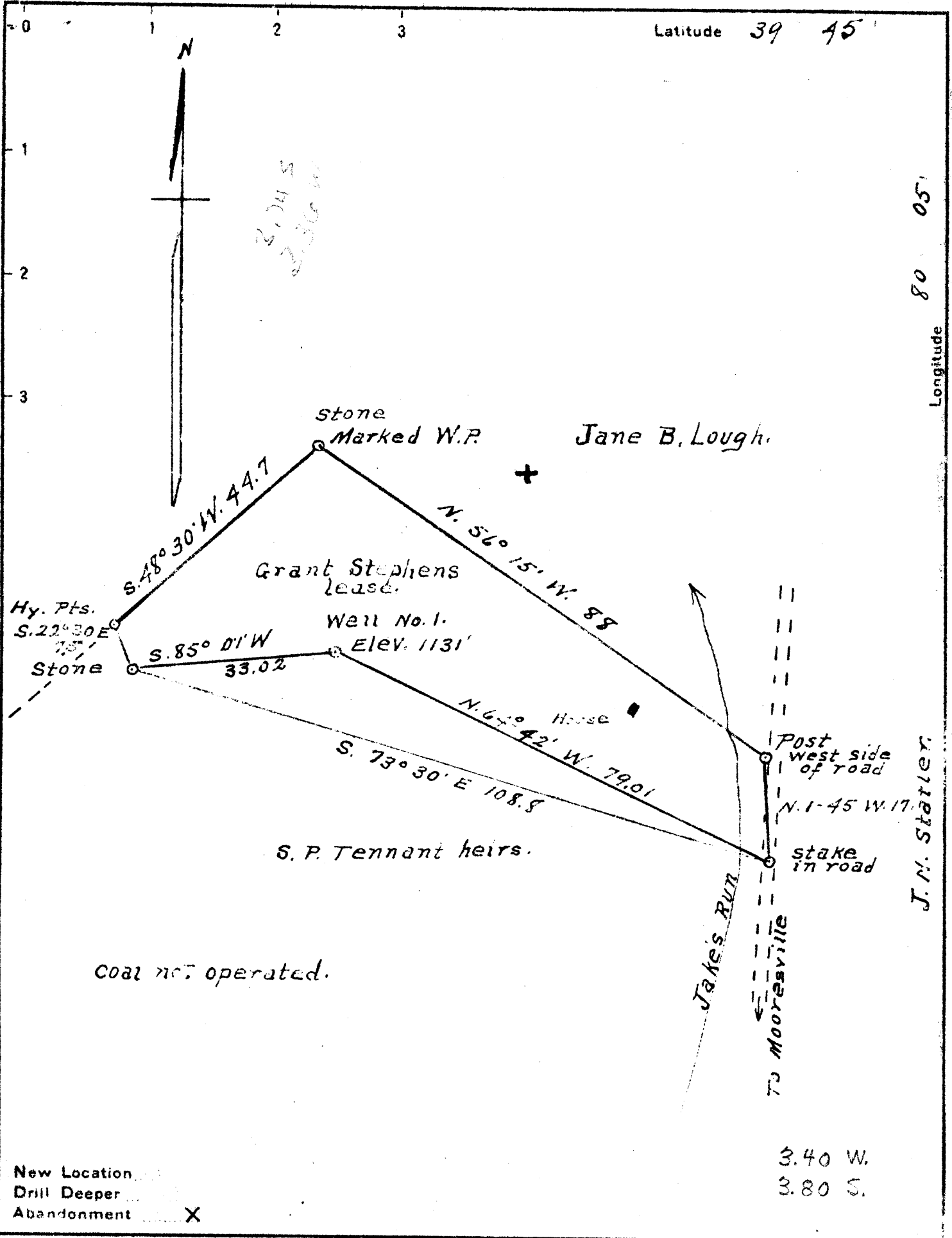




Latitude 39 45'

Longitude 80 05'



Company James Knight  
 Address Garrison, Pa.  
 Farm Theodore & J.E. Eddy  
 Tract ONE Acres 19+ Lease No. \_\_\_\_\_  
 Well (Farm) No. ONE Serial No. \_\_\_\_\_  
 Elevation (Spirit Level) 1131  
 Quadrangle Blacksville  
 County Monongalia District Clay  
 Engineer A.L. Headley  
 Engineer's Registration No. \_\_\_\_\_  
 File No. \_\_\_\_\_ Drawing No. \_\_\_\_\_  
 Date 6-26-1940 Scale 20 poles = 1 inch.

STATE OF WEST VIRGINIA  
 DEPARTMENT OF MINES  
 OIL AND GAS DIVISION  
 CHARLESTON

**WELL LOCATION MAP**  
 FILE NO. MON-233A

+ Denotes location of well on United States Topographic Maps, scale 1 to 62,500, latitude and longitude lines being represented by border lines as shown.

- Denotes one inch spaces on border line of original tracing.

Clay District, Monongalia County, W. Va.  
By Carnegie Natural Gas Co.  
Near Mooresville.  
New drilling.  
Memo. received Dec. 16, 1914.

7  
Pittsburgh Coal

Murphy Sand (gas at 666')

(2 1/10 water in 2" opening; test  
taken after well had been blowing  
12 hours)

Top.	Bottom.
545	- 550
662	